

Blink

THE GHOST

ANIMAT3D

IMPORTANT: BLINK MAKES SILENT FACES, WHEN THERE IS NO AUDIO PLEASE NOTE THAT THE UNIT IS NOT BROKEN.

1. Power adapter not included, all USB power adapters are compatible (ie: mobile phone charger).
2. Please do not open Blink in order to avoid damaging the unit.
3. Maintain adequate ventilation, do not cover the Blink with objects such as cloth or other materials.
4. Please keep Blink away from direct rain, water or snow, indoor / covered porch setting is OK.
5. Please disconnect/remove power source (USB cable) when not using for extended periods of time.
6. Please do not disconnect the USB cable when Blink is ON. Switch OFF and then disconnect the USB cable.
7. Do NOT drop or shake the unit.
8. Please ensure that Blink is placed in temperatures within 20°F - 100°F

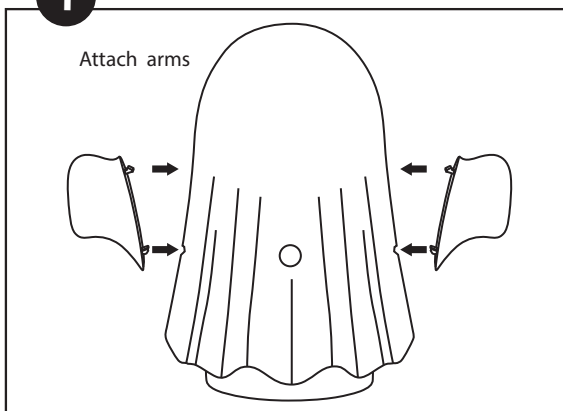


READ BEFORE USE:

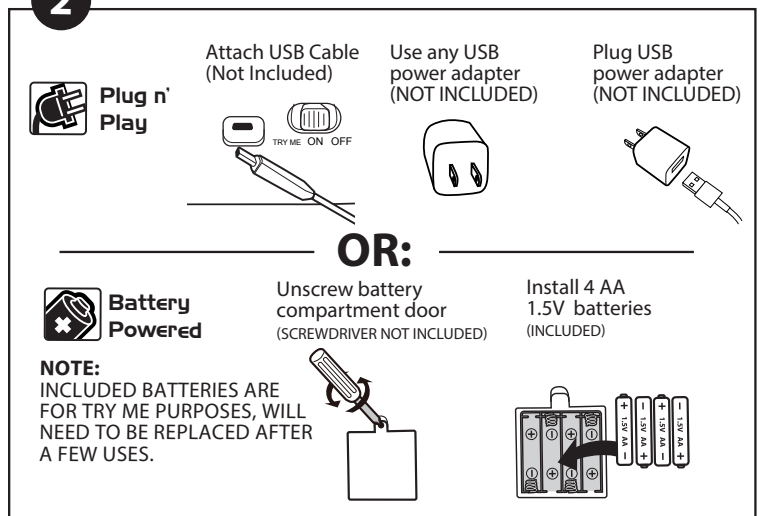
SWITCH UNIT TO ON. NOTE THAT BLINK WILL START SPEAKING AFTER 5 SECONDS AFTER BEING SWITCHED TO ON POSITION.

SETUP:

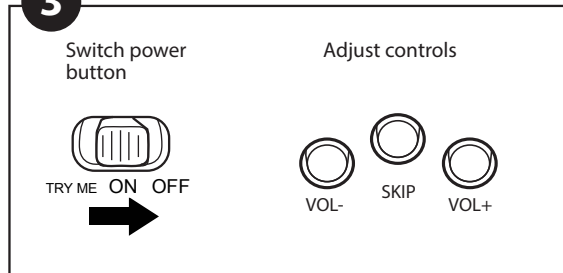
1



2



3



STILL MODE:

Give Blink a decorative look by entering into still mode. Blink will not run any animation but instead will maintain a still face. Press and hold the + & - buttons simultaneously for 3 seconds to enter into still mode. To exit press any button to resume animations.

TRY ME MODE:

Move the main switch to "TRY ME", 8 sec of random animation is played when any of the button is pressed (Vol -/ Skip / Vol+)

PLAY MODE:

Move the main switch to "ON", video is played in loop. Skip to play next track. Vol-/ Vol + to adjust sound level.

*Note: 40 minutes of video will continue on a loop until turned off manually, there is no timer on Blink The Snowman.

MINDSCOPE
PRODUCTS

PO BOX 9525
GLENDALE, CA 91226

Connect with us:



[pinterest.com/mindscope](https://www.pinterest.com/mindscope)



[youtube.com/mindscope](https://www.youtube.com/mindscope)



[facebook.com/mindscopeproducts](https://www.facebook.com/mindscopeproducts)



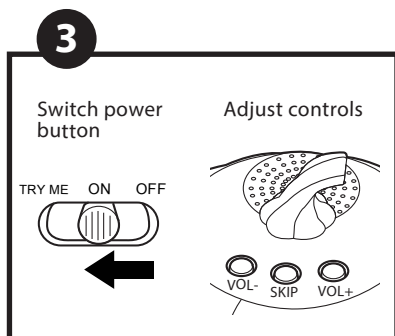
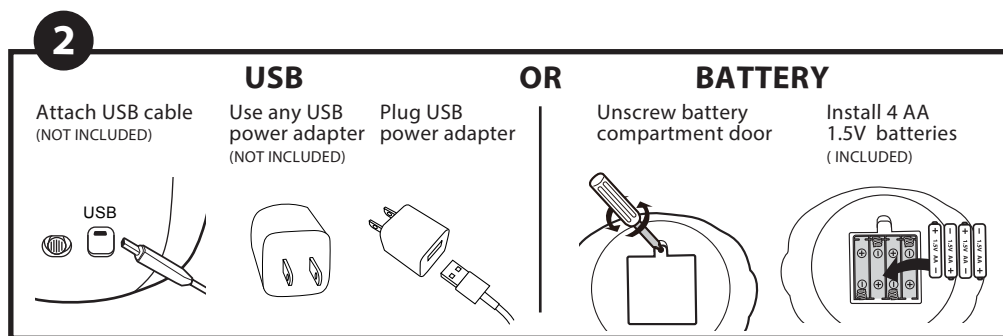
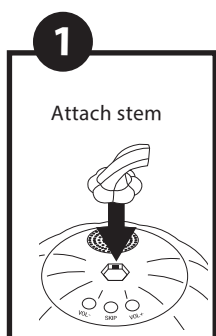
[Instagram.com/mindscopeproducts](https://www.instagram.com/mindscopeproducts)

Jabberin' JACK

ANIMAT3D

IMPORTANT: JABBERIN' JACK MAKES SILENT FACES, WHEN THERE IS NO AUDIO PLEASE NOTE THAT THE UNIT IS NOT BROKEN.

1. Power adapter NOT INCLUDED, all USB power adapters are compatible (ie: mobile phone charger).
2. Please do not open Jabberin' Jack in order to avoid damaging the unit.
3. Maintain adequate ventilation, do not cover the Jabberin' Jack with objects such as cloth or other materials.
4. Please keep Jabberin' Jack away from direct rain, water or snow, covered porch outdoor setting is OK.
5. Please disconnect/remove power source (USB cable) (NOT INCLUDED) when not using for extended periods of time.
6. Please do not disconnect the USB cable (NOT INCLUDED) when Jabberin' Jack is ON. Switch OFF and then disconnect the USB cable.
7. Do NOT drop or shake the unit.
8. Please ensure that Jabberin' Jack is placed in temperatures within 20°F - 100°F



STILL MODE:

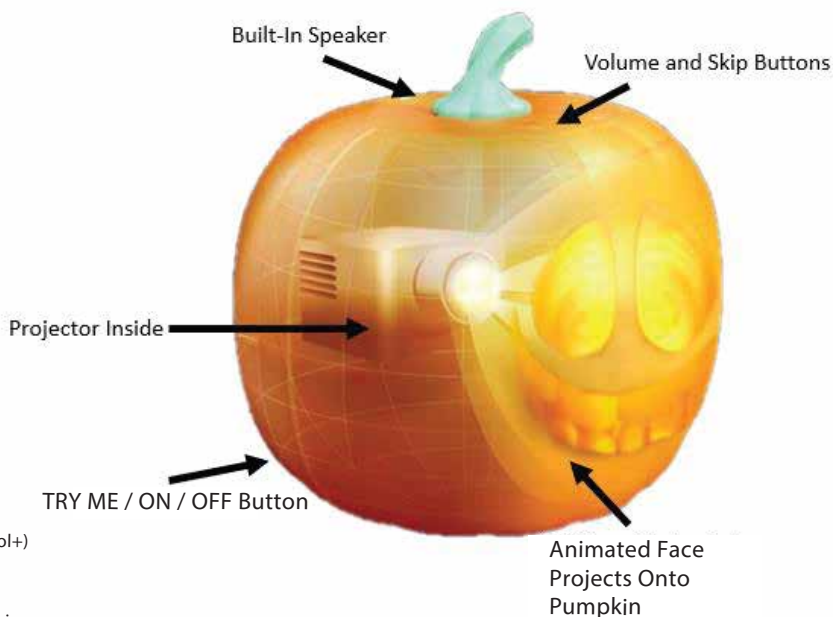
Give Jabberin' Jack a decorative look by entering into still mode. Jabberin' Jack will not run any animation but instead will maintain a still face. Press and hold the + & - buttons simultaneously for 3 seconds to enter into still mode. To exit press any button to resume animations.

TRY ME MODE:

Move the main switch to "TRY ME", random animation is played when any of the button is pressed (Vol -/ Skip / Vol+)

PLAY MODE:

Move the main switch to "ON", video is played in loop. Skip to play next track. Vol-/ Vol + to adjust sound level.



*Note: Video will continue on a loop until turned off manually, there is no timer on Jabberin' Jack.

MINDSCOPE
PRODUCTS

PO BOX 9525
GLENDALE, CA 91226

Connect with us:

- pinterest.com/mindscope
- youtube.com/mindscope
- facebook.com/mindscopeproducts
- [Instagram.com/mindscopeproducts](https://instagram.com/mindscopeproducts)