



ד"ס"ד

7-in-1
LED LIGHT THERAPY
 - NECKPLATE -
 Advanced Skin Renewal
 LLTN21



INSTRUCTION MANUAL

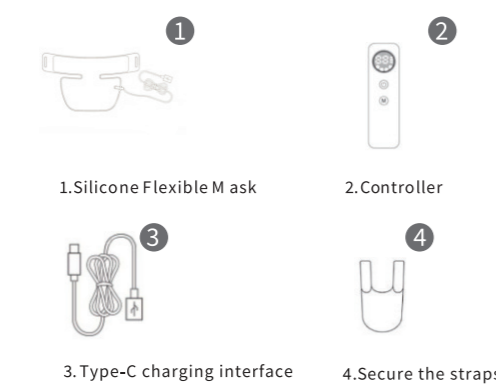
In order to bring you a better experience and effect, please be sure to read this manual carefully before using item.

1. Product description

1. Improve skin care: This LED neck beauty device functions as a collagen neck mask, helping skin absorb nutrients from skincare products more efficiently and effectively. It refines skin texture, brightens complexion, and restores plumpness and elasticity for smoother, firmer, and more youthful-looking skin.

2. For Oily Skin: Great for oily skin and skin, improves oil balance. It reduces acne. Reduce oil secretion, make neck skin more balanced, help maintain skin health, and regulate oily skin.

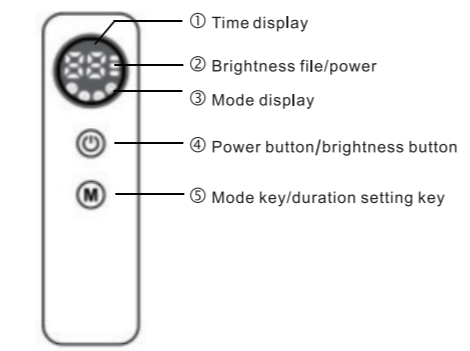
2. Product specification



3. Product parameters

Charging voltage: 5V
 Rated voltage: 3.7V
 Power: 3.2W
 Charging current: 560MA

4. Controller operating instructions



① Time display: The time is displayed in a countdown manner from the set duration, when the time display is 0, the mask will automatically shut down.

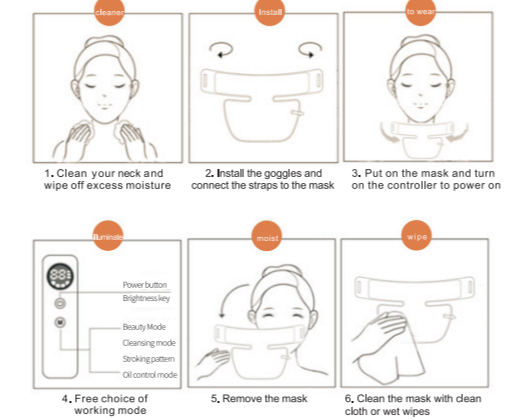
② Brightness level/battery power: Display the battery power 3 seconds before starting up (one light on means the battery power is 30%, two lights on indicates that the battery power is 60%, three lights on indicate that the battery power is 100%), and the brightness level is displayed for 3 seconds after power on. When the light flashes, it means that the battery is low and needs to be charged.

③ Mode display: There are 4 modes, skin beautification, cleansing, wrinkle smoothing and oil control.

④ Power key/brightness key: Long press the power key to switch on and off, short press to adjust the brightness after booting, and the brightness can be adjusted in three levels.

⑤ Mode key/time setting key: Short press the mode key to switch modes, long press to set the working time, there are 5 minutes, 10 minutes, 15 minutes, 20 minutes are optional, and the default is 10 minutes after power on.

5. Instructions for use



Notice:

1. After using the care, use a soft towel or wet towel to wipe the silicone part, please dry it in ventilation and store it in a dust bag
 2. Do not directly contact the water source.
 3. Recommended 3-5 times a week, 4 consecutive weeks as a cycle.
 4. For the first use, please fully charge the device, and do not use it while charging.

The following people should not use this product	1. People who are pregnant and breastfeeding. 2. People who are photosensitive or who are taking any drugs that may cause photosensitivity. 3. People with eye genetic diseases or skin diseases (such as lupus erythematosus, photosensitive eczema or albinism, etc.)
Charging instruction	1. This product contains a lithium-ion battery, and the charging of this product does not support power-on work 2. When the control brightness indicator flashes, the device is in the charging state. When the three control brightness indicators are all on and stop flashing, the charging is completed.

6. Light sensitivity test

Before using this product at the first time, please conduct a light sensitivity test:

First step	Put the device on your arm and turn on the switch to irradiate for 10 minutes. If the skin becomes red or itchy symptoms, indicating that you may have light-sensitive skin. It is recommended that you stop using it, or before using it again, consult a dermatologist
Second step	Before use, please clean your neck and keep it dry (without makeup) to prevent cosmetics that may contain some light-sensitive ingredients affect skin care efficacy
Third step	After use, the skin may appear reddened, which is a normal reaction of the skin, and will occur within 1-2 days. It will return to normal within hours, if you feel burning or other discomfort during the process, please stop using it immediately

7. How to use and steps

First step	Clean neck thoroughly
Second step	Connect the straps to the mask, place the mask on the neck, adjust and fasten the straps to secure the mask. Long press the controller button to turn on the device
Third step	According to the different light energy, this device sets four working modes respectively, which can be adjusted according to the needs. Adjust the brightness level of each mode. After starting up, the device defaults to low gear, and the gear can be adjusted by pressing the button. When the brightness gear light is flashing, the device is in a low battery state and needs to be charged
Fourth step	The device will automatically turn off within the set time after it is turned on. After the device is turned off, take off the mask and end the irradiation, follow your daily skin care regimen.
Fifth step	Recommended 3-5 times a week, 4 consecutive weeks as a cycle

8. Light Functions, Wavelength & Recommended Duration

① Red Light
 Wavelength: 630-660 nm
 Function: Anti-aging, reduce neck lines, firm skin, promote collagen production, repair skin barrier
 Recommended duration: 10-15 minutes per session
 Frequency: 3-4 times per week

② Green Light
 Wavelength: 520-560 nm
 Function: Even skin tone, reduce dullness and discoloration, soothe skin
 Recommended duration: 8-10 minutes per session
 Frequency: 2-3 times per week

③ Blue Light
 Wavelength: 415-460 nm
 Function: Calm breakouts, control oil, improve pores and small pimples on the neck
 Recommended duration: 5-8 minutes per session
 Frequency: 2 times per week

④ Yellow Light
 Wavelength: 590-605 nm
 Function: Brighten skin, reduce yellowish tone, soothe sensitive skin
 Recommended duration: 8-10 minutes per session
 Frequency: 3 times per week

General Guidelines
 Total time per session: do NOT exceed 15 minutes
 Use 1-2 light modes each time
 For sensitive skin: start with 5 minutes per light, gradually increase time
 Avoid direct eye exposure
 Moisturize after use and apply sun protection during daytime

1 Year limited Warranty Parts and Labor
PLEASE READ BEFORE USING DEVICE
 PURSONIC warrants this product to be free of defects in material and workmanship for a period of one year covering parts and labor from the date of original purchase. To obtain repair or replacement within the terms of this warranty, please return the product with proof of warranty coverage (copy of receipt), description of defect, transportation prepaid to:

PURSONIC
 160 West 28th St
 NEW YORK, NY 10001

This warranty does not apply to any products that has been damaged through alteration, mishandling, misuse or negligence. The extent of PURSONIC's liability under this warranty is limited to the repair or replacement provided above and in no event shall the company's liability exceed the purchase price paid by the purchaser for the product. This warranty gives you specific legal rights and you may also have other rights which vary from state to state. A minimum of \$10 will be charged for any repair service beyond 1 year from the date of original purchase. Also a \$10 money order made payable to PURSONIC must be included to cover return shipping and handling charges.

For customer service in the USA please call 212-414-7198 info@pursonicusa.com www.pursonicusa.com
 Distributed by SAMSONIC, New York, NY 10001 USA