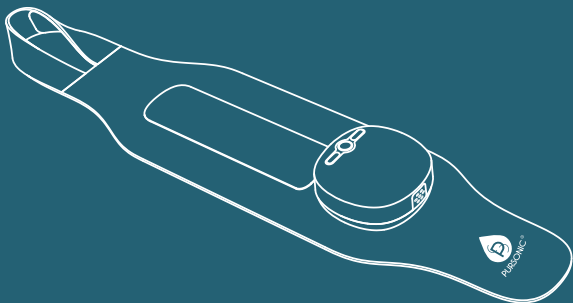




WIRELESS ELECTRIC WRIST MASSAGER

Designed to address everyday wrist discomfort
with rhythmic EMS massage.



Instruction Manual
KTRW7

ICON DESCRIPTION

ICON DESCRIPTION

	Pay attention to! Consult the accompanying documents
	Do not insert the pins
	Do not bleach
	Do not turn it over to dry
	Do not dry clean
	Pregnant women are strictly prohibited to use it
	Environmental protection period of electronic information products
	Please read the instructions carefully
	Can't wash
	Hang in the shade to air dry
	Do not iron
	Direct current
	Do not use when sleeping

■ READ BEFORE USE

[PRECAUTIONS]

1. Before using the product, please refer to the operating instructions for details.
2. This product is not a medical device and is not recommended for medical use and is not intended for medical use in hospitals.
3. The product has a heating surface, and shall not be allowed to use people who are insensitive to heat, infants or people who cannot take care of themselves.
4. This product should not be used by children, unless the parent or guardian has set it up in advance, or has given sufficient guidance to the children on how to use it.
5. If you stop using it, please turn off the power supply.
6. In the pulse massage mode, do not quickly improve the massage intensity, there will be a strong sense of stimulation leading to human discomfort.
7. If there are oil agents or flammable substances on the product, please use a soft and slightly wet sponge or soft cloth to clean it. It is forbidden to clean the product with water.
8. When using, do not rub any other plaster with fever in the heated part, such as safflower oil, tiger bone ointment, etc.
9. In case of any accident or damage (smoke, fire, abnormal noise, odor, etc.), be sure to cut off the product power supply first (unplug the power plug), and then do other disposal.
10. Do not let pets (such as cats, dogs or other pets) close to this product, because the pet may destroy the product and lead to accidents.
11. Do not power on when folded covers or other items are placed on the product to avoid damage to the product.
12. Do not use it in high temperature and humid places. Do not use when the product is wet. Do not use this product on unhealed wounds.
13. Do not use in the oxygen inhalation chamber or when using oxygen inhalation equipment, do not use in a mixture of combustible anesthetic with air, oxygen and nitrogen oxides.

READ BEFORE USE

[PRECAUTIONS]

14. The product must follow the indicated parameters (5V $\overline{\text{---}}$ 1A) Supply power (charge) .
15. If the product may be used for a duration, the product shall be adjusted to the low (temperature) level recommended for continuous use.

[FORBIDDEN]

Not parts except the wrist.

[USE RECOMMENDATIONS]

1. If the temperature is too high / the hot compress area is red, it is recommended to adjust the lower gear.
2. Please do not make continuous use. It is recommended that the use frequency is not more than 3 times per day, and the interval between each time is more than 2 hours, to avoid burns beyond the bearing range of the body.
3. Do not use it during bedtime, which may cause burns due to the decreased adjustment ability of the body.

[FORBIDDEN]

1. Not allowed for pregnant women.
2. Because children's skin is delicate, it should be used accompanied by family members. Pay attention to lowering the temperature and shorten the use time.
3. Diabetic patients, elderly patients and other skin perception system is not sensitive, it should be used accompanied by family members. Pay attention to the use time should not be too long, and the use temperature should not be too high to avoid scalding.
4. Patients with severe heart disease, patients who have undergone implant surgery, patients who have had internal bleeding, patients with cardiac pacemakers and other seriously ill patients should be used under the guidance of doctors.

■ READ BEFORE USE

[FORBIDDEN]

5. People with abnormal skin and wound ulceration should avoid using it in abnormal places and wound places.
6. Patients with tumor diseases should pay attention to avoid the lesions, and use them under the guidance of doctors.
7. Use with caution in people with allergies, high fever, fever and poisoning.
8. For special conditions, please use them under the guidance of a doctor.
9. Patients with symptoms such as dizziness, nausea and elevated blood pressure should be suspended and should be used under the guidance of a doctor.

[FORBIDDEN]

- **Please never not use with the following medical electronic devices:**
 - 1) Implanted medical electronic devices such as cardiac pacemakers;
 - 2) Life-sustaining medical electronic devices such as artificial heart and lung;
 - 3) Medical electronic equipment such as electrocardiograph;
 - 4) If the patient uses high-frequency surgical equipment on the body at the same time, the electrode may cause burns and damage the product; If the product is used near shortwave or microwave treatment equipment (1M), its output may be unstable. —may cause these medical electronic devices to malfunction.
- **For the following circumstances, please consult the doctor for use.**
 - (1) Patients with acute diseases;
 - (2) Patients with malignant tumors;
 - (3) Patients with infectious diseases;
 - (4) pregnant women;
 - (5) patients with heart disease;
 - (6) Patients with high fever;
 - (7) Patients with abnormal blood pressure;
 - (8) Other patients who are being treated by doctors and feel abnormal in their bodies. —Accidents can occur that cause physical discomfort.

■ READ BEFORE USE

[FORBIDDEN]

- The conductive leather must be in full and uniform contact with the skin, otherwise there is a risk of burning.
- Do not use on the throat, head, mouth or pubic area, skin diseases, etc. —Accidents can occur that cause physical discomfort.
- Do not use with other products, and with outer coatings (including spray outer coatings). —can cause nausea or discomfort.
- Do not use for purposes other than massage.
- Do not use for analgesia during childbirth. —can be dangerous to pregnant women and their babies.
- Do not place the conductive leather in front of the cardiac projection area, left and right at the same time (any conductive placement method should not allow current to flow through the heart). —Accidents can occur that cause physical discomfort. Use close to the chest increases the risk of heart fibrillation.babies.
- Do not disassemble, repair or transform the product without authorization. — may cause failure or electric shock.
- Both sides of the conductive leather must be attached to the skin each time you use it. —otherwise the output will not be felt.
- Avoid touching the left and right sides during use. — otherwise, short circuit may occur and the product may be damaged
- After each use, the electrode in contact with people should be cleaned and disinfected. —otherwise there is a risk of infection
- If you feel unwell due to an abnormal body, stop using it immediately.—If you have any abnormal body or skin feelings, please consult your doctor and follow your doctor's advice.
- In use, if you want to move the conductive leather to other parts, be sure to cut off the power before moving. —or you risk a strong electric shock.

■ READ BEFORE USE

[FORBIDDEN]

- During the massage process, if you want to use the product for others, be sure to turn off the power before moving. —or you risk a strong electric shock.
- Do not use the product with electronic devices. — may cause electronic devices to misoperate (such as: electronic watch time disorder).
- Do not use for children or persons without the ability to express consciousness. —can cause an accident or physical discomfort.
- Do not use it in places with high humidity such as bathrooms, or massage while taking a bath.
—will receive a strong electric shock.
- Do not spill liquid on the electrode. —The device may fail.
- Do not use at bedtime. — may cause equipment failure, and the electrodes may be moved to other parts of the body and cause discomfort.
- Do not use while driving a car. — There is a possibility of strong irritation causing accidents or trouble.
- Do not use in the same area for a long time (more than 30 minutes). — may cause discomfort.
- Do not share with others. — may cause skin infections.
- Do not use this product near short wave or microwave treatment equipment (e.g. 1m).
— may cause unstable output of the product.

PRODUCT INTRODUCTION

[PRODUCT PRESENTATION]

Thumb straps

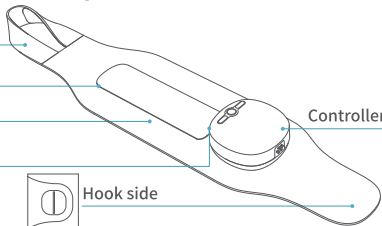
Fuzzy side

Wrist Brace

Charging port

Controller

Hook side



STEPS DESCRIPTION

[CONTROL PANEL OPERATION]

● Turn on and off

1. Power on: Press and hold the [Function key] to power on, the default is low temperature level 1 and pulse level 0.
2. Shut down: long press [Function key] to shut down, all functions and corresponding indicator lights will turn off.

● Heating function

1. In the power-on state, short press the [heating button], and the three gears of low temperature - medium temperature - high temperature are adjustable.
2. The temperature gear displays the corresponding gear number.

● Pulse function

1. In the power-on state, short press the [Function Key], 5 pulse modes are adjustable, the pulse mode displays the corresponding number.
2. Short press the [Pulse Button], the pulse intensity can be adjusted from 0 to 9, the pulse intensity displays the corresponding number.



- ① pulse key
- ② function key
- ③ heating key

STEPS DESCRIPTION

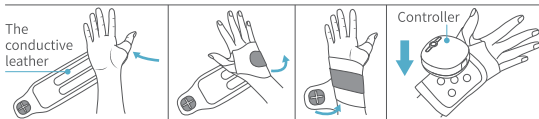
1. The product is set to automatically shut down for 20 minutes. After shutdown, long press 2s [function key] to power on.
2. Warning: The appliance has a hot surface, and people who are not sensitive to heat must pay attention when using it.
3. If you feel that the pulse is weak or no pulse, you can wipe the conductive leather with a slightly wet cloth to enhance the conductive performance. It is recommended to start debugging from a low position.
4. If you feel the pulse is too strong or uncomfortable during use, you can press the "function key" to switch mode, and the pulse intensity will automatically return to 0.

[BATTERY LEVEL DISPLAY]

Power	Reminder
Low power	The battery icon flashes
In charging	The battery icon flashes
Full charge	The battery icon is always on

Note: 1. This model is a charging model, which cannot be used when charging. Please unplug the charging cable after full charge. 2. In the use state, plug in the charging cable, and the main opportunity will automatically shut down and enter the charging state.

[USAGE METHOD]



1. Pass the strap end through your thumb, with the conductive leather facing inward and close to the skin;
2. The main body of the product starts from the back of the hand and goes around the wrist;
3. Velcro to adjust the elasticity and fixation;
4. Attach the controller to the main body, press and hold the function key for 2 seconds to turn it on.

■ MAINTENANCE

[MAINTENANCE]

1. Take measures to prevent moisture, rats and pollution.
2. After use, please place the product in a safe place. Do not hold heavy objects on the product to prevent damage and deformation.
3. When there is a fault, please contact the technicians for maintenance. Do not disassemble the products at will.
4. Please store it in a dry and well-ventilated place to avoid strong sunlight exposure and corrosive gas and liquid erosion.
5. Please place this product out of children's reach.
6. When not in use, please press the following methods: after the product is cooled, store the charging cable separately from the product body.
7. If it is not used for a long time, please put this product and accessories in the package and store them in a dry and ventilated place, or cover them with dust cover (bring your own) to avoid dust. Do not expose the product to the sun to avoid fading or cracking.
8. Do not use this product for other purposes.
9. Always check the appliance for signs of wear or damage, if so, or if the appliance has been misused, the appliance should be returned to the supplier before reuse.
10. It is recommended to charge it every other month when it is not in use for a long time.

■ MAINTENANCE

[PRODUCT CLEANING]

1. Pay attention to the cleaning and protection of products to avoid damage and poll
2. Before cleaning, be sure to cut ution. off the power supply and wait for cooling before starting cleaning.
3. Can only use a soft and slightly wet sponge or soft cloth to clean, do not make this product wet.
4. During the cleaning process, water or other liquids should be prevented from entering the body, and it should not be immersed in any liquid, so as to avoid short circuit and electric shock risk during use.
5. Do not use grinder, brushes, gasoline, kerosene, glass / furniture polish, or paint thinner to clean up products with corrosive chemicals that may cause product damage.

[Transport and Storage]

Ambient temperature: -20°C ~ + 55°C

Relative humidity: 90%

Transportation: products with simple earthquake facilities, suitable for air, railway, road and ship transportation. Rain, inversions and collision should be avoided during transportation.

Health and environmental protection description:

When the product and packaging materials are discarded, they shall not be disassembled, discarded or burned at will, and shall be sent to the garbage recycling station in accordance with the corresponding national laws and regulations.

■ TROUBLESHOOTING

[CORRECTIVE MAINTENANCE]

If any fault during use, please perform the following checks:

Common faults	Possible causes	Solutions
It can not be powered on.	Low battery	Charge it.
	The product is being charged.	Charge it before use.
It can not be charged or there is no charging display.	The USB cable is not connected.	Check if the plugs at both ends of the USB cable are properly inserted.
	Product malfunction	Send it back to the service center for repair.
It does not generate heat.	Low battery	Charge it.
	Product malfunction	Send it back to the service center for repair.
There is no pulse.	Low battery	Charge it.
	It is too dry, so the conductivity is weak.	Wipe the conductive leather with a slightly damp cloth.
	Product malfunction	Send it back to the service center for repair.

Note: If you can not troubleshoot or this product still can not be operated properly, please cut off the power supply and directly contact the after-sales service center or contact the online after-sales customer service to request repair service. Do not disassemble or attempt repair by yourself

PRODUCT PARAMETER

[PRODUCT PARAMETER]

Product Name	Tech Love Wrist Massager
Product Model	DH047A
Specifications	free size
Main Material	Yoga cloth, leka, conductive leather, ABS
Net Weight Of Products	About 92g
Product Size	Wrist brace: about 360x87x5mm; Controller: about 56x56x26mm
Charging Parameters	5V=== 1A
Rated Voltage	3.7V===
Power Rating	3.2W
Battery Capacity	800mAh
Timing	20 Minutes
Charging Time	About 2 hours
Security Type	Class III
Lot Number	See nameplate
Version	E-01
Manufacturer	Guangzhou New design Biotechnology Co., Ltd
Address	Room 101 building 6 No.265 Chigang west road, Haizhu District, Guangzhou, Guangdong

Note: Product size, net weight / gross weight are approximate. Please refer to the physical object for the specific size and weight.

1 Year limited Warranty Parts and Labor
PLEASE READ BEFORE USING DEVICE

PURSONIC warrants this product to be free of defects in material and workmanship for a period of one year covering parts and labor from the date of original purchase. To obtain repair or replacement within the terms of this warranty, please return the product with proof of warranty coverage (copy of receipt), description of defect, transportation prepaid to:



PURSONIC®

160 West 28th St
NEW YORK, NY 10001

This warranty does not apply to any products that has been damaged through alteration, mishandling, misuse or negligence. The extent of PURSONIC's liability under this warranty is limited to the repair or replacement provided above and in no event shall the company's liability exceed the purchase price paid by the purchaser for the product. This warranty gives you specific legal rights and you may also have other rights which vary from state to state. A minimum of \$10 will be charged for any repair service beyond 1 year from the date of original purchase. Also a \$10 money order made payable to PURSONIC must be included to cover return shipping and handling charges.

For customer service in the USA please call 212-414-1798 info@pursonicusa.com www.pursonicusa.com
Distributed by SAMSONIC, New York, NY 10001 USA