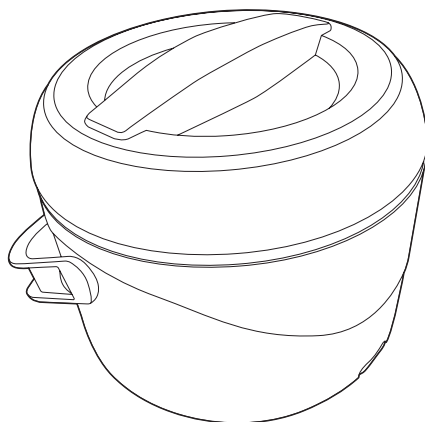


CHEFSPOT

Electric Lunch Box

MODEL:

CHSPFWBLK, CHSPFWWHT



Thank you for choosing CHEFSPOT!

PLEASE READ BEFORE RETURNING THIS PRODUCT FOR ANY REASON.

If you have a question or experience a problem with your CHEFSPOT purchase, call 908-349-1116 from 10:00 a.m. to 6:00 p.m. EST Mon. - Fri. to speak with an agent or email us at support@primobrandsgroup.com. Please have the model number available when you contact us.

SAVE THIS MANUAL FOR FUTURE REFERENCE.

SAFETY INFORMATION



DANGER

DANGER - Immediate hazards which **WILL** result in severe personal injury or death



WARNING

WARNING - Hazards or unsafe practices which **COULD** result in severe personal injury or death



CAUTION

CAUTION - Hazards or unsafe practices which **COULD** result in minor personal injury

IMPORTANT SAFETY INSTRUCTIONS



WARNING

When using electrical appliances, basic safety precautions should be followed, including the following

1. READ ALL INSTRUCTIONS BEFORE USE
2. Do not touch hot surfaces. Use handles or knobs.
3. To protect against electrical shock, do not immerse cord, plug, or heating base in water or other liquid.
4. Close supervision is necessary when any appliance is used by or near children.
5. Unplug from outlet when not in use and before cleaning. Allow to cool before putting away, or taking off parts.
6. Do not operate any appliance with a damaged cord or plug or after the appliance malfunctions or has been damaged in any manner. Return appliance to the nearest authorized service facility for examination, repair, or adjustment.
7. The use of accessory attachments not recommended by the appliance manufacturer may cause injuries.
8. Do not use outdoors.
9. Do not let cord hang over edge of table or counter, or touch hot surfaces.
10. Do not place on or near a hot gas or electric burner, or in a heated oven.
11. Extreme caution must be used when moving an appliance containing hot oil or other hot liquids. Always allow to cool before moving your heated food warmer.
12. Always attach plug to appliance first, then plug cord into wall outlet.
13. Do not use appliance for other than intended use.
14. This appliance has a polarized plug (one blade is wider than the other). To reduce the risk of electric shock, this plug is intended to fit into a polarized outlet only one way. If the plug does not fit fully into the outlet, reverse the plug. If it still does not fit, contact a qualified electrician. Do not attempt to modify the plug in any way.
15. Avoid sudden temperature changes, such as adding refrigerated foods or cold liquids into a heated pot.
16. Keep 6 inches clear from the wall and 6 inches clear on all sides.
17. CAUTION: To prevent damage or shock hazard, do not heat directly in the heating base. Heat only in the removable inner vessel provided.
18. Save these instructions.

SAFETY INFORMATION

To ensure safe use and avoid harm and property damage to users and others, be sure to strictly observe the following safety precautions:

1. If the power cord is damaged, replace it with a new one or purchase a replacement from our repair department.
2. Do not place the lunch box near flammable materials.
3. Do not plug in or unplug the power cord with wet hands.
4. Do not submerge the product in water for cleaning, as it may damage the appliance.
5. Do not modify, disassemble, or attempt to repair the product yourself.
6. Do not use the lunch box on uneven or wet surfaces.
7. Do not disinfect the lunch box in a high-temperature sterilizing cabinet.
8. Do not heat the lunch box in a microwave oven.
9. Do not freeze the lunch box in a refrigerator.
10. Do not turn on the lunch box when it is empty.

SAVE THESE INSTRUCTIONS HOUSEHOLD USE ONLY

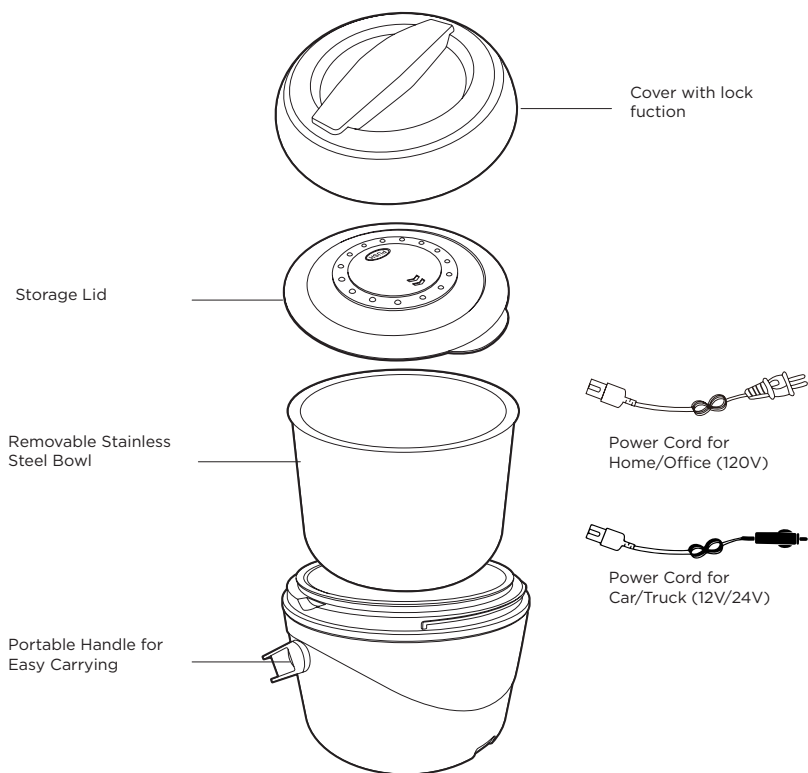
NOTE: Neither CHEFSPOT nor the dealer can accept any liability for damage to the product or personal injury resulting from failure to observe the electrical connection procedures.

IMPORTANT NOTE: Some countertop and table surfaces are not designed to withstand the prolonged heat generated by certain appliances. Do not set the heated unit on a finished wood table. We recommend placing a hot pad or trivet under your food warmer to prevent possible damage to the surface.

NOTE: During initial use of this appliance, some slight smoke and/or odor may be detected. This is normal with many heating appliances and will not recur after a few uses.

SET UP & USE

PARTS & FEATURES



Before you use your CHEFSPOT Food Warmer, remove all packaging components and wash the lids and removable food container with warm soapy water and dry thoroughly. Never submerge the warming base in water and always unplug before cleaning.

NOTE: The unit is not designed for use with uncooked food. If a recipe calls for uncooked meats, it should be fully cooked before combining with other ingredients and heating it in the unit.

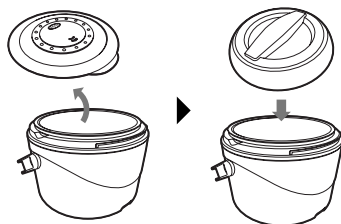
SET UP & USE

OPERATION INSTRUCTIONS

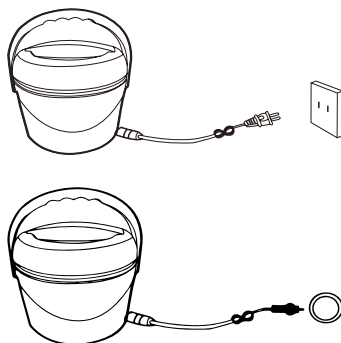
1. Fill the removable food container with desired food and place the food container lid on. The capacity of the inner vessel is 37oz. Do not overfill.



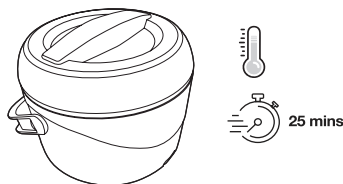
2. Before heating, remove the lid from the inner container and securely close the lunch box lid.



3. Plug in your Food Warmer ahead of time to ensure your meal is ready when you are. The power indicator light will illuminate, and the unit will start heating your food automatically.



4. Unplug the cord after the food is heated. Enjoy!



ADDITIONAL NOTES:

Heating time varies based on the amount of soup, vegetables, and room temperature.

1. At an indoor temperature of 75°F, heating soup takes approximately 25 minutes.
2. If the soup is refrigerated, allow additional heating time.
3. Always unplug the power cord before eating or when not in use.

SET UP & USE

CARE AND MAINTENANCE

1. Always unplug your Food Warmer and let it cool completely before cleaning.
CAUTION: Do not submerge the unit in water or any other liquid.
2. Remove the food container, discard any remaining food, and fill it with warm, soapy water to loosen residue. Use a cloth, sponge, or rubber spatula to clean—avoid abrasive cleaners. For water spots or stains, a non-abrasive cleaner or vinegar works well.
3. The removable food container, its lid, and the outer lid are dishwasher safe.
4. Wipe the exterior of the unit with a soft cloth and warm, soapy water, then dry thoroughly. Avoid abrasive cleaners.
5. If there are any issues with the lunch box, please send it to our designated maintenance service department for repair. Do not attempt to repair it yourself.

TROUBLESHOOTING & WARRANTY

CUSTOMER SERVICE

IMPORTANT

DO NOT RETURN THIS APPLIANCE TO THE STORE

If you have a problem with this appliance, please contact the BH HOME GOODS LLC Customer Satisfaction Center at 908-349-1116. You can also email us at support@primobrandsgroup.com

**DATED PROOF OF PURCHASE, MODEL # AND DATE CODE
REQUIRED FOR WARRANTY SERVICE**

SPECIFICATIONS

- Unit Dimensions (WxDxH): 7.87" x 7.87" x 6.29"
- Capacity: 37oz (1.1L)
- Net Weight: 2.42 lbs.
- Rated Power: 80W
- Rated Volt/Frequency: AC120V, 60Hz, 80W or 12/24VDC

Troubleshoot your problem by using the chart below. If the appliance still does not work properly, contact BH HOME GOODS LLC customer service center or the nearest authorized service center. Customers must never troubleshoot internal components.

TROUBLE	POSSIBLE CAUSE	POSSIBLE REMEDY
Device does not power on	Loose power connection	Ensure the plug is fully inserted.
	Damaged Power Cable	Contact customer service.
	Internal electronics issue	Contact customer service.
Device powers on but does not heat	Heating element malfunction	Contact customer service.
Food is not hot enough	Heating time is too short	Increase heating time.
	Outside temperature or food is too cold	Increase heating time.
Initial odor during use	Normal for new devices	Use the device several times to eliminate the smell.

TROUBLESHOOTING & WARRANTY

LIMITED WARRANTY

Any repair, replacement, or warranty service, and all questions about this appliance should be directed to BH HOME GOODS LLC at **908-349-1116** from the USA or Puerto Rico.

BH HOME GOODS LLC Co. warrants to the original purchaser that the appliance will be free from defects in material, parts and workmanship for the period designated for this appliance. The warranty commences the day the appliance is purchased and covers up to a period of **1 year (12 months) for labor/1 year (12 months) for parts (manufacturing defects only)**.

BH HOME GOODS LLC Co. agrees that it will, at its option, replace the defective appliance with either a new or remanufactured appliance equivalent to your original purchase during the warranty period.

Exclusions: This warranty does not apply to the below:

1. If the appearance or exterior of the appliance has been damaged or defaced, altered or modified in design or construction.
2. If the appliance original serial number has been altered or removed or cannot be readily determined.
3. If there is damage due to power line surge, user damage to the AC power cord or connection to improper voltage source.
4. If damage is due to general misuse, accidents or acts of God.
5. If repair attempts are done by unauthorized service agents, use of parts other than genuine parts or parts obtained from persons other than authorized service companies.
6. On units that have been transferred from the original owner.
7. On appliances that have been purchased as refurbished, like new, second-hand, in a "As-Is" or "Final Sale" terms.
8. To appliances used in a commercial or rental setting.
9. To appliances used in settings other than ordinary household use or used other than in accordance with the provided instructions.
10. To damages for service calls for improper installations.
11. To glass parts and other accessory items that are included with the unit.
12. Transportation and shipping costs associated with the replacement of the unit.
13. Food loss for loss due to appliance failure or delay in service, repair or replacement.
14. Service calls to instruct you how to use your appliance.
15. Service calls to repair or replace the house fuse, reset the circuit breaker or correct the wiring in the house.

REPAIR OR REPLACEMENT AS PROVIDED UNDER THIS WARRANTY IS THE EXCLUSIVE REMEDY OF THE CUSTOMER; BH HOME GOODS LLC SHALL NOT BE LIABLE FOR ANY INCIDENTAL OR CONSEQUENTIAL DAMAGES FOR BREACH OF ANY EXPRESS OR IMPLIED WARRANTY ON THIS Appliance, EXCEPT TO THE EXTENT PROHIBITED BY APPLICABLE LAW. ANY IMPLIED WARRANTY OF MERCHANTABILITY OF FITNESS FOR A PARTICULAR PURPOSE ON THIS Appliance IS LIMITED TO THE DURATION OF THE WARRANTY.

Some states do not allow the exclusion or limitations of incidental or consequential damages, or limitations on how long the warranty lasts. In these cases the above exclusions or limitations may not apply to you. This warranty gives you specific legal rights and you may also have other rights which vary from state to state.

Obtaining Service: To obtain service, appliance literature, supplies or accessories please call **1 (908) 349-1116** to create a ticket for exchange/repair. Please make sure to provide the date of purchase, model number and a brief description of the problem. Our customer service representative will contact you or send detailed return instructions.

BH HOME GOODS LLC does not warrant that the appliance will work properly in all environmental conditions, and makes no warranty and representation, either implied or expressed, with respect to the quality, performance, merchantability, or fitness for a particular purpose other than the purpose identified within this user's manual. BH HOME GOODS LLC has made every effort to ensure that this user's manual is accurate and disclaims liability for any inaccuracies or omissions that may have occurred. Information in this user's manual is subject to change without notice and does not represent a commitment on the part of BH HOME GOODS LLC. BH HOME GOODS LLC reserves the right to make improvements to this user's manual and/or to the appliances described in this user's manual at any time without notice. If you find information in this manual that is incorrect, misleading, or incomplete, please contact us at 1- **908-349-1116**.

BH HOME GOODS LLC
908-349-1116



© 2025 CHEFSPOT is a BH HOME GOODS Company.
All Rights Reserved.

MODEL: CHSPFWBLK, CHSPFWWHT

MODEL: DFH-C30-1