

SHARPER IMAGE®

NUGGET ICE MAKER

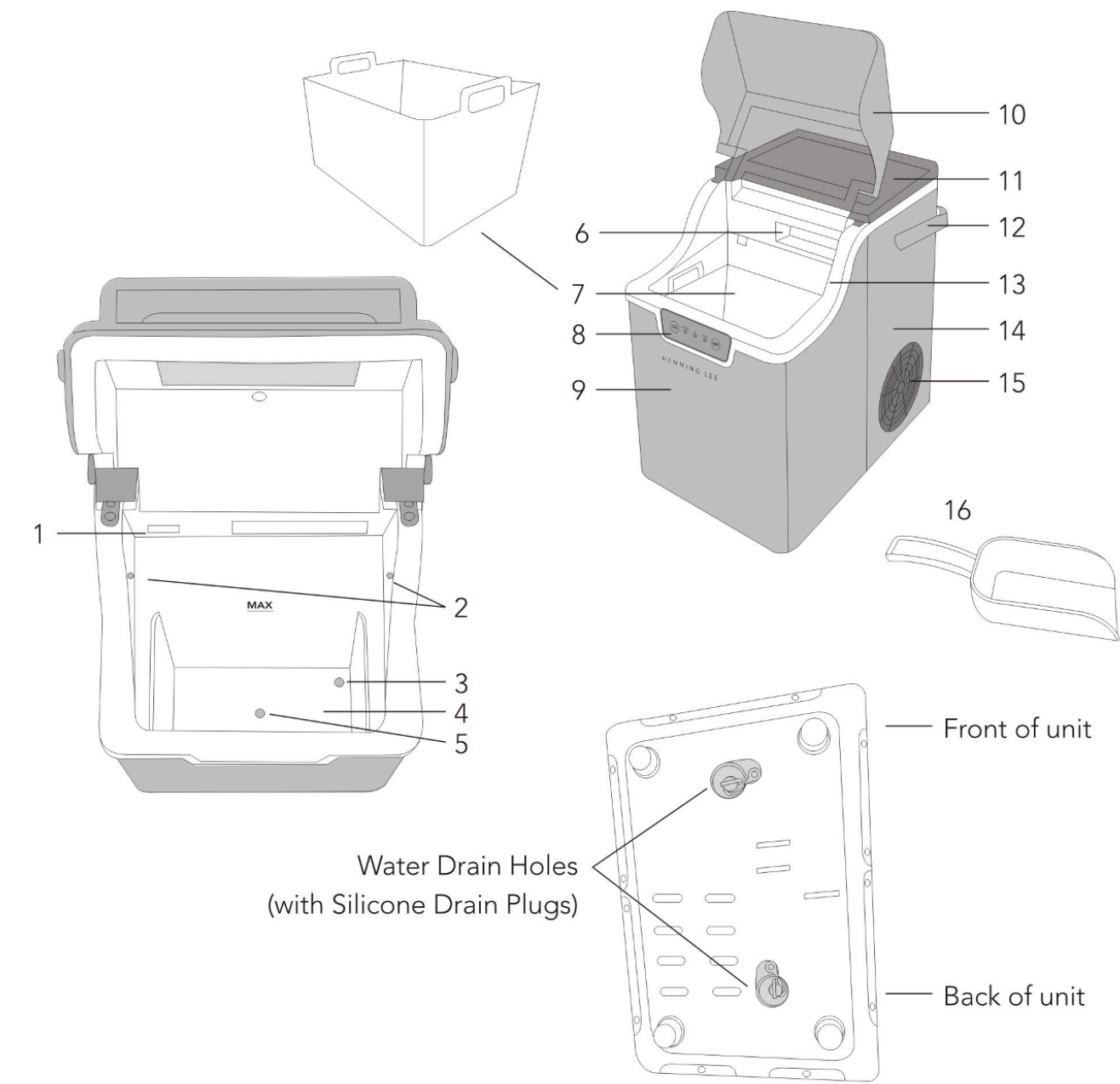
Item No. 212187

User Guide



Thank you for purchasing the Nugget Ice Maker. Please take a moment to read this guide and store it for future reference.

PARTS DIAGRAM



1	Overfill Prevention outlet	6	Ice outlet	11	Back top lid
2	Ice full sensor	7	Ice basket	12	Handle
3	Water intake manifold	8	Control panel	13	Frame
4	Water tank	9	Front shell	14	Rear shell
5	Drain hole	10	Front lid	15	Ventilation cover
				16	Ice Scoop

SPECIFICATIONS

Daily Ice Output:	26lbs [12kg] / 24 hours
Ice Shape:	Nugget
Ice Storage Capacity:	1.75lbs [800g]
Compressor High efficiency CFC free	R600a
Water Reservoir Capacity:	7.5 cups [1.8Liters]
Dimensions(W*D*H):	13.4 x 9.45 x 14.6 inches [340*240*370mm]
Power cord:	74" length with 3-prong grounded plug

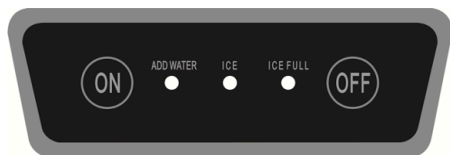
FEATURES

5 minutes for ice to start forming
Large viewing window
Ice full alert
Add water alert
Nugget shaped ice
Handle for easy carrying
Auto clean

Important: Before Using Your Nugget Ice Maker for the First Time

1. Do not turn the ice maker upside down as this may damage the compressor and sealed system.
2. Place the ice maker on a flat level surface. Allow 6" of space on the top, back, and sides for proper ventilation.
3. Do not use the ice maker near an oven, radiator, or other heat source.
4. Let the device sit for at least 2 hours, with the front lid open.

CONTROL PANEL OPERATION



	Press On to start making ice. To start the AUTO CLEAN function, press and hold the ON button for 5 seconds.
	The light will illuminate, and a long beep will sound. Refill the water tank with water and restart appliance.
	Illuminated while the appliance is making ice.
	Illuminated when the ice basket is full.
	Press to stop making ice and enter Standby Mode.

OPERATING INSTRUCTIONS


Step 1. Open the Front lid, remove the Ice Basket, and fill the water tank with water up to the Max line.

Note: *The water level in the water tank should never rise above the bottom of the Ice Basket.*

Step 2. Plug in the appliance. Appliance will enter Standby Mode and Ice light on Control Panel will flash.

Step 3. Press  button.

Note: *Water will be drawn into the unit and the appliance will begin working. The first ice nuggets coming out will be soft and wet. This is normal and will change during operation.*

Step 4. Press  button to stop making ice. Appliance will enter Standby Mode.

CARE AND MAINTENANCE

1. Clean the inner liner, ice collecting tray, water box, ice shovel, and evaporator frequently. When cleaning, unplug the unit and remove the ice cubes. Use a diluted solution of water and vinegar to clean the inside and the outside surface of the ice maker. Do not spray ice maker with chemicals.

2. Rinse thoroughly before starting. Wipe the inside and allow to dry thoroughly.

3. Keep ventilation openings clear of obstruction. Do not use mechanical devices or other means to accelerate the defrosting process.

4. Always use fresh water before starting ice production. Do not allow water to stagnate inside the device.

TROUBLESHOOTING

Problem	Possible Reasons	Suggested Solutions
The compressor works abnormally with a buzzing noise.	The voltage is lower than recommended.	Stop the ice maker and do not restart until the voltage is normal.
	The compressor was damaged during transportation	Stop unit and keep on a flat surface for 24h, then restart.
ADD WATER indicator light is on	The water level is too low	Fill water
Indicator lights on display are not on.	Blown fuse / No power.	Replace fuse / Turn power on
Unit is working but no ice comes out	Leakage of gas	Call for service

WARRANTY AND CUSTOMER SERVICE

This item from SharperImage.com includes a 1-year limited replacement warranty. If you have any questions not covered in this guide, please call our Customer Service department at 1 (877) 210-3449. Customer Service agents are available Monday through Friday, 9:00 a.m. to 6:00 p.m. ET.

SHARPER IMAGE®

The SHARPER IMAGE® name and logo are registered trademarks.

©Sharper Image. All Rights Reserved.