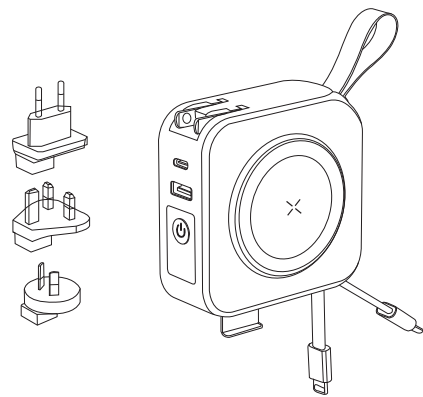


# Voyager Universal 5-In-1 Charger & Adapters

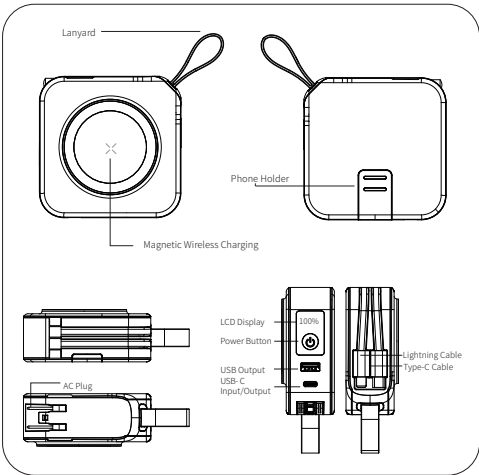
## User Manual



FCC ID : 2AP6DPS-B003W

Made in China

### Product Diagram



### Product Parameter

Model No.: PS-B003W	Item No.: 3774, 3775, 3776, 3777
Battery Capacity: 3.7V/10000mAh, 37Wh	Material: Fireproof ABS+PC
Type-C Input: DC5V/3A, 9V/2A, 12V/1.5 PD18W Max	AC Input: 100-240V AC 50Hz/60Hz 0.3A(Max)
Type-C Output: DC5V/3A, 9V/2.22A, 12V/1.67A PD20W Max	Type-C Cable Output: DC 5V/3A Max
USB Output: DC 5V/4A, 9V/2A, 12V/1.5A 22.5W Max	Lightning Cable Output: DC 5/2.4A Max
Adaptor Mode Output: 5V-2A 10W Max	Wireless Output: 15W Max
N.W.: 270g	Size: 86mm X 86mm X 35.5mm

### Includes:

- 1x User Manual
- 1x Multi-Function Power Bank 10,000mAh with US Adapter Plug
- 1x Travel Pouch
- Interchangeable Worldwide Adapters:
- 1x AU Adapter Plug
- 1x EU Adapter Plug
- 1x UK Adapter Plug



### User Guide



Wall Charger



Phone Holder



Power Bank



Adapter Plug



Wireless Charger

You can charge up to five devices at once: two via the additional ports, one wirelessly with MagSafe, and two more using the built-in cables.

#### Device Compatibility:

The Voyager Universal 5-In-1 Charger & Adapter can charge nearly any mobile device that uses USB-C or lightning connectors, as well as any Qi wireless-enabled device. Please note, with a maximum output of 22.5W, it is not sufficient to power laptops.

#### Device Charging Speed

The charging speed varies depending on the port you use. Wireless charging can take your device from 0% to 50% in 30 minutes. The built-in charger will operate at regular speed, while PD (Power Delivery) can be up to three times faster than standard chargers.

#### Using the Power Bank

Please select your charging method from below and connect to a device.

1. Built-in Cables
2. USB-A Port
3. Type-C Port

#### Using the Wall Charger

1. Pull out the Prongs and connect to a wall outlet.
2. Plug a cable into the the USB or Type-C charging port and into a device.

#### Checking the Battery Level

1. Quick press the power button and the current percentage level will display on the digital screen.
2. Double Click the power button or in standby for about 30 seconds, the display and power will be turned off automatically.

#### Recharging the Multi-function Power Bank

There are two ways to charge the internal battery:

1. Use the Wall Plug & and an AC Outlet
2. Use the Type-C to USB Cable and a Power Adapter.

#### WARNING

- The power bank is NOT a toy and should be kept away from children.
- Please do NOT use the power bank in direct sunlight or extreme heat for extended periods of time.

- Please do NOT submerge the power bank in water.
- Please do NOT leave the power bank near the fire.
- Please do NOT subject the power bank to harsh chemicals.
- Please do NOT use the power bank if it has been damaged and/or modified.
- Please do NOT insert any foreign objects into the openings or port of the power bank.
- Please do NOT attempt to disassemble, repair, or open the power bank in any way.

#### FCC STATEMENT

This device complies with Part 15 of the FCC Rules. Operation is subject to the following two conditions:

- (1) This device may not cause harmful interference, and
- (2) This device must accept any interference received, including interference that may cause undesired operation.

Warning: Any changes or modifications not expressly approved by the party responsible for compliance could void the user's authority to operate the equipment.

NOTE: This equipment has been tested and found to comply with the limits for a Class B digital device, pursuant to Part 15 of the FCC Rules. These limits are designed to provide reasonable protection against harmful interference in a residential installation. This equipment generates uses and can radiate radio frequency energy and, if not installed and used in accordance with the instructions, may cause harmful interference to radio communications. However, there is no guarantee that interference will not occur in a particular installation. If this equipment does cause harmful interference to radio or television reception, which can be determined by turning the equipment off and on, the user is encouraged to try to correct the interference by one or more of the following measures:

- Reorient or relocate the receiving antenna.
- Increase the separation between the equipment and receiver.
- Connect the equipment into an outlet on a circuit different from that to which the receiver is connected.
- Consult the dealer or an experienced radio/TV technician for help.

#### RF Statement

The device has been evaluated to meet general RF exposure requirement. The device can be used in portable exposure condition without restriction.

## How to Use Correctly?



Centrally Placed



Plastic Case thickness < 4mm



Crookedly Placed



Magnetic Case



Bulky Case thickness > 4mm



Metal Ring Case



Credit Card Case



Made in China