



FREDDO

12-36 months

Item No: 658C/FR4040 CAT Tractor FTF

Instructions Manual

WARNING
ADULT ASSEMBLY
REQUEST.

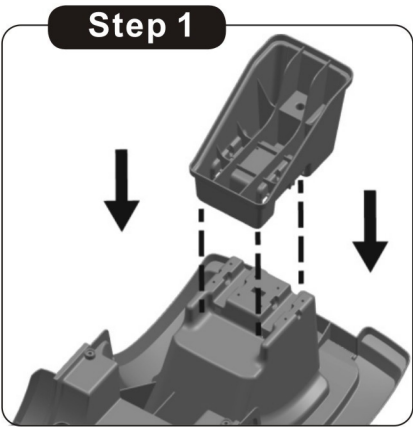


©2025 Caterpillar. CAT,CATERPILLAR,and their design and marks are registered trademarks of Caterpillar Inc.
Ningbo Prince Toys Co.,Ltd.,a licensee of Caterpillar Inc.

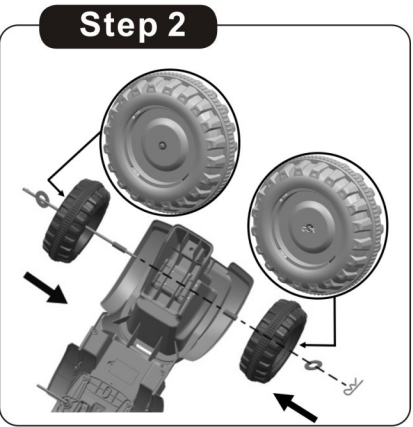
COMPONENTS LIST

1.Body 1pc	2.Steering wheel 1pc	3.Trailer 1pc
4.Seat 1pc	5.Exhaust-pipe 1pc	6.Front wheel 2pcs
7.Rear wheel cap 2pcs	8.Rear wheel 2pcs	9.Trailer wheel 2pcs
10.Front wheel cap 4pcs	11.Anti-tumble shelf 1pc	12.Trailer connector 1pc
13.J-sharped stick 1pc	14.Wheel axle 2pcs	15.Ring 6pcs
15.Washer 7pcs (1replacement piece)	16.Cotter pin 5pcs (1replacement piece)	17.Black screw 2pcs (1replacement piece)
18.Silver screw 4pcs (1replacement piece)	19.Toy 2pcs	

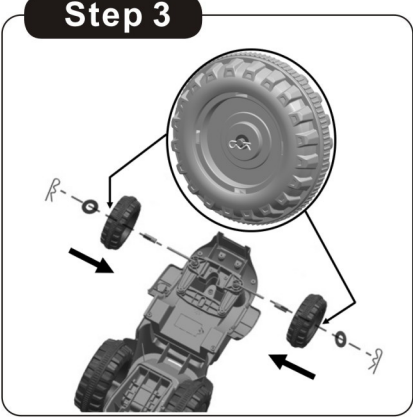
Tractor assemble



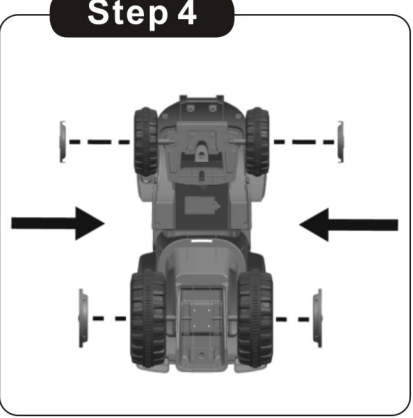
1.Place the anti-tumble shelf into the rear of the tractor body.



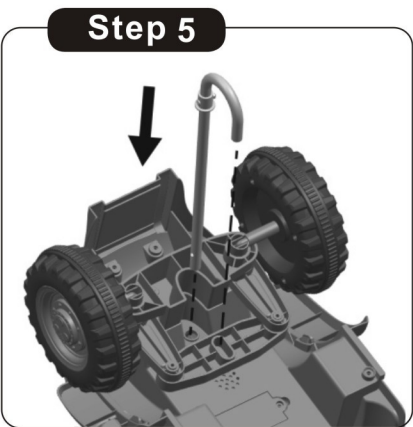
2.Insert the wheel axle through washer, rear wheel, plastic ring into the body, tighten using a cotter pin



3.Assemble the two front wheels, insert the plastic ring, wheel and washer, tighten using a cotter pin.



4.Place the two front wheel caps into the front wheels, and two rear wheel caps into the rear wheels.



5.Install the J-sharped stick at the assigned location as picture.



6.Loosen the bolt and nut in the steering wheel first, then place the steering wheel over the J-sharped stick, insert the bolt and tighten the nut with a screwdriver(not included)

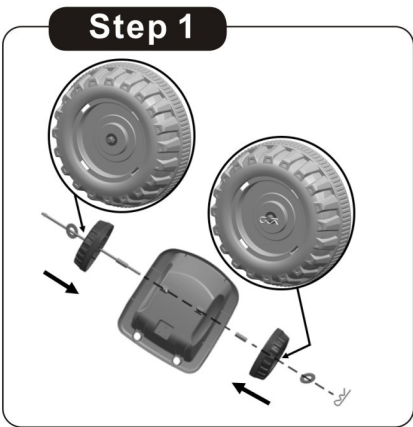


7.Assemble the seat, tighten with a black screw by a screwdriver(not included).

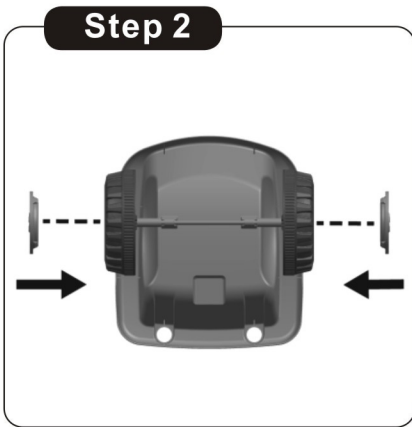


8.Insert the exhaust pipe, be certain the exhaust pipe is completely seated.

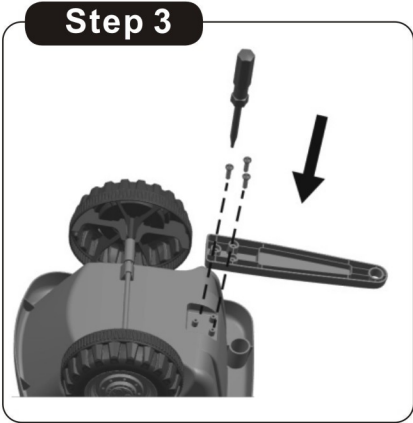
Trailer assemble



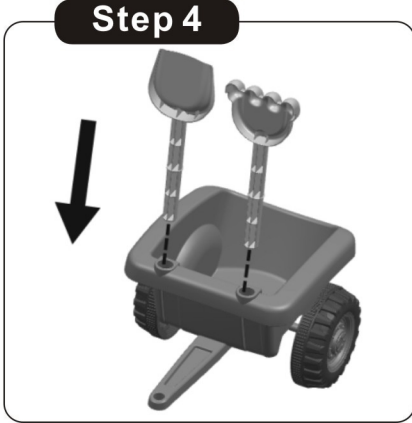
1.Insert the wheel axle through washer, trailer wheel, plastic ring into the trailer, tighten using a cotter pin.



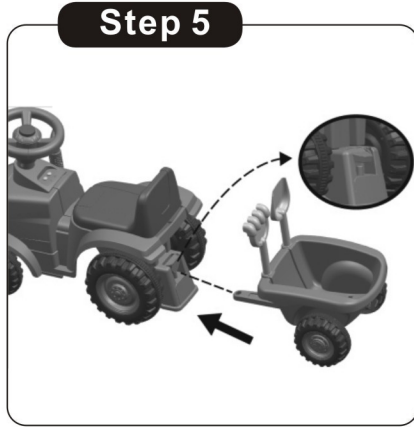
2.Place the two front wheel caps into the two trailer wheels.



3.Assemble the trailer connector with three silver screws by a screwdriver(not included)

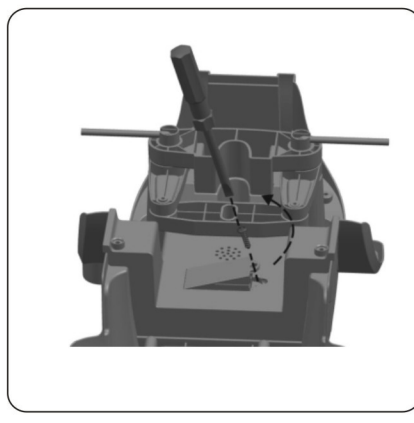


4.Insert the two toys into the holes of the trailer.



5.Open the lock and connect the trailer with tractor.

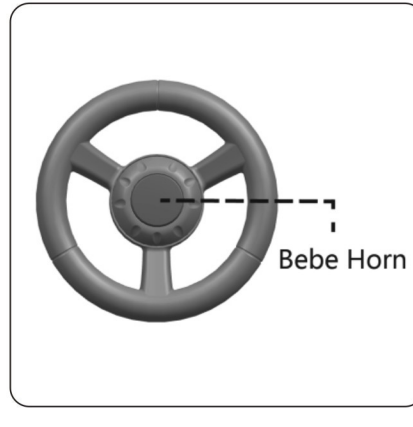
Battery change



Turn over the tractor body, and find the battery house. Loosen the screw with a screwdriver(not included). Put 2 AA batteries in the battery house, then tight the screw with a screwdriver(not included).



Function



Warning:

- 1-Ride-on car is designed for children up 12-36 months old. Ride's weight must not exceed 25kgs. as there is insufficient strength to support overweight.
- 2-Product is designed to seat 1 child as a time to avoid injuries.
- 3-Parental guidance and supervision are strongly advised to ensure safe riding.
- 4-Adult assembly and installation of all parts are required to ensure safety.
- 5-Batteries to be handled by adults.
- 6-Take care of riding and avoid going near streets, crossroads, all traffic areas, swimming pools, and stairs.
- 7-Without regular check of the product, it will cause overturn or fall.
- 8-Check to see occasionally that the nut and bolt on the steering wheel is tight and secure.
- 9-Dangers may present if the product is not correctly assembled.
- 10-Shoes must be worn in use.
- 11-The trailer is not suitable for transport children, and the load weight not exceed 1.5kgs.

Battery Handling:

- 1-Battery must be handled by adults only.
- 2-Always remove exhausted batteries.
- 3-Use AA size batteries only.
- 4-Alkaline batteries are recommended.
- 5-Always remove batteries when the unit is not going to be used for an extended period of time.
- 6-When replacing new batteries, always replace all batteries.
- 7-Do not mix old and new batteries.
- 8-Do not mix Alkaline, Standard (Carbon-Zinc), or Rechargeable (Nickel-Cadmium) batteries.
- 9-Do not dispose of batteries in fire, batteries may explode or leak.
- 10-Non-rechargeable batteries are not to be recharged.
- 11-Rechargeable batteries are to be removed from the toy before being charged.
- 12-Rechargeable batteries are only to be charged under adult supervision.
- 13-Batteries are to be inserted with the correct polarity.
- 14-The supply terminals are not to be short-circuited.