



# FREDDO

18-36 months

## Item No:H6/FR3090 Mini CAT ATV

Installation & operation Manual



**CAUTION:**

- This package contains small parts
- Adult assembly required
- Remove all plastic bags and tires prior to giving to children
- Protective equipment recommended
- Not to be used in traffic
- Keep this instructions for future reference

**WARNING**  
**ADULT ASSEMBLY**  
**REQUEST.**

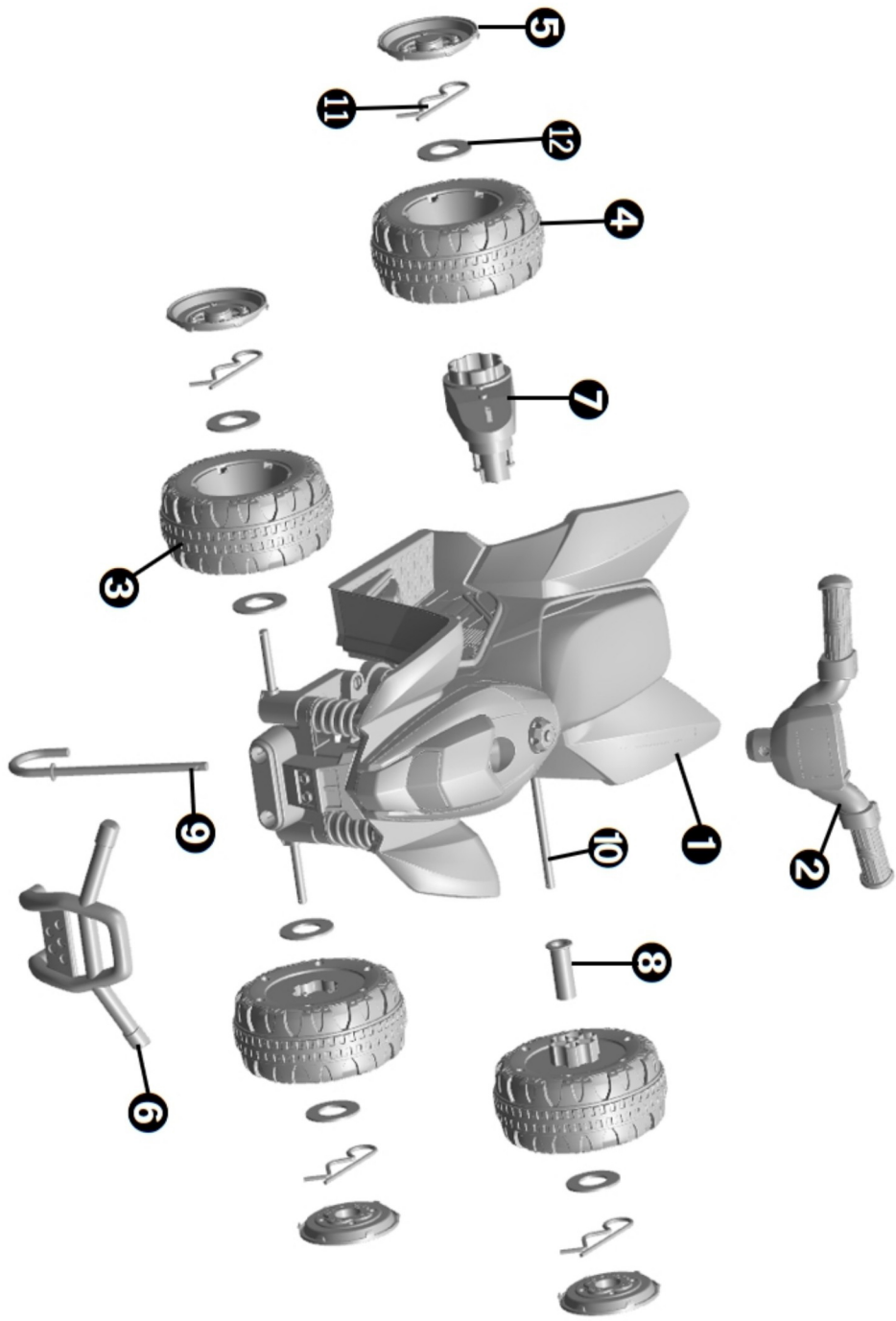
### I . SPECIFICATIONS.

Suitable Ages	18-36 months
Product Dimensions	63.5X38.5X43.5cm
Maximum Weight	25 kgs
Speed	2.8 km/h
Motor	30W
Charger	Input: AC 220V/110V
	Output:DC7.5V/500mA
Battery	6V4A/6V4.5A
Operating Ambient Temperature	0 - 40℃

### II . Components List

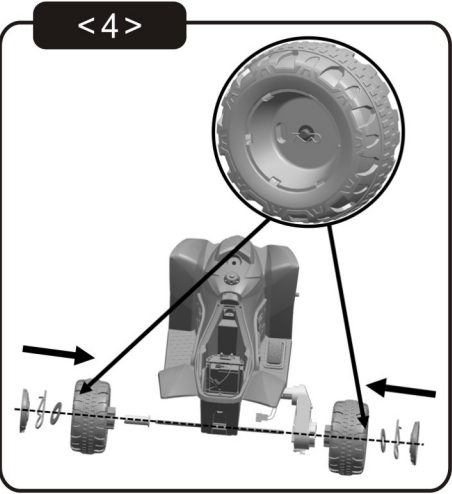
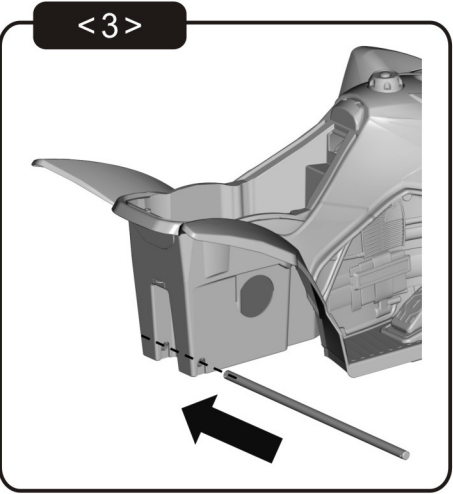
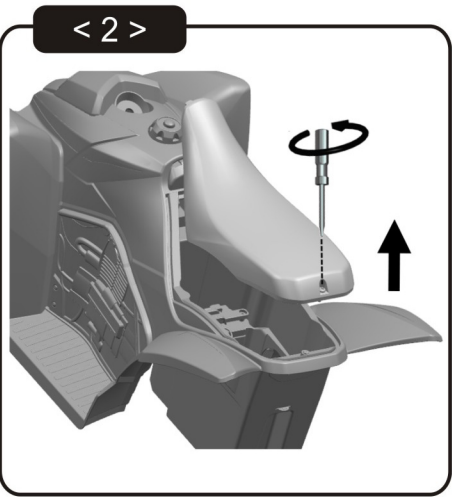
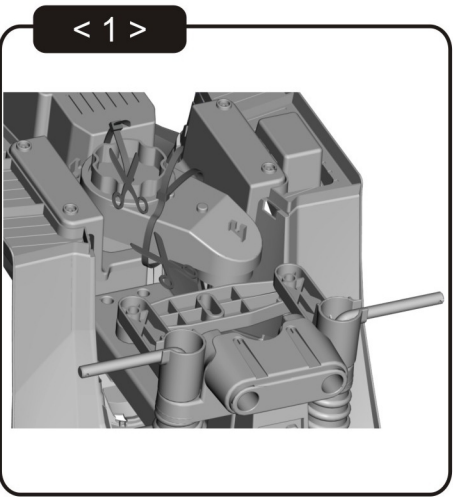
1.Body 1pc	2.Handle 1pc	3.Front wheel 2pcs	4.Rear wheel 2pcs
5.Wheel cover 4pcs	6.Bumper 1pc	7.Motor 1pc	8.Spacer 1pc
9.J stick 1pc	10. Axle 1pc	11.Cotter pin 5pcs (1pc replacement )	12.Washer 7pcs (1pc replacement)
13.Charger 1pc			

2

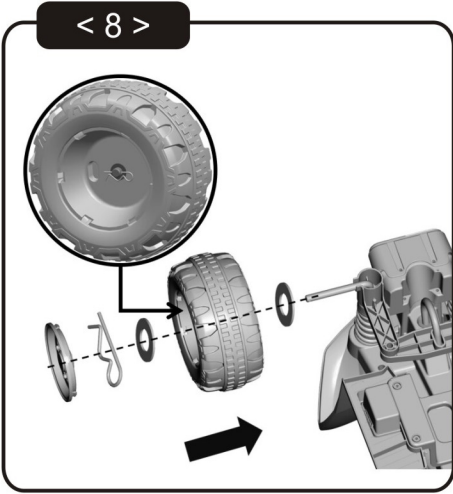
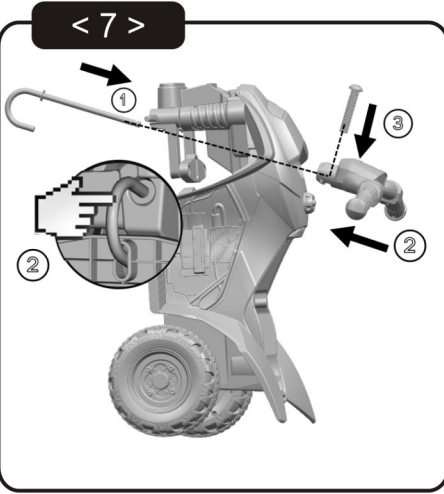
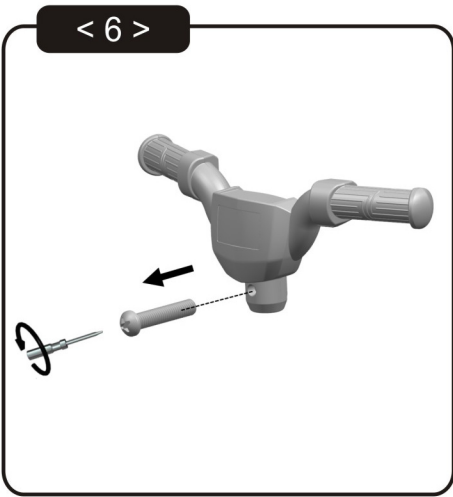
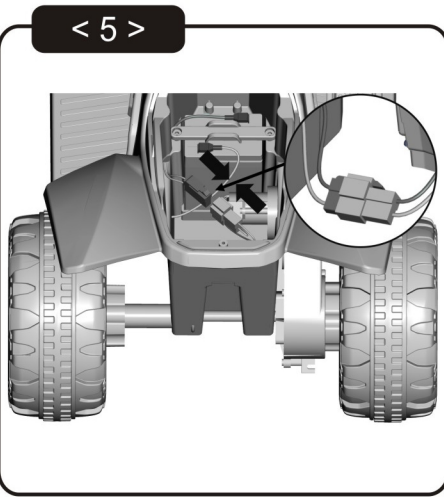


3

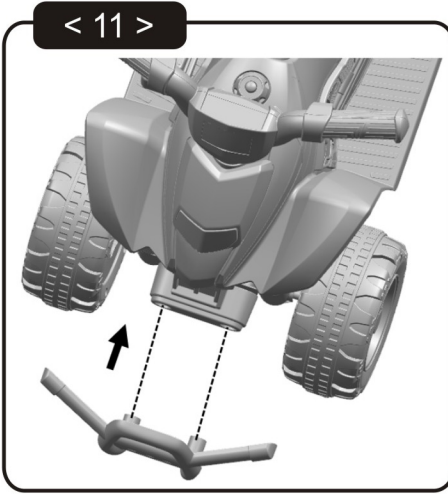
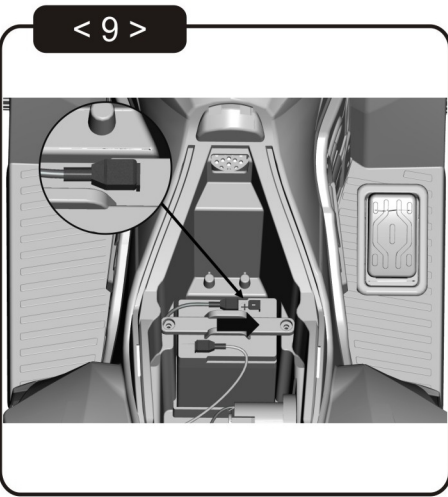
### III. Assembly Instructions



4

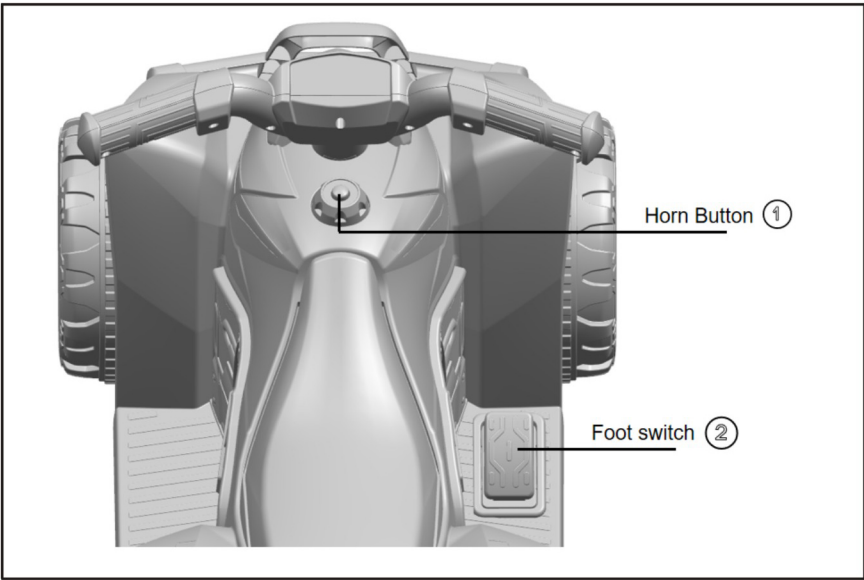


5



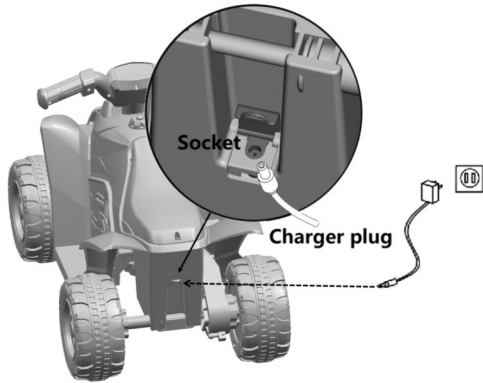
6

### IV. Function and Operation



### V . Battery and Charger Operating Guide

1. The charging socket is located at the rear.
2. The battery and charger which are provided or recommended can be used only.
3. Please do not play with the charger and battery because they are not toys.
4. The battery charging operation is carried out only by adults but not children.
5. The battery shall be fully charged before first use; the battery charging time shall be 9-10 hours and can not exceed 15 hours.
6. The lukewarm phenomenon of the charger and battery will occur during charging.



### 1.Battery warning:

- 1)When storing the car for long period of time, charge the battery until full then turn off the power switch. The battery should be recharged once every other month, or may otherwise have a shorter life span and risk deteriorating.
- 2) When installing the battery, it is important that the positive and negative poles are correctly connected. Short circuiting of positive and negative poles may result in damaging the toy.

7

### 2. Product warning:

- 1) There may be potential sharp edges, sharp points or small parts before the assembly of this product, and therefore this product shall be assembled by the adult.
- 2) To avoid suffocation, keep the plastic bag away from children. Dispose of all bags immediately.
- 3) The children shall correctly use the car under the adult guidance and supervision, otherwise they may make themselves or the others injured.
- 4) The car is suitable for being driven on the flat ground and strictly prohibited to be driven in dangerous places such as public roads, slope and near swimming pool to prevent traffic and drowning accidents
- 5) Please put on shoes and protection equipment before use, putting on the helmet, safety gloves, knee pads, etc. helmet, gloves, knee pads, etc.  
Regularly check whether the battery, charger, wire, plug, casing and other parts are damaged; if the damage occurs, please cease to use this product until it has been repaired.  
This product is only allowed to be used by a child; the maximum load is 25kg, and therefore the overload is not allowed.  
Keep away from fire.  
The product instructions shall be kept as they contain important information.

### 3. WARNING:

**WARNING**

To reduce the risk of injury, adult supervision is required.  
Strictly forbidden using on the roadways, near motor vehicles, slopes, swimming pools and where there is water;  
Please wear shoes; this toy car can only be used simultaneously by one person.  
Keep away from kids before assembled by adult, as there are potentially sharp edges, points, or small parts.

**WARNING**

Do not mix alkaline battery, standard (carbon-zinc) battery or rechargeable (nickel-cadmium) battery.

**WARNING**

Protective equipment should be worn. Not to be used in traffic.

8