

1. Inserting and Replacing Irrigation Tip

Insert irrigation tip onto arm. Hold irrigation tip and rotate the connector clockwise to secure. (Diagram A)

2. Charging the Unit

Charge unit using USB-C port and included charging cable as shown in image. During charging each LED will illuminate indicating percentage of charge at each solid LED. When all LED's are solid the unit is fully charged. Low Battery Indicator all 3 LED's will flash at the same time indicating the battery is low and the product needs to be charged. (Diagram B)

3. Pressure Settings

There are 3 mode pressure settings.

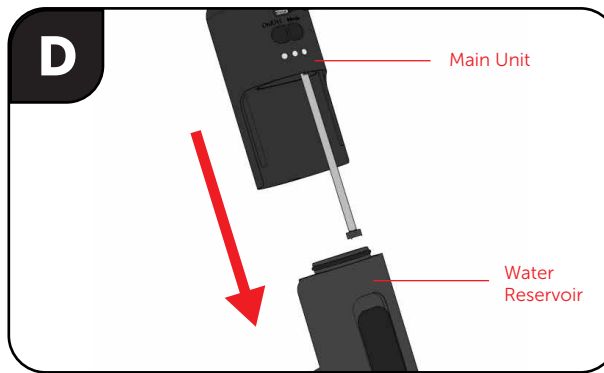
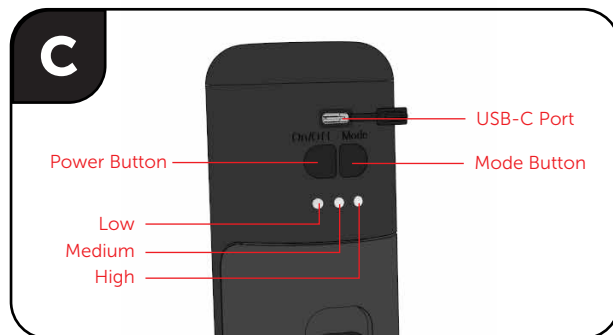
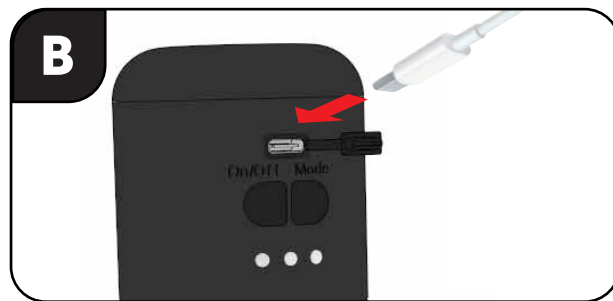
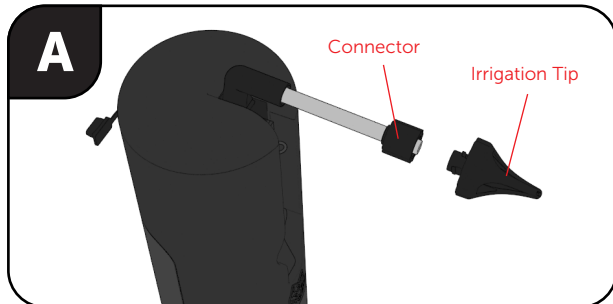
Low - Pressure level 1, Medium - Pressure level 2, and High - Pressure level 3. (Diagram C)

4. Removing the Water Reservoir

Pull reservoir down from main unit. (Diagram D)

5. Cleaning the Water Reservoir

- Remove reservoir and wash the inside and outside of tank with dishwashing solution and warm water.
- Dry exterior of tank with a dry cloth and allow inside to air dry.



ENT Recommendations

Consult your physician before use if you have a pre-existing condition.

Our triple spray irrigation tip design directs water to the sides of the ear canal for gentle wax removal.

ALWAYS USE WARM WATER!!!

Start your ear irrigation on pressure level 1. Once you become comfortable you can then move onto levels 2 and do the same for level 3.

For general ear cleaning pressure level 1 is adequate and can be used 2 times per week in the shower or over a sink. Approximately 10-15 seconds is all it takes in most cases to clear out wax.

When finished, to remove excess water from your ear canal, tilt your head in the direction of ear to help any remaining water drain. Pull gently on your earlobe to help straighten your ear canal allowing water to flow. Use a soft towel to dry your ear.

For impacted or ears with built up wax it could take a few tanks of water in each ear at levels 2 and 3. If needed you can use a softening agent before use to help soften ear wax. Allow the solution to sit in the ear canal 20-30 minutes prior to irrigation.

This device complies with part 18 of the FCC Rules. Operation is subject to the following two conditions: (1) This device may not cause harmful interference, and (2) this device must accept any interference received, including interference that may cause undesired operation.

NOTE: This product has been tested and found to comply with the limits for a Class B digital device, pursuant to Part 18 of the FCC Rules. These limits are designed to provide reasonable protection against harmful interference in a residential installation. This equipment generates, uses and can radiate radio frequency energy and, if not installed and used in accordance with the instructions, may cause harmful interference to radio communications. However, there is no guarantee that interference will not occur in a particular installation. If this equipment does cause harmful interference to radio or television reception, which can be determined by turning the equipment off and on, the user is encouraged to try to correct the interference by one or more of the following measures:

- Reorient or relocate the receiving antenna.
- Increase the separation between the equipment and receiver.
- Connect the equipment into an outlet on a circuit different from that to which the receiver is connected.
- Consult the dealer or an experienced radio/TV technician for help.

Changes or modifications not expressly approved by the party responsible for compliance could void the user's authority to operate the equipment.

WUSH™

POWERED EARWAX REMOVER



INSTRUCTIONS

Water not spraying? Consult priming instructions inside.

©2024 Allstar Innovations
Wush is a trademark of Allstar Innovations
Distributed by Allstar Innovations

Black Wolf is a registered trademark of Black Wolf Opco, Inc.

Made in China | Patent Pending
Product Color and Appearance May Vary

BC

PLEASE VISIT [BLACKWOLFNATION.COM](https://blackwolfnation.com) FOR
MORE GREAT PRODUCTS & SPECIAL OFFERS

PLEASE VISIT [BLACKWOLFNATION.COM](https://blackwolfnation.com) FOR
MORE GREAT PRODUCTS & SPECIAL OFFERS

Components



WUSH™ Ear Cleaner



3 Irrigation Tips

Important safety instructions.
Please read all instructions before use.
Use this product only as indicated in
these instructions or as recommended
by your medical professional.

WARNING:

- Consult your physician before use if you have a pre-existing ear condition.
- DO NOT USE if you have ear tubes (tympanostomy tubes), have had ear surgery, if you suspect/have a perforated eardrum, or have an ear infection. Please consult your ENT doctor.
- Only use warm water for earwax removal (approximately body temperature, 98° Fahrenheit). Do Not use cold water or hot water as it may cause dizziness.
- Using saline or sterile water is not required
- Discontinue use immediately if irritation, bleeding, or other trauma to the ear canal occurs.
- You may experience loud sounds and pressure during use. This is to be expected and normal. If at any point during use you feel pain, please stop immediately, and consult a physician.
- Water Resistant IPX 5 – can be used in the shower.
- Do not use on children under the age of 15.

CHOKING HAZARD:

Keep out of reach of children. Do not allow children to play with or near this item. This is not a toy for children.

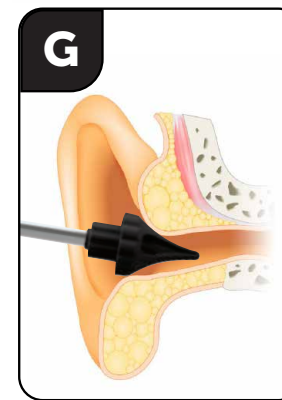
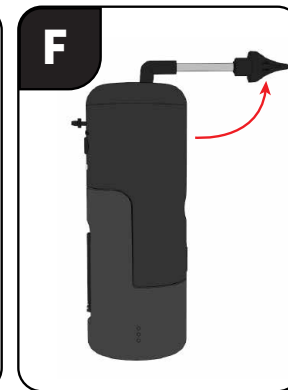
If product becomes damaged,
please discard immediately.

Product name: WUSH Powered Earwax Remover Rechargeable
Model No.: WUSH1112
Brand name: BlackWolf
Power input: USB DC 5V 1A

Get Started

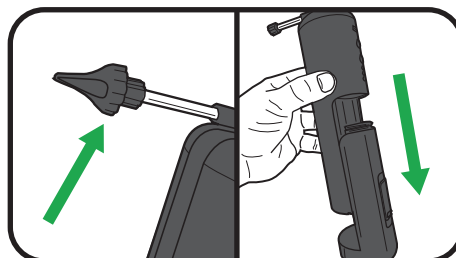
Read all instructions before first use.

- Before using the device for the first time rinse and allow the water reservoir tank to air dry.
- Charge unit using USB-C cable
- Fill water reservoir. USE WARM WATER ONLY!!! Open the quick access door and fill with warm water (approximately body temperature of 98 F degrees). (Diagram E)
- Lift arm. (Diagram F)
- Set pressure (recommend starting on the low setting for first use).
- Gently insert the irrigation tip into the ear canal. (Diagram G)
- Press power button to start the water pump. When WUSHing your right ear, tilt your head to the right, so water and wax flow out. When WUSHing your left ear, tilt your head to the left, so water and wax flow out.
- Use in shower, over a sink, or place a cup underneath ear to capture draining water. (Diagram H)
- When finished, turn off the unit and empty any remaining water in the water reservoir.

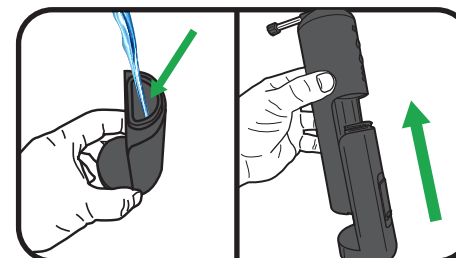


Priming The Pump:

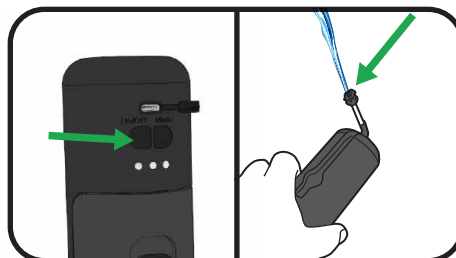
Water not spraying? Consult priming instructions below.



1. Remove the water reservoir and ear tip



2. Fill the water reservoir and reinstall back onto device



3. Power on the device then fill the metal tube with low pressure running water for 15-20 seconds.

NOTE: If the device is still not spraying water, repeat step 3.