

The background is a solid dark blue color, densely populated with various abstract, organic shapes in bright colors: orange, pink, green, and teal. These shapes include circles, teardrops, handprints, and irregular blobs, creating a playful and artistic pattern.

Gift Box
7+

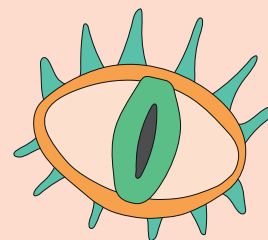
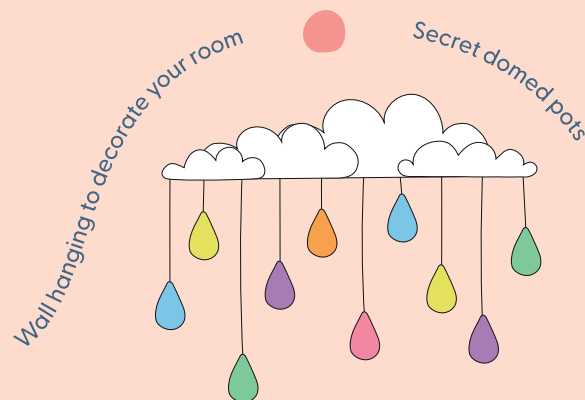
A GUIDE TO ...
POTTERY

Hello! it's nice to meet you!

Welcome to your Sculpd Kids Pottery guide! In this handy booklet you will find everything you need to create coasters for your drinks, a wonderful wall hanging for your room, a secret domed treasure pot and a cool coiled stationary holder.

You will also have extra clay to freestyle and make whatever you fancy. The great thing about clay is that you can make something, then squish it down and start again! The possibilities are endless!

Here's what you'll be making . . .



You don't need to finish everything all at once. Take a look through this booklet and decide which activity you would like to do first.



What's in your box . . .

Let's start by unpacking everything in the box and laying it out on your table. Take a look at the illustrations below and see if you can spot them all!

1 Guide

5 5x Clay cutters

9 Knife and spoon tool

2 Sponge

6 Pencil case

10 Large and small paint brushes

3 2x Bags of clay

7 Rolling pin

11 String

4 Alphabet stampers

8 Ribbon tool

12 10x Paints



Before you Start . . .

Top Tip 1

Please don't put the outer box in the recycling straight away, you will need it to complete one of the activities!

Top Tip 2

Our paints will wash out of your clothes easily, but if you have an apron or old t-shirt, it's time to put it on! Making a mess is very fun, but we don't want to get paint where it shouldn't be. So protect your table with a wipeable tablecloth or newspaper if you can.

Top Tip 3

You create your best works of art when your brain is happy, healthy and ready to engage! So before you start, let's help your brain be the best it can be. Are you hungry? Have a little snack. Anything annoying you? Talk it out. Ready to create? Okay, let's go!



Exclusive Online Content

● Tutorial Videos ● Calming Playlist ● Inspiration Gallery ● Guardian Page

If you feel you might need some more help or inspiration, do not fear! We have created a special place online to help you get the most out of this kit. We've packed it full of video tutorials, inspiration galleries and even a specially created playlist to listen to while you are painting! Scan the QR code or visit the link to access the fun!

Learn the lingo

We know you can sculpt like a potter, but can you talk like one? Have a go at learning some of the pottery terms below. If you're good at remembering new things, ask someone to quiz you on them later!

Pottery

Pottery is the process of making objects out of clay. Some people make objects which don't have a use, these objects are called 'sculptures'.

Potter

A 'potter' is the name given to someone who makes pottery. So today you are a potter!

Sculpt

To sculpt clay means to purposefully change the shape of the clay. You can do this with your hands or with your tools.

Slab

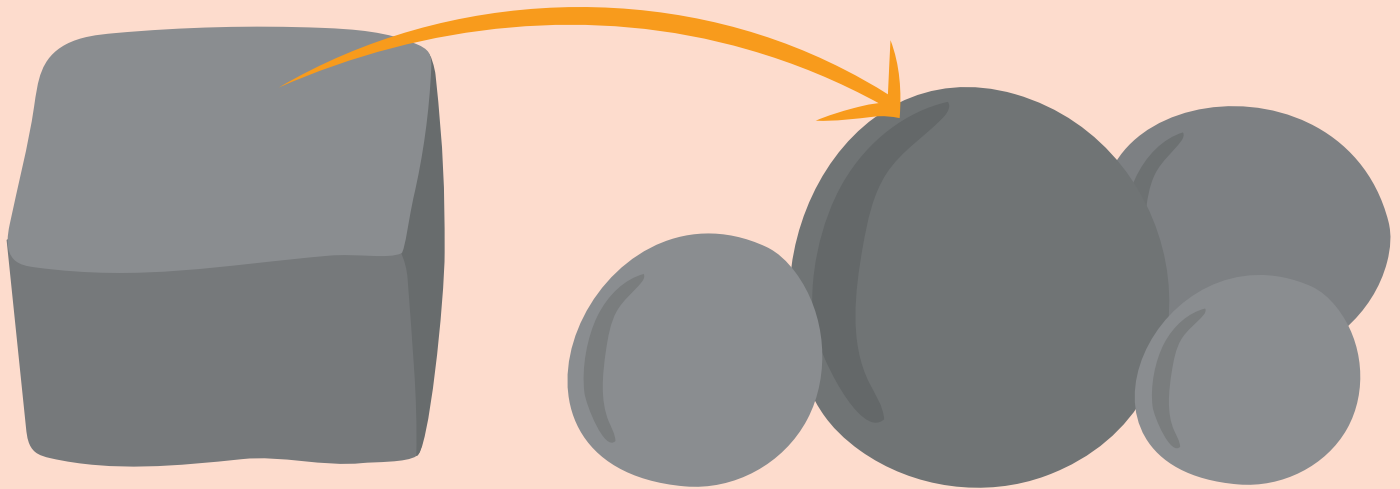
A slab of clay is a piece of clay that has been flattened into a sheet. This is often done using a rolling pin.

Coil

A coil of clay is a long length of clay that looks a lot like a worm or snake. It's made by rolling the clay with your hands.

warm up your clay . . .

Before you start the activities, spend some time getting your clay ready. It might be a little cold and stiff at first, so break it off into manageable sized chunks (a handful is good) and soften it by squishing and rolling it in your hands. The clay should warm up and become a lot easier to work with.



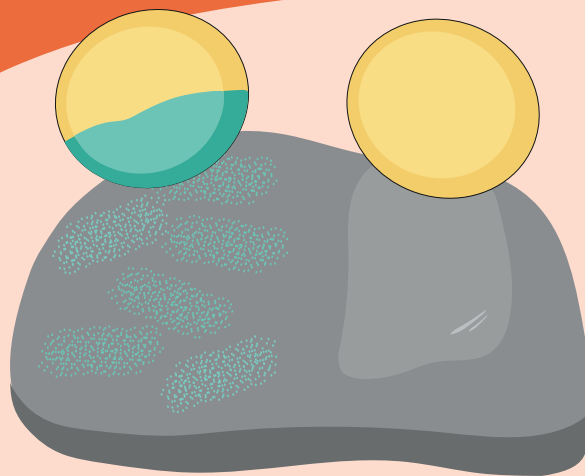
The possibilities are endless
with a hand full of clay, and a mind full of play!

Get to know your tools . . .

You have lots of exciting new tools in your box! On the following pages you will find out how these tools can help you create amazing pieces of pottery. Take a look below to see what these tools can do, and how they can be used.

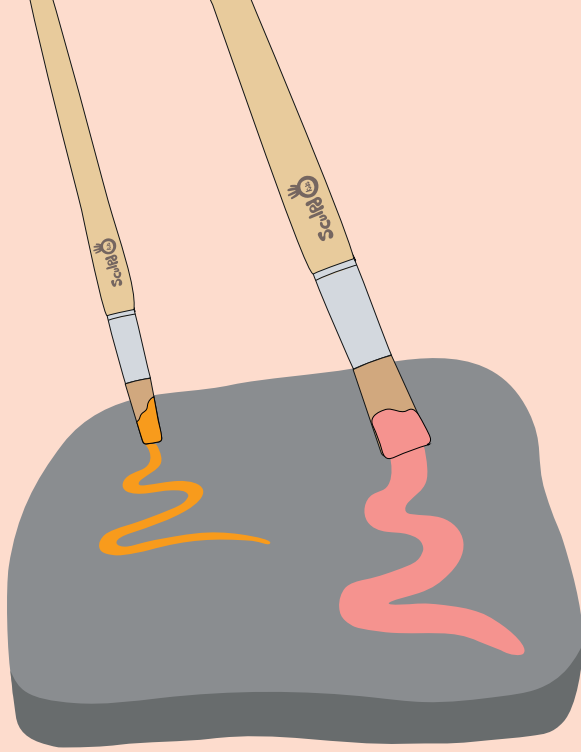


Take a look at the pottery tool videos in the online content to watch these tools being used.



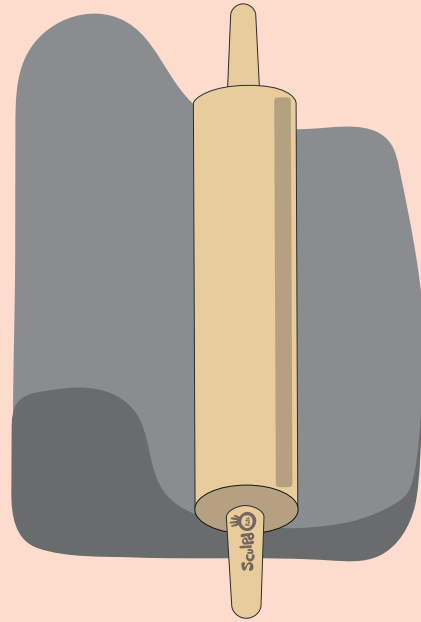
Sponge

The sponge can be used in two different ways. You could lightly wet your sponge and use it to smooth the surface of the clay. This will get rid of any lumpy bumpy bits and leave a nice even finish. Or, you can use a sponge to cover the clay in paint by dipping the sponge in your chosen colour of paint, and then dabbing it onto the clay once it has dried.



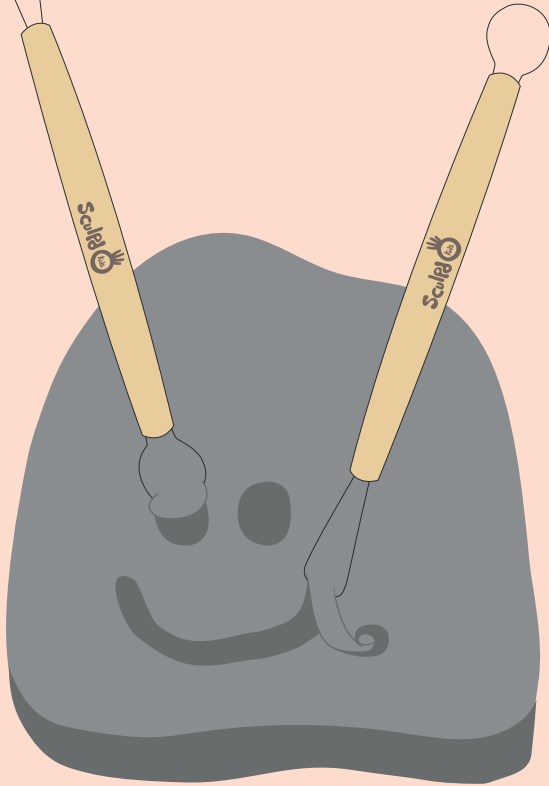
Paint brushes

You have two paint brushes in your box - a small one and a large one. The large brush is great for creating bigger paint strokes and filling in backgrounds. If you want to coat your creations in a base colour, the large brush or sponge is ideal. The small brush is excellent for creating more accurate strokes and fine detail, like the legs on an ant or wings on a bee!



Rolling Pin

The rolling pin is a fun tool and one of the most useful! Use it to push down on the clay and roll it back and forth along the surface to flatten it out. This is the easiest way to make a 'slab'. Keep rolling the rolling pin while pressing down until the clay is at the thickness you need.



Ribbon Tool

You can use the ribbon tool to cut away bits of clay. You will see that your ribbon tool has two differently shaped ends. The rounded end is great for creating circles while the pointed end is great for chiselling out thin troughs in the clay. Have a go at trying to carve out a smiley face!



Knife and Spoon Tool

This tool can be used in many ways! Cut through your clay with the knife end of the tool by pressing firmly and pulling it through the clay. Why not try drawing on the clay by using the tool like a pencil? The spoon end of the tool can be used to scoop, or use the curved edge of the spoon to press patterns into the clay.



Alphabet Stampers

The alphabet stampers can be used to write words or messages on your creations! When you're ready, gently push the stamper into the clay until the rubber square touches the clay's surface, give it a wiggle, and then pull it away.



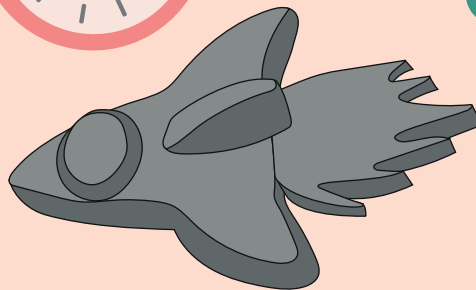
Cutters

To use your clay cutters, you'll need to roll out a slab with your clay about 1-2cm thick. You can look back at the learn the lingo page to remind yourself of what a slab is if you've forgotten. Next, place your cutter onto your slab and push down on the yellow rim until the cutter can't go down any further. Remove the clay from around the cutter and gently push the shape out from the centre of the cutter.

Drying and Painting . . .

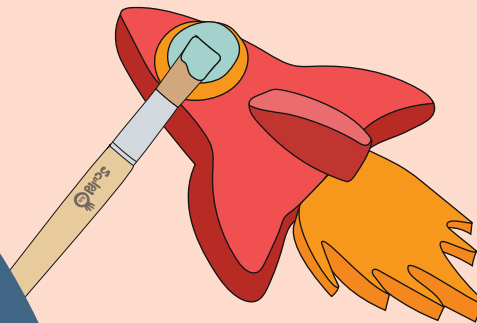
This is a handy page to refer back to once you have finished making your clay creations. When you are happy with what you have made from the clay, you will need to let it dry before you can paint it. Although it's tempting to paint your pottery as soon as possible, it is important to let the clay dry thoroughly or you may risk the paint peeling off!

24-48 hrs
LATER



1 Leave your clay pieces to dry in a safe place where they won't get knocked. They'll need to dry for 24 to 48 hours. If you can leave them in a warm room, that's even better!

2 Once your clay is thoroughly dry you can begin painting! Use the colour chart on the opposite page to help you, and check out the online content to watch a pottery painting tutorial video.



Online Content

Check out the online content for colour mixing and clay painting tutorial videos.

Colour Chart

Once you start painting, you may want to mix up your own unique colours. So here is a quick guide to help you do just that! You can look back at this when you are ready.

Red	+	White	=	Pink
Red	+	Green	=	Brown
Red	+	Blue	=	Purple
Red	+	Yellow	=	Orange
Blue	+	Yellow	=	Green



Add black to any colour to make it darker!



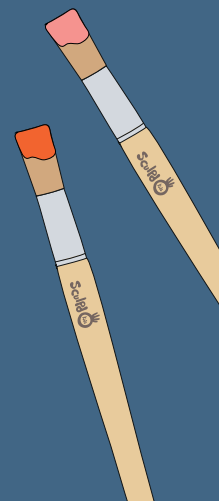
Add white to any colour to make it lighter!

How to colour mix

- 1 Start by choosing which colour you want to create. Then look at the chart to see how you can make it. For example, if you want to make pink, you will need red and white.
- 2 Using a brush, put a bit of the red and white paint onto a washable or disposable plate.
- 3 Mix together thoroughly until the colours have completely blended.
- 4 Add more red for a deeper pink, or add more white for a lighter pink.

Top Tip

When you are ready to paint, always clean your brushes before changing colours - otherwise everything will turn brown!



Activity 1

Coil Pots

For this activity you will be making coil pots! Take a look at the images on the next page for inspiration, then decide what kind of coil pot you would like to make.

step-by-step

1



Start by forming a small amount of clay, around 5cm wide, into a smooth ball that fits in the palm of your hand.

2



Next, flatten the ball with your rolling pin or by pushing down on it with a flat heavy object.

3



You want your slab to be a nice even circle. So use the knife tool to cut off any uneven excess. Then, smooth the edges with a sponge or a wet finger.

4



To make the coil, create another ball of clay in the palm of your hands. The longer you need your coil to be, the more clay you will need.

5



Next, squish the ball into a long stick shape. Don't worry if the clay looks very lumpy and bumpy at this stage.



Place your stick of clay onto a flat surface and glide the palm of both your hands back and forth over the top of the clay.



This should force the clay to start rolling. Continue to do this until all the lumps and bumps have been rolled out.



If you can spot any chunkier sections of your coil, roll this section a few extra times with just one hand.



Repeat this process until you have a few coils. We suggest making at least five 3cm thick coils so your pot will be tall enough to hold a few items.



Next, create a thick paste by mixing some water and a small lump of clay (about a 2cm ball) together. This is called 'slip', and it acts like glue.



Score the section of your base slab where the coil will sit and then cover it in a thin layer of slip.



Lay a coil on the base and gently press the ends of the coil together. Use your finger or a tool to blend out the join.



Using your knife tool, score the top side of your first coil and then coat it with a thin layer of slip. Lay the next coil on top and give it a little wiggle.



Repeat this process with more coils, remembering to score and slip each surface before you join them together. This will make your joins extra strong.



Once all your coils have been added, use the sponge to smooth out the joins on the inside of your piece as well as the outside. Try to create a nice smooth finish.



Now its time to add some decorations. You can add clay elements, like a snake's head or a tail, or you could engrave patterns into the clay using your tools.



Ta da! You're a coil pottery pro! Leave to dry for 24 - 48 hours. Once it has thoroughly dried you can paint your creations.

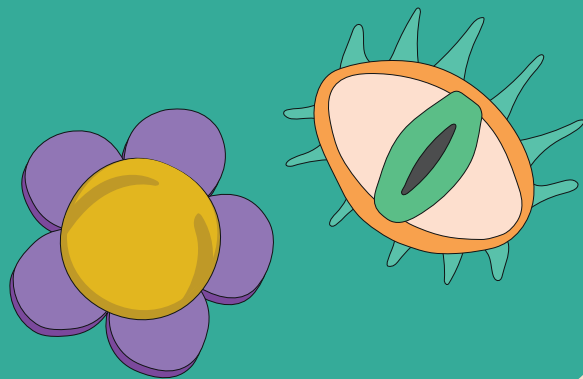
Inspiration



Activity 2

Secret domed Pot

For this activity you will be making domed pots that have a sneaky section to hide secret treasures in. Have you ever wanted a safe place to keep coins, sweets or secret notes safe? Well now you can make your very own secret pot! Take a look at the images on the next page to get some inspiration!



step-by-step



Tear off a handful of clay from your block and soften it like you have previously practiced. Once soft, you can begin forming a slab.



Place the clay on a flat surface (baking paper is great if you have any) and roll it out to roughly the thickness of one of your fingers.



This may take a few rolls of the rolling pin so ask for help if you need it. Try to get a nice smooth, flat, and even finish if you can.



Now you need to decide what shape you would like to make. The pots are made of a base slab and a domed pot so think about what shapes they will need to be.



With the knife tool, lightly draw on the clay the outline of your base shape. This should be no bigger than 10 cm wide. When you're happy, you can cut out your shape properly.



Take some time to smooth out the edges of your base shape. You can use your fingers to do this or lightly wet a sponge to smooth down the surface of the clay.



Now it's time to create the dome. Tear away a similar sized lump of clay and soften it in the same way you did before. Keep your base shape nearby.



Take your clay and squish it into a ball that fits nicely in the palm of your hand. Try to make it as smooth and as round as possible.



Next, slowly press your thumb into the centre of the clay ball until it's just over halfway through.



Use your fingers and thumb to pinch out the wall of your pot. Turn the clay as you pinch in a smooth motion.



Change the position of your hands so that your fingers are inside and your thumb is outside. Pinch the sides upward and outward.



Turn your dome over and see if it aligns with your base shape. The dome needs to be the same size as your base shape. If it is too small, keep pinching!



Now it's time to add decorations. Use your tools to mark the clay or add on clay sections using slip. To make slip, mix some water with clay to create a thick paste.



Almost done! Pat down any lumps and smooth over any edges using a damp sponge to give your pot a silky smooth finish. Next, let it dry for 24-48 hours.



Time to paint! You can refer back to the painting page for helpful tips or watch the painting tutorial video in the online content. What will you store in yours?

Inspiration



Activity 3

Wall Hangings

Now it's time to begin our personal favourite activity: wall hangings! You will need some of the cardboard from your box so keep it close by.

Begin by deciding what you would like to create. Take a look at the next page for inspiration. You will be making the hanging parts from clay and the hanger from cardboard.

Roll out a large amount of clay into a slab using your rolling pin. Start by using about half a pack of clay, although you won't end up using all of it.



With the knife tool, lightly draw the outline of your chosen hanging shapes onto the surface of the clay. When you're happy, cut out these shapes.



Now you need to decide how you would like to hang your clay pieces. If you have extra strong all purpose glue you can glue them to the string. Or...



...you can create a hole in the top of your creation wide enough for the string to pass through. The best way to do this is to use a skewer. Be careful, as the skewer is sharp!



Use the bottom side of the insert in your box to create the hanger. Draw out the shape you wish to cut out using a pen or pencil.



Carefully cut around the shape you have drawn out on your cardboard. You can get an adult to help you with this if your shape is detailed.



Use the paint in your kit to cover the pattern on the hanger. If you want to paint it a light colour like yellow or white, it may need a few coats.



Ask an adult to pierce holes along the bottom edge of your hanger. You will need a hole for every piece you want to hang. Alternatively you can glue the string to the back of the hanger.



Now it's time to let your clay pieces dry. Leave them in a warm room for 24-48 hours before painting. After you've painted your pieces leave them to dry before threading the string.



While you wait, make another hole at the top of your hanger. You will use this to loop string through and hang it on the wall.

12



When the paint on your clay pieces has fully dried, you can begin to attach the string. Ask an adult to help you with this bit.

13



Glue the string to the back of the clay pieces or tie the string around the hole. You will need to tie the string off securely, preferably with three knots.

14



How would you like your clay pieces to hang? You will need longer sections of string for lower hanging pieces. Let your adult helper know, and ask them to attach the string for you.

15



Thread the string through the holes along the bottom edge of your hanger and tie them off securely. Alternatively you can glue the string to the back of the hanger.

16



Finally, loop a length of string through the hole you made in the top of your hanger. You are now ready to hang your creation on the wall!

17



You can make your wall hanging extra secure by adding sticky tac or velcro strips to the back of the hanger.

InSPiration



Activity 4

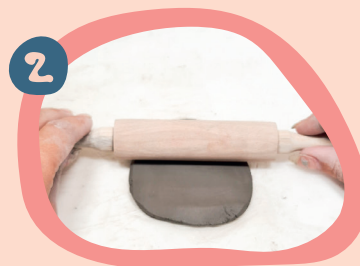
Coasters

For this activity you will be making coasters! Decide whether you want to make three or four coasters, and what shapes you want them to be... the choice is yours.

step-by-step



Start by deciding what shape you would like your coasters to be. Take a look at the page opposite for some inspiration.



Create a slab using the rolling pin to flatten out the clay into a sheet around 1 cm thick.



With the knife tool, lightly draw onto the clay the outline of your chosen shape. When you're happy, cut it out. Use the sponge or your finger to smooth the edges of the clay.



It's time to add detail to your coasters. Use your tools and alphabet stampers to help you add decoration. What will you write?



Leave your coasters to dry before painting them. How will you paint them? The glitter paint works well as a top coat to seal your coasters.

Inspiration



Aftercare Equipment

Wash your paintbrushes and palette before the paint has dried. Store paint brushes with the brush end facing upwards. Never leave brushes sitting in water!

Make sure all your paint lids are back on your paint pots before you pack them away to avoid the paint drying out.

Recycling

If throwing away, please recycle any paper or card elements from your kit. Dispose of contents and containers in accordance with all local, regional, national or international regulations.

You can keep your outer box to store your new art materials! If you don't want to keep your new art tools, please consider giving them to a friend or family member or donating them to charity. Let's pass the joy around!



Health & Safety

All of our children's products have been tested to ensure their safety. So masterpieces can be made worry free!

Paint: The paint can be harmful if consumed. Do not get in eyes or mouth. Seek medical attention if this occurs. Rinse off skin to avoid any irritation.

Keep product away from children under 4 years of age.

For more information on Sculpd Kids's products, visit our website at www.sculpdkids.com or contact us at Sculpd Kids Ltd, Unit 10 Boundary Business Court, Mitcham, CR4 3TD, United Kingdom.



sculpdkids

Show us what you've made!

We know you have probably made some amazing pieces of pottery, and we don't want to miss out! We would love to see what you have made so please take a pic and share it with us on Instagram! Your photos and video may even be featured on our platform for the world to see!

There's always more in store!

Gift Boxes

If you enjoyed this craft kit, there's plenty more where it came from! From painting to mosaic and fairy lights to DIY bowls, there is something for everyone. We will continue to keep growing our range so stay tuned!

Subscription Boxes

If you want a burst of creative joy in your life each month, then why not sign up to our subscription service that delivers a new craft to your door every month!

Painting

String Lights

DIY Bowl

Mosaic

And so much more!



Attention Adults!

“Every child is an artist. The problem is how to remain an artist once you grow up”

Don't worry, we've got that covered too. Sculpd Kids has a parent company, simply named Sculpd. It features craft kits for adults containing everything you need to create plant pots, trinket dishes, vases, candles, sculptures, paintings and everything in between. Whether you Sculpd solo, on a date night, or part of family fun, there's something for everyone on every occasion!



Pottery Kit



Candle Kit

Have a Snoop!

Take a look at what's in store by scanning the QR code to the right or visit us online by searching...

www.sculpd.com



Ultimate Bundle



Abstract Painting Kit

Hope to See
you soon!
Goodbye



KIDS-GIFT-V1-POTTERY-7-9

UK
CA
CE

