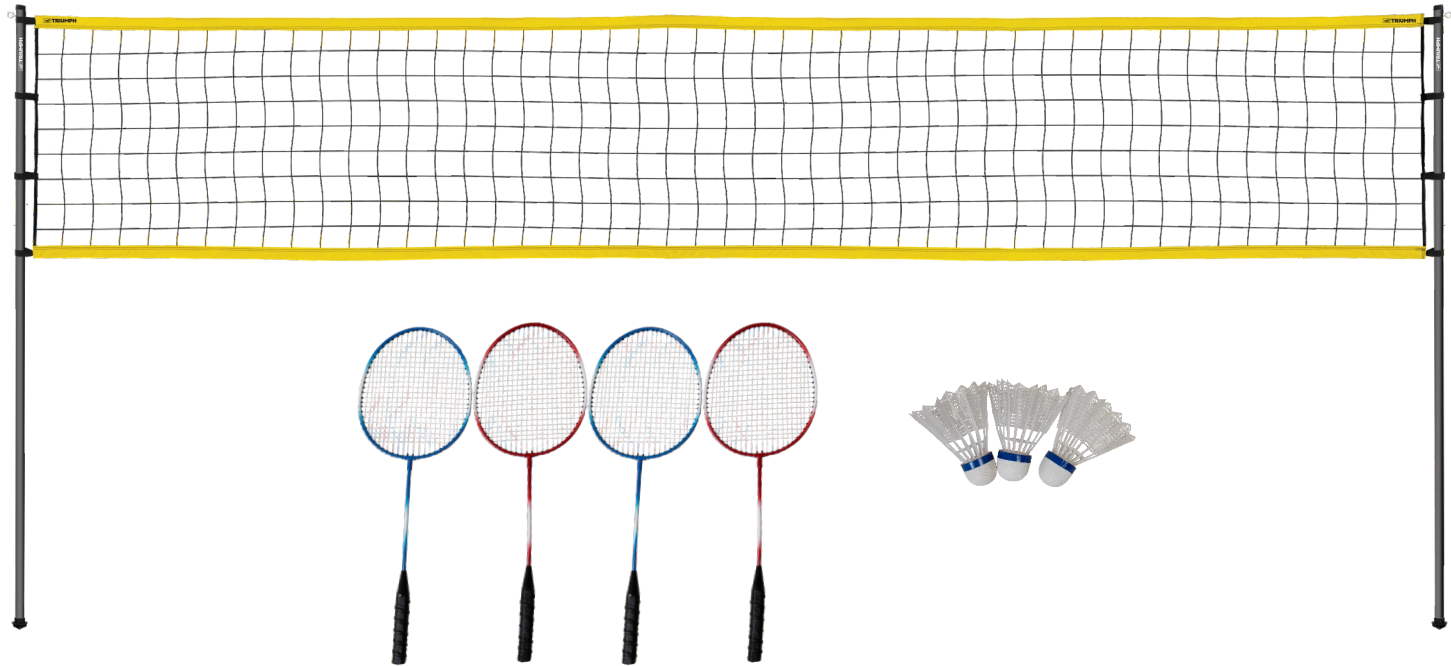




35-7435-3

COMPETITION BADMINTON SET

INSTRUCTION MANUAL



PLEASE KEEP THIS INSTRUCTION MANUAL FOR FUTURE REFERENCE

If you have any concerns with your product please visit our website www.escaladesports.com for fastest service. Please have a copy of your receipt of purchase. For any technical support or warranty issues please contact Escalade Sports at 1-800-467-1421 or e-mail us at customerservice@escaladesports.com

CPSIA#2-35-7435-3-

-YS

Limited 90-Day Escalade Sports Warranty

All Escalade Sports games have a limited 90-day from date of purchase warranty. This warrants the retail purchaser for any Escalade Sports game purchased to be free from any defect in materials and construction for 90 days from the date of purchase. The only exceptions to the warranty include main frames, tabletops, playing surfaces, batteries or tools. Damaged main frames, tabletops, playing surfaces need to be returned to the store as we are unable to replace these parts. Normal play wear and usage is not covered under the warranty, nor is wear or damage due to improper use of the Escalade Sports game. This will void any and all Escalade Sports warranties.

A PURCHASE RECEIPT (or other proof of purchase date) will be required before any warranty service is initiated. All requests for warranty service can be submitted by email, in writing or by contacting our Customer Service Department at: 1-800-467-1421 or email us at customerservice@escaladesports.com

IMPORTANT NOTICE! Please contact us before returning the product to the store.

Warnings



Not for use by children without adult supervision. This is not a child's toy. Adult supervision is required for children playing this game. Please read instructions carefully.

Be sure to check out all the exciting games Escalade Sports has to offer. Visit our web site at:

ESCALADESPORTS.COM



Bag Toss



Net Games



Lawn Games

ESCALADE[®]
S P O R T S

Escalade Sports

Physical Location:

817 Maxwell Ave.

Evansville, IN 47711

Mailing Address:

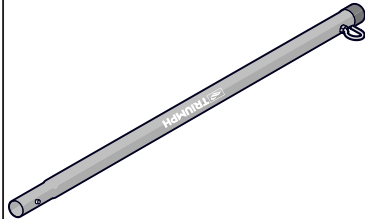
(Correspondence Only)

PO Box 889

Evansville, IN 47706

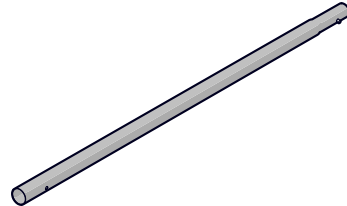
Parts List

1 Top Tube- With Metal Hook



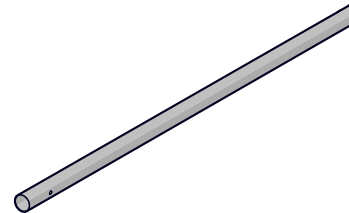
Qty. 2

2 Middle Tube



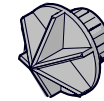
Qty. 2

3 Bottom Tube



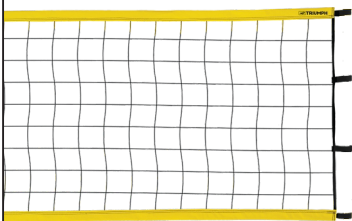
Qty. 2

4 Bottom Tube Cap



Qty. 2

5 Net



Qty. 1

6 Birdie



Qty. 3

7 Badminton Racket



Qty. 2 Red
Qty. 2 Blue

8 Carry Bag



Qty. 1

9 Boundary Lines & Ground Stakes



Qty. 1

10 Guide Rope



Qty. 2

11 Guide Rope Anchors



Qty. 4

Tube Assembly - First Section

Before assembly make sure you have an area of at least 20 feet wide to assemble the game.

NOTE: When connecting the tubes make sure to push until the spring lock engages in to the hole of the next tube.

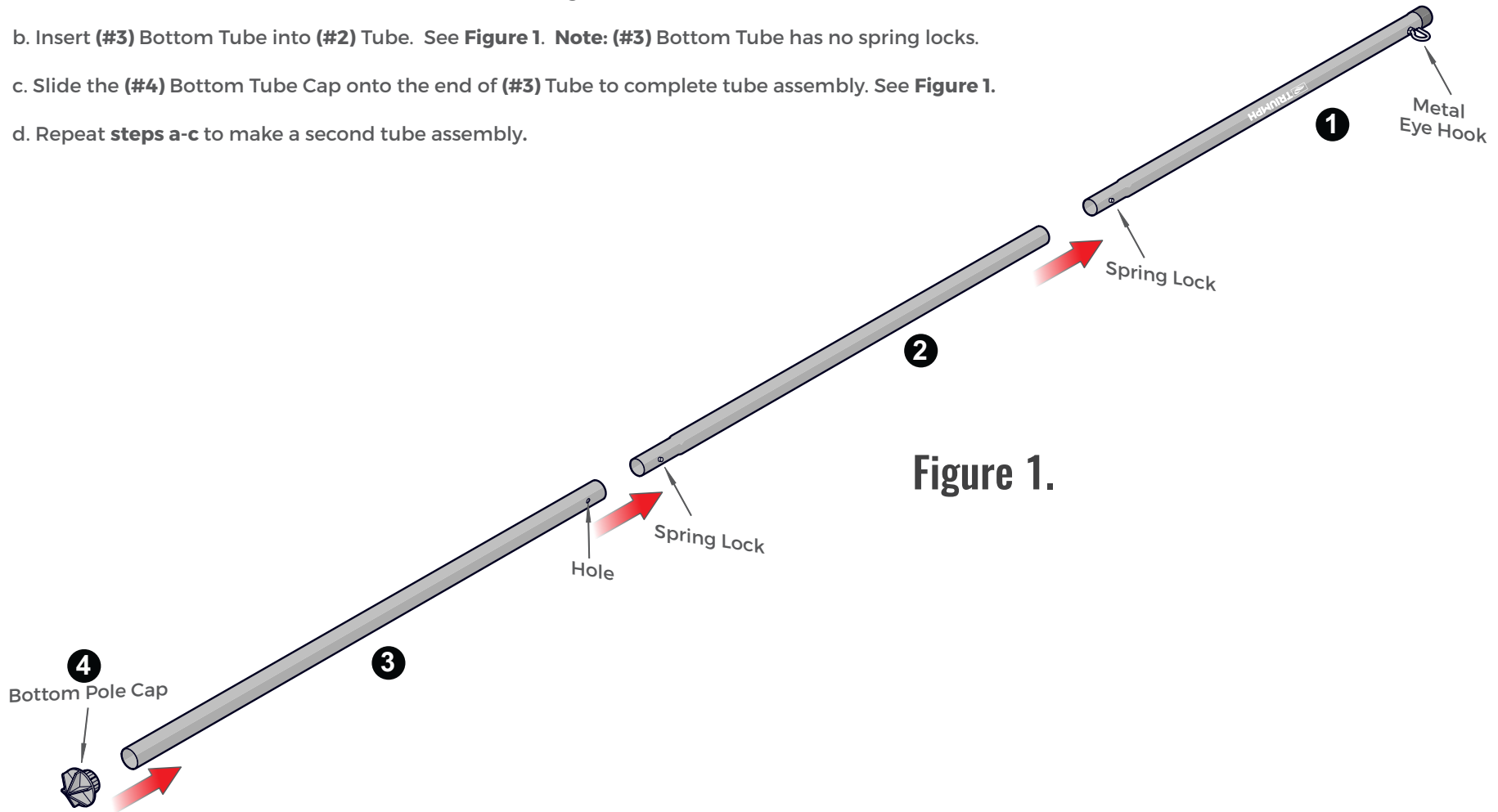
1. Take all components out of the case and sort them. All tubes are labeled.

a. Locate a **(#1)** Tube and insert a **(#2)** Middle Tube. See **Figure 1**.

b. Insert **(#3)** Bottom Tube into **(#2)** Tube. See **Figure 1**. **Note:** **(#3)** Bottom Tube has no spring locks.

c. Slide the **(#4)** Bottom Tube Cap onto the end of **(#3)** Tube to complete tube assembly. See **Figure 1**.

d. Repeat **steps a-c** to make a second tube assembly.



Tube Assembly - Second Section

2. Slide both tube assemblies into each net straps on the end of each net as shown on **Figure 2**.

Note: Make sure to place top strap above the metal eye hook. See **Detail A**.

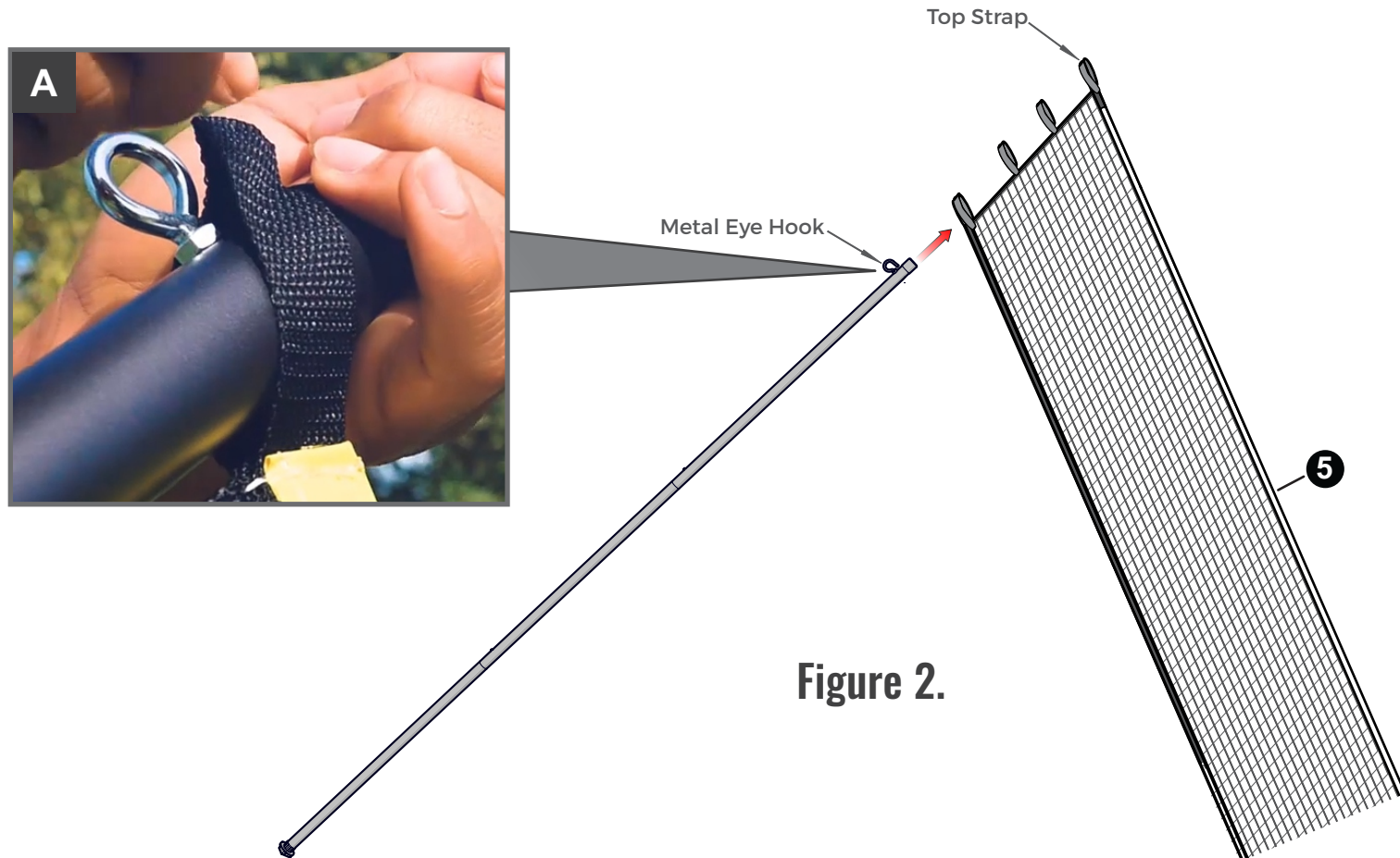


Figure 2.

Net Setup - First Section

3. Stand up net poles to form the net. See **Figure 3**.
4. Locate two (#10) Guide Ropes & four (#11) Anchors shown in **Detail B**. Place one (#10) Guide Rope & one (#11) Anchor on the grass next to each outer pole assembly.

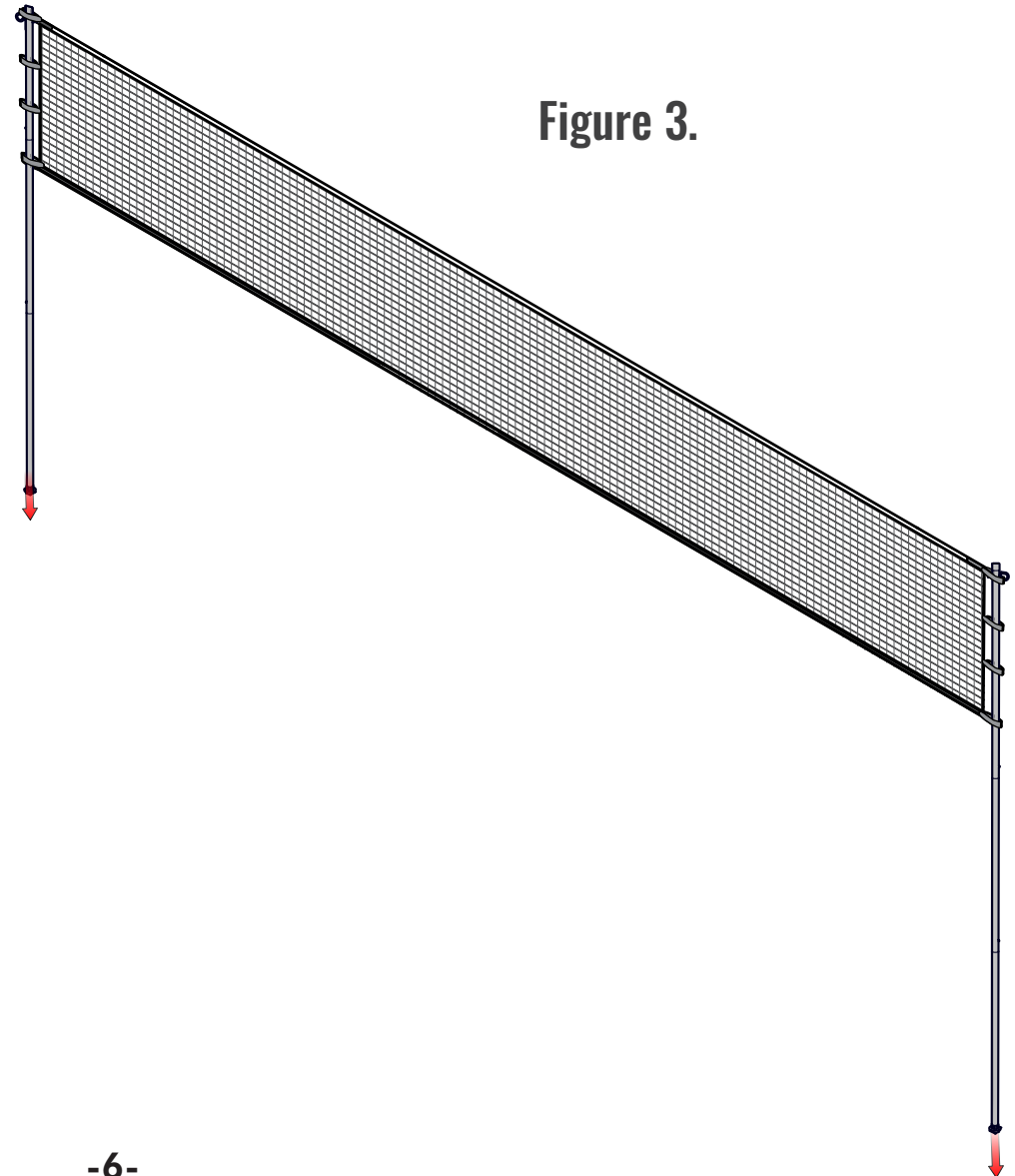
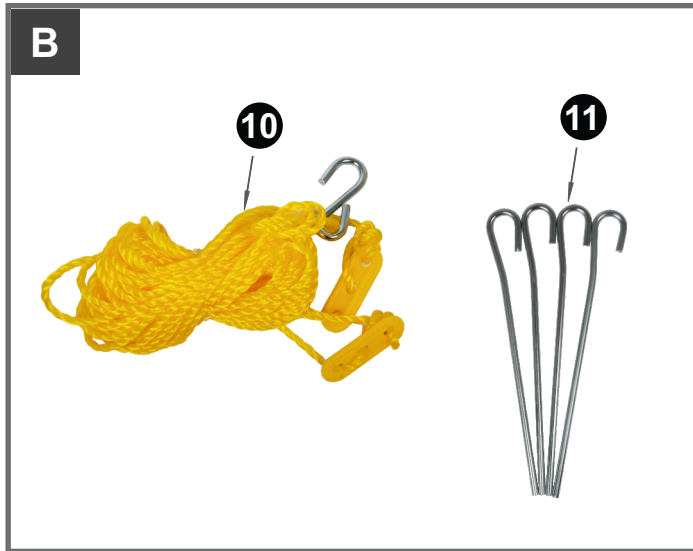
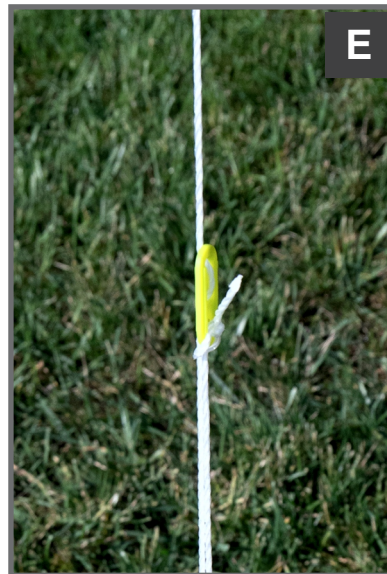
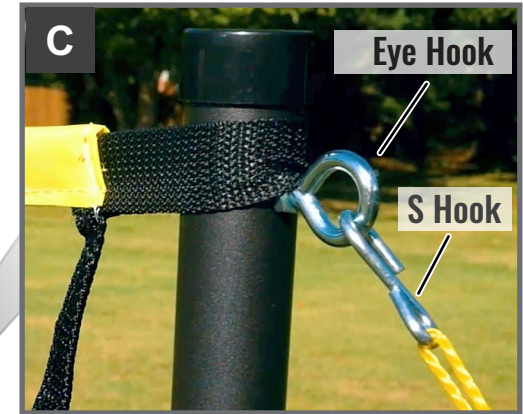


Figure 3.

Net Setup - Second Section

Figure 4.

5. Place the S hook at the end of the **(#10)** Guide Rope on the eye hook located on the pole. See **Detail C**.
6. Stake the metal anchor at a **45 degree** angle as shown in **Detail D**.
7. Adjust the plastic tension adjuster until string is taut. See **Detail E**.
8. Repeat **steps 5-7** for the other side.



10

11

Boundary Setup

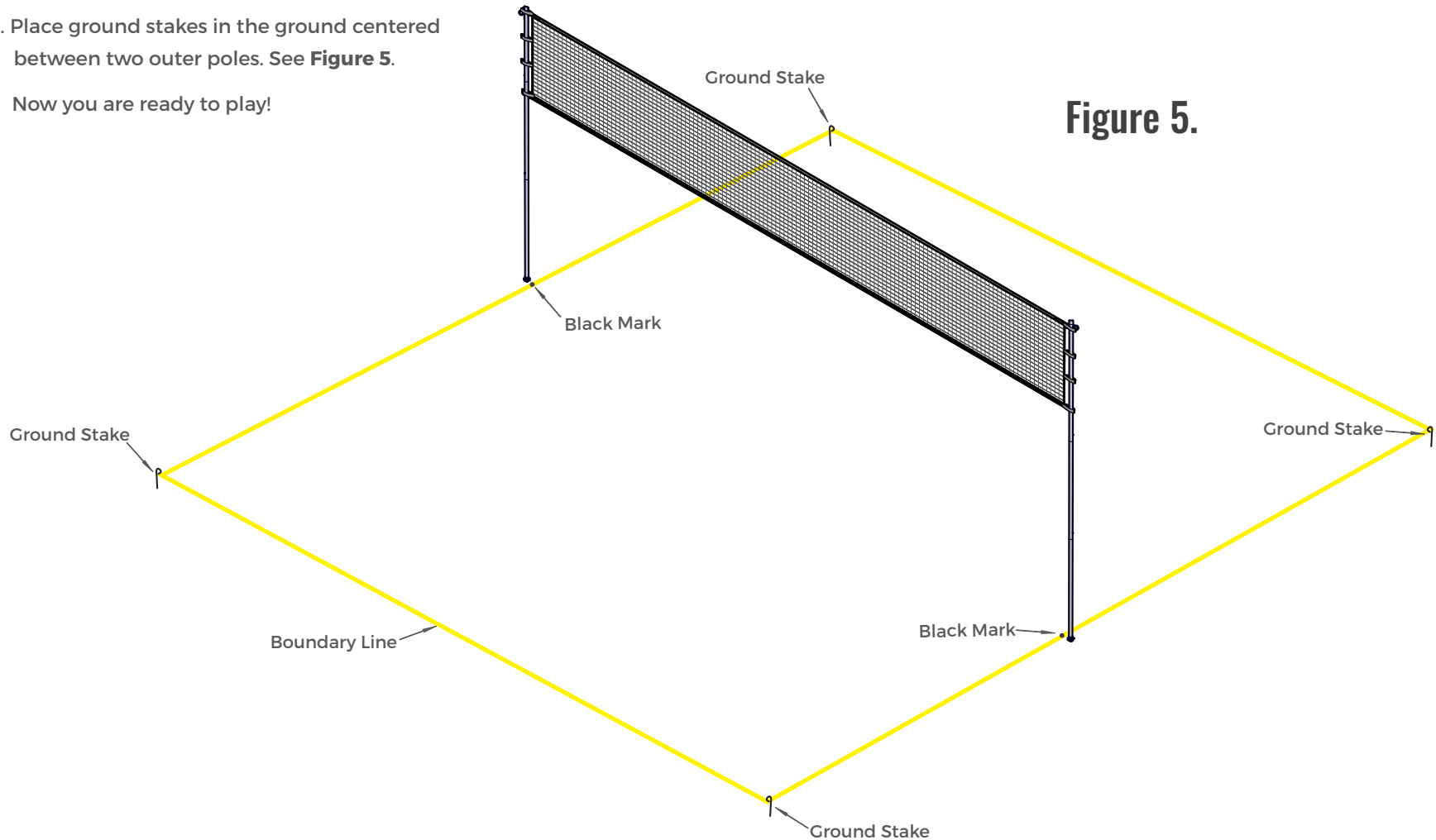
9. Locate (#9) Boundary Line & Ground Stakes.

10. Locate the black marks on the boundary line and place on the inside of the poles. See **Figure 5**.

11. Place ground stakes in the ground centered between two outer poles. See **Figure 5**.

Now you are ready to play!

NOTE: Guide ropes not shown for clarity.



Game Rules

Court Size

The length and width however can be increased or decreased proportionately depending on the area available.

Net

The net shall be stretched across the center of the court dividing it in half. The net height with poles fully extended is at the popular height of 5 feet.

Player

In doubles the game is played by two players per side. In singles the game is played by one player per side.

Service

The team winning the toss of the coin shall have the option of serving first, receiving the serve or choosing the court end. The side that serves first has only one serve to start the game. After the game begins each team gets two serves.

Service Rotation

The team which serves first must serve from their right half court diagonally opposite to their opponents right half court.

In Doubles: The serve must alternate from the right half court to left half court after each serve, so no player on the opposing team receives two consecutive serves. Teammates must serve consecutively.

In Singles: The players serve from the right half court when their score is “0” or an even number of points. Service is delivered from left half court on odd number points. If the team serving makes a fault, one serve is lost. If the team receiving the serve makes a fault, the team serving gets a point and continues the serve. The serve must alternate from right and left half courts after each serve as stated before.

Game Rules - Continued

The Game

The game can be played to 15 or 21 points. The best two out of three games wins the match. Teams shall change court ends after each game.

Faults

- If the birdie is served overhand. The birdie must be struck at a point not higher than the servers waist.
- If in serving, the birdie falls into the wrong service court or falls short of the service line or beyond the long service line or outside the side boundary lines.
- If the server or person receiving the service does not serve from within their right or left half court, whichever the case may be.
- If the server or player intentionally distracts, balks or obstructs his opponent.
- If the server in attempting to serve, misses the birdie.
- If during service or play the birdie falls outside the boundaries of the court, passes through or under the net or fails to pass over the net.
- If a player reaches over the net and hits the birdie on their opponents side of the court. However a player may hit the birdie on their side of the court and follow through on the swing over the net.
- If the birdie is hit twice in succession by the same player or the birdie is hit by a player and his teammate successively.

NOTE: It is not a fault if the birdie hits the net during service or play and goes over the net. If this occurs during the serve it is just re-served.