

SC 4 PRO

User Manual

VOICECADDIE S App Download



Android



iOS

www.voicecaddie.com



VOICE CADDIE

Perfect Spin

SC 4 PRO



1. Provides Complete Ball and Club Launch Data Metrics

• Device

- Carry / Total Distance (Carry+Run)
- Swing Speed
- Ball Speed
- Launch Direction
- Launch Angle
- Smash Factor
- Apex
- Spin

• VOICECADDIE S(APP)

- Side Spin
- Spin Axis
- Back Spin
- Shot Type

2. Personalized Golf Launch Monitor

VOICECADDIE S(APP)

- Provides real-time 3D driving range for more accurate and realistic practice
- Connect with the App for High Level Statistics Analyses and Platforms
- Distance Voice Output
- Distance Calibration by Atmospheric Pressure
- Adjustable Loft Angles
- Target Mode for Distance Challenges and Practice

Package Contents

- SC4 PRO, Remote Control, USB Cable, User Guide

* **Optional Accessories** : Alignment Stand for SC4 PRO and Pouch are sold separately.

Product Display and Aspects (Front Side)

* Remove the LCD protective film on the front side prior to initial use



1. Display



2. LED Indicators

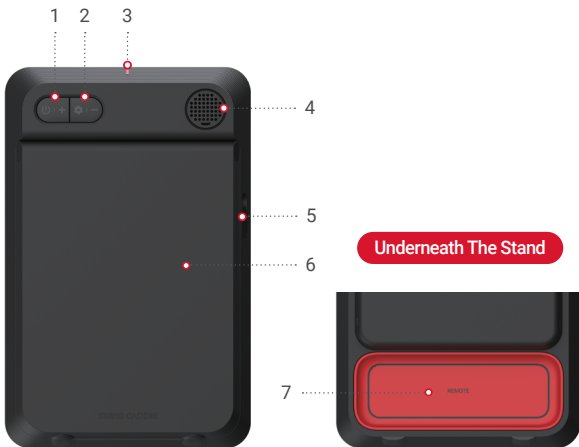
| Device in Use

LED Status	Status Description
Green	Ready
OFF	Sleep Mode
Flashing Blue	Bluetooth in Pairing Mode
Red	Unsuccessful Bluetooth Connection
Blue	Successful Bluetooth Connection
Flashing Red	Deleting Previous Shot Data
	Low Battery Warning
Flashing Green	Firmware is Updating
	Uploading Shot Data to the App

| Charging

LED Status	Meaning
Red	Battery is Charging
Green	Fully Charged

Product Aspects (Back Side)



Device Buttons and Output

- 1. Power/+ :** Device turned on / off by pressing the [Power/+] button for 2 seconds. Press the [Power/+] button briefly to increase volume.
- 2. Settings/- :** Change the setting by pressing the [Settings/-] button for 2 seconds. Press the [Settings/-] button briefly to decrease volume.
- 3. Alignment Line(Red Line) :** Reference marker (Red Line) to aid ball and SC4 Pro Alignment
- 4. Speaker :** Shot data voice output
- 5. USB Port & Cap :** Connect to a charger or PC to recharge and update.
- 6. Stand :** Open stand fully and adjust for proper positioning (A slight notch at center bottom for ease of opening)
- 7. Remote Control :** Magnetic design for convenient storage. (To access, push and slide out)

Remote Control

Function/
Selection
Buttons

Club
Selection
Buttons



Club Selection (Via Remote)

- DRIVER : W1(DRIVER)
- FAIRWAY WOOD : - W3 - W4 - W5 - W6 - W7 -
- UTILITY : - U3 - U4 - U5 - U6 - U7 -
- IRON : - I3 - I4 - I5 - I6 - I7 - I8 - I9 -
- WEDGE : - PW - GW - SW - LW -

Club Selection (App Connected)

- Club order may be changed in the 'My Bag' section of the App
- When registering three 7-irons in 'My Bag', the club order will change to 13 - 14 - 15 - 16 - 17 - 17 - 17 - 18 - 19

	Function	App Not Connected	App Connected	Note
CHANGE CLUB ORDER	Change Club Order	Y	Y	When connected to the app, the club order can be changed according to the 'My Bag' settings
VOLUME	Adjust the device volume (5 levels)	Y	Y	
MODE	Practice/Target/Swing Speed	Y	N	Practice/Target/Swing Speed (Available only when connected to the app)
UNIT	Change Unit	Y	N	
LANGUAGE	Change the voice guidance language. (ENG/KOR/JPN)	Y	N	
LOFT	Change the loft angle for each club	Y	N	
TARGET	In Target Mode, set the target distance (Carry)	Y	N	
TOTAL/CARRY	Set the distance type (Total/Carry)	Y	N	The total can only be checked in the app when connected.

Basic Usage of Device Buttons

Button	One Click	Press(2 seconds)	Press(6 seconds)
Power / +	Increase Volume	Power(On/Off)	Reset
Settings / -	Decrease Volume	Club Selection - Mode Selection - Set Target Distance	Shot Count Reset

Club Selection

- **SC4 PRO Unit** : Press [Settings] button for 2 seconds to select club.
When selected club is flashing, select club with [+/-] buttons
[↔ W1(DRIVER) ↔ W3 ↔ W4 ↔ W5 ↔ W6 ↔ W7 ↔ U3 ↔ U4 ↔ U5 ↔ U6
↔ U7 ↔ I3 ↔ I4 ↔ I5 ↔ I6 ↔ I7 ↔ I8 ↔ I9 ↔ PW ↔ GW ↔ SW ↔ LW ↔]
- **Remote Control** : Select club (press button and scroll until reaching desired club)

Mode Selection

- **SC4 PRO Unit** : Press [Settings] button twice for 2 seconds to select mode. When flashing, toggle mode with [+/-] buttons
[Practice ↔ Target ↔ Swing Speed]
- **Remote Control** : Press [Mode] button to toggle between modes

Set Target Distance

- **SC4 PRO Unit** : In target mode, press [Settings] button 3 times for 2 seconds to set target distance. When flashing, set target distance with [+/-] buttons
[Target Distance Range : 15 yards to 195 yards]
- **Remote Control** : Press Target [+/-] button to set

* When connected to the app, only basic functions such as power on/off, force quit, and volume control are enabled.

Data Accuracy

- Ball Speed : +/- 1 mph
- Club Speed : +/- 3 mph

- Launch Angle : +/- 1°
- Launch Direction : +/- 1°

Shot data effective measurement range

	Effective Measurement Range
Ball Data	<ul style="list-style-type: none">- W1: 54 yds <- Wood/Util : 49 yds <- Iron3 - Iron7 : 44 yds <- Iron8 : 38 yds <- Iron9 : 16 yds <
Swing Speed	22 - 156 mph
Ball Speed	22 - 208 mph
Launch Angle	10 - 50°
Launch Direction	L 10°/ R 10°
Carry	15 - 370 yds
Apex	10 - 109 ft

Practice Mode

- Displays immediate feedback: Carry/Total Distance, Launch Direction, Swing Speed, Ball Speed, Smash Factor, Launch Angle, Apex, Spin
- Smash Factor Data will not be displayed if below 1.0
- Spin Data (Wedges): Displayed when using PW. Not displayed when using GW, SW, and LW.

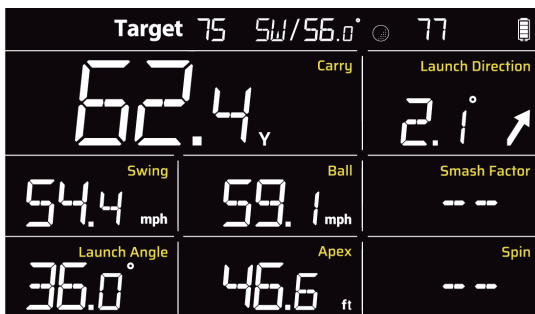


Detailed Data Description (Based on Sample Above)

- | | |
|----------------------------------|--------------------------|
| - Club : W1(Driver) | - Swing Speed : 95.5 mph |
| - Loft Angle : 10.5° | - Ball Speed : 142.5 mph |
| - Total Shots : 55 | - Smash Factor : 1.49 |
| - Shot Data EQ : On | - Launch Angle : 12.1° |
| - Bluetooth : On | - Apex : 72.8 ft |
| - Carry : 231.7 yards | - Spin : 2580 rpm |
| - Launch Direction : 2.3°(Right) | |

Target Mode

- Set Target Distance (15 - 195 yards)
- **SC4 Unit** : In Target Mode, press [Settings] button 3 times.
Set distance with [+/-] buttons
- **Remote Control** : Set with [+/-] of [Target] button
- (Note) Smash Factor is not displayed in Target Mode
- (Note) Spin data is not displayed when using GW, SW, and LW

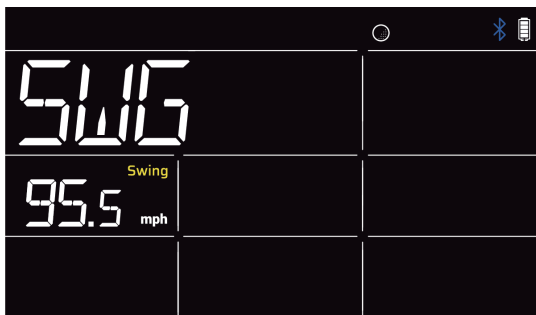


Detailed Data Description (Based on Sample Above)

- Target Distance : 75 yards
- Club : SW
- Loft Angle : 56.0°
- Total Shots : 77
- Shot Data EQ : OFF
- Bluetooth : OFF
- Carry : 62.4 yards
- Launch Direction : 2.1°(Right)
- Swing Speed : 54.4 mph
- Ball Speed : 59.1 mph
- Launch Angle : 36.0°
- Apex : 46.6 ft

Swing Speed Practice / Training Mode

- Swing Speed measured without ball strike



Positioning and Alignment

1. Unfold the stand and place on the ground 5ft behind ball and/or tee
2. Proper Angle Position: Adjust the stand of the product until 0 shows on the display
3. Alignment/Positioning: Align the ball/tee and the red alignment line on top of the unit (Incorrect alignment can reduce the accuracy of data)

Proper Angle Placement

- Establish the proper angle placement by adjusting the stand

[Target value: 0]

(Correct angle will optimize shot data accuracy)



Stand Adjustment -  +

Adjust Alignment Line



5 feet



* The SC4 PRO exclusive Alignment Stand for more accurate mounting is available for purchase.

Alignment Tips

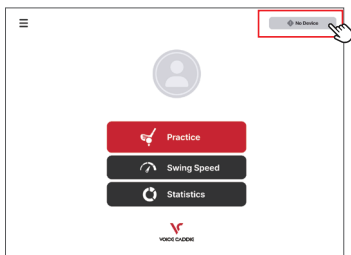
- The SC4 PRO measures both the ball and club head from swing to impact to ball flight to provide precise measurements
- Proper placement of the unit is necessary to provide the most accurate readings, which entails placing the unit :
 - Level to the mat or hitting surface
 - 5 Feet / 1.5 Meters behind the ball
 - Direct alignment from the center of the unit (as referenced by the engraved red line on top of the unit) to the center of the ball
- Note that the placement of the unit may need to be adjusted, depending on the club being used (i.e. Driver on a tee versus a short iron)
 - Therefore, Some Tips for Proper Alignment:
 - Use of the Swing Caddie Alignment Plate
 - (Included with the Swing Caddie SC4 PRO Case, Sold Separately)
- Place the unit on the plate, directly on the referenced lines
 - Use of Alignment Sticks, Driver, or other Straight Object for Reference
- Utilize a straight object placed behind the ball to the SC4 PRO unit. Match the red center line engraved on top of the SC4 PRO unit to the center of the ball

VOCIECADDIE S(App) Key Features

- Real-Time 3D Driving range
- Shot list
- Swing speed Mode
- My Bag Customization
- Data and Analysis

Connect App(iPhone/iPad) *Android will be supported later

1. Install and run the [VOICECADDIE S] app from the smartphone app store.
2. Keep the smartphone close to the device.
3. Turn on the device.
4. Tap the button on the upper right corner of the main screen after logging in.



5. Tap the device to be connected.

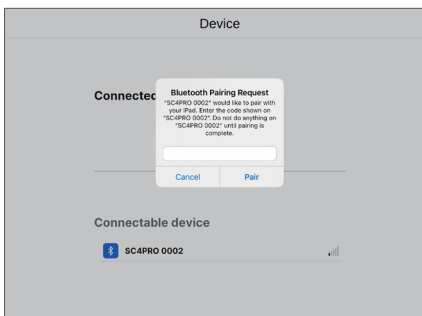


Connect App (iPhone/iPad)

6. Tap the upper right corner of the main screen after logging in (PIN: 972354).



7. Enter the PIN in the app and tap the confirm button.



8. Bluetooth connection completed.

※ Once initial connection is completed, the device will automatically reconnect when the App is opened.

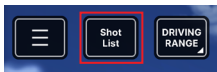
Real-Time 3D Driving Range

- Available when accessing the Main Menu > Practice menu
- Real-time shot practice available for each club
- Real-time shot data provided
- Background, camera angle, and replay function available
- Shot list displayed

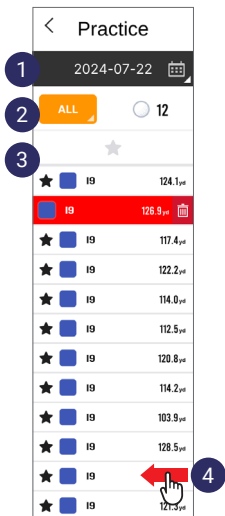


Shot List

- Tap the shot list button located at the top of the screen



- ① Choose the date
- ② Select the club to display
- ③ Show only bookmarked shots
- ④ Swipe left to delete shots



Screen Selection

- Select the screen you want to view from the practice menu.
- Nine practice screens are available, with the potential for more to be added.

1. Tap the menu button at the top left of the practice screen.



2. Choose the desired menu from the popup.



Split View

- You may switch between full-screen and split-screen modes.
- You may configure up to 9 screens as per your preference.
- To switch from full screen to split screen, tap the zoom-out button located in the upper right corner.



- In split screen mode, tap the expand button in the upper right corner to switch back to full screen.

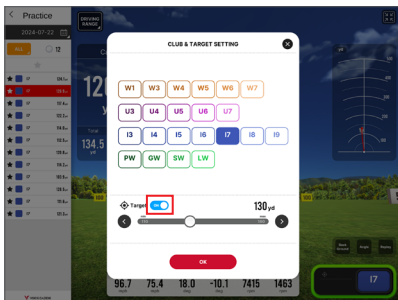


Club Change and Target Mode

- Tap the club button in the bottom right corner of the practice menu.

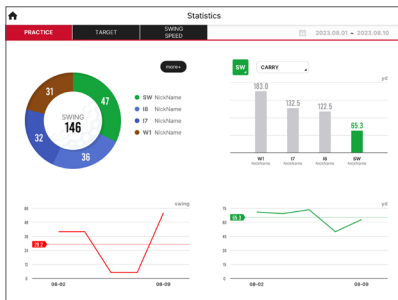


- Select the desired club on the club selection screen.
- Switch to target mode when selecting target ON.
(this feature is only available for irons and wedges)



Statistics

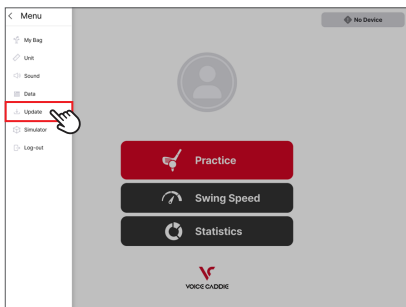
- Available under Main Menu > Statistics
- Provides statistical data
- By period/club
- With trend graphs and data tables.



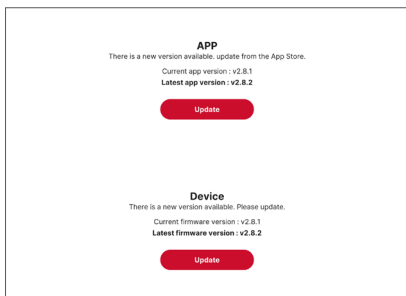
Firmware Update

- Using the app

1. Connect SC4 PRO via Bluetooth.
2. Go to the Main Menu and select the Update Tab.



3. The update button will activate if there is a firmware update available.
4. Tap the Update button.



5. Wait for the update to complete.

Firmware Update

Using PC

1. Download the VC Manager from the Voice Caddie website(Windows, Mac OS)
2. Run the VC Manager
3. Register for a Voice Caddie account or log in if already a member
4. Turn off the SC4 PRO and connect to a PC via USB
5. Update in Progress
6. Update Complete

* The SC4 PRO connects to a PC only when the power is turned off.

- USB Connect



- Downloading the update



- Applying the update



Specifications

Sensor	Frequency	K Band 24 GHz
	Method	Doppler Radar Sensor
Power	Battery	Lithium-ion Rechargeable Battery 7,500 mAh
	Charging Time	Approx. 6 hours (Full Charge)
	Usage Time	Approx. 10 hours (Dependent Upon Usage Conditions)
Size	Dimension	4.9" (W) x 7.6" (H) x 1.1" (D)
	Weight	Approx. 20.8 oz (Including Battery and Remote Control)
	Operating Temperature	32°F - 122°F
Range	Positioning	5 feet behind the ball at the same level
	Measuring Range	15 - 370 Yards (Carry)

Recommended charger

1) Charger Output : 5V 2A

2) Charging Time (Full Charge, When Fully Discharged) : Approx. 6 hours

3) Notes / Caution

1) Not intended to charge via PC connection

2) Utilizing a charger that does not meet the recommended output may affect the charging time

Warranty

Voice Caddie warrants this hardware product against defects in materials and workmanship for a period of one year from the date of original retail purchase. If a defect is deemed to exist, at its discretion, Voice Caddie could (1) Repair the product at no charge or (2) Exchange the product with a product that is new or refurbished. If Voice Caddie initially approves a return, it shall have no obligation to repair, replace or refund until the defective product is received, is evaluated, and determined to fall under the guidelines of repair/replacement. Warranty may be voided if: (1) Damage is caused by accident, abuse, misuse, misapplication, or non-approved Voice Caddie Products; (2) Damage caused by service performed by an entity or person who is not a Voice Caddie Authorized Service Provider; or (3) Product or part(s) has been modified without the written permission of Voice Caddie

Product Name	VOICECADDIE SC4 PRO
Serial No.	
Purchase Date	
Dealer	
Dealer Contact	
Buyer's Name and Contact	
Warranty Period	One Year from Original Purchase Date (Proof of Purchase Required)

Notes

- The range of the remote control may be reduced in direct sunlight conditions
- For optimal shot data readings, it is recommended to place the unit and ball be placed at the same level, and properly aligned

Caution

This device complies with Part 15 of the FCC Rules. Operation is subject to the following two conditions: (1) this device may not cause harmful interference, and (2) this device must accept any interference received, including interference that may cause undesired operation.

This equipment has been tested and found to comply with the limits for a Class A digital device, pursuant to part 15 of the FCC Rules.

These limits are designed to provide reasonable protection against harmful interference when the equipment is operated in a commercial environment. This equipment generates, uses, and can radiate radio frequency energy and, if not installed and used in accordance with the instruction manual, may cause harmful interference to radio communications. Operation of this equipment in a residential area is likely to cause harmful interference in which case the user will be required to correct the interference at his own expense.

Any changes or modifications not expressly approved by the party responsible for compliance could void the user's authority to operate this equipment.

This device must not be co-located or operating in conjunction with any other antenna of transmitter.

The antenna(s) must be installed such that a minimum separation distance of at least 20cm is maintained between the radiator (antenna) and all persons at all times.

FAQ

1. How far back do I place SC4 PRO behind the ball?

Approximately 5 feet.

2. How do I align SC4 PRO behind the ball to get optimal readings?

Align SC4 so the red line on top of the unit is aligned with the ball.

3. What if I feel I am receiving inaccurate data?

Make sure the correct unit of measurement is selected (Yards / Meters), and Distance Type (Carry vs Total).

4. Can SC4 PRO be used indoors with a net?

Yes. If a net is used, make sure you have at least 10 feet in front of the ball to the net.

5. What if I am hitting off the grass mat at the range or at home?

Make sure the ball and your Swing Caddie are at the same level.
Variance in level may affect the accuracy of data readings.

6. Can I use SC4 PRO with practice or foam golf balls?

The unit is not designed to assess non-standard golf balls.

7. What if I feel I am not getting proper distance data?

First confirmed that the distance measurement is in desired mode (Carry or Total).
Note that factors of roll and slope, high wind, and other prospective environmental conditions are not accounted for and can variance in calculated data.