



Welcome to **Flora**

Let's save your
plants!





Flora takes just 3 easy steps to setup

Watch the easy-to-follow video with
this QR code:

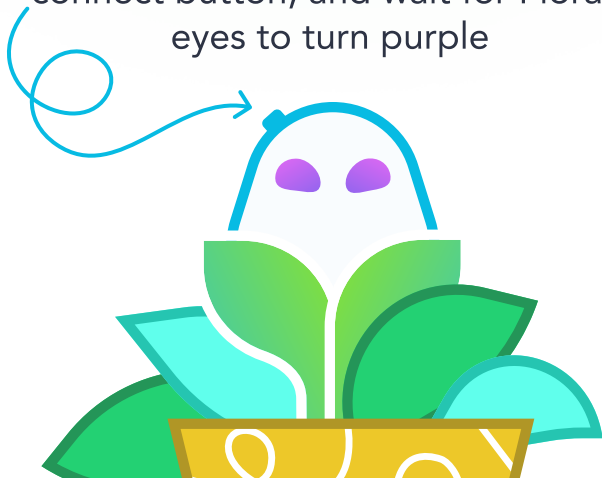




...Or, you can follow our 3-step process here:

Step 1: Press

Turn on your sensor by holding the connect button, and wait for Flora's eyes to turn purple





Step 2: Plant

Plant your Flora Pod into the soil of your plant, about 3-4 inches firmly into the soil. Avoid placing it too close to the plant and damaging its roots!





Step 3: Pair

Pair your sensor after downloading our app, and then follow the steps in the app for an easy connection!

Download our app here:





Support

Questions? Concerns? Feedback?
Let us know!





Terms, Conditions, and Warranty

Access our terms, conditions, and
warranty info here!





Earn Rewards

Get \$10 off your next Flora Pod purchase by sharing the love with your friends!





Refunds and Returns

Access our refunds, and returns info
here!





FLORA