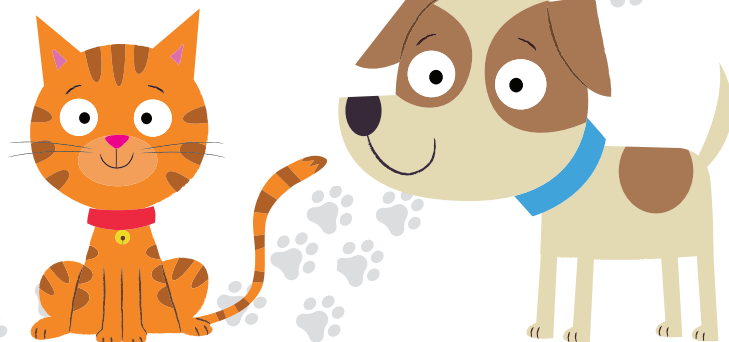




# Model CP300 Pet Grooming kit



**Care and Use Instructions**  
**Please retain these**

**FOR USE ON DOGS AND CATS ONLY**

Ewbank LLC

6801-D Northpark Boulevard, Charlotte, NC 28216 USA

**Email:** [enquiries@Carolina-Pets.com](mailto:enquiries@Carolina-Pets.com) **Telephone:** +1 704 827 9385

**Website:** [www.Carolina-Pets.com](http://www.Carolina-Pets.com)

Thank you for buying the Carolina Pet's GROOMING KIT, we hope you enjoy using it. Please read these instructions carefully before using your Grooming kit. Please retain these safety instructions for future reference.

Pack contents:	Part No.
1. GROOMING KIT MOTOR UNIT	EB1359
2. Hose	EB1360
3. Clipper with Stainless Steel blade	EB1361
Comb – 3mm	EB1362
Comb – 6mm	EB1363
Comb – 9mm	EB1364
Comb – 12mm	EB1365
Comb – 15mm	EB1366
Comb – 18mm	EB1367
4. Brush head	EB1368
a) Slicker brush	EB1369
b) Knot Buster	EB1370
c) Molting Comb	EB1371
5. Hair Removal Brush	EB1372
6. Long crevice tool	EB1373
7. Charging Cable – Type C – 5v	EB1374
8. Bottle of oil	EB1375
9. Small brush to clean Clippers	EB1376
10. Straight safety scissors	EB1380
11. Stainless steel comb	EB1381
12. Storage bag for accessories	EB1378
13. Dust Container	EB1393



Read the instruction manual before using the Grooming Kit and make sure that:

- The battery charger cable is in perfect condition.
- All packaging materials are removed from the product.

### Safety Instructions - CAUTION

- Never use the machine on WET fur or WET hair.
- Keep the plastic packing bags away from children (danger of suffocation).
- Do not expose the Grooming kit, battery or charger to extreme temperatures or moisture.
- Do not use in humid conditions – such as a steam filled bathroom.
- Store in a cool dry place.
- Only charge the Grooming Kit cutters with the correct USB-C cable.
- Do not attempt to remove the rechargeable battery from the Grooming kit cutters when charging.
- Disconnect the battery charger once the battery is completely charged (indicated by a green light on the battery charging unit).
- Never throw the rechargeable battery into open flames or burn it, always dispose of batteries in the correct manner.
- Ensure the Grooming kit is switched off at the on/off push button switch before emptying the container.
- Keep away from flammable and explosive environments.
- In order to protect the motor, ensure that the filter is correctly installed and that it is regularly emptied and cleaned before turning on the power.
- This Grooming kit is for domestic use only and should not be used outside if raining.
- Do not use the product on uneven surfaces.
- **DO NOT** use the machine for vacuuming liquids.
- This appliance should not be used, cleaned, or maintained by children under the age of 14 years. Persons with reduced physical, sensory, or mental capabilities or lack of experience and knowledge should only use, clean or maintain the product if they are adequately supervised and given instruction for the safe use and understanding of the hazards involved. Children must not play with the appliance.
- Ensure fingers, hair, jewellery, loose clothing etc. are kept away from any moving parts.
- To protect the Grooming Kit from overheating do not block the filter, Dust Container or Hose of the unit. The Grooming Kit has a built-in thermal protection unit which will shut down if over-heating occurs. If this happens you will need to unplug the unit and wait several minutes for the unit to cool.
- Do not use on burning or smoking objects such as cigarettes, matches or hot ash.
- Please only use the Grooming kit for indicated purposes.
- Unplug the machine after use.

### GROOMING KIT Product Overview

The CP300 GROOMING KIT is designed to enable you to replicate the same type of equipment that is used in a professional grooming salon, although not intended for professional use. The tools supplied are all precision instruments to ensure that you can safely keep your pet in top condition as and when you want to. Take your time to read the instructions or follow the videos on our website to ensure you get the best results. The more you use the kit, the better your results will become. Whether this is in between professional grooms, or as your grooming solution, the CP300 is the product for you.

## Using your CP300

**CAUTION – DO NOT USE THIS PRODUCT ON WET HAIR OR WET FUR**

**WE STRONGLY RECOMMEND THAT YOU DO NOT USE THIS PRODUCT ON YOUR PET UNTIL YOU HAVE READ THE RECOMMENDED STEPS FOR CLIPPING YOUR PET'S HAIR / FUR**

- 1) Place the main unit on the floor and unravel the power cord.
- 2) Remove the fur collector cannister to ensure that the filter has been correctly fitted and not moved in transit. To remove the cannister, grasp the handle and simply twist anti-clockwise with container towards you and this will release the cannister. You will be able to check the filter inside.
- 3) The filter should be tight in the aperture with the black foam inside the cannister and the white washable filter visible from the outside.
- 4) Refit the collector cannister by sliding the cannister onto the main body and then twisting it clockwise.
- 5) To fit the hose, find the smooth end, without any locating slots and push this in the hole at the front of the dust cannister as far as possible, with a slight twist clockwise to complete a snug fit. If the end of the hose is too small, then you need to turn the hose around and use the other end.
- 6) Select whichever tool you wish to use and slide it into place at the end of the hose by locating it onto the location tabs. There is no need to twist this.
- 7) To change tools simply pull the current tool out. Some may need a gentle tug to release.
- 8) Once you have connected the required tool then connect the power cord to a suitable power socket and make sure this is switched on.
- 9) The on/off button for the main unit is also a Variable Speed Control. Switch on by pressing this button down. The motor will start to operate. Select the level of suction that you require and then begin to use your new Grooming kit.
- 10) The variable speed can be changed at any time during operation, and it is advisable to select the lowest setting to start with, so that your furry friends get used to the noise. With the longer stretch hose, you do not need to groom very close to the power unit which will help your pet to get accustomed to the experience.
- 11) The 13 ft power cord enables you to move freely around your pet. The hose extends to at least 8 ft when fully pulled out.

**Caution:** As protection against overheating the unit, please do not block the Dust Collection Cannister, Filter or Hose.

## Variable Speed Control

One of the benefits of the CP300 is a variable speed control. Most other grooming kits available only have 2 or 3 speeds. With this product, you can choose exactly the speed you want, and your pet is comfortable with.



### 1. Electric Clipper

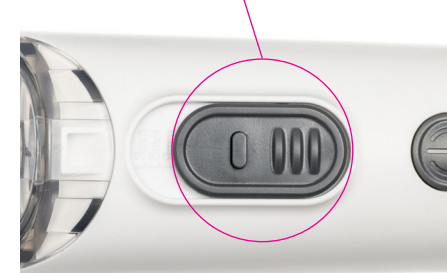
Before using the clipper, you will need to charge the battery with the USB-C cable that is supplied with the Grooming Kit. You need to insert the USB end into a converter plug or USB point and the other end into the clipper – just below the on/off switch.

The light just below the power input will show red and then turn green when fully charged.

Charging aperture      Light indicator



Blade adjuster



Choose a guard comb according to the hair length required (optional use)



USE THE SHORT COMB TO PROTECT THE CLIPPER BLADE WHEN STORED AFTER USE.

Micro hair length adjustment



**Slide Up** to decrease the hair length from  
1.9mm - 1.6mm  
1.3mm - 1.0mm



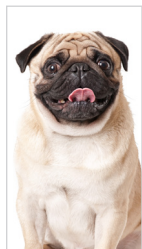
**Slide Down** to increase the hair length from  
1.0mm - 1.3mm  
1.6mm - 1.9mm

**YOU NEED TO PRESS THE "ON" BUTTON OF THE CLIPPERS FOR 1.5 SECS IN ORDER TO OPERATE.**

Select the comb, that is the correct size for the length of hair and style required. Slide this onto the top of the clipper, with the on/off button facing you and the blades of the comb facing away from you. Slide this down into place until it is locked in place. To remove simply push up on the base of the comb.

If you would like to practice before trying out on your furry friend, use faux fur fabric, to replicate a similar experience in cutting the hair/fur..

The electric clipper can be used either on its own or in connection with the main unit, which should ensure that most hair and fur is collected in the main grooming unit.



**3mm 1/8"**  
Limit comb size



**6mm 1/4"**  
Limit comb size



**9mm 3/8"**  
Limit comb size



**12mm 1/2"**  
Limit comb size



**15mm 5/8"**  
Limit comb size



**18mm 3/4"**  
Limit comb size

Pictures are for general guidance purposes only and not specific to the breed.

The combs determine the overall length required, whilst the adjustment on the clipper is only for minor adjustments. It is suggested that you start with the clipper set at 1.9mm.

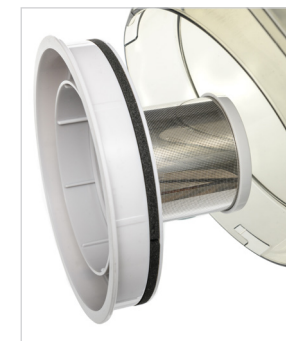
Once you have selected the cutting depth and the comb size and decided whether or not to connect the clipper to the main grooming unit, then you are ready to switch on and start your grooming. Simply press the on/off button, select the speed and off you go. There is a 1 ½ second delay on the clipper starting. This is a safety feature.

As you cut the hair, you will need to check regularly that the collection container has not become full, and need emptying. If this requires emptying, remove the fur collector cannister. To remove the cannister, first remove the hose then grasp the handle and simply twist anti-clockwise, and this will release the cannister.

Remove the filter by simply pulling it out, then remove the grey internal main filter holder, then brush off the outside of the stainless filter. This will also enable you to empty all contents. Then simply refit the items in reverse order, making sure each is centrally positioned to get a good fit. If the container does not easily fit back onto the main body, then you will need to check you have refitted the filters correctly.



Internal filter holder being removed



Filter removed



Filter back in place



## CLEANING THE CLIPPER – SHOULD ONLY BE UNDERTAKEN WHEN DETACHED FROM THE HOSE AND ALWAYS ENSURE THE CLIPPER IS TURNED OFF

- 1) Make sure the height adjuster slides correctly. Move adjuster to 1.9mm before removing or refitting blades. Remove any debris from the clippers by using the brush supplied or using the hose to blow the clipper.
- 2) To remove the blade, place a finger behind the blades and your thumb on the base of the blade and snap forwards. The blade simply pulls out – see photo.
- 3) Drop some lubricant (supplied) onto the blades from time to time – see photo.
- 4) To replace the blade simply locate the lug at the bottom of the blade, into the aperture in the clear plastic and simply snap back into place.
- 5) You can clean the body of the clipper by using a damp cloth. Do not submerge the clipper in water.
- 6) We recommend that when you store the clippers, you fit one of the combs as a guard so as to protect the blade from any damage. Replacement blades are available to purchase, these are regarded as consumables and not covered by warranty.
- 7) Replacement blades are available from Carolina Pets Product Code EB1388.



Removing blade for cleaning



Lift and pull out the blade



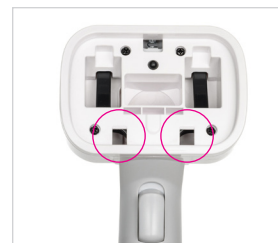
Adding lubricant onto the blades

## 2. Brush Holder

The brush holder is designed to use with 3 different heads. To change heads, simply push the button on the top of the brush holder, and the head pops out.

When replacing with a different head, make sure you insert the two lugs on the head pointing downwards to fit into the location in the brush holder, then clip into place.

The button on the front of the handle enables you to simply remove any hair that has blocked the brush. Press this button and the central head lifts, to enable you to easily remove the trapped hair, even when in use.

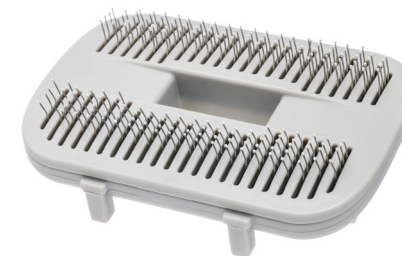


Locating lugs



Press here to change heads

Each of these heads are used in conjunction with the vacuum, which means you should have much less to clean up, as virtually all of this is collected in the fur container.



## 3. Slicker Brush

Connect the Slicker brush to the hose.

The brush has a series of specially designed tightly packed angled wire pins with nylon ball ends to go through the pet's coat and are designed to make it gentler on the skin. Use this on medium coated, long-coated, wire-coated and curly coated dogs to remove mats (and to prevent mats from forming) by removing loose hair.

To keep your pet's coat in perfect condition it is recommended you use this brush once a week. If your pet's hair reacts to static electricity, then use an anti-static spray mist to help prevent this.



Inserting brush head



Locating



Lifting brush head



#### 4. Knot Buster

The Knot Buster is perfect for removing knots from long, silky and curly coats. The blades cut through mats and with a rounded edge on the blades it is gentle on the skin.

The Knot Buster should be pulled slowly upwards through the coat and moved back and forth to gently detangle stubborn knots. The blades will have a cutting action on knotted hair.

This is designed to ensure your pet stays comfortable while being groomed.



#### 5. Molting Comb

- Removes loose hair from both the topcoat and undercoat
- Fine teeth whisk away fur
- Ideal molting tool

To use the Molting Comb, ensure the fur is free of knots and mats. Gently brush the hair in the direction of the fur growth. The teeth of this comb will slide into the undercoat, pulling away loose hairs.

To ensure your pet has an enjoyable grooming session, start gently. Pause or end the grooming session if your dog becomes agitated.

Begin grooming sessions when your dog is relaxed, if possible, after they have exercised. Use tools gently and avoid tugging on the skin or on knots or mats. Give your dog plenty of reassurance throughout the grooming session.

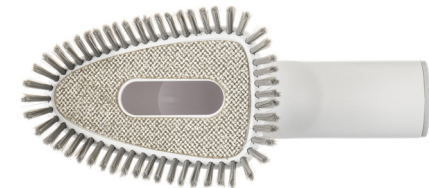
Pause or end the grooming session if your dog becomes agitated or shows signs of stress. Keep grooming sessions brief to begin with and increase the length of the sessions as your dog becomes used to grooming.



#### 6. Straight Scissors

Use your ring finger and your thumb and place them in the eye holes. Only the top of your fingers should be in the holes, don't press them too deeply into the finger holes because your hand will cramp up and you won't be able to scissor smoothly.

Just hold it at the tip of your fingers and move your thumb. Don't open the scissors too wide, just move evenly and slowly by moving your thumb. Try not to push the shears too much just gently work with them.



#### 7. Hair Removal Brush

This brush is designed to collect any pet hair or fur that has fallen onto furniture, bed or onto clothes.

Simply fit this to the hose and you can then start to clean. The bristles and hook and loop pad make sure that you collect the maximum hair possible.



#### 8. Long Crevice Tool

This tool is ideal for cleaning dirt or pet hair from sofa, carpets, keyboards and difficult to reach areas.

Simply fit to hose to use.

## 9. Cleaning Filters



HEPA and foam



Main filter unit

There are 2 pre-filters which will need to be checked regularly. These are located in the fur collector cannister. Having removed the hose, remove the cannister by grasping the handle and simply twisting anti-clockwise, and this will release the cannister first.

Remove the HEPA filter by simply pulling it out, the black foam filter is on the reverse. Then, remove the grey internal main filter holder. Empty all contents from the cannister.

The white HEPA filter and black foam filters are washable in warm soapy water and will need drying for at least 24 hours before re-fitting. Then, simply refit the items in reverse order, making sure each is centrally positioned to get a good fit. If the cannister does not easily fit back onto the main body, then you will need to check you have refitted the filters correctly.

If the main filter requires attention, then once the pre-filters have been removed you will need to pull out the grey moulding containing the main filter. Grasp the centre of the grey moulding and pull it out, you may need to tug this a little.

Once cleaned simply re-assemble in reverse order, making sure all parts are fitted correctly.

Spare filters are available from Carolina Pets. Foam filter is part EB1385. HEPA Filter is part EB1386. Main Stainless Steel Filter is part EB1387.



## 10. Storage

Power Cord – this can be wound around the base of the unit for easy storage.

Included in the kit is a bag to hold all the accessories so these can be kept together.

We recommend that you keep all items stored in the original box received in order to keep all these together.

## Recommended Steps for Clipping Your Pet's Fur

### DOGS




## How Often Should I Trim My Dog's Hair?

Not all dogs need regular trimming. But for those who do, it is recommended that their hair is cut every four to eight weeks.

The dogs that need regular haircuts include breeds that have long hair, such as Poodles, Shih Tzus, Lhasa Apsos, as well as sporting breeds, such as Spaniels. Using a clipper to give the dog a haircut keeps them tidy and reduces the chances of long hair becoming tangled.

It is not recommended that dogs with thick, double coats, such as Pomeranians, Huskies, Chows and similar types, have their hair clipped. It is not unusual for normal hair growth patterns in these dogs to be disrupted if they are clipped, especially if the hair is

clipped short. This phenomenon is called “post clipping alopecia.” If you decide that learning how to trim your dog's hair is something, you want to try, then this kit is for you. If you look after your clippers, they should last a long time. Using guide combs is safer than using just a clipper blade because the comb keeps the blade away from the dog's skin. These can be used over the blade that comes with the clipper, allowing you to leave a longer coat where desired. We supply 6 different combs between 3mm and 18mm.

 **Step 1:** Give your dog a bath and dry them off completely. Clipping a clean, dry coat will give you the best results and be kinder to your grooming equipment.



**Step 2:** Brush your dog completely by using one of the hair removal brushes, and make sure you can get a dog comb through every bit of hair. Once that is done, you are ready to use your clippers and guide comb. If you cannot brush the tangles out and your pet is very matted, even after using the Knot Buster de-matting head, we suggest you have your pet professionally groomed to remove the tangles this time, then have a regular, frequent schedule of home grooming. Clipping a matted coat is a skill best left to someone with experience, because the possibility of injuring your dog increases dramatically.



**Step 3:** Find a place to work where your pet can be secured, and you are both comfortable. Keep in mind that dogs are moving targets and grooming tools are sharp, so it's important to find a way to keep your pet as still as possible while you work. Something like an enrichment toy with spreadable food or treats on is ideal, some of which come with handy suction cups on the back to attach to tiles on the side of the bath.

If you are working with your dog on an elevated surface, make sure they cannot jump off and hurt themselves, and never leave them unattended. Something like a bathing tether might work if you have a smooth surface to secure it to. Some people may find clipping their dog in a dry bathtub works, because it keeps the dog confined to a small space and cleaning up the cut hair is a breeze. But if you decide that grooming your pet at home is something you want to do regularly, investing in a grooming table will make your work much easier, and safer, too.

**Step 4:** Start with the 9mm comb and clip the pet's sanitary area. This means clipping long hair away from the rectum and away from the vulva or penis to prevent urine from gathering in long fur.

When clipping the hair, make sure to keep the blade flat against the body. If the blade is tilted so that the cutting edge meets skin, you may accidentally cause a cut or irritation. Use the shortest of the guide combs over your blade if it makes you nervous to use the clipper blade on these delicate areas.



The 9mm comb can also be used to trim the hair from the bottom of the paw pads. Painful mats can form between the large pad and the toes, so clipping this hair is a good idea. It also decreases the amount of dirt and moisture your dog will bring in after a trip outside.

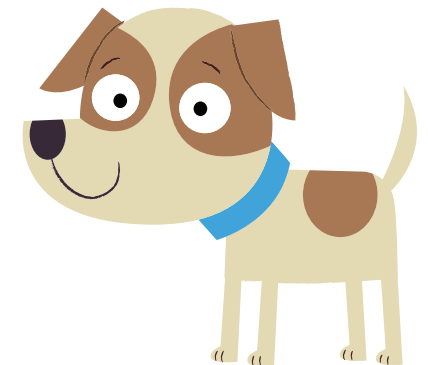
**Step 5:** Next, for the rest of your pet decide how long you want your pet's hair to be and choose a corresponding comb guide. They are clearly marked to show how much hair will remain after clipping but this can vary with coat texture and thickness of the dog's hair. Do a test clip on your dog's underbelly to see if you like the length before moving on to work on the back or sides. You can always choose a shorter guide, so start a little longer than you think to see how it looks on your dog's coat.

Most groomers clip with the lay of the coat. In other words, from the head toward the tail and from shoulders and hips toward the toes. Some pet owners find they get good results clipping against the lay of the coat. This will make the hair a little shorter than the length marked on the guide combs, but you may find you get more even results clipping this way.

**Step 6:** Once you have clipped your dog's hair to the desired length, brush and comb again to find any uneven spots, then re-clip those areas. You will need a set of scissors to trim up around your dog's head, feet and tail.

**Step 7:** Store your Grooming kit in a dry place, out of reach of your dog.

**Step 8:** To maintain your pet's coat at home, keeping the hair thoroughly brushed and combed at least once a week is crucially important. A tangle-free coat will keep your dog comfortable and will be easier and safer to groom with clippers every four to eight weeks or as needed.







## Pro Tips for Grooming Your Dog with Clippers

- If your dog is not accustomed to the sound and feel of the Grooming Kit, you can desensitize them by stroking them all over with just the clipper turned on. Once that is accepted, turn on the vacuum unit. Repeat the stroking all over while not actually clipping any hair. Most pets soon accept the strange new sensation and motor noise and then you can begin to cut the hair.
- Positive reinforcement training can be used here. Giving your pet their favourite treat whilst stroking them with the clippers turned on will encourage them that it is a positive thing and will help speed up the process. If the pet is fearful though, it is not advisable to give treats as it encourages this behaviour, instead it is advisable to switch off the unit, calm the pet down, reward, then try again.
- When working around sanitary areas and the “tuck up” area (the skin where the hind leg joins the body) be especially careful to avoid nicking the skin.
- When clipping your pet’s ears, hold the ear flat and always work from the centre, toward the edges. Canine ears have some little folds and flaps of skin that can easily become injured by the clipper blade.
- If you struggle with static when grooming then it is possible to purchase an antistatic conditioning spray for pets which will prevent static while you work, a light coat spray is all that is needed. Lightly spritz the coat while you use the brushes supplied.
- After clipping your dog, use the soft brush supplied to remove any hair residue from the blade. Then follow the above instructions to oil the blade before storing it. This is a crucial step in maintaining your clipper blade so it will be ready for action the next time you need to use it.

## CATS



## Should you groom your cat?

In a word, yes! Regular grooming allows you to spend quality time with your cat, as well as providing the opportunity to monitor their health. Grooming also removes dust, dead skin and loose hairs, prevents serious tangling and matting and can improve circulation.

Looking at the condition of your cat’s coat can be a good way of checking on their overall health and nutrition. Look for issues such as sore patches, wounds or matted fur, and if the condition of your cat’s coat changes, visit your vet for a check-up.

## How much time to spend grooming your cat?

This depends on your cat, but short, regular sessions are best. Use praise and treats to help your cat associate grooming with nice things. Some cats find grooming uncomfortable, so if you notice your cat twitching, swishing their tail, growling or hissing, end the session.

Many long-haired cats need grooming every day to prevent knots from forming, while short-haired cats generally do a good job of grooming themselves. However, grooming sessions at least once a week are still important to help keep their coat in a good condition.



## Grooming a long-haired cat

Use the Slicker brush, also in conjunction with a wide-toothed metal comb if required and follow the direction the hair grows in naturally. Include your cat's chest and abdomen, behind their ears, the backs of their legs and armpit area, where tangles tend to form.

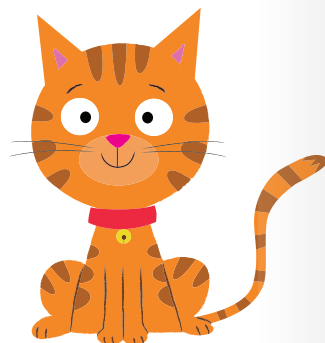
Tease any knots gently with the Knot Buster or comb to avoid damaging the skin. Keep grooming sessions short, especially while your cat gets used to them, and finish with praise and a reward.



## Choosing the best grooming brush for your cat

- **Knot Buster**, which should be used instead of attempting to cut matted fur with scissors, as there is the risk of cutting your cat's skin.
- **Fine Comb**, which can help distribute natural oils which can help the condition of your cat's fur for shorter haired cats.
- **Slicker Brush**, which is good for pulling out dead hair and breaking down mats in long-haired cats.

You can also buy grooming mitts and rubber brushes, which are useful for removing the dead hair from shorter-coated breeds.



## Troubleshooting

Recharge – during operation, if the clippers stop operating, it indicates that the battery is exhausted and needs recharging. Follow charging instructions as above.

Problem	Cause	Solutions
Clippers do not start <i>Remember to hold down switch for 1.5 seconds to start</i>	1. Switch is off 2. Battery is low	1. Turn switch on 2. Recharge immediately
Motor running but no vacuum	Filters are blocked	Clean all filters
Unable to recharge normally	Incompatible power adaptor	Use a 5v power adaptor

## Technical Data

Clippers		Motor Unit
Lithium battery capacity	2000mAh 4v	Power 300w
Charging time for Clipper	3 – 4 hours	Voltage 230v AC
Max No load speed	160rpm	
Power adaptor required (not supplied)	General 5v adaptor	

**Please ensure that you dispose of any electrical waste and batteries in the most environmentally friendly way and ensure these are recycled wherever possible.**

## Electrical Connection - Clippers

This unit is a Class III battery-powered appliance which means it operates at SELV (Safety Extra Low Voltage).

This unit is supplied with a USB-C charging cable. If this lead is damaged DO NOT USE for charging your HS265. Instead, replace immediately, CP300 Part No; EB1374.

### **Your Warranty**

This product is covered by a 2-year warranty for domestic use only. This warranty does not extend to use in professional grooming salons.

This does not cover normal wear and tear or abuse. For guarantee purposes, please retain your original receipt as proof of purchase.

This warranty does not affect your statutory rights.

Made in China EB01377 12/23

© December 2024



For spares, service and further information please visit the shop page  
on our website [www.Carolina-Pets.com](http://www.Carolina-Pets.com) alternatively  
email: [enquiries@Carolina-Pets.com](mailto:enquiries@Carolina-Pets.com)

Ewbank LLC  
6801-D Northpark Boulevard, Charlotte, NC 28216 USA  
Email: [enquiries@Carolina-Pets.com](mailto:enquiries@Carolina-Pets.com)

**Telephone:** +1 704 827 9385