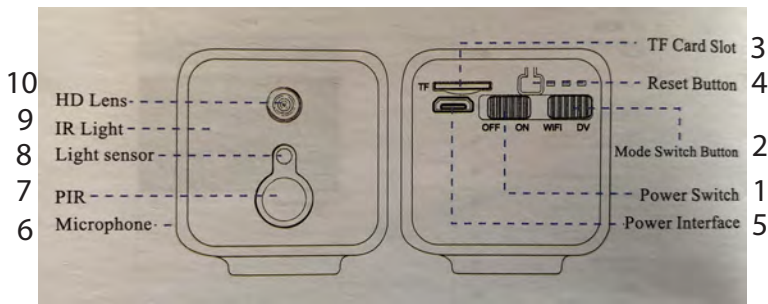


Quick set up guide:

TOKK CAM S9+

PRED
TECHNOLOGIES



- | | |
|----------------------------|---------------------|
| 1. Power Button | 6. Mic |
| 2. Mode Button | 7. PIR |
| 3. Micro SD Slot (TF card) | 8. Light Sensor |
| 4. Reset Button | 9. Photosensitivity |
| 5. USB Port (Power Switch) | 10. Lens |

Thank you for your order. We hope you will Enjoy your new TOKK CAM S9+ Camera.

Below is our quick set up guide. If you want more details please refer to the complete instruction manual.

If you encounter any issues setting up your new camera, please do not hesitate to call us and we will be very happy to help you. Our customer service phone number is +1 858 999 2114 ext 1.

First time set up:

1- If you have a SD card, insert it (3), if you do not, don't worry, please continue (you can always install it later.)

2-Turn on the camera (1) and turn the mode switch (2) to WIFI, check out figure (A)

3-Scan QR code (B) to download the application called "Fowl" on your smart device, you can also open your browser on your smart device and type:

<https://apps.apple.com/us/app/fowl/id1509600438> to download the app.

4-Open the app "Fowl", Allow the App to send notifications and select Agree to the privacy agreement.

5- Login: you can type an email and create a password (to retrieve your login, this will be useful), but you do not have to if you do not want to, in this case select Register Now.

Then create a user name and a password, press submit.

Allow the app to have access to your location (Allow while using App is recommended). Then close the app.

6- Go to WIFI settings on your smart device.

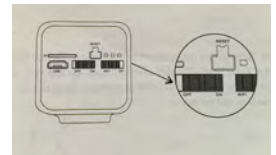
7- Wait until your camera name appears "@MC-XXXXXX", when it appears select it (disregard messages like "unsecured network, or"/no Internet access...") as long as "@MC-XXXXXX", is selected as your wifi network go to the next step.

8- Open the app "Fowl" again

9- Your device will automatically appears, just press the play button in the middle of the screen to check out the live feed.

10-Add your wifi, so you can access the camera from outside your home or office: open settings in the app via the wheel icon, open wifi settings, select your wifi from the list, and type your password, then type ok, and confirm your password. Then login again using your password , you are now all set up.

A



B



Thanks to its technology, when you leave the TOKK CAM S9+ on and it is connected to your Wifi, TOKK CAM S9+ will automatically shut down and turn on when it detects movement, it will trigger a notification to your phone.

PRED Technologies USA Inc.
7855 Fay Avenue
La Jolla, CA 92037

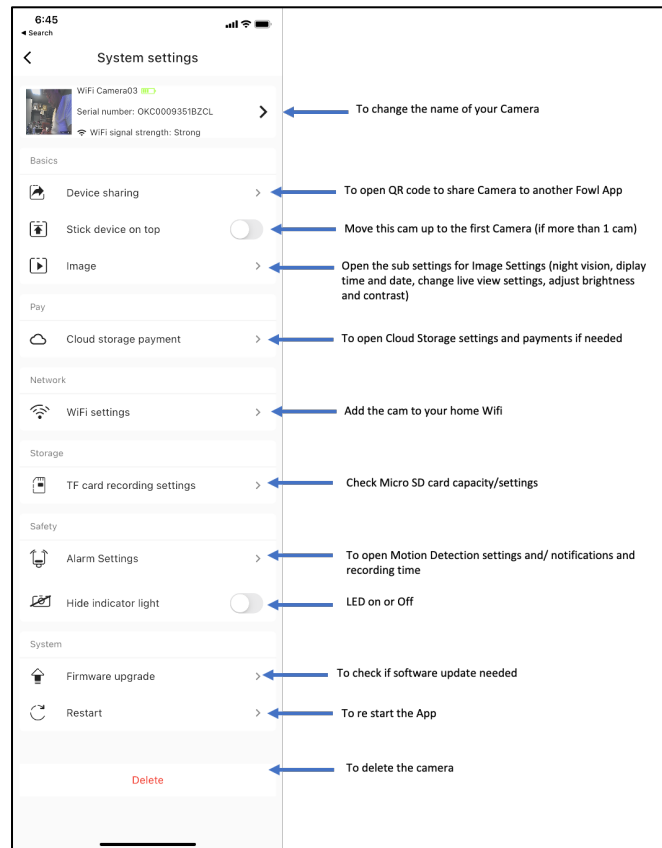
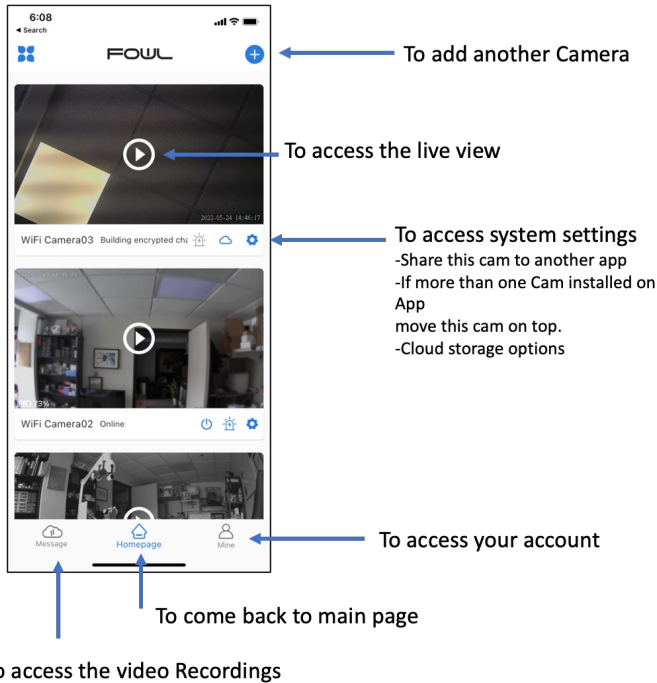
1-858-999-2114
contact@predtechnologies.com
www.predtechnologies.com

PRED
TECHNOLOGIES

Quick set up guide for TOKK™ CAM Fowl App



APP home page



Individual Cam home page

