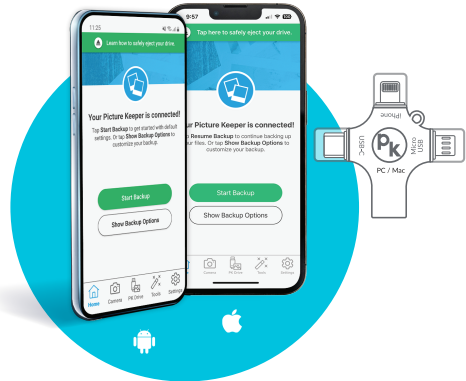




Phone Instructions

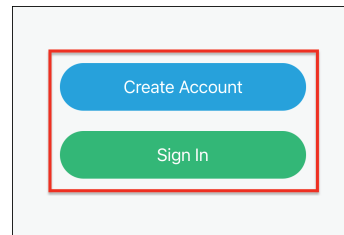


Have Questions? Need Help?
Visit us at picturekeeper.com/help
Email us at support@picturekeeper.com
Call us at +1 (877) 382-0949

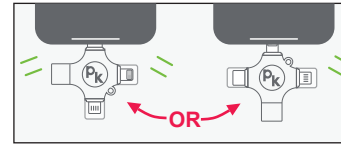
1 Download the Picture Keeper Connect app from the Apple App Store or Google Play Store

2 Open the App

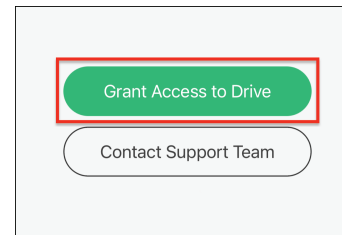
3 Create an account, or sign into an existing account



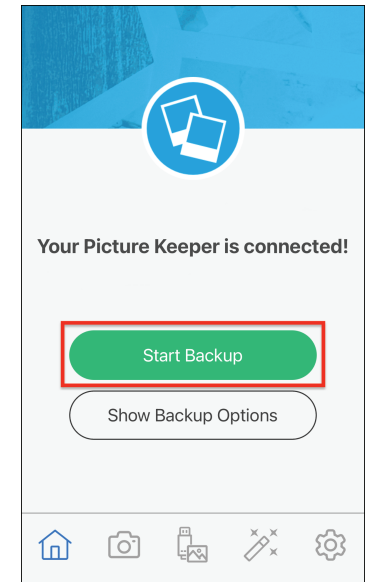
4 Follow the on-screen instructions to connect your Picture Keeper



5 Continue to follow the on-screen instructions to **Grant Access to Drive** and/or **Open Drive Picker**



6 Tap **Start Backup**, and follow any prompts to allow full access to photos



Computer Instructions



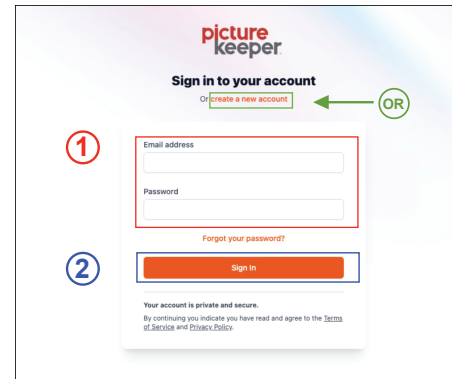
Have Questions? Need Help?
Visit us at picturekeeper.com/help
Email us at support@picturekeeper.com
Call us at +1 (877) 382-0949

1 Connect your Picture Keeper to your computer

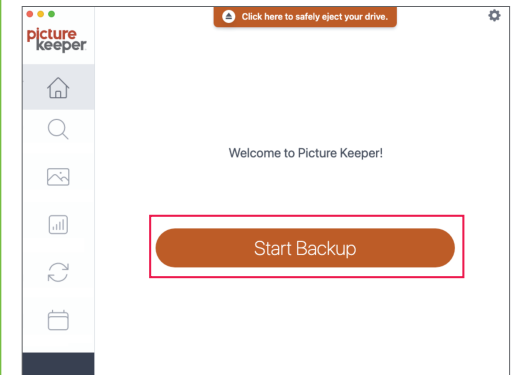
2 Look for an external drive called "PKBACKUP" to appear, and open it

3 Double-click "Launch PictureKeeper" on Windows, or "PictureKeeperForMac" on Mac to open the app

4 Sign in to your Picture Keeper account, OR create a new account



5 If prompted, be sure to install the latest update, then click **Start Backup**





Phone Tips

Make sure the Picture Keeper Connect app is updated to the latest version

Make sure your phone or tablet is fully charged, and running the latest version of iOS or Android

Close any other open apps

If Picture Keeper isn't detected, restart your phone, and remove your case

To avoid data loss, always eject before disconnecting, and keep a second copy of your photos/videos on another device (like a computer, or another Picture Keeper)

iPhone / iPad Guides



picturekeeper.com/pkc-ios

Android Guides



picturekeeper.com/pkc-android

Scan the QR code(s) above using your phone camera, or type the URL(s) into your internet browser

Key Terms

- Backup** The process of copying files from your phone, tablet, or computer to your Picture Keeper
- Restore** The process of copying files from your Picture Keeper, back to your phone, tablet, or computer
- Clone** Tells Picture Keeper to ignore any backup records, and instead start the backup from the beginning
- Eject** The safe way to disconnect Picture Keeper before unplugging
- Options** *Show Backup Options* or *Search Options* are where you can adjust where and what will be backed up
- Overview** Shows your drive stats, such as how much storage is available
- Duplicate** A file Picture Keeper has previously backed up from the device in use
- Reset** Erases your files and/or backup records from your Picture Keeper



Computer Tips

Connect your Picture Keeper directly to your computer, not to a USB hub or any other computer accessories

Always install updates when prompted

If Picture Keeper isn't detected, restart your computer, try another USB port and disable any anti-virus software

To avoid data loss, always eject before disconnecting, and keep a second copy of your photos/videos on another device (like a phone, or another Picture Keeper)

Windows Guides



picturekeeper.com/pkc-windows

Mac Guides



picturekeeper.com/pkc-mac

Scan the QR code(s) above using your phone camera, or type the URL(s) into your internet browser

Additional Info

Didn't purchase from picturekeeper.com?
That's OK! Please contact our U.S. support team directly for help with your Picture Keeper product.

Microsoft and Windows are either registered trademarks or trademarks of Microsoft Corporation in the United States and/or other countries. Apple, Mac, macOS, and iOS are either registered trademarks or trademarks of Apple Corporation in the United States and/or other countries. Android is either registered trademark or trademark of Google Corporation in the United States and/or other countries.

"Made for iPhone", "Made for iPad" and "Made for iPod" means that an accessory has been designed to connect specifically to an iPhone, iPad, and iPod and has been certified by the developer to meet Apple performance standards. Apple is not responsible for the operation of this device or its compliance with safety and regulatory standards. Please note that the use of this accessory with an iPhone, iPad, or iPod may affect wireless performance.

© 2024 Simplified IT Products, LLC
To access our Limited Warranty or End-User License Agreement visit picturekeeper.com/warranty and picturekeeper.com/user-agreement

