

SMART LED STRING LIGHTS

Item No. 210193

User Guide



Thank you for purchasing the Smart LED String Lights. Please take a moment to read this guide and store it for future reference. These innovative string lights not only illuminate your space with vibrant colors but also provide high-quality sound through built-in speakers. This manual will guide you through the setup, operation, and maintenance of your new string lights.

PACKAGE CONTENTS

- 1 x Smart LED String Lights
- 1 x Power Adaptor
- 30 x Double-Sided Tape
- 1 x User Manual

MAINTENANCE

- Clean the string lights with a dry, soft cloth.
- Do not use harsh chemicals or abrasive materials to clean.
- Store the lights in a cool, dry place when not in use.

SAFETY INSTRUCTIONS

- Read all instructions carefully before using the product.
- Use the provided power cable only.
- Keep out of reach of children and pets.
- Unplug/turn off the lights when not in use.

SPECIFICATIONS

Input Voltage	24V DC
No. of Lights	30 LEDs
Max Power	48W
Color	RGB – 16 million colors
Rated Voltage	100-240V, 50-60Hz
IP Rating	IP65
Bulb Lifetime	20,000 hrs.
Length of Adapter Cable	9.8 ft.
Lamp String Length	50 ft.
Weight	3.4 lbs.
Bulb Spacing	19.6 in.
Connection	2.4Ghz Wi-Fi
Working Temperature	-13 °F [-25°C] – 113°F [45°C]

QUICK INSTALLATION GUIDE

NOTE: Before proceeding with the installation of your Smart LED String Lights, we highly recommend testing the Bluetooth connectivity prior to installation. This step ensures that your device pairs successfully with your smartphone or control device, allowing for a smooth and hassle-free setup process.

Step 1: Test Lights and Music

- Plug the Smart LED String Lights into a power outlet to ensure the lights work before installation.

Step 2: Prepare Installation Surface

- Clean the surface with a cloth where you plan to install the Smart LED String Lights. Ensure the surface is dry and clean.
- It is recommended to install the Smart LED String Lights 2-4 inches away from the wall surface.

Step 3: Attach Lights with Tape

- Peel off one side of the included double-sided tape and stick it to the back of the light.
- Remove the other side of the double-sided tape and press the light firmly against the mounting surface for more than 5 seconds.

Step 4: Secure with Screws

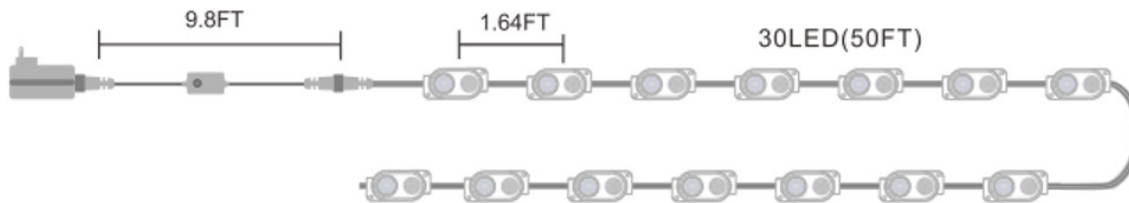
- Use screw clips to fix the string lights firmly on the strand. Each bulb can be fitted with 2 screws, or you can choose to fit 2 bulbs with a single screw.

Step 5: Repeat

- Repeat steps 2, 3 and 4 to fully install the Smart LED String Lights.

Step 6: Power Up

- Plug the lights into a power outlet and start enjoying your smart lighting.



CONTROLLING BY APP

How to connect to the Wi-Fi Network

1. Download the Smart Life App

- Download the Smart Life App from the Apple Store or Google Play.



- Alternatively, scan the QR code to install the Smart Life App on with iOS or Android.

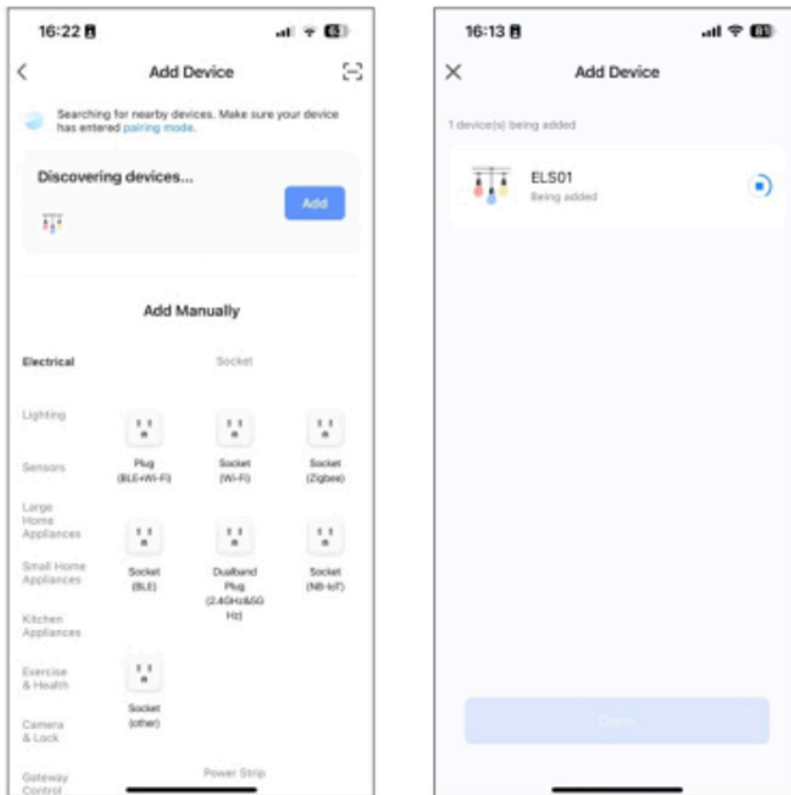


- Once downloaded, the app will prompt you to register your device. Enter your phone number or email address and select your country of residence.
 - If you register with your phone number, you will receive a text message with a registration code to create a password.
 - If you register with an email address, you will need to create a password.

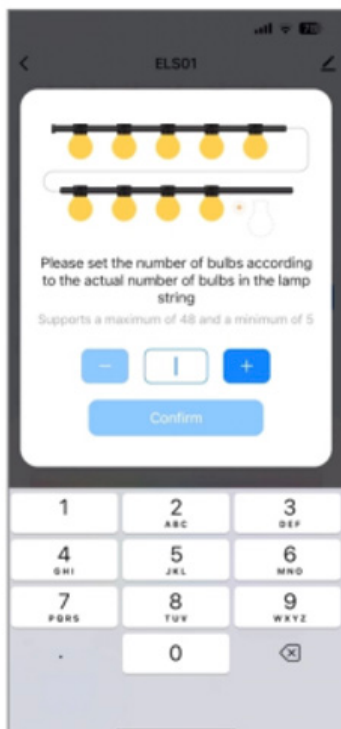
PLEASE NOTE: There are 2 mode configurations [Bluetooth Mode or Quick Mode] available to add the device to the Smart Life App. Bluetooth Mode is recommended [ensure your phone's Wi-Fi, Bluetooth, and GPS are turned on first].

CONFIGURING CONNECTIONS PROCEDURE

1. Add Your String Lights in the Smart Life App

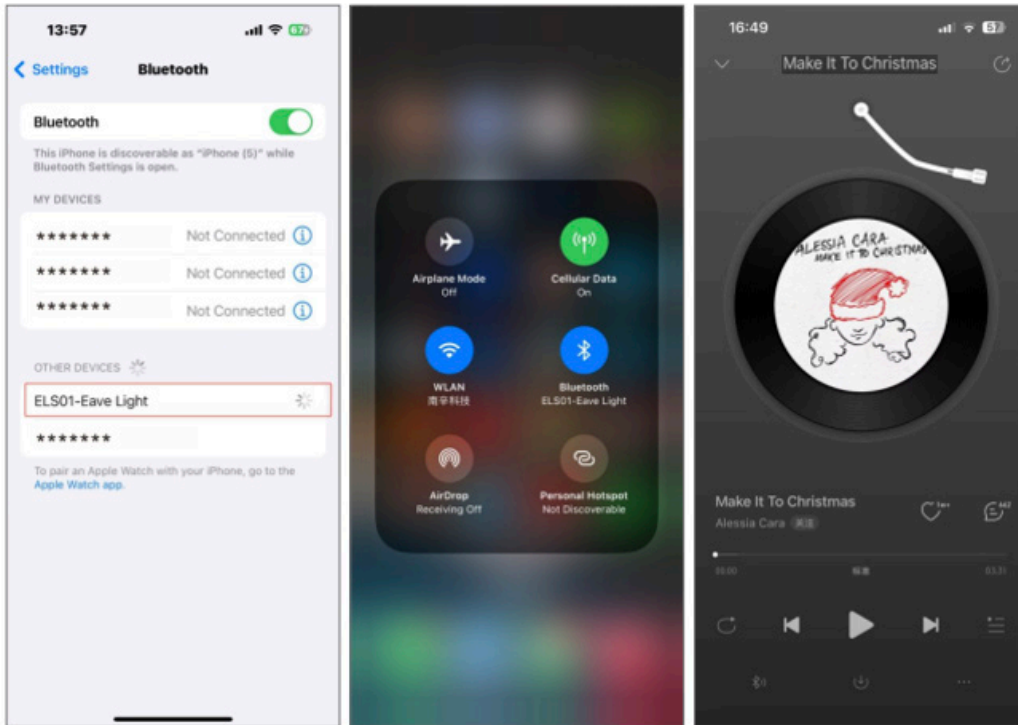


- Enter the correct number of light bulbs for this product (30 bulbs).



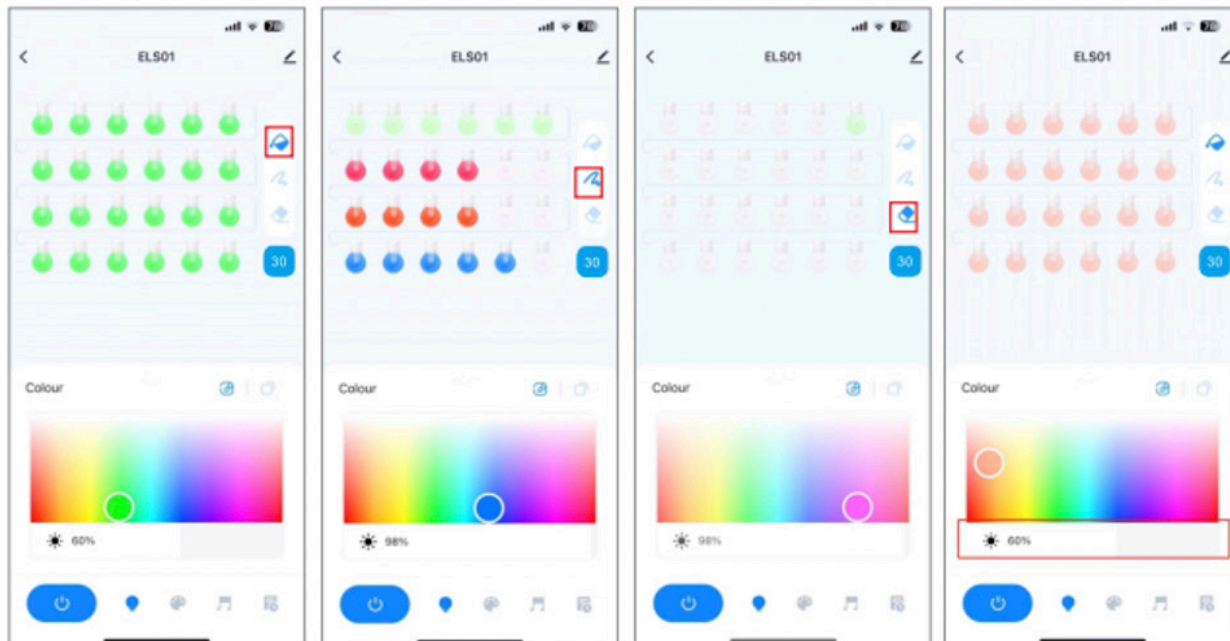
2. Bluetooth Connection

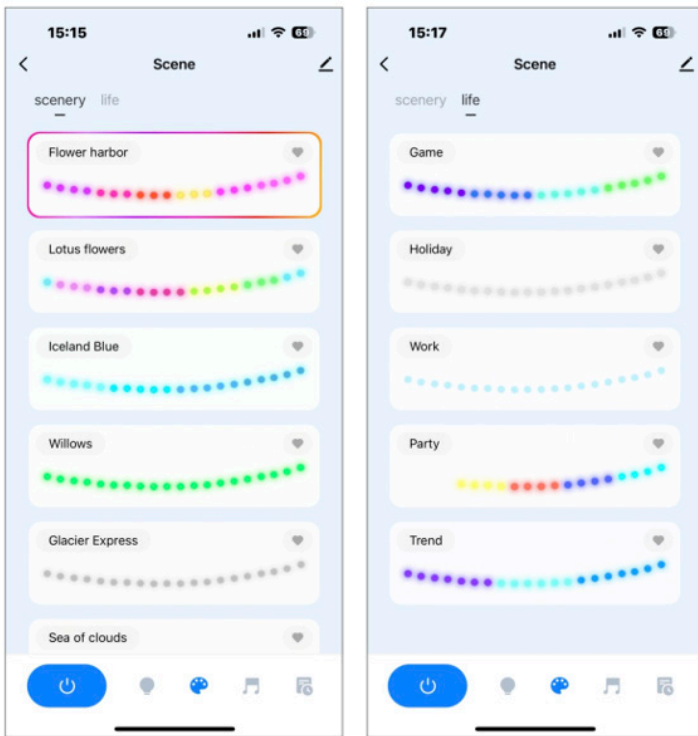
- Turn on your phone's Bluetooth and search for "ELS01-Eave Light".
- After a successful Bluetooth connection, the Smart LED String Lights will play music from your music app.



3. Using the App Tools

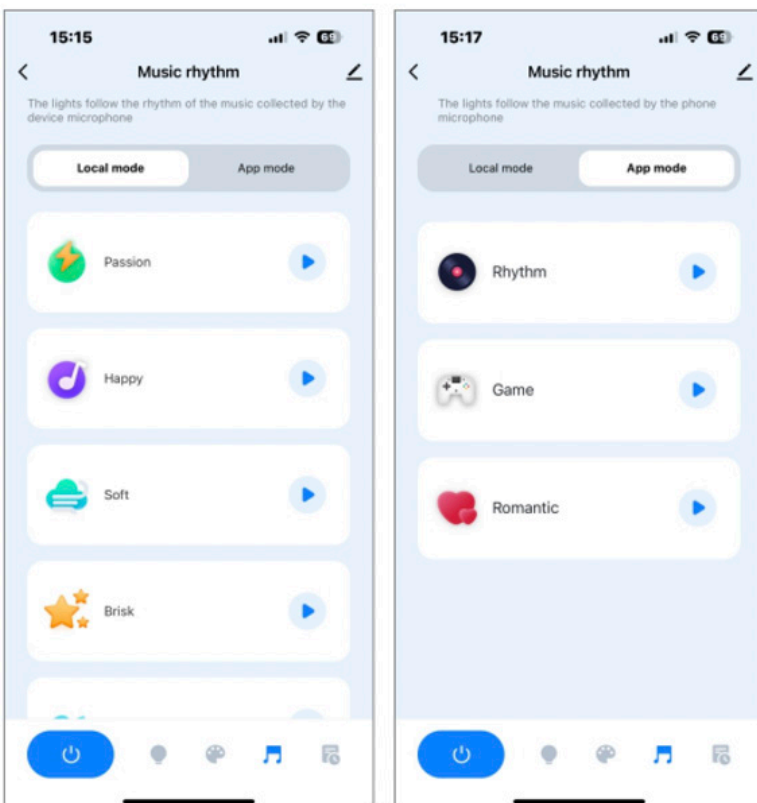
- **Fill Tool:** Change all the bulbs to one color.
- **Pattern Tool:** Create custom patterns and select colors.
- **Eraser Tool:** Delete colors that have already been selected.
- **Brightness:** Set the brightness for the bulbs.
- **Scenes:** Choose different scenes you like.



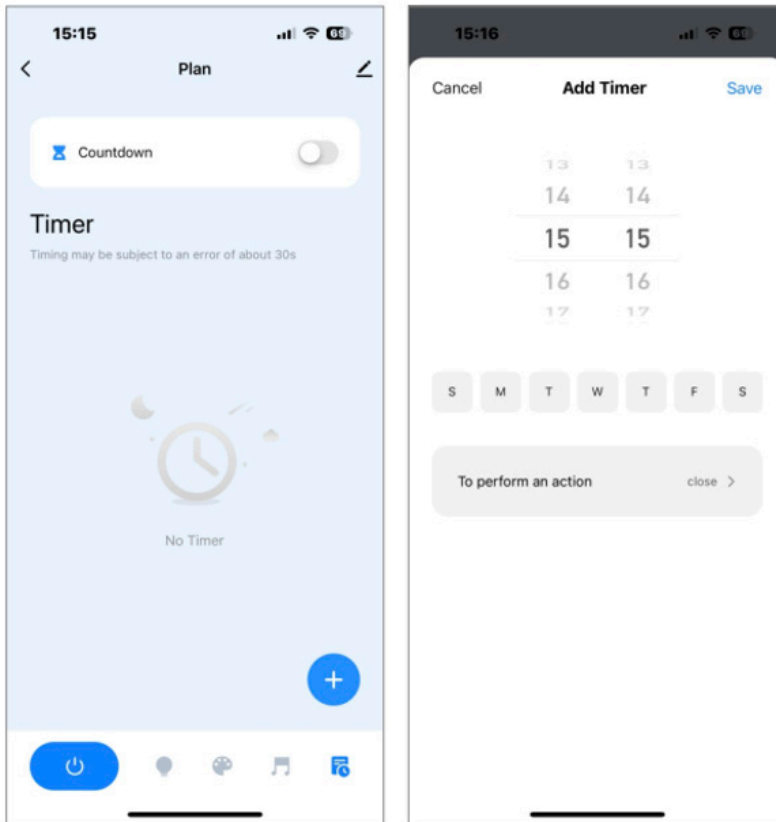


4. Music Rhythm

- **App Mode:** Using the phone microphone, the lights will change in tune with the music playing.
- **Local Mode:** Using the String Light's microphone, the lights will change in tune with the music playing.



5. Timer: Set a time to automatically turn off the lights.



HOW TO CONNECT TO AMAZON ALEXA

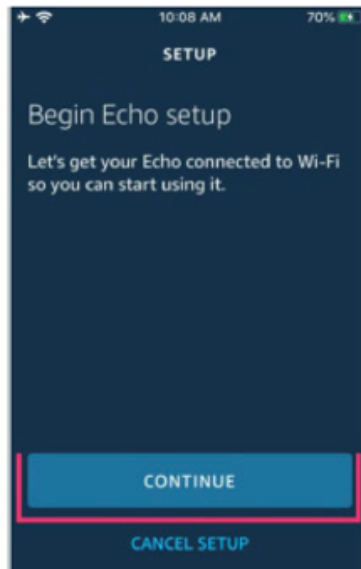
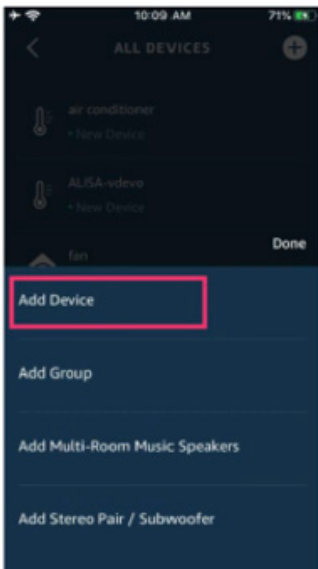
Step 1: Complete Product Networking Configuration in the Smart Life App

1. Open the Smart Life App on your phone.
2. Follow the prompts in the app to complete the device's networking configuration.
3. Change the device name to something easily identifiable, such as "Alexa". It is recommended to use names in English.

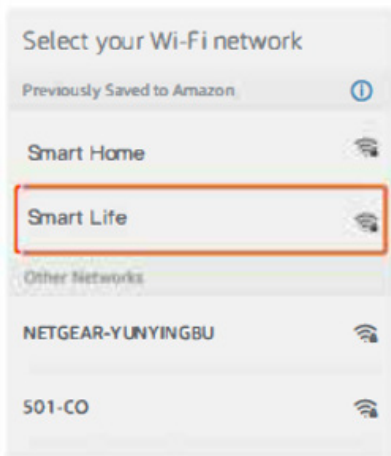
Step 2: Configure the Amazon Echo Device

Note: If you have already configured your Amazon Echo, you can skip this step. The following instructions are based on the iOS client.

1. Ensure your Amazon Echo device is powered on and connected to a Wi-Fi network.
2. Open the Alexa App on your phone. After logging in successfully, tap the menu in the upper left corner of the Home Page.
3. Select "Settings" and then tap "Set Up a New Device" to set up the Alexa Echo.
4. Choose your Amazon Echo device type and language for connecting.



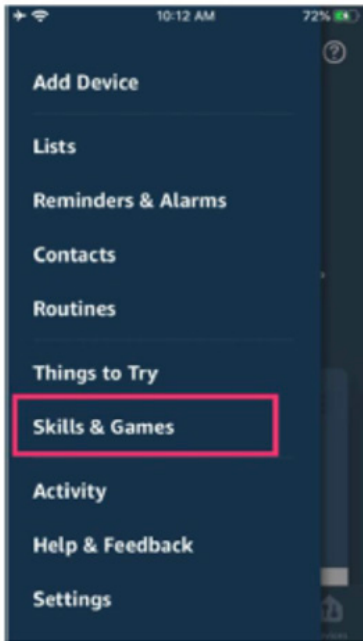
5. Press and hold the small dot on the device until the light turns yellow, then tap “Continue” to connect to the hotspot.
6. After connecting to the Amazon Echo hotspot, return to the previous page. The connection should now be successful. Tap “Continue” to proceed.
7. Choose a Wi-Fi network connection. Amazon Echo will take a few minutes to connect to the network.



8. Once the network connection is successful, tap “Continue”. An introduction video will appear. After the video ends, tap “Continue” to go the Alexa Home page.
9. You have now completed the Amazon Echo configuration process.

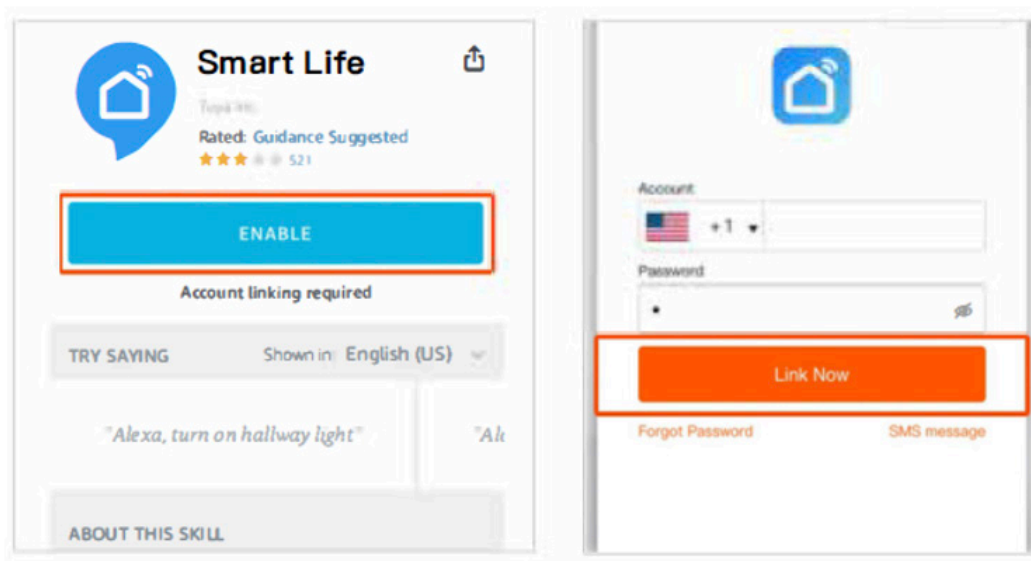
Step 3: Link the Smart Life Skill

1. Open the Alexa App on your phone.
2. Tap the menu in the upper left corner and select "Skills & Games".



3. Search for "Smart Life" in the search bar.
4. Tap "Enable" to enable the Smart Life Skill.
5. Enter your Smart Life App account and password, then tap "Link Now" to link your Smart Life account.
6. Once linked, you can start controlling your Smart LED String Lights using Alexa.

You are now ready to enjoy using your smart home journey with Amazon Alexa and your Smart LED String Lights.



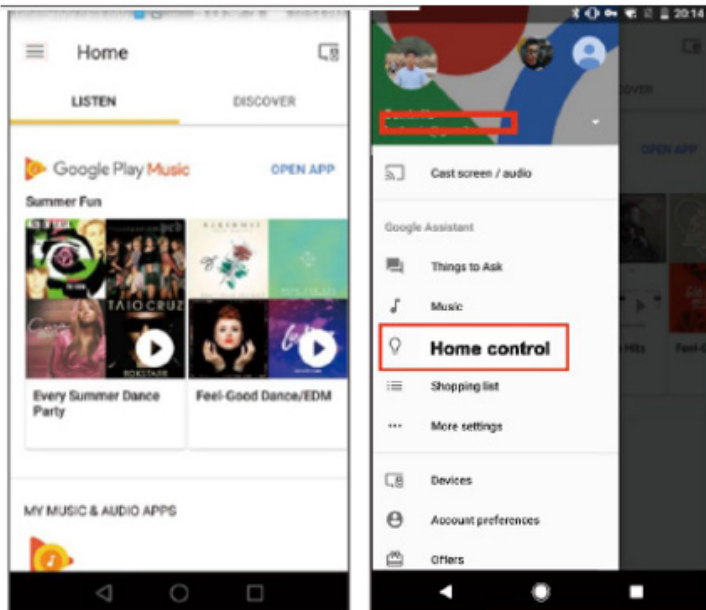
HOW TO CONNECT TO GOOGLE HOME

Step 1: Install the Google Home App and Speaker

1. Launch the Google Home App on your phone.
2. Ensure your Google Home speaker is installed. If not, follow the Google Home speaker installation instructions to complete the installation.

Step 2: Link your Smart Life Account

1. Open the Google Home App.
2. In the upper left corner of the Home page, tap the “Menu” button (≡).
3. Select “Home Control” from the menu.



4. Tap the “+” button to add a new device.
5. Search for “Smart Life” and select it from the list.
6. Enter your Smart Life App account credentials and sign in.
7. Follow the prompts to link your Smart Life account with Google Home.

Step 3: Assign Room to Devices

1. After successfully linking your account, you will see all your smart devices from your Smart Life App account in the Google Home App.
2. You can assign each device specific rooms for better organization and control.

Step 4: Control Your Smart Device with Google Home

Now you can use Google Home to control your Smart LED String Lights. For example, you can say:

- “Hey Google, turn on the Smart LED String Lights”
- “Hey Google, set the Smart LED String Lights to 50% brightness”
- “Hey Google, play music on the Smart LED String Lights”

Enjoy your enhanced smart home experience with Google Home and your Smart LED String Lights.

FREQUENTLY ASKED QUESTIONS

1. What should I do when the configuration fails?

- Ensure the Smart LED String Lights's red light is flashing twice per second.
- Connect your Smart LED String Lights close to your internet router.
- Verify that your available internet network operates at a 2.4GHz frequency.
- Confirm your internet connection is functioning properly.

2. How can I share devices with my family members?

- Open the Smart Life App, select "Profile" > "Device Sharing" > "Sent"> "Add Sharing". Now you can share the device with your family members.

3. Can I control the device from a distance?

- Once connected to the internet, there is no distance limitation for controlling the device.

4. Can I control the devices with a 2G/3G/4G network connection?

- The Smart LED String Lights must be initially registered on a 2.4 GHz Wi-Fi network. After a successful connection, the device can be controlled via a 2G/3G/4G network using your smartphone.

ADDITIONAL INFORMATION

Note: *memory card is not included.*

Without a Memory Card:

- When powered on, the device will announce "The Eave light has been powered on", indicating the system is active.
- It will prompt: "Waiting to connect to the music player". Turn on your mobile phone's Bluetooth and search for "ELS01-Eave Light" to pair. The device will announce: "The music player has been connected successfully".
- If the Bluetooth connection is lost, it will prompt: "The music player has been disconnected". If not reconnected within 5 minutes, the device will power off, and you will need to turn it on again to connect to the Bluetooth Player.

With a Memory Card:

- Upon powering on, the device will announce: "The Eave light is powered on", followed by "Play memory music". The music from the memory card will play sequentially.
- If the user's mobile phone connects to the player, the device will exit memory playback mode and enter Bluetooth connection mode: "Waiting to connect to the music player". Pair your mobile phone by searching for "ELS01-Eave Light".
- After a successful connection, the device will announce: "The music player has been connected successfully".
- If the Bluetooth connection is lost, it will prompt: "The music player has been disconnected". Without reconnection, the device will switch to memory playback mode after 5 minutes and continue playing music from the memory card.

WARRANTY AND CUSTOMER SERVICE

This item from SharperImage.com includes a 1-year limited replacement warranty. If you have any questions not covered in this guide, please call our Customer Service department at 1 (877) 210-3449. Customer Service agents are available Monday through Friday, 9:00 a.m. to 6:00 p.m. ET.

SHARPER IMAGE®

The SHARPER IMAGE® name and logo are registered trademarks.

©Sharper Image. All Rights Reserved.