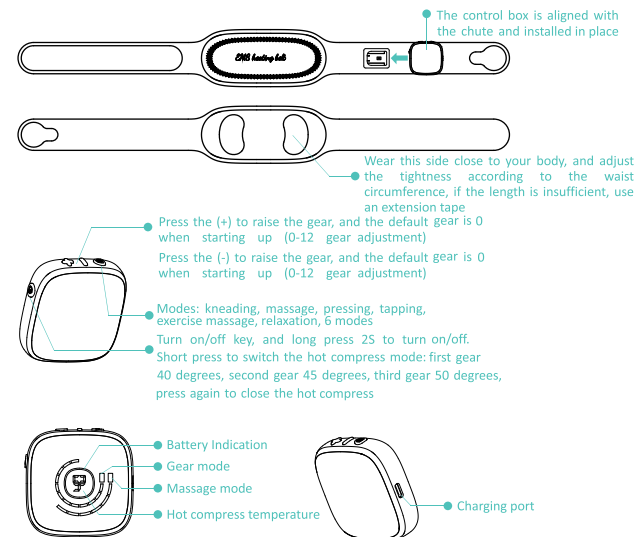


Operating Instructions



Operating Instructions

Serial No.	Lamp status	Status Description
1	The blue light is always on	Power on (when the power is sufficient)
2	The blue light is always on	Adjust the massage and hot compress gear when the power is on (when the power is sufficient)
3	The red light flashes	The power is low
4	The blue light breaths	Charging
5	The blue light is always on	Fully charged

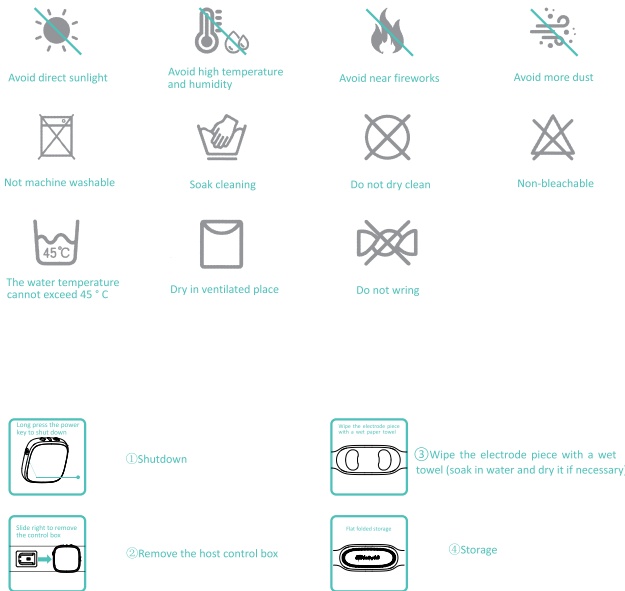
Important note:

1. Power on key: long press for 2 seconds to power on, long press for 2 seconds to power off
2. For mode gear adjustment, press (+) to raise the gear. The default gear is 0 (0-12 gear adjustment) when starting up, and press (-) to raise the gear. The default gear is 0 (0-12 gear adjustment) when starting up.
3. When adjusting the hot compress gear: power on key: long press for 2 seconds to start up, short press to switch the hot compress mode: first gear 40 degrees, second gear 45 degrees, third gear 50 degrees, press again to close the hot compress
4. Warm prompt: when using hot compress gear 3, please use it through clothes.

Precautions for Product Abandonment

Danger	Warning
<p>Please support the recycling of rechargeable batteries (Lithium ion batteries)</p> <p>The battery used in this product is a special rechargeable battery, which shall not be used to other products.</p> <p>Do not put it into the fire to make it overheat.</p> <p>Do not use nails to pierce, impact by gravity or disassemble.</p> <p>Do not directly connect the positive and negative electrodes of the battery with metal.</p> <p>Please do not store it with needles, pens, etc.</p> <p>Please do not charge, use or dispose in high temperature places such as the stove or under the hot tub.</p> <p>The above conditions may cause heating, fire, cracking, etc.</p>	<p>Please keep the removed rechargeable battery out of the reach of infants, in order to prevent accidental ingestion.</p> <p>If swallowed by mistake, please consult a doctor immediately.</p> <p>When the battery liquid leaks, do not touch liquid with bare hands. And handle it as follows:</p> <p>When the battery liquid enters the eyes, there is a danger of blindness. Do not rub your eyes directly with your hands. Wash them with clean water immediately and consult a doctor for treatment. When the battery liquid touches your body or clothes, it may cause skin irritation or injury. Please wash them with clean water. If you still feel unwell, you need to see a doctor immediately.</p> <p>The product can only be disassembled when it is discarded. If it is not observed, it may lead to fire, electric shock, injury and other accidents. If it needs to be repaired or for battery replacement, please consult the shop where you bought the product.</p> <p>The lithium-ion battery used in this product is a valuable resource that can be recycled. Please give it to a professional organization that can recycle rechargeable batteries for disposal after use. The battery must be removed from the appliance before it is discarded. When removing the battery, the appliance must be powered off. Batteries should be disposed of safely. Take out steps:</p> <ol style="list-style-type: none">1. Use professional tools to spread the plastic shell at the non-key side;2. Cut the battery lead with scissors;3. Remove the battery.

Daily Maintenance of Instrument



Basic Product Parameters

Product name	Massage belt	Model	SL011
UPC Number	850011335765	Rated charging voltage	5V
Battery capacity	3.7V 1800mAh	Rated input power	10W
Executive standards		GB4706.1-2005	GB4706.10-2008

Note: This product is a rechargeable product, which is suitable for TYPE-C interface charging. The user needs to use a standard charger with an output of 5V±, 1A that complies with GB4706.1 for charging.

Recycling of Products and Parts

Part name	Name and content of harmful hazardous in the product						
	Pb	Hg	Cd	Cr(VI)	PBB	PBDE	
Hardware	×	○	○	○	○	○	○
Plastic parts	○	○	○	○	○	○	○
Circuit board	×	○	○	○	○	○	○
Battery pack	×	○	○	○	○	○	○
Accessory	×	○	○	○	○	○	○

○: It indicates that the content of the hazardous substance in all homogeneous materials of the component is below the limit specified in GB/T 26572.

×: It indicates that the content of the hazardous substance in at least one homogeneous material of the component exceeds the limit specified in GB/T 26572.

The "environmental protection service life" of the product is 10 years, which is determined by the enterprise according to the product design characteristics. The "environmental protection service life" is valid only when the product is used under the normal conditions described in the user manual.

Note: 1. Other components and homogeneous materials contained in this product that are not listed in the above table do not contain hazardous substances.

2. All components and homogeneous materials containing hazardous substances in the above table comply with the strict requirements of RoHS in China on the restriction of hazardous substances. Please feel free to use them.

Recycling of Products and Parts

!Warning

Please never use it together with the following medical electronic equipment to avoid impact and injury

- Cardiac pacemaker and other implanted medical electronic equipment
- Life sustaining medical electronic equipment such as artificial heart and lung
- Electrocardiograph and other medical electronic equipment

Prohibited in petrol stations, high dust workshops, gas stations and other flammable and explosive places

!Warning

If the patient uses high-frequency surgical equipment and massage instrument on the body at the same time, it may cause burns at the electrode sheet of the massage instrument and may also damage the massage instrument.

If the product is used near the shortwave or microwave treatment equipment (1m), the output of the massage instrument may be unstable.

During massage, the electrode sheet shall not touch the wound and scar.

During massage, the electrode sheet shall not be placed near the chest and heart, otherwise, it will increase the risk of cardiac fibrillation.

The product is recommended to be used by one user. When it is used by cross users, please clean the electrode sheet on the product before use.

When using the product, the electrode sheet shall be tightly attached to the skin.

The electrode sheet of this product has the heating function. When the heating function is turned on, the long time (more than 20 minutes) use of the hot compress function at the same part may cause low-temperature burns.

In case of discomfort during or after use, it is recommended to stop using and consult a doctor.

This product contains lithium battery. Please do not disassemble, modify, immerse the product in water or throw it into fire, otherwise the product may be damaged and explode.

Do not use it near the heart, above the neck, head, mouth, private parts or skin disease affected areas, and do not massage the soles of both feet at the same time.

In addition, do not compress internal organs when using. Otherwise, an accident or discomfort may occur.

Please do not use it with other medical equipment or more than 2 sets of this product, otherwise it may cause nausea or discomfort.

Please do not use it for purposes other than massage recorded in the user manual, otherwise accidents and failures may occur.

-Do not use the electrode sheet with notch or damage on the surface, otherwise accidents and failures may occur.

-Do not disassemble, repair or modify this product without authorization, otherwise it may cause failure or electric shock.

In the following cases, please consult your doctor before use. Otherwise, accidents or discomfort may occur:

-Patients who are being treated by doctors and feel abnormal

-Patients with abnormal heart and brain nerves

-Patients with skin perception disorder or skin abnormality

-Patients whose temperature exceeds 38 °C (fever period)

-People whose skin is sensitive to graphene/graphite

-Patients taking drugs

-Patients with abnormal blood pressure

-Patients who cannot express their wishes freely

-Patients with perception disorder caused by high peripheral circulation disorder such as diabetes

It is prohibited to use under the following circumstances:

-Patients with malignant tumors

-Pregnant and lying-in women

-Pacemaker users

-Near the human heart

-Patients suffering from bleeding

-Patients with acute suppurative inflammation

-Patients with metal implants

-Patients with spastic paralysis

-People with coagulation dysfunction

-People with spastic period after cerebrovascular accident

-People with severe cognitive impairment

-Eyes

-People are unconscious, or with limb bone joint contracture deformity

-Patients with nerve stress disorder

!Notice

Please read the instructions before using this product.

If you feel unwell due to the abnormality of this product, please stop using it immediately. If you have abnormal feeling on your body or skin, please consult your doctor and follow his instructions.

In the process of massage, if you want to move the electrode sheet or move on other people, be sure to cut off the power supply before moving, otherwise you may get a strong electric shock.

For patients with a history of cerebrovascular accident, do not place the electrode couple in the brain.

Please use the equipment within the temperature range of 0°C-35 °C, and store the equipment along with its accessories within the temperature range of -20°C-45 °C. When the ambient temperature is too high or too low, equipment failure may occur.

-Please do not take electronic equipment during massage. Otherwise, the electronic devices may be misoperated (for example, the time of the electronic watch is disordered).

In case of abnormal conditions that cannot be operated, please cut off the power supply immediately and remove it, otherwise high temperature or short circuit may occur and accidents may occur. At the same time, contact customer service and after-sales consultation.

-Do not plug or unplug the USB charging cable with wet hands, otherwise electric shock or accident may occur.

-Do not use it for children or people without expressive consciousness, otherwise it may cause accidents or physical discomfort.

Please do not use it in the bathroom or other places with high humidity, or use the product while taking a bath, or you may get a strong electric shock and damage the product.

-Do not use it at bedtime, otherwise it may cause malfunction of the equipment, and the electrode sheet may be moved to other body parts and cause discomfort.

Please do not use it when driving, otherwise it may cause discomfort due to excessive stimulation, which may lead to accidents.

-Do not stick the electrode sheet on the affected part for a long time, or it may cause dermatitis.

When massaging, do not let the metal parts of belts, necklaces and other objects contact the electrode sheet, otherwise it may cause strong electric shock.

When using the massage function, do not use it at the same part for a long time (more than 30 minutes), otherwise it may cause muscle fatigue at the massage part and cause discomfort.

Please wear this product correctly, and use it on the waist and back, wearing it symmetrically from left to right, otherwise an accident or discomfort may occur.

When unplugging the USB charging cable from the product body, do not pull the wire, but hold the wire plug and pull it out, otherwise it may cause electric shock or damage to the product.

The electrode sheet of the product has the function of surface heating, and attention must be paid when using it by people who are not sensitive to heat.

When the product works for a long time, the surface will heat up, which is a normal phenomenon.

Please confirm that the hot button works normally before using.

When the product is used for the first time, or the battery power loss after the product is put aside for a long time, please charge according to the user manual to ensure that it can work normally.

When this product is discarded, please handle it according to the relevant urban environmental protection regulations, otherwise it may cause environmental pollution.

-Recommended for people aged 16 and above.

!Do not use or store this product in the following places:

Places with direct sunlight | Places with high temperature and humidity | Places with water

Places with more dust | Places near fireworks | Places vulnerable to vibration impact | Strong

electromagnetic places

Product Warranty Card

Warranty policy

- Within 7 days from the date of purchase, if there is a product quality problem, you can return the payment at the invoice price or replace the same product.
 - Within 15 days from the date of purchase, if there is a product quality problem, you can replace the same product.
 - Within 12 months from the date of purchase, if there is a product quality problem, we can provide you with warranty service.
- Warranty provisions:
1. This card is only valid in Chinese Mainland (invalid in Taiwan, Macao and Hong Kong).
 2. For the needs of family life, consumers buy Gao Laimai electrical products, which are guaranteed for one year under normal use from the date of purchase.
 3. Under any of the following circumstances, the free warranty is not available, but the paid repair can be carried out:
 - a. Damage caused by improper use, maintenance and storage of consumers;
 - b. Damage caused by disassembly by the person who is not responsible for three guarantees repair;
 - c. Without three guarantees certificate and a valid invoice;
 - d. The model of the three guarantees certificate is inconsistent with the model of the repaired product or is altered;
 - e. Damage caused by force majeure.

Manufacturer: Shenzhen Bless Electronic Technology Co., Ltd

Service hotline: 0755-23014581

Qualified Certificate	Checker
	Production Date

User Repair Voucher

Product name	
Model	
Place of origin	
Warranty period	
Invoice no.	
Purchase date	

Maintenance records	
Date of repair	
Date of inspection	
	Fault, maintenance and handling
Maintenance unit	
Signature of maintenance personnel	