

# LED Light Strip User Manual

## EASY INSTALLATION

The Smart home device only supports 2.4Ghz frequency.If your router supports both 2.4Ghz and 5Ghz frequency.The 5G network is usually labeled as "Router-5G" so please connect to the other one.

Each smart home device can only be registered to one account, but it can be shared with others by using the sharing function of the app.

- 1 Scanning the QR code or download "eco4life" app by searching "eco4life" app from Google Play store(Android) or Apple Store(IOS).



- 2 Follow the instructions to create the account for eco4life.
- 3 Power the LED Light Strip on and use eco4life to add device.
- 4 Press "Add Device" icon in the middle of the app.

- 5 Choose "LED strip" icon from the app. (See image 1)
- 6 Follow the instructions in the app to connect the device. (See image 2)

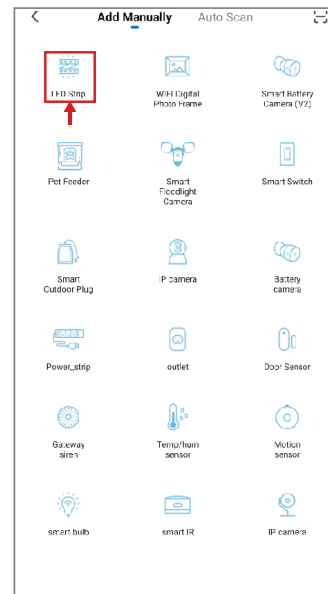


Image 1

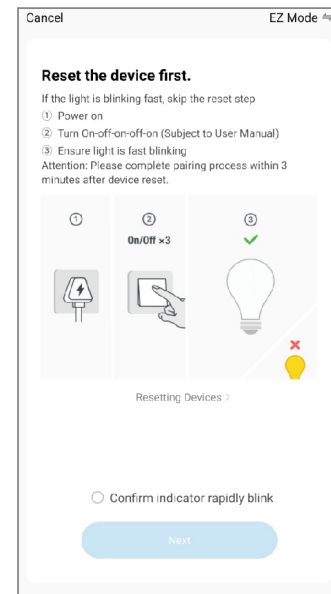


Image 2

## SUPPORT

For more troubleshooting help, please visit <https://eco4lifehome.com/pages/contact-us> for web support or send us an email at [cs@sonicgracehome.com](mailto:cs@sonicgracehome.com).

You can also go to <https://mall.eco4lifehome.com/pages/support> to download full product manual.