



## KeenEye IP Camera by eco4life (Alkaline Batteries, No Charging Time Needed)



### USER MANUAL Model: SC-BIPC-1001

For ongoing product improvement, this manual is subject to modification without prior notice.

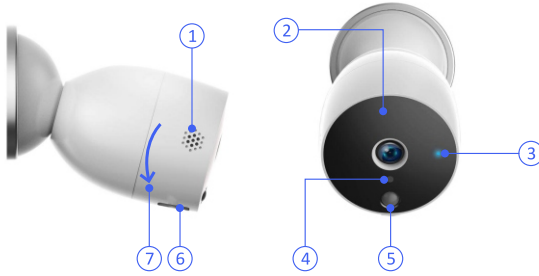
Thank you for purchasing the KeenEye IP camera by eco4life. We are excited in being a part of making your life easier, safer and bringing peace of mind into your homes.

#### What's in the Package?

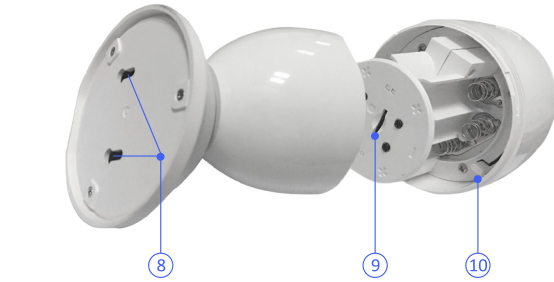
- 1 Camera
- 6 Alkaline Batteries
- 1 Warranty Card
- 1 User Manual
- 2 Screws
- 2 Plastic Housing

#### Let's Get Started!

(Please refer to the numbered Parts Guide below)



1



1. Speaker
2. Microphone

3. **Indicator Light:** Hold the Reset Button for 5 seconds on AP mode and refer to the Indicator Light Status below. Wait until the Green light is stable, which indicates that the Camera is now ready and is connected.

**Quick Flashing Red Light:** Smart configuration mode

**Slow Blinking Red Light:** AP mode, Awaiting Wi-Fi connection(recommendation)

**Flashing Red and Green Light:** Failed to connect network

**Quick Flashing Green Light:** Connecting to Wi-Fi

**Solid Green Light:** Operating mode

**Slow Blinking Green light:** Internet connecting and binding

**Solid Red Light:** Camera network is abnormal

**Solid Orange Light:** Updating Firmware

**Light is off:** Power saving mode

2

4. Light Sensor
5. Motion Sensor
6. Micro USB Port: Only for power on by Micro USB
7. Alkaline Battery Box: Turn this part counter clockwise to insert the alkaline batteries
8. Camera Base: The Package comes with 2 screws for wall mounting.
9. SD slot ( There is another SD slot on the inner part of the camera)
10. Reset button (On the Inner Part of the Camera)

#### Download and install the 'eco4life' App

**Download** the free eco4life App from the Google Play or Apple App store or scan the QR code below to download. Install the App and Register an account.



3

#### Install Alkaline Batteries into your camera

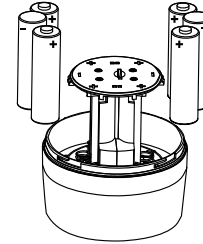
It is highly recommended that you use high performance alkaline batteries from reliable brands and manufacturers such as Panasonic, Duracell, etc with your KeenEye Camera.

To insert batteries into your camera:

1. Open the camera back cover.

2. Install the 6pcs alkaline batteries into your KeenEye camera.

Position the negative pole in between the 2 positive poles of the alkaline batteries. Follow this position on both opposite ends of the battery box.



Make sure you have the right positioning of the battery according to the correct polarity as instructed.

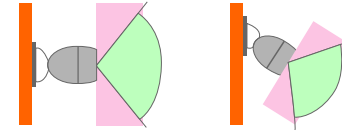
#### Choose a good spot for your camera

Mount and position your KeenEye camera in a location with a clear, unblocked field of view and with a good WiFi signal from the wireless router.

It is very important to consider distance, wall barriers and proximity of camera with the wireless router.

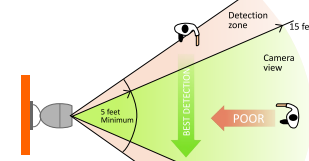
4

Position your Camera to optimize its field of view with your KeenEye camera has a 110-degree field of view, in the following images, the green areas show your camera's field of view, both horizontally and vertically.



Mount your camera on an elevation of at least 7 feet above the floor or ground area. Tilt and aim it slightly downwards for best motion sensor performance.

Motion Sensor on the KeenEye camera is more sensitive to a side-by-side movement across its field-of-view than direct movements to and from the camera. Motion detection is at best from 5ft - 15ft distance from the camera's position.

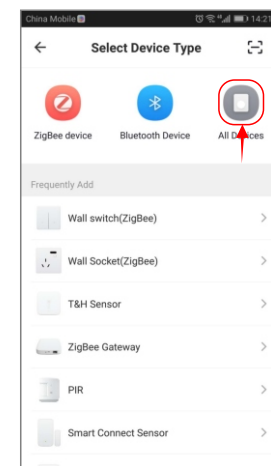
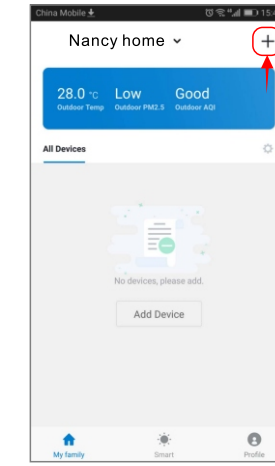


5

#### How to install the KeenEye camera

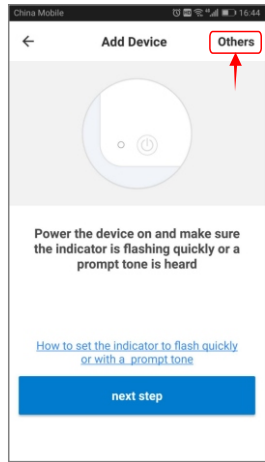
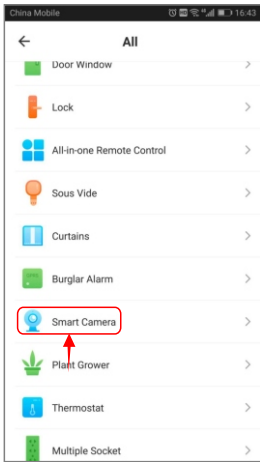
**Step 1:** Install 6pcs AA battery into the camera.

**Step 2:** Open the eco4life App, click "+", Select "All devices".



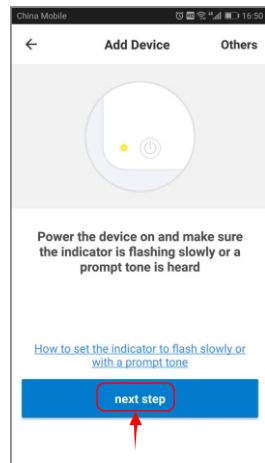
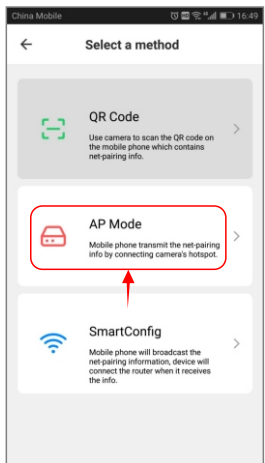
6

Select "Smart camera", and click "Others" in the top right corner.



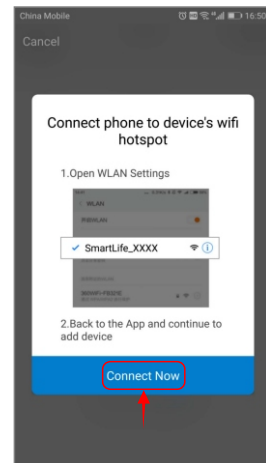
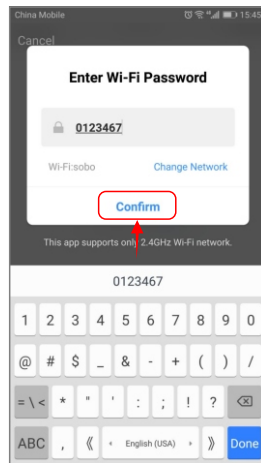
7

Select "AP mode", make sure the indicator light is slowly blinking. Click "next step".



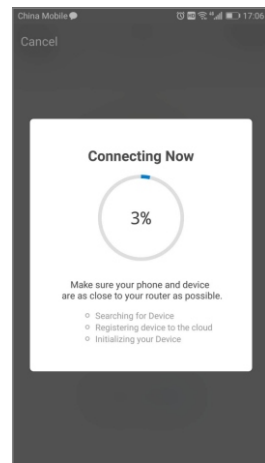
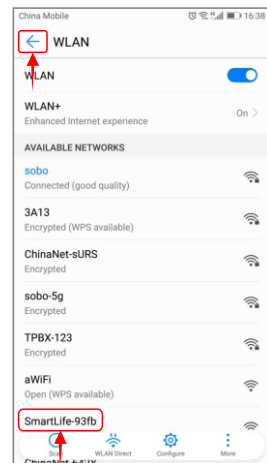
8

Select the Wi-Fi router, enter the WiFi password, and click "Confirm". Click "Connect Now".



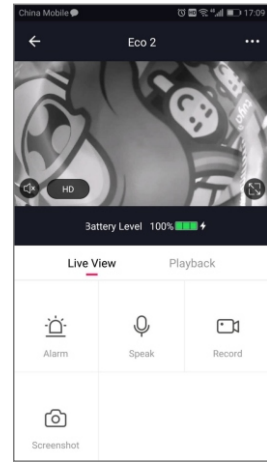
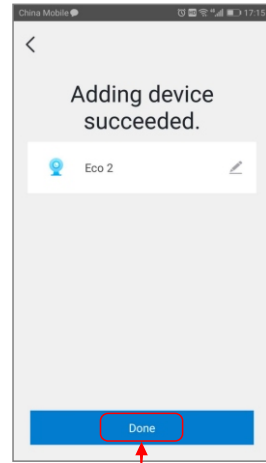
9

Click "Connect Now", and select the WIAN "SmartLife-93fb" to connect. Press the back arrow on the top left corner. Configuration of the smart mobile device.



10

Once you see the screen shot below, you have connected the camera successfully. Press "Done" and the camera will start working.



11

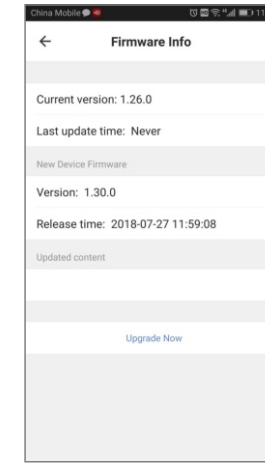
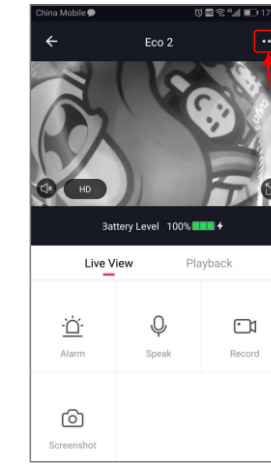
#### Firmware updates

KeenEye IP Camera supports firmware updates.

All new features, updates and software maintenance issues will be sent to the App.

Follow these steps to initiate firmware update:

Eco4life app → open the camera → ... → firmware info → check for firmware update



12

#### Troubleshooting

Q: I am having trouble getting my smartphone to connect with my smart devices.

A: Different phones may behave differently when connecting to eco4life smart devices. When experiencing difficulty, try to do the following steps;

1. Turn Wi-Fi & BLE off, then turn them back on, Try re-connecting.
2. Close the Eco4life App & restart the App. Try Re-connecting.
3. Uninstall the App & download it again
4. Make sure your wi-fi signal is 2.4GHz. Current eco4life devices only work on 2.4 GHz frequency

Q: I am having difficulty opening the camera.

A: If you are having trouble opening the camera, log out of the eco4life App. Log-In again and try re-opening the camera.

For more troubleshooting help, please visit [www.sonicgracehome.com](http://www.sonicgracehome.com) FAQ or send us an email at [cs@sonicgracehome.com](mailto:cs@sonicgracehome.com)

**Tips:** Important reminders before adding the device:

1. This camera only supports 2.4GHZ WiFi router, please make sure you are using a 2.4GHZ WiFi router.
2. Position the camera within the Wi-Fi signal range.
3. Please follow the instructions and make sure the password is entered correctly.
4. Only one camera with one registered account is allowed by the app. if a registered account has been added to the camera through the App, another User can no longer add the camera and register an account.
5. To register another account: Delete the first registered account from the App then another User may register and add the device through the App.
6. We recommend you to set the device WiFi connection by AP mode.
7. Make sure the alkaline battery installation is correct.
8. The KeenEye camera does not support cloud storage at the present time. Cloud Storage availability will be released through an online update in the near future.
9. Please restart the camera if you get any working error or failed connection.

13