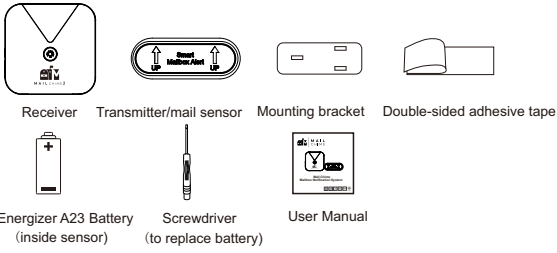


Mail Chime Mailbox Notification System



Package Contents



Parameters

| | |
|--------------------------------|---------------------------------|
| Voltage of receiver | AC 100V~250V |
| Working distance | 750 feet in open area |
| Volume range | 0~110dB, 5 levels (adjustable) |
| Optional chime qty | 10 pcs |
| Battery of mail sensor | Energizer A23 battery |
| Water protection (Mail sensor) | IP55 |
| Standby status of mail sensor | Arrow marks toward the Sky |
| Triggering way of mail sensor | Rotate it (>45°, from vertical) |
| Radio frequency | 433.92MHz |

Operation of Mail Chime 2

Mail chime tells you when mail arrives. The device consists of a receiver and a transmitter.

When your mailbox is opened, the receiver will chime & flash indicator (instant notification) to tell that you have mail.

Indicator light keeps flashing (continuous notification) until turned off by pressing the button in the middle of receiver. Then receiver will stay in standby mode and look for next mailbox opening.

You also can use your receiver with other types of devices we have such as driveway sensor, door sensor, motion sensor and doorbell button.

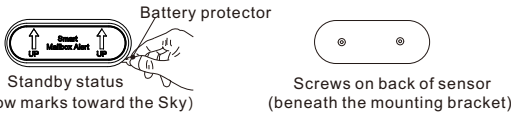
Please check our website or contact us at mail@mailchime.com if you would like to expand your system by adding additional sensors.

Installation

Plug Receiver: Plug receiver into an AC outlet in room, then it will work.

i Please choose an unobstructed outlet so that you can see the flashing indicator when mailbox opened and turn it off by button.

Activate the Battery: Pull and remove the battery protector in the transmitter. If it's too tight, loosen the screws in back cover a little.

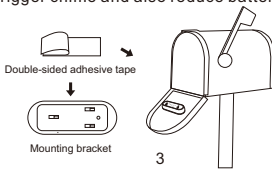


Test operation:
Hold the mail sensor with arrows pointing up and rotate the sensor to simulate your mailbox door opening and notice receiver chiming to confirm the operation.

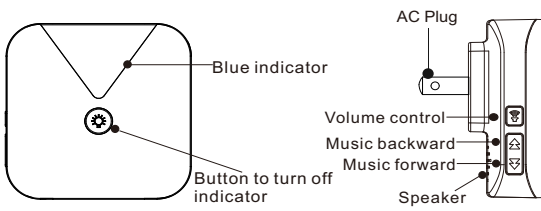
Install the Transmitter Bracket:
Wipe the mailbox door and then stick the transmitter bracket with double-sided adhesive tape onto mailbox's door. See diagram below.

Install the Transmitter:
Next attach the transmitter to the bracket. Make sure to mount it with arrows on transmitter pointing up towards the top of mailbox door.

i Mail sensor will keep sending signal if mailbox door left open. This may trigger chime and also reduce battery life.



Operating Instructions



1.Volume Adjustment
There are 5 levels of volume, range from 0dB (mute mode)~110dB. Press the Volume Control Button on left side of receiver repeatedly to get desired volume level.

2.Music/Chime Selection
Receiver has 10 music/chimes. Use Music Forward and Backward buttons to cycle and choose the desired one.

To set and activate the chosen music/chimes, follow step 3 on page 5.

3. Pairing Mail Sensor and Setting Music/ Chime

a) Set Receiver into "pairing mode" by the operations below.
* Press Volume Control button & Music Forward button simultaneously and quickly.

*Or press Volume Control Button for 5 seconds.

Then you will hear a "pairing alert chirp" and see fast **CONTINUOUS** LED flashing on the receiver--this indicates the pairing ready status.

b) Next, quickly trigger mail sensor **within 5 seconds** (see Note1) by rotating it (>45°) forward or backward. Receiver will play the music/chime you selected, which means that your operation is completed successfully.

i Receiver will exit pairing mode automatically without getting signal from transmitter after 5s has passed.

4. For Pairing Additional Mail Sensor

Just repeat Step 2 & Step 3a-3b for each additional tile sensor.

i Pair and **set only one sensor at a time** to avoid interference. Different or same music/chime can be set for each sensor.

5. For Pairing other type of transmitters

Receiver can work with 10 transmitters at most and compatible with emergency button, doorbell button, door sensor and motion sensor. Each one can be set same or different chime/music

Repeat Step 2 & Step 3a-3b to pair more transmitters with receiver. Different transmitters have distinct triggering ways.

i Continuous notification is only for mail sensor, other transmitters ONLY have instant notification.

Doorbell & emergency button: Press down button to trigger.

Door sensor: Put the main unit & magnetic stripe closely and then separate them to trigger.

Motion sensor: After entering learning mode, switch motion sensor on quickly; when indicator lights up, wave your hand quickly in front of the sensor to trigger.

6.Reset

Press the Music Control Forward button for 5 seconds until you will hear an "alert chirp" and see a **SINGLE** quick flash.

Pairing will be cleared up and receiver chime turn into default one. You can trigger transmitters to verify the reset before re-pairing.

Safety Precautions

a) Do not insert sharp objects or spill liquid on the product. This may cause accidental fire, electric shock, or failure.

b) Do not attempt to modify this device.

c) Keep this product out of reach of children.

d) To dispose this product properly, please follow the recycling process regulated in your area.

FCC Information

This device complies with Part 15 of the FCC rules. Operation is subject to the following two conditions:

- 1) This device ma not cause harmful interference, and
- 2) this device must accept any interference received, including interference that may cause undesired operation.

Troubleshooting

Light keeps flashing.

Reason: Receiver is doing continuous notification after mailbox opened.
Solution: Press the button in middle of receiver.

No chiming when mailbox opened.

Reason 1: No battery or low-power battery in transmitter.
The less power in transmitter, the shorter range.
Solution: Replace it with a new battery.

Reason 2: Transmitter/ receiver lost pairing due to some reason.
Solution: Re-pair receiver and transmitter per instruction on Page 5.

Reason 3: Receiver volume level is 0 dB.
Solution: Press volume control button to get higher sound.

Press down light button but indicator lights up again and receiver rings immediately.

Reason: Mailbox door is unclosed and receiver gets signal again.
Solution: Close mailbox door to recover standby status.

Receiver sounds itself without triggering.

Reason: Interfered by other device.
Solution: Reset the receiver and re-pairing the transmitters with it. Or change the installation place of receiver.



Thank you for your purchase of

Mail Chime ®

Proudly family owned USA based business for 20+ years.

If you have any questions or have any problem setting it up, please feel free to contact us:

www.mailchime.com
mail@mailchime.com
1-309-788-1982

We are honored to gain you as a customer and hope to serve you for a long time.