

WIRELESS MAGNETIC BACKUP CAMERA

Item No. 209441

User Guide



Thank you for purchasing the Wireless Magnetic Backup Camera. Please read this guide and store it for future reference.

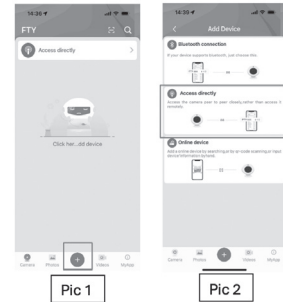
-1-

APP INSTALLATION

1. Search, download, and install FtyCamPro from App Store for iOS, or from GooglePlay for Android. After launching app, bypass ads by clicking banner at top of screen "FtyCamPro - Continue to app".



2. Before connecting, please ensure the Location Services on your phone is open. Click "+" to add a new camera [pic 1]. On the page "Add Device", click "Access directly" [pic 2] to set and connect your phone with camera directly.

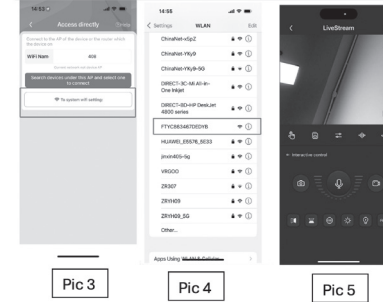


Pic 1

Pic 2

-2-

3. On the "Access directly" page, click "To system wifi setting" [pic 3]. It will automatically switch to your phone's WiFi connection page. Select the corresponding WiFi hotspot "FTY*****" and connect. Alternatively, you can navigate to your phone's WiFi settings and select "FTY*****" to connect [pic 4]. After the connection is successful, return to the APP, the device is added successfully [pic 5]. You could watch the real time video and control the camera in the video interface.

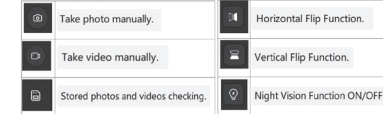


Pic 3

Pic 4

Pic 5

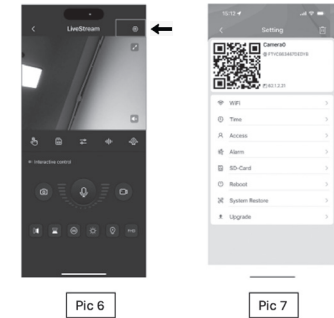
4. Icons and buttons on the video page:



-3-

CAMERA SETTINGS

1. Click the setting button [pic 6] to access the advanced configuration page [pic 7].

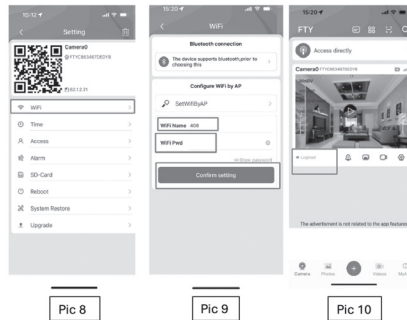


Pic 6

Pic 7

2. Configure the WiFi connection for the camera. Select "WiFi" option to go to the WiFi setting page [pic 8]. Input your WiFi Name (SSID), input the WiFi password, and press the "Confirm setting/Save" button [pic 9]. Once connected the "LoggedIn" message will display [pic 10]. Note: The camera will only connect with 2.4Ghz band WiFi. Please ensure to connect camera with your 2.4Ghz available router SSID.

-4-

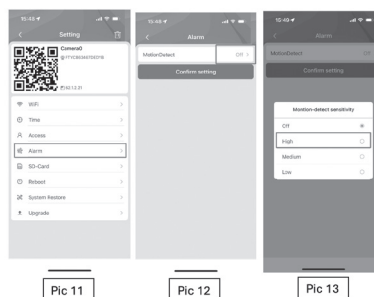


Pic 8

Pic 9

Pic 10

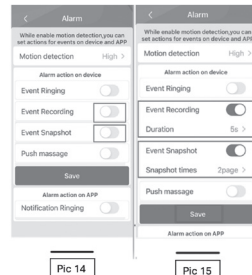
3. Alarm configuration: Enable or disable motion detection alarm. Select "Alarm" option to go to the Alarm setting page [pic 11]. Open the "Motion Detection" Button [pic 12], choose "Motion-detect sensitivity" with "High" or "Low" option [pic 13]. Choose "Event Recording" with "Duration" "5s" or "10s" or "15s" or "20s" and choose "Event Snapshot" with "1page" or "2page" etc. Press "Save" button, [pics 14 & 15]. This allows the camera to capture and store videos & pictures automatically.



Pic 11

Pic 12

Pic 13

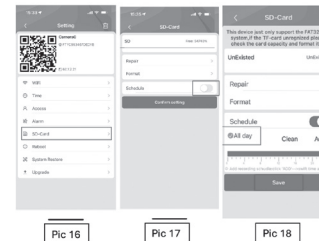


Pic 14

Pic 15

-6-

4. SD Card recording settings. Select "SD-Card" option to go to the SD Card recording setting page [pic 16]. Open the "Schedule" button [pic 17], choose "All day" option, and press the "Save" button [pic 18]. This allows the camera to record videos and store in the SD Card automatically.



Pic 16

Pic 17

Pic 18

Basic Settings and Indicator Status:

When a new camera or existing camera is installed with a new router, please reset the camera to factory default settings by doing the following. Go to camera settings and select "Reset". At the Prompt, click OK to confirm. Then you can configure the camera using the previous steps.

Indicator Status:

1. In AP mode after booting, the blue indicator is always on and the red indicator is the USB power indicator. The red indicator goes out after camera is fully charged.
2. When configuring WiFi routing, the red indicator is normally on, while the blue one flickers rapidly. After a successful configuration, the blue indicator is normally on. [Please confirm whether the WiFi password is correct if the blue indicator keeps flickering rapidly]
3. The red indicator is a charging indicator, and it will automatically go out after the camcorder is fully charged.

Note: Please inspect the following items if the App keeps prompting failures:

- Before configuring the WiFi network, the camcorder indicator does not flicker slowly or it is not started.
- The phone fails to connect to the camcorder AP, and it is required to connect the phone to the AP hotspot of the camcorder.
- An ordinary router is compatible, but the public router fails to be compatible because it is required to logon for authentication.
- Avoid any mistake of network name, password, and UID.
- Chinese WiFi names, passwords, and special symbols are not compatible currently.
- 5G WiFi signals are not compatible.

FAQ

- Q:** Why does the APP fail to detect the camcorder/match a network?
A: Please ensure the device is correctly connected and inspect whether the APP operation is restricted.
- Q:** Why does the camcorder keep asking me to input user name and password? Or why does it prompt incorrect user name?
A: The default password is admin. If you forget your user name and password, please reset it to factory settings to get the default user name and password.
- Q:** How can I reset the camcorder to factory settings?
A: Press the reset button in the settings.
- Q:** Why is the image not clear?
A: Remove the protective film for the lens. If it's still fuzzy, you can rotate the lens and focus to get clear images.

-8-

-5-

-7-