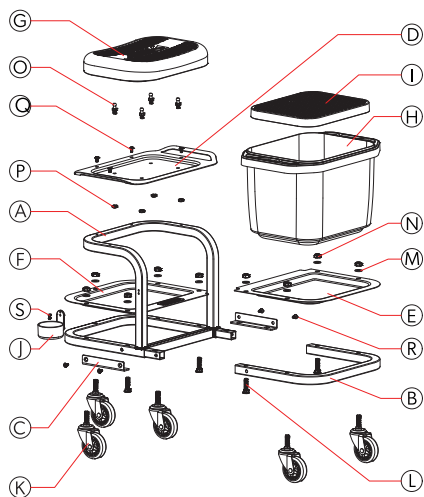


ROLLING CAR WASH STOOL



Needed tools: 17mm wrench, Phillips head screwdriver

Read and understand this entire manual before assembling, installing, operating, or servicing this product. Failure to follow all warnings and instructions may result in property damage and/or serious injury.

⚠ This Safety Alert Symbol indicates caution, warning, or danger. Failure to obey a safety warning can result in serious injury to yourself or others. To reduce the risk of injury, fire, or electric shock, always follow the safety precautions.

📖 Save these directions for future reference.

PRODUCT SPECIFICATIONS

- Dimensions: 24.5" x 14" x 18"
- Weight of product: 23.5 lbs (11kgs)
- Maximum weight capacity for Unit: 350 lbs (159kgs)

MAINTENANCE

When servicing, use only identical replacement parts.

To clean, wipe down with dry or slightly damp cloth. Do not use solvents, as this can damage the upholstery. Be sure to wipe off oil and other fluids when finished using.

SAFETY

⚠ CAUTION: Failure to read and follow all warnings below could result in property damage or personal injury. Always use care when working with tools.

ASSEMBLY PRECAUTIONS

Assemble only according to these instructions. Improper assembly can create hazards.

Use personal protective equipment including ANSI Z87.1 approved safety goggles and heavy-duty work gloves during assembly.

Keep assembly area clean and well lit.

Keep children, pets, and bystanders out of the area during assembly. Distractions can cause you to lose control of tools, injuring yourself or others.

Stay alert, watch what you are doing, and use common sense when operating a power tool. Do not assemble while you are tired or under the influence of alcohol, drugs, or medication. A moment of inattention while operating tools may result in serious personal injury, shock, or fire.

Weight capacity and other product capabilities apply to properly and completely assembled product only. Do not use if incompletely or improperly assembled.

USE PRECAUTIONS

NOTE: This product is not a toy. Do not allow children to play with or near this item. Store out of reach of children.

Use the stool and accessories as intended. Product is intended for seating only. Use of the stool for operations different from those intended could result in a hazardous situation.

Inspect before every use; do not use if parts are loose or damaged.

Do not exceed weight capacity of 350lbs (159 kg).

Be aware of dynamic loading! Sudden shifts in the load may briefly create excess load, which may result in product failure.

The warnings, cautions, and instructions discussed in the instruction manual cannot cover all possible conditions and situations that may occur.

It must be understood by the operator that common sense and caution are factors that cannot be built into this product but must be applied by the operator.

⚠ WARNING: Do not stand on seat or stool. Product is intended for seating only.

INSTRUCTIONS

1. Install Metal Seat Plate (D) to Frame (A) and secure with Phillips Head Screws (Q). Install the 2-in-1 Cushion and Removeable Knee Pad (G) by setting it over the Ball Head Screws (O) on the Metal Seat Plate.
2. Assemble Frames (A) and (B) by pushing them together. Ensure that the square holes on Frame (B) are facing down.
3. Secure Frames (A) and (B) with Bracket (C) using Phillips Head Screws (R).
4. Tray (E) has 4 holes and installs to Frame (B). Tray (F) has 5 holes and installs to Frame (A). Using Bolts (L), Washers (M), and Nuts (N) secure the Trays to the Frames with the 4 holes closest to the center with the Nuts and Washers on top.
5. Attach the 5 Casters (K) using Washers (M) and Nuts (N). DO NOT OVERTIGHTEN.
6. Attach the Cupholder (J) to Frame (A) using Phillips Head Screws (S).
7. Bucket (H) rests on top of Tray (E). Insert Dirt Guard (I) into the Bucket to trap dirt when washing your vehicle.

TWO YEAR LIMITED WARRANTY (UNITED STATES ONLY)

This product is to be free of defects in materials or workmanship for two (2) years from the date of purchase for the original purchaser. The manufacturer is not responsible for any consequential or incidental damages arising from the breach of this or any other warranty, whether express, implied, or statutory. Some states do not allow the exclusion or limitation of consequential or incidental damages, so the above exclusion may not apply to you. This warranty gives you specific legal rights, and you may also have other rights which vary from state to state. Any attempt to self-repair the product will void the limited warranty. Valid only in the USA.



© 2022 Delk Industries, Inc. All Rights Reserved. The DELK™ and URBAN TRANSIT™ Trademarks are property of Delk Industries, Inc.