

MC0594

Firming Gloves

USER MANUAL

PLEASE READ CAREFULLY THIS INSTRUCTION BEFORE USING THE PRODUCT

PRODUCT INTRODUCTION

Muscle Electrical Stimulation Gloves is an alternative to the cosmetic apparatus. You can achieve muscle contraction in your face and body with a simple touch of your hand.

With gloves, you can easily process any part of your body and face, even affecting areas that are difficult to access for ordinary devices. The highly conductive material of which the gloves are made provides maximum microcurrent efficiency.

The gloves are cordless they are more convenient and efficient to use

THE SET INCLUDING

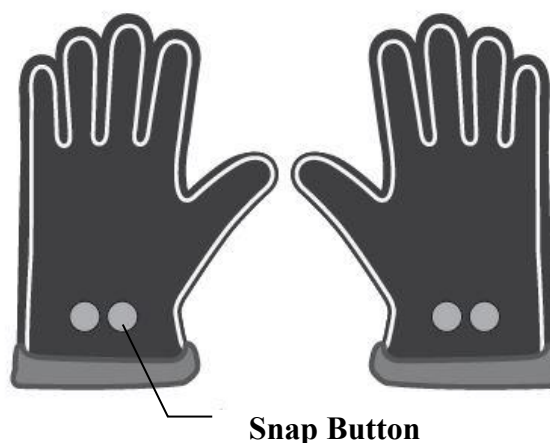
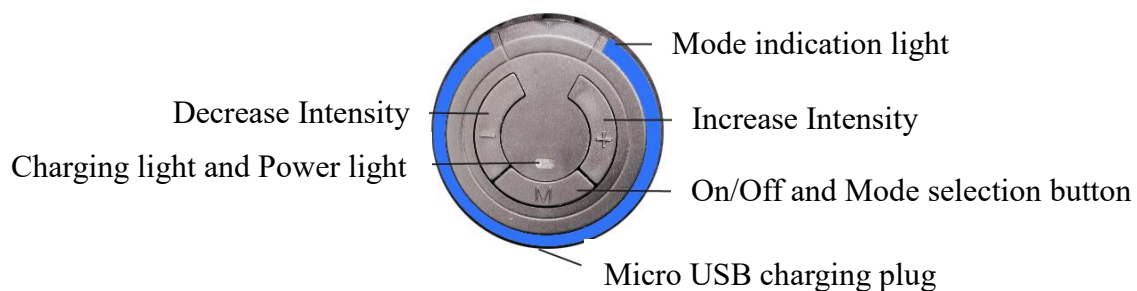
- A. 1 pair of eGloves
- B. 2 electric devices
- C. 1 twin head charging cable



PRECAUTIONS FOR USE

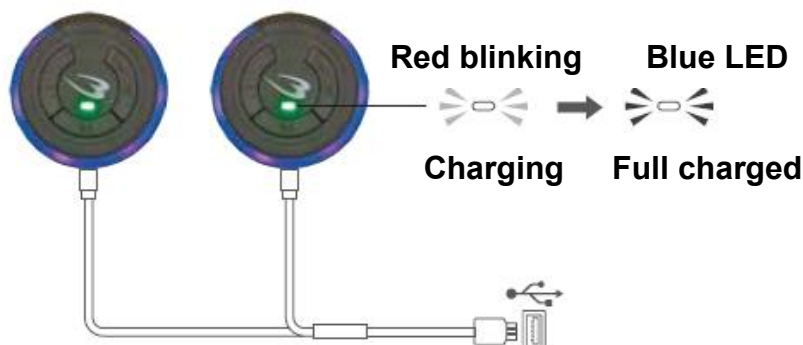
- When you are not using it, turn the power off before removing it from your face
- The device is not waterproof. Do not use in a location that is high humid or where water may get on it.
- Never use damaged, deteriorated or dirty gel pads, otherwise it may make you feel pain/ burned.
- Remove any jewelry or accessories such as necklaces, belts and pierced earrings when using this product. Not doing so may result in an accident, injury, or damage.
- Keep electronic devices, such as wristwatches, pedometers, cell phones, etc., away from your body during use. Not doing so may result in malfunction of the electronic device.
- Clean the face before use.
- The product is not waterproof. Do not use in a location that is high humid or where water may get on it.

KNOW YOUR PRODUCT








CHARGE THE BATTERY

1. Take out the charging cable and plug the micro USB head into the bottom of the both devices, the other end of USB head need to plug into a USB Adaptor with 5V 1A.
2. Then the charging light will light up in red. Charge for 20 mins, then it will turn into blue LED.

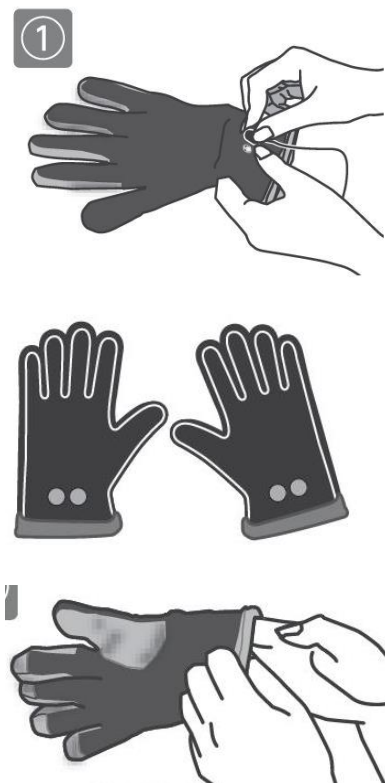


Different Mode Introduction

Mode	Mode 1	Mode 2	Mode 3	Mode 4	Mode 5
Color of LED	green	pink	yellow	Blue	white
					
Waveform Sensation	1 sensation	4 changes in sensation	4 changes in sensation	11 changes in sensation	11 changes in sensation

How to use

1. Connect the device on the gloves with the magnet snap button.
2. Then wear the gloves, press and hold the mode button for 3 seconds to turn on the device, the indicating light will be light up
3. Then you can select the <M> button to select the suitable mode that you want to treat. There are a total of 10 EMS intensity levels (1 to 10). Then press again the <+/-> button to select the intensity of the massage level.
4. Then touch your body where you want to massage.
5. Suggest increase the intensity by gradually, in order to feel which intensity level is suitable for your need.
6. The device with 20 minutes auto timer, once the intensity selected, the device will be auto count down, and will be auto off after 20 minutes.
7. You can off the device anytime during using by press and hold the <M> key for 3 seconds till the power light is off.



ATTENTION:

- Use the weakest level when first use. Then adjust the intensity level slowly up to your desired level.
- When the battery is going weak, the EMS impulse will get weaker. If the battery is running out, the power light will be OFF or all buttons do not work well when using properly. Replace the battery with a new one.

MAINTENANCE

- Always keep clean the main device, by using a soft cloth to clean the surface of the unit.
- Do not spill liquid on the device or immerse the device in water
- Keep the product in a cool, dark place but NOT hot or humid location
- Do not clean with chemicals
- Keep out of the reach of children and store away from pets
- Gloves remove the device and clean with a damp cloth, let it dry by natural blow.



PRODUCT SPECIFICATION

Product Number	MC0594
Initial Curve Shape	Biphase Square-wave pulse
Max. EMS Current	50mA
Pulse Frequency	1 ~ 33.3Hz
Range of Output Voltage	18.2V – 61.2V Load Resistance 1KΩ
Li-ion battery capacity	3.7V 60 mAH
Charging Voltage	5V USB 1A
Treatment Time	20 minutes auto off
Intensity	Adjustable from 1~10 Levels of each mode
Mode	5 modes
Operation Conditions:	10°C~40°C (50°F~104°F) ; 30~85% RH
Storage Conditions	-10°C~50°C (14°F~122°F) ; 10~95% RH
Charging time	20 mins can last for 1 hour

TROUBLE-SHOOTING

Problem	Cause	Rectification
No Led Light Up	- Low battery	- Charge the battery
With Led Indication Light But No Feeling	- Device is not snapped on gloves firmly - Intensity level at 0 - Microprocessor hang up	- Check that device is connected firmly with both magnetic snap button of the electrode gloves - Push M button to turn on the device and press + to increase intensity - Reset by turn off the device and turn it on after 1 min.
All Button Does Not Work Well	- Microprocessor hang up	- Reset by turn off the device and turn it on after 1 min.
Device Off Automatically	- Low Battery	- Charge the battery

