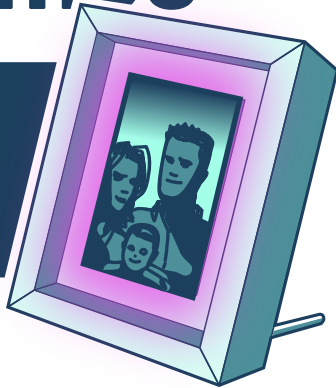


# Friendship Frames

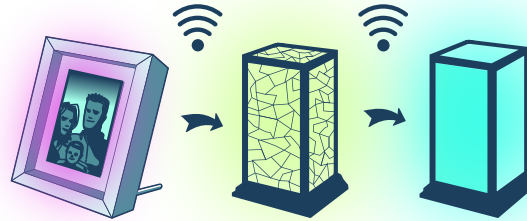
POWERED BY  
FILIMIN

## QUICK SETUP GUIDE



## What are Friendship Frames?

Friendship Frames connect you with those you love, no matter where they are in the world, with a simple touch.



Friendship Frames are the picture frame version of our Friendship Lamps. You can connect with your loved ones whether they have Friendship Lamps, Friendship Frames, or even both!

## 1. Remove Inner Tray

Bend back the metal tabs on the back of the frame and remove the inside tray.



Then remove back pane of glass.

## 2. Place Photo in Frame

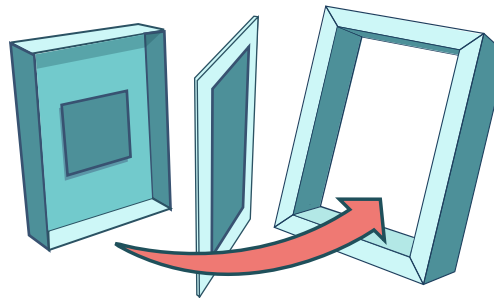
Replace sample photo with photo of your loved ones and secure by peeling the attached adhesive squares.



Your photo may be mounted in either "Portrait" (vertical) or "Landscape" (horizontal) but make sure to line up the photo with the black matte on the glass.

## 3. Replace Inner Tray

Replace glass and tray inside of frame.



Bend metal tabs back down to secure.

## 4. Plug In Frame

If you would like your Friendship Frame to tilt back on the table, just insert the wooden included wooden dowels into the holes on the back.

