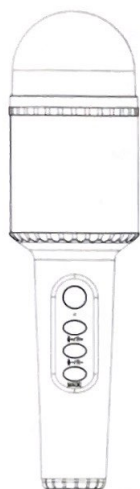


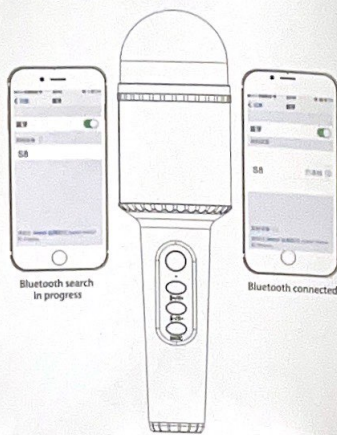
Instruction Manual



— 1 —

Wireless karaoke

1. Turn on the power and press and hold the start button for 3 seconds.
2. Bluetooth connection: open the Bluetooth of the mobile phone, click for pairing connection, and a prompt tone appears indicating that the connection is successful.
3. Adjust the voice: adjust the microphone volume and reverberation intensity to a reasonable position.

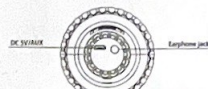
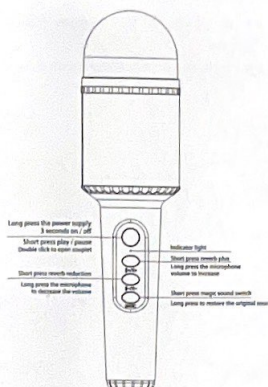


Bluetooth search in progress

Bluetooth connected

— 2 —

Product view



— 3 —

Key operation

1. Key operation
 - 1. "O"
 - Long press: 3 seconds on / off
 - Short press: one play pause
 - Double click: turn on microphone pairing
 - 2. "M"
 - Short press: reverb volume plus
 - Long press: increase microphone volume
 - 3. "M"
 - Short press: reverb volume decreases
 - Long press: microphone volume decreases
 - 4. "M"
 - Short press: magic sound switch
 - Long press: turn on / off original sound cancellation

2. Wireless karaoke

1. Turn on the power and press and hold the start button for 3 seconds.
2. Bluetooth connection: open the Bluetooth of the mobile phone, click for pairing connection, and a prompt tone appears indicating that the connection is successful.
3. Adjust the voice: adjust the microphone volume and reverberation intensity to a reasonable position.
4. Start karaoke

3. Mobile karaoke

1. Open the Karaoke software in the mobile phone, such as national karaoke, cool dog music, etc., select your favorite songs, and start recording songs according to the above singing method.
2. Debug and save the song, and then follow the instructions of K song software

Product technical parameters

- ◆ output power: 5W
- ◆ reverberation mode: sound effect reverberation
- ◆ battery capacity: high performance battery, with a service life of about 5 hours
- ◆ charging power supply: DCSV
- ◆ maximum sound pressure level: >115dB 1KHz TOH <1%
- ◆ frequency range: 100Hz-10KHz
- ◆ power supply mode: DC Charging and built-in battery

— 4 —

Service and warranty

Warranty service terms:

1. If the product has any functional problems, it can enjoy warranty service for 3 months
2. Man-made damage, falling, man-made scratching, and those without warranty card are not included in the warranty scope.
3. The customer must fill in all necessary information (such as customer name, address, telephone number, purchase date, etc.)
4. We are responsible for the maintenance costs incurred during the warranty period, and we will not be responsible for the freight and other costs.
5. The warranty service needs a warranty card and can be guaranteed according to the requirements, otherwise it will not be guaranteed.
6. This product complies with the radio management regulations and technical standards of the people's Republic of China.

Reminder

This product is sold without a power adapter. If the power adapter is used for power supply, you should purchase and use the power adapter certified by CCC and meeting the standard requirements. The battery shall not be exposed to the sun, fire or similar overheated environment. If the battery is not replaced properly, there will be explosion risk. Only the same type of battery can be replaced.

Product model: _____

Customer Name: _____

Contact number: _____

Customer address: _____

Date of purchase: _____

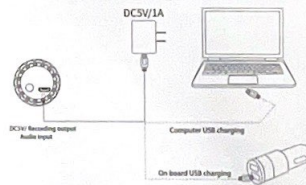
— 5 —

Common problem handling

1. If the blue power indicator does not light up after power on, please check whether the microphone is fully charged, or connect the microphone to the 5V/1A power supply for charging. The charging time is about 1.5-2 hours.
2. There is no sound in the microphone. Maybe the power is not turned on, the mode is incorrect, or the volume is not adjusted. Please adjust the microphone volume.
3. If the microphone does not reverberate, the reverberation switch may be turned off. Please turn on the reverberation switch.
4. If the microphone is noisy, it may be due to ambient noise, signal interference, incompatibility of mobile phone applications, etc., please re debug the recording cable. If there is still a fault, please try to replace the recording cable.
5. If the Bluetooth playback is interrupted, it may be because the Bluetooth is too far away, or there are obstacles between the mobile phone and the microphone, affecting the signal transmission. Please get close to the connected mobile phone and avoid the obstacles.
6. If the Bluetooth accompaniment sound is low or no sound, it may be because the volume of the mobile phone is too low and the microphone volume is small. Please adjust it to the maximum. The low sound of some music files may also lead to the low sound of the microphone.
7. If Bluetooth cannot be connected, it may be because the distance is too far, there are obstacles, or it is connected by other mobile phones. Please approach the mobile phone to avoid obstacles and disconnect the connected mobile phone.
8. If it cannot be charged, check whether the charger is normal and whether the red indicator light of the charging port is on when the microphone is charged.

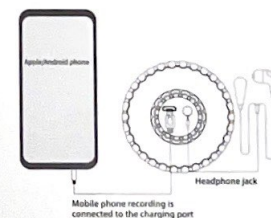
— 6 —

Charging connection diagram



— 7 —

Mobile phone connection diagram



— 8 —