

Multifunction Digital Altimeter

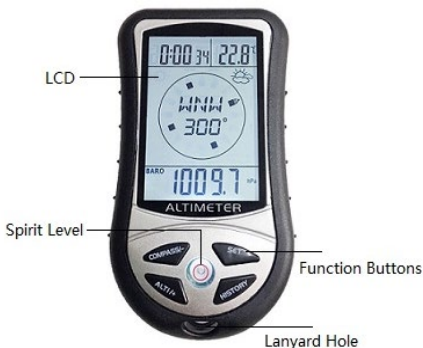


8 IN 1 DIGITAL ALTIMETER USER MANUAL

Digital Altimeter, with digital barometer, digital compass, weather forecast, clock, calendar, thermometer. The device is based on the technology of electronic bearing sensor and air pressure sensor.

The digital altimeter is designed for outdoor use, the detachable string makes the digital compass to a perfect hand-carry device for various outdoor activities.

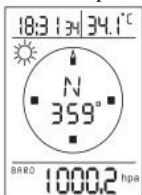
It will give you backlight when you press any button in any time.



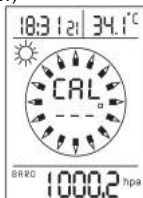
Two AAA batteries in the battery compartment

Calibration for digital compass

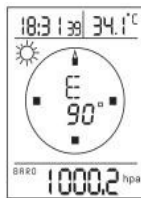
1. Once batteries are placed, the LCD will full display, press [COMPASS/-] button, it will show a wrong direction degree on the LCD.
2. Press and hold [COMPASS/-] button for 2 seconds, it will show 'CAL' on the LCD, turn the device 12 circles, press [Compass/-] button, the correct direction angles show on the screen, the calibration process completed.
(Note: For more accurate results, the air bubble in the spirit level should be kept inside the circle during the calibration procedure.)



Full display,
press [Compass/-]



Long press
[Compass/-]



Turn the device
12 circles, press
[Compass/-]

3. At compass mode, it will exit compass function, if you press [ALTI/+] button.

Note: the device only needs to adjust the compass function when it is used for the first time. After that, there is no need to made adjustment steps. It will need to be re-calibrated unless it is used for a long time or if the compass data is inaccurate due to strong magnetic field interference.

Setting step:

1. Press and hold [SET] button for 2 seconds, 24Hr will flash on the top left corner, press [ALTI/+] button to select 24Hr or 12Hr;
2. Press [SET], hour flash, press [+] or [-] to set hour;
3. Press [SET], minute flash, press [+] or [-] to set minute;
4. Press [SET], year flash, press [+] or [-] to set year;
5. Press [SET], month flash, press [+] or [-] to set month;
6. Press [SET], date flash, press [+] or [-] to set date;
7. Press [SET], temperature unit °C flash, press [ALTI/+] button to select °C or °F;
8. Press [SET], barometer unit HPA flash, press [ALTI/+] button to select HPA, inHg or mmHg;
9. Press [SET], altitude unit M flash, press [ALTI/+] to select M or FEET;
10. Press [HISTORY] button to confirm and exit the setting, press [SET] to switch display mode (clock or calendar).

Altimeter

The height value displayed on the screen is the sea level of the current location.

press [SET] and [ALTI/+] at one time, The altitude value will flash, press [ALTI/+] to increase the reference altitude value, or press [COMPASS/-] to decrease it.

At setting process, it will exit setting automatically if you press [HISTORY] button or don't operate it in ten seconds.

Relative Altitude

You can use this device to monitor the ascending or descending altitude from one certain location or the relative altitude for any mountain or object etc.

In the altimeter mode, press and hold [ALTI/+] button for 2 seconds to clear the altitude value to 0^M, then to ascend or descend, the relative altitude from that location where you clear will display in the lower row of the screen. The negative value means that the current altitude is lower than the previous relative altitude; The positive value means the current altitude is higher than the previous relative altitude.

Press [ALTI/+] button to switch the use of altimeter and barometer.

Barometer

The air pressure value displayed on the screen is the air pressure at the current location.

Press [ALTI/+] button to switch the use of altimeter and barometer.

Weather Forecast

Apart from detecting the altitude, barometer also helps to forecast the weather for the forthcoming 12 to 24

hours basing on air pressure changes. The effective range is 30-50km.

1. The weather forecast could be affected by oceanic or continental weather phenomenon, It is not responsible for any inconvenience caused by an Inaccurate forecast. So, please refer to the weather forecast from the local weather station.
2. The weather forecast is meant for the next 12 to 24 hours. It will not reflect the current forecast.

History Altitude Record

Press [HISTORY] button, you can view record of history altitude and air pressure record. It will display the most previous record in this mode, then you can press [ALTI/+] or [COMPASS/-] button to forwards or backwards view history record. It can save most 256pcs records, the records' distance is five minutes, and you can change the distance time from 1-60 minutes if you press and hold [HISTORY] button for 2 seconds.

Save power design

When you don't want to use the device, you press and hold [SET] button for 5 seconds, the device will stop all display enter into dormancy mode. And then you press any button, it will resume previous display.

Low battery Warning

When the battery voltage is low, a battery symbol will flash on the screen of the device, indicating that the battery needs to be replaced.

Backlight

In any mode, it can give you backlight for 5 seconds that you press any button; and if the backlight is opened, you press any button, it can extend the backlight time for 5 seconds.

Default Value

1. Default clock : 0 : 00 ;
default display: 24 hours system
2. Default date : 2018-1-1,
display order is : date-month-year from left to right
3. Default temperature unit : °C
4. Default barometer unit : HPA
5. Default altitude unit : M
6. Default history record distance : five minutes