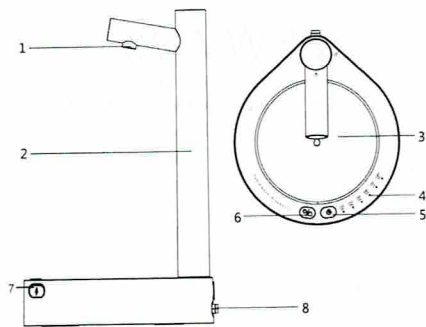
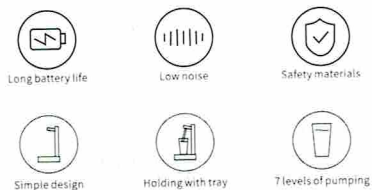


Production Introduction



- | | | |
|----------------------|-------------------------------------|--------------------|
| 1. Water outlet port | 4. Water level light | 7. USB charge port |
| 2. Water outlet pipe | 5. Water level keypad | 8. Water intake |
| 3. Cup holder | 6. Power keypad/Water outlet keypad | |

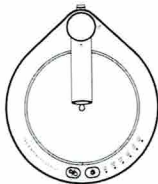
Selling Points



Product Parameters

Model :ZSW-C09
 Product Material : ABS
 Rate Input : 5V=0.8A
 Battery Capacity : 1800mAh
 Power Jack : TYPE-C
 Product Weight : 265g
 Executive Standard : GB 4706.1-2005
 Dimension : 120X137X235mm

Product Instruction



Long press the water outlet button: Power on/off (Pumping gear is default to last time setting when power on, all LED lights will be lighting together, also battery level is showing, all lights flash 3 times and then turn off)

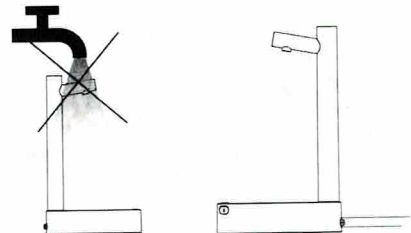
Single click the water outlet keypad: Start Pump/Stop Pump

Single click the water level keypad: Shift mode setting (Add 1 level with single press in cycle, there are total 7 levels and corresponding light are: 100ML, 200ML, 300ML, 500ML, 700ML, 1000ML and unlimited flow, each gear has a corresponding light on, all LED light on when unlimited flow)

Low battery reminder: When battery is lower than 10%, the light flashes quickly to remind charge on time (lighting reminder of corresponding gear)
 Light is flash when charging and lights up after fully charged.

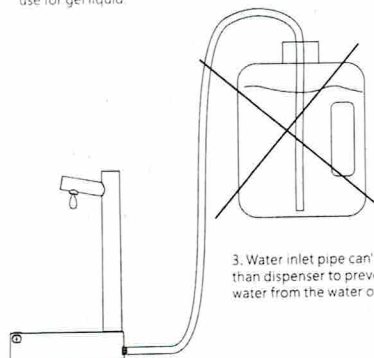
After standby 2 minutes, machine is going to sleep and turn off the light, at this time, press any keypad to wake up and showing current gear light.

Specail Instruction



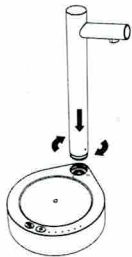
1. This machine can only be used for pure water at 5-40 degrees celsius, please don't use for gel liquid.

2. This machine is only prevent to spray water of life, please don't wash with water.

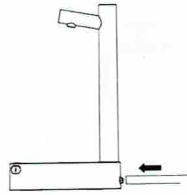


3. Water inlet pipe can't be higher than dispenser to prevent dripping water from the water outlet.

Installation Steps



1. Water outlet align to this icon
then press down and rotate to
the left to this icon is OK.



2. Install the bottom of water
pipe and insert it into the
corresponding position.

Warranty Card



1. Since the date of purchase, if there is no man-made product failure, we will provide a half year's free warranty.
2. Below circumstances are not included during warranty period:
 - a. Failures or damages that are caused by unauthorized disassemble and repair.
 - b. Failures caused by improper use, such as liquid injection, external force extrusion, falling damage etc.
 - c. Damage caused by natural disasters or irresistible factors.
3. Please keep this warranty card well. If you can't provide this card, it will be deemed that the product has exceeded the warranty period, certain materials cost and repairing cost will be collected.

ZSW-C09

Smart Table Water Dispenser User Ma

Thank you fou choosing this product
Please read this manual carefully before using t