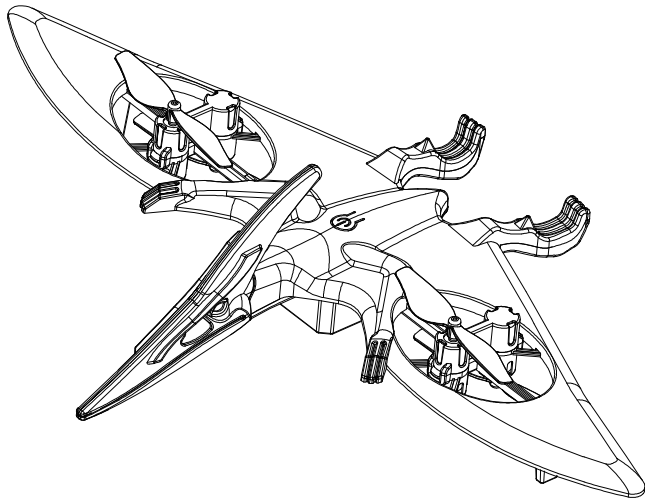


AGES 14+



DINO DRONE R/C ITEM# 17022 INSTRUCTION MANUAL

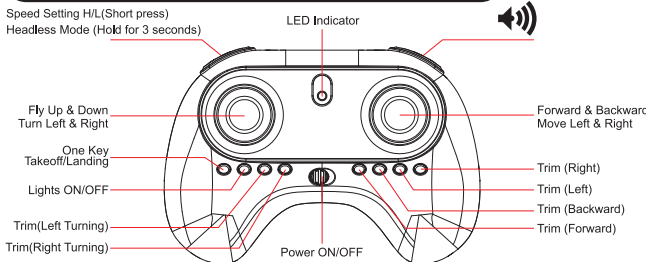
IMPORTANT INSTRUCTION

1. This product is not only a toy, but a precision flying object with integrated mechanics and electronics. This product requires prior knowledge and expertise in aerodynamics, hand eye coordination and remote control operated products/games. This product needs to be correctly assembled and paired with remote control to avoid any incidents and accidents. The product owner should operate and control in a safe manner. Please note that Jupiter Creations, Inc is not liable or responsible for any accidents that may result in injury, damage or loss of property. We urge you to play responsibly, handle and fly with care.
2. This product is suitable for users that have prior operating experience or users no less than 14 years of age.
3. The flying space suggested is a open space that is legally viable for a remote control drone/flying toy. Do not operate around people. Make sure the area you are using for take off is clear of obstacles and people.
4. If you encounter any problems while operating or repairing this product, kindly contact us at www.jupitercreations.com.

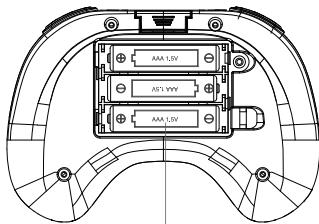
BATTERY REPAIR & MAINTENANCE

1. Battery should be put in the dry or well ventilated area with a room temperature of about 18-25 C .
2. In order to prolong the battery life, please avoid repeatedly charging or excessive discharging.
3. If the battery needs to be stored away for while, please charge the battery first. The battery needs to be charged to atleast 50-60% of its capacity.
4. If you do not use it for more than a month, it is highly recommended that you need to check the battery voltage every month to make sure the voltage is no less than 3V. Otherwise please do not follow step NO. (3).

GET TO KNOW YOUR TRANSMITTER

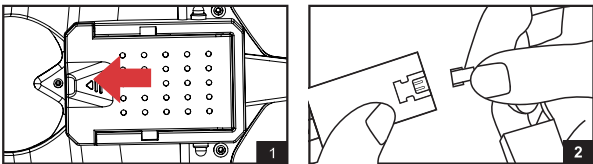


Battery installation

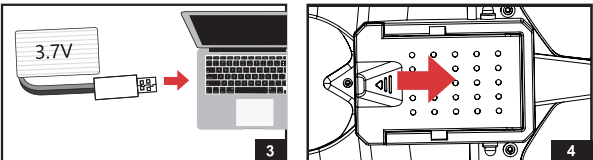


1. Different types of batteries or new and used batteries cannot be mixed.
2. Batteries must be inserted with the correct polarity.
3. Exhausted batteries need to be removed from the toy.
4. The supply terminals cannot be short-circuited.
5. Open the battery cover with the screwdriver.

HOW TO CHARGE QUADCOPTER BATTERY



1. Pull the battery out of the quadcopter.
2. Take out the USB charging cable and insert into the battery power port (Make sure the ports are connected correctly).



3. Connect the USB charger to the computer USB port, then connect the charging socket to the lithium battery. While charging, the LED will light up; when fully charged, the LED will turn off.
4. Reconnect the battery to the quadcopter.

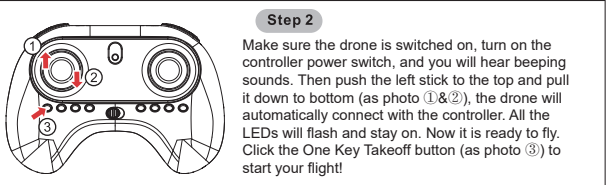
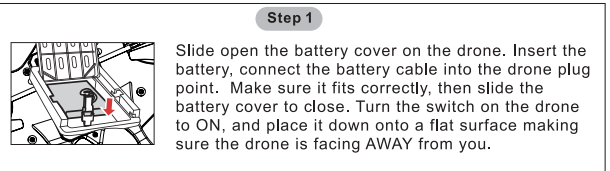
Charging time: about 70-90 minutes.
Flying time: about 5-7 minutes!

Note! Always charge the battery by using the USB port from your computer and not a telephone or tablet wall charger. Charging by using power socket can cause fire! Always keep watch while charging.

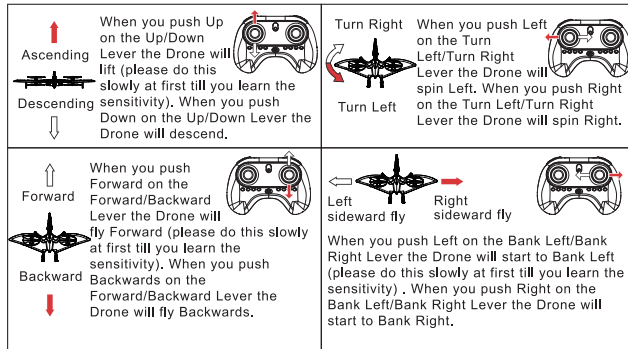
CAUTIONS WHEN CHARGING

1. When charging, please put this product in a dry or well ventilated area. Keep it away from any heat sources or explosive products.
2. Before charging, remove the batteries from the quadcopter. Charging process should be supervised by an adult to prevent an accident.
3. After flying, please do not charge the battery if the surface temperature is still not cool. Otherwise it may cause the battery to swell, this could be a fire hazard.
4. Please make sure that you use the original USB charging cable provided. If the battery has been used for a long time, or appears to be swollen, please replace them.
5. If you do not play with the quadcopter for a long time, please remove the battery.

READY TO FLY YOUR QUADCOPTER

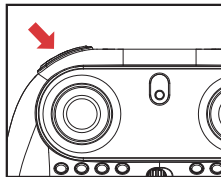


FLIGHT CONTROL



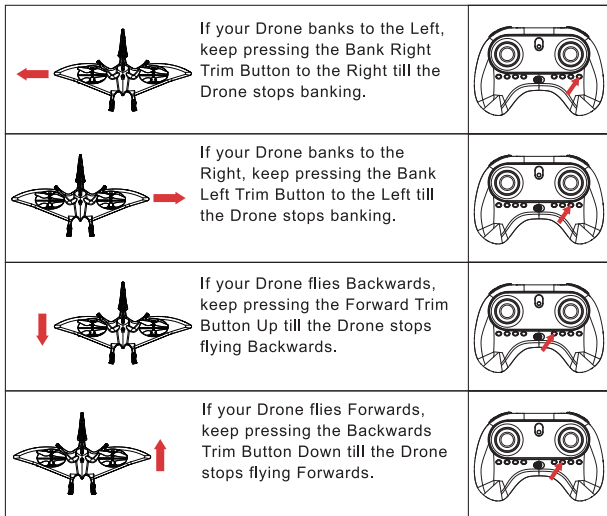
SPEED CONTROL

After connecting with the controller, the drone is in low speed mode. Press the Speed Setting button, when you hear the sound of "Di-Di", the drone switches to high speed mode. Press the button again, when you hear the sound of "Di", it switches to low speed mode.

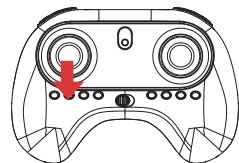


FLIGHT ADJUSTMENT SECTION

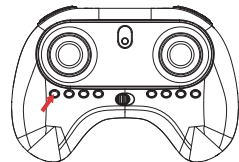
When you lift your Drone into the air, without the use of any control levers, it should HOVER in one spot. If it doesn't, you can follow the instructions below to bring your Drone back to a perfect HOVER.



HOW TO LAND YOUR QUADCOPTER



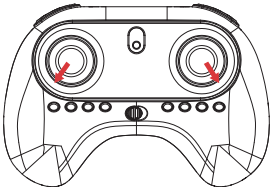
Option 1: After playing, control the drone to the ground and keep the throttle at the lowest position for 3-4 seconds or until the motor stops working. Finally switch off the transmitter and drone.



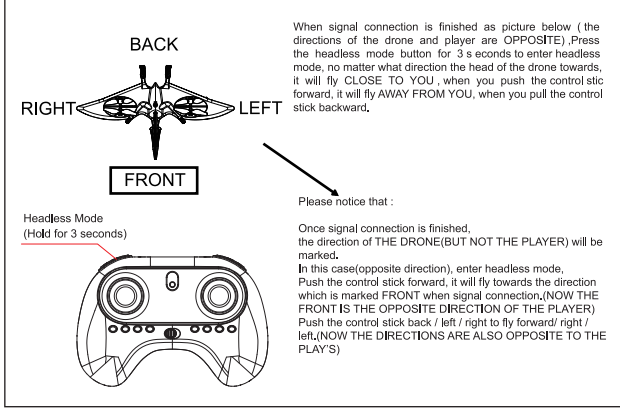
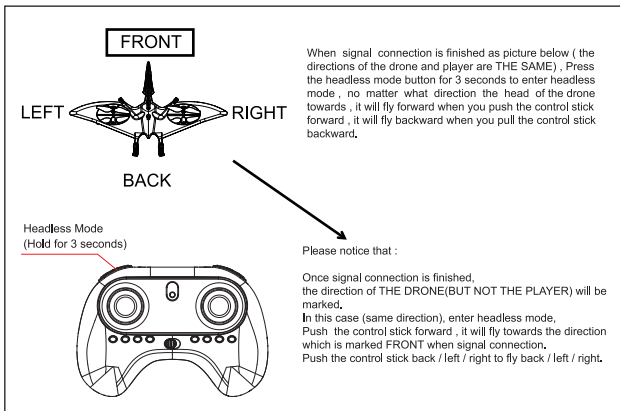
Option 2: For a fast turn off, press the one key landing button, the product will slowly land on the ground and motor will shut down.

RESETTING THE DRONE:

Pull the left stick to lower left quarter, and pull the right stick to lower right quarter (as photo), you will hear beeping sound and the LED lights begin to flash and stay on, the gyro will auto reset and keep better balance. Please notice that the drone should be put on the flat surface.



HEADLESS MODE



BLADE REPLACEMENT INSTRUCTION

The quadcopter comes with replacement blades, if the originals are broken or badly damaged. It is extremely important to use the correct blade (A or B) for replacement. The marking can be found on the blades. Using the incorrect blade will make it impossible to control the quadcopter.

(Assembly of the blades: Clip the small cap of the blade, and then aim at the shaft of the motor and press it. It may require a little force. Please be careful so you don't break it.)

