



BALD EAGLE R/C INSTRUCTION MANUAL

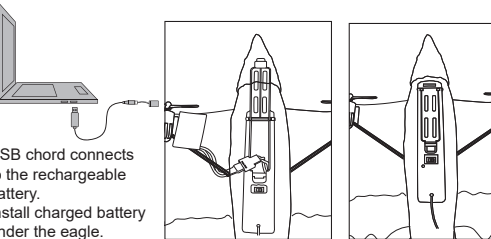
Item# 17027

Recommended for ages 14. Please read and follow this instruction manual.
Do not give this vehicle to a child under 14 years of age.
Adult supervision Required.

CAUTIONS:

1. This product is not only a toy, but a precision flying object with integrated mechanics and electronics. This product requires prior knowledge and expertise in aerodynamics, hand eye coordination and remote control operated products/games. This product needs to be correctly assembled and paired with remote control to avoid any incidents and accidents. The product owner should operate and control in a safe manner. Please note that Jupiter Creations, Inc is not liable or responsible for any accidents that may result in injury, damage or loss of property. We urge you to play responsibly, handle and fly with care.
2. This product is suitable for users that have prior operating experience or users no less than 14 years of age.
3. The flying space suggested is a open space that is legally viable for a remote control drone/flying toy. Do not operate around people. Make sure the area you are using for take off is clear of obstacles and people.
4. If you encounter any problems while operating or repairing this product, kindly contact us at www.jupitercreations.com.

WARNING:
Please keep your parts of body away from the propeller when the propeller is rotating.



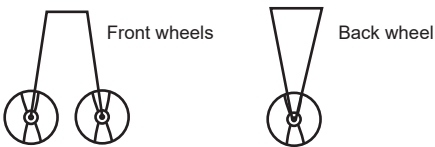
USB chord connects to the rechargeable battery.
Install charged battery under the eagle.

PREPARING TO FLY:

Instructions for 2.4 Ghz frequency pairing:

1. Turn on the power switch of the aircraft with the frequency indicator flashing, it means the aircraft is searching the frequency signal.
2. Pull the throttle rocker on the remote control to the lowest position, and turn on the switch of the remote control with the power indicator flashing, it means that the remote control is searching the signal for frequency matching.
3. When the indicators of the aircraft and remote control are long-term on at the same time, it means that the frequency matching is successful and the rc aircraft can be operated normally.

Before flight, you must install the take off/landing wheels. Insert the set of two wheels under the front of the head insert area. Insert the solo wheel under the tail insert of the aircraft. Make sure the snap in. Once the wheels are on the Eagle, you are ready to prepare for flight.



CONTENTS AND SPECIFICATIONS:

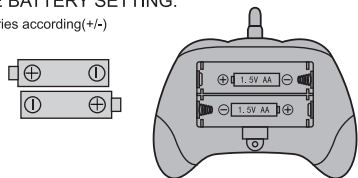
1. Bald Eagle Glider	*1	5. Battery	*1
2. Transmitter	*1	6. Manual	*1
3. Extra Propeller	*2	7. Front wheels	*1
4. USB charging cable	*1	8. Back wheel	*1

Product Battery:Li-Polymer 3.7V 150mAh
Remote Battery:2 x 1.5V AA Remote control distance:120m
Flight duration: About 10 minutes



REMOTE BATTERY SETTING:

Place batteries according(+/-)

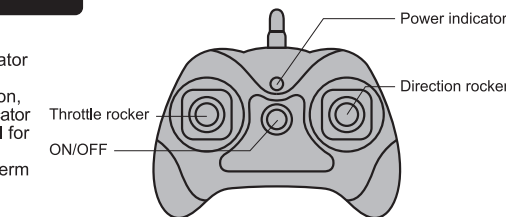


BATTERY CHARGING

Take out the aircraft battery, then connect the charging head of the USB charging cable to the battery charging socket, and connect the USB terminal to the power supply for charging.

Pay attention to the following when charging:

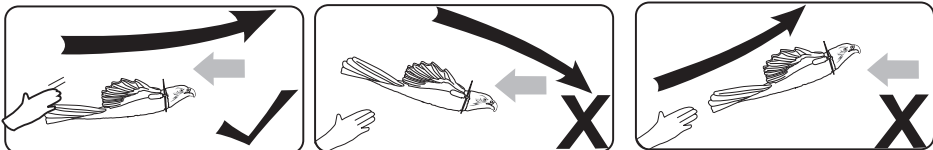
- Do not leave the charged battery in a hot place, such as an open flame or electric heater, otherwise it may be damaged or explode.
- Do not immerse the battery in water. The battery should be stored in a dry place.
- Do not disassemble the battery.
- Do not leave when charging



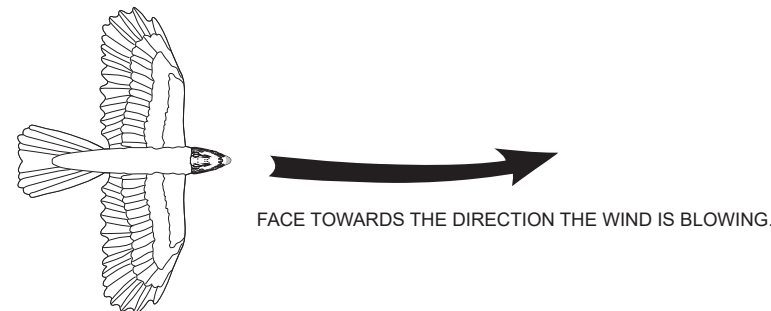
TAKE OFF:

Once you have charged and installed the batteries on both the aircraft & remote control, and you have succesfully paired the remote control with the aircraft. You are ready to fly. There are two ways to begin your flight.

1. Throw: Grab the Eagle on the bottom of the end of the body with index and thumb. Using your other hand, push the throttle upward to its max position, and once the propeller reaches top speed, throw the aircraft slightly upwards then quickly control the altitude and direction, using the remote control. Do not throw downwards or straight up.

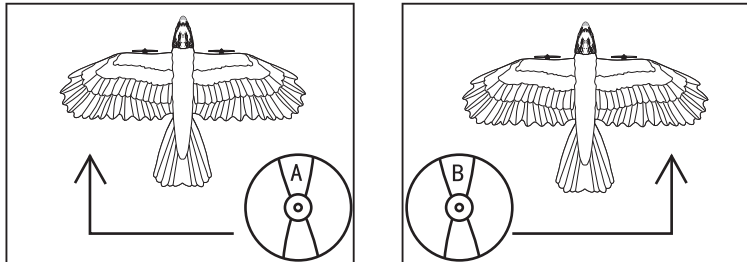


2. Ground take off: Grab the Eagle and place it on the ground with the nose facing the same direction the wind is blowing. Push the throttle gradually upward to its max position. The aircraft will gain speed for a certain distance before taking off to a certain altitude. Using the remote control, you can manage the flight.



To land, slowly lower the speed and altitued with the remote control. Aim towards a smooth landing strip, and glide down until the wheels make contact with the ground.

In case of an emergency, stop using the controller for the aircraft to immediatte stop and land.



If the propellers get broken or bent during flight, please replace them with the spare propellers included in the package. And please make sure the replaced propellers with correct types. (As Figures Show)

Trouble shoot:

- (1) Please make sure the batteries of the remote control and the aircraft are fully charged before each flight.
- (2) If the aircraft is damage by crash, please repair it with scotch tape or glue it together for another flight.

Jupiter Creations

© 2023 Jupiter Creations, Inc. All rights reserved
www.jupitercreations.com

2.4

GHZ **RC**

