

# ROCKET DRONE

Recommended for ages 14+. Please read and follow this instruction manual.  
Do not give this vehicle to a child under 14 years of age. Adult supervision Required.

Item# 17025



## CAUTIONS:

### 1. Safety Information

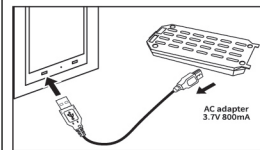
- (1) This product is a high precision device and integrates mechanics, electronics, aero-mechanics and HF transmit etc., and only accurate assembly and debugging can avoid any possible accident. The owner of the device should operate in a safe way and any personal injury or property loss caused by inappropriate operation shall be beyond of our responsibilities, because we will not control, assemble and operate the device.
- (2) This product is applicable to the population over 14 years old, with certain model operation experience.
- (3) The airframe should be locally legal for model operation.
- (4) We will not take any responsibility related to safety in terms of operation, use and control upon the sale of the product.
- (5) Please contact the local specified distributor entrusted by us for any problem to operation and maintenance.

### 2. Cautions

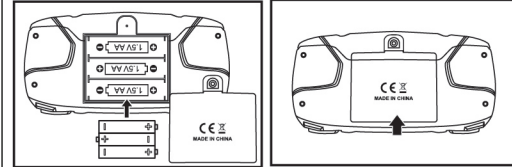
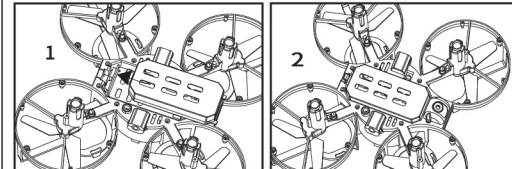
The drone is a high-risk product, please keep it away from the crowd while playing. It might cause damage of the drone or personal injury by improper assembly, poor control or unfamiliar operation, please be cautious.

- (1) Keep away from obstacles and the crowd. The drone has uncertain flying speed and various states, which bring about potential danger. Keep away from the crowd, high building and high-voltage wire etc., and avoid severe weather to ensure the safety of the operator, surrounding crowd and property.
- (2) Keep away from humid conditions. The drone consists of many precise electronic components and mechanical elements which should be kept away from humid conditions or water in case of malfunction.
- (3) Safe operation. Pay attention to the operator's state and operation skill, and avoid fatigue operation with lassitude or improper operation which would bring about possible danger.
- (4) Keep away from the parts of high-speed revolution. The operator, surrounding crowd and any objects should keep away from the components of high-speed revolution in case of danger or damage.
- (5) Keep away from heat source. The drone is made of metal, fiber, plastic and electronic elements etc., which should be kept away from heat in case of deformation or damage due to high temperature. This product is using Li-Po battery Li-Po battery differs from the common batteries, which contains the chemical materials by means of thin tinfoil. This design can reduce the weight of the battery but also make it more brittle to rough or improper operation. Like other batteries, any incorrect operation would cause fire or explosion.
  - \*Do not charge the battery when putting it inside the drone, which might cause fire and damage.
  - \*Please keep the drone with 50% power if you do not play it for a long time, to extend the battery life. In that case, charging for the next time needs only half time for a full charging.
  - \*Please use the original charger.
  - \*Do not charge the battery on the carpet to avoid fire.
  - \*Please recharge the Li-po battery if it is stored more than 3 months for the sake of normal lifetime.

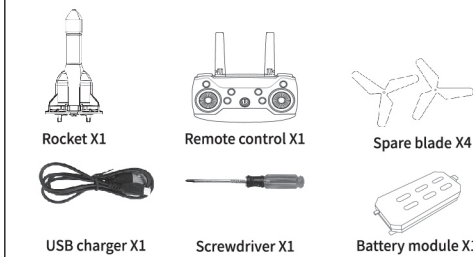
## BATTERY CHARGE AND INSTALLATION:



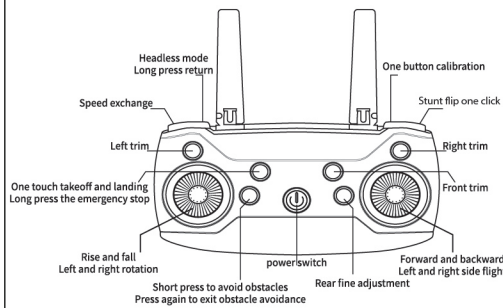
- Connect one end of the USB charging cable to the adapter power port, and then connect the other port to the battery charging port. When charging correctly, the USB charging cable indicator is always on.
- The USB charging line indicator is off, indicating that the charging is complete (the charging time is about 50 minutes)
- Install the drone battery module in the direction shown in the figures to the drone battery holder. (Figure 1)
- The battery module finished in installation. (Figure 2)



## CONTENTS:



## REMOTE CONTROL:



## PREPARING TO FLY:

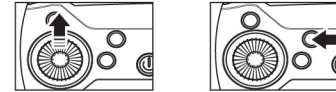
With the battery charged and in place, place the Rocket Drone flat in a horizontal plane. Long press the drone's power switch. Once the light flashes, the drone is in standby mode.

NOTE: The back of the drone should be facing the operator.

Press the remote control's power button. The remote's lights will flash. Push the left joystick up to the highest point, then aim the joystick down to the lowest point. The drone's lights will stop flashing and remain on. This should pair the remote with the drone. To calibrate the drone, hold the left and right joystick at a 45° angle. The drone's lights will blink and the remote will make a "beep" sound. This should complete horizontal calibration.

## TURN ON YOUR DRONE AND BLASTOFF:

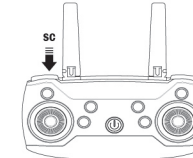
**Manual Liftoff:** Once the drone and remote control are synced, you can manually take off by slowly pushing the left joystick upwards. This will start your propellers. Then accelerate your upward movement again to accelerate rotation and take off.



**Auto Takeoff:** Once the drone and remote control are synced, you can press the "one button take-off" on the remote control, and the drone will automatically start flight. After the propellers slowly rotate, it will automatically rise about 4ft and hover.

## SPEED CHANGE

Press the left joystick down to adjust the speed of forward, backward, left and right side and steering; the speed is divided into three gears, the default is one gear, press "sc" two sounds for the second gear, then press "sc", The three-tone is the third gear, and when you press the "sc", it returns to the first gear.



## ADVANCED CONTROLS:

### 1. 360° STUNT FLIP FUNCTION

When you are familiar with the basic actions, you can proceed to explore even more exciting stunt actions. Fly the drone to a height of above 3 m above the ground, press the button (Stunt Flip Button) on the remote control and then push the right joystick to the farthest position of Front/Back/Left/Right, the drone will now execute the Front/Back/Left/Right stunt flip function.

NOTE: This stunt works best when the battery is fully charged. If the battery is low, this function won't work.

### 2. HEADLESS MODE:

Begin flight. Once the drone is airborne, press the "headless mode" button. The remote will beep and the lights on the drone will flash at the same time. The drone will now be in hover mode. To exit this mode, just press the joystick in any direction to retake control.

NOTE: Once you change the direction of flight, make sure to check the direction the drone is facing as it will need to be corrected.

### 3. OBSTACLE AVOIDANCE MODE

Begin flight. Once the drone is airborne, press "Obstacle Avoidance". This will turn on the drone's sensors on and when the drone approaches a wall or obstacle, it will fly back and avoid it. In this mode, the drone can only fly in 1st gear. The fast gear cannot be turned on. This mode is recommended when flying indoors. To exit obstacle avoidance mode, just long press the button.

### 4. INFRARED INDUCTION JET MODE

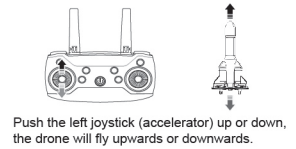
You can use your hand to control the Rocket Drone using this induction mode. For this mode start on the ground. Turn on the drone so the lights flash. The press the remote control power button twice fast. The lights will flash quickly as they complete calibration. Grab the Rocket and throw about 3 feet up in the air. The drone will begin to fly and spin around induction obstacles. It will also recognize obstacles below the drone.

To exit this mode, press the left joystick up then down to pair the frequency. Once connection is successful, wait for the drone light to turn on. Now you can use the remote control to fly normal and control the drone's actions.

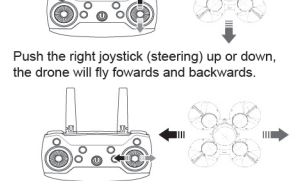
NOTE: In case of an emergency, grab the middle of the rocket with your hand, and turn the drone upside down. The drone will immediately stop working.

WARNING: For safety reasons, when flying indoors, do not stand under the flying drone.

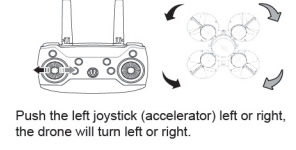
## FLIGHT CONTROLS:



Push the left joystick (accelerator) up or down, the drone will fly upwards or downwards.



Push the right joystick (steering) left or right, the drone will fly to the left or right side.



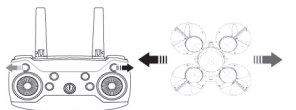
## FINE TUNE YOUR DRONE:

### Forward/Backward



If the drone keeps flying forward or backwards on its own, tune in your directional calibration by pressing the "Fine Tuning: button up or down.

### Sideward fly fine-tuning



If the drone keeps flying towards the left or right on its own, tune in your directional calibration by pressing the "Fine Tuning: button right or left

**Jupiter Creations**

© 2023 Jupiter Creations, Inc. All rights reserved  
www.jupitercreations.com

