



MADE IN CHINA



For Customer Service or if you need to service your product please email:

Service@BandDGroup.com

Please note the product model number, your name and phone number in the email message.

IN1500BKB • Automatic Beverage Cooler

Contents:

- One Automatic Cooler unit w/ top and suction cup
- Instruction Manual

Actual product may differ slightly from photograph.

## LIMITED 30-DAY WARRANTY

B&D Group, LLC, warrants to the original consumer that its products are free from any electrical or mechanical defects for a period of 30 days from the date of purchase. If any such defect is discovered within the warranty period, B&D Group, LLC, will repair or replace the unit free of charge upon receipt of the unit, shipping postage prepaid and insured to the factory address received from Customer Service. The warranty covers normal consumer use and does not cover damage that occurs in shipment or failure that results from alterations, accident, misuse, abuse, neglect, wear and tear, inadequate maintenance, commercial use, or unreasonable use of the unit. Removal of any panels voids all warranties. This warranty does not cover cost of repairs made or attempted outside the factory. Any applicable implied warranties, including warranties of merchantability and fitness are hereby limited to 30 days from the date of purchase. Consequential or incidental damages resulting from a breach of any applicable express or implied warranties are hereby excluded. Some states do not allow limitations on the duration of implied warranties and do not allow exclusion of incidental or consequential damages, so the above limitations and exclusions in these instances may not apply. The only authorized service center in the United States would be expressly communicated from Customer Service. Ship the unit carefully packed, preferably in the original carton, and send it prepaid, and adequately insured. Include a letter detailing the complaint or issue, along with your daytime telephone number, name and address inside the shipping carton. If your warranty has expired and you want an estimated fee for service, write to Service@BandDGroup.com, specifying the model number and the problem.

PLEASE DO NOT SEND YOUR UNIT WITHOUT RECEIVING AN ESTIMATE FOR SERVICING.  
WE CANNOT STORE YOUR UNIT.



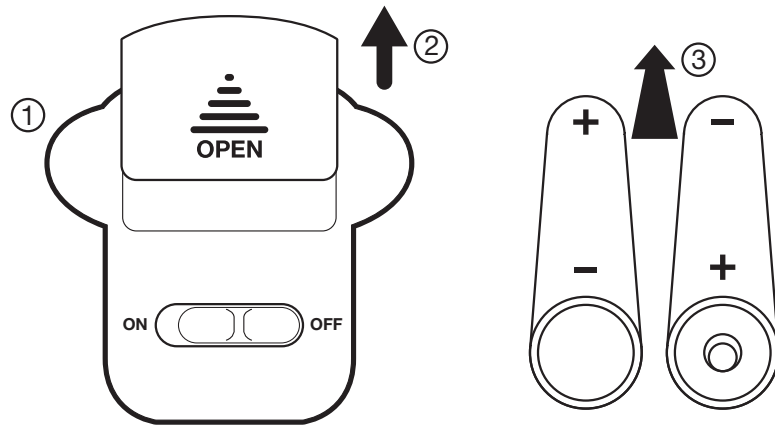
## CARE & MAINTENANCE

INSTRUCTION MANUAL  
Model no. IN1500BKB / IN1500WHB

## BATTERY INSTALLATION

Congratulations on your purchase of the Chill-O-Matic Automatic Beverage Chiller. You're just moments away from having ice-cold drinks anytime you want, without a cooler or refrigerator!

1. Find the battery compartment on the side of the Chill-O-Matic unit.
2. Slide the battery door up to reveal the battery compartment.
3. Install the batteries in the direction as shown.



4. Slide the battery compartment door back onto the unit. Then turn on the unit to confirm correct installation.

### ⚠ NOTICE

Please use 2 AA batteries. Use the polarity markings to install in the correct orientation. Do not mix different batteries, battery types or old batteries with new batteries.

### ⚠ CAUTION

If the Chill-O-Matic unit will not be used for extended periods of time, please remove the batteries. This will help prevent leakage and/or corrosion within the unit.

### NOTE

The suction cup is designed to be easily separated from the battery housing. This will help with easy can removal and prevent any possible jamming should the ice level be too high. If it becomes separated, then simply plug it back in the hole.

## QUICK START GUIDE

### 1. Remove Lid and Spinning Motor

Make sure you have 2 AA batteries installed.

### 2. Attach Your Drink

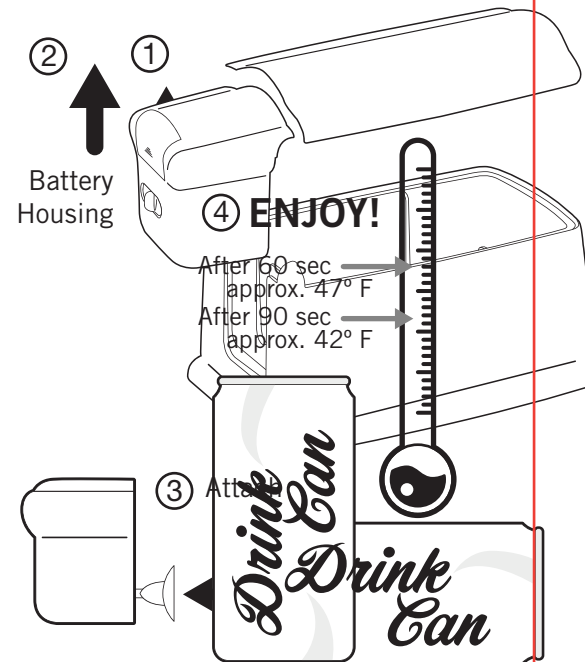
Attach the bottom of your drink to the suction cup. Slide your drink and the spinning motor back in main chamber.

### 3. Add Ice – Not Too Much!

Ice should fill the bottom and sides. You don't need to overfill it!

### 4. Close and Spin!

Your drink will be ice cold in 60 seconds!



### For Best Results

- Firmly attach the bottom of the drink can to the suction cup.
- You do not need to place a lot of ice in the machine for it to operate.
- If the lid does not easily fit back on top, then please remove excess ice.
- The can should spin easily. If not, please remove ice that may be blocking it from doing so.
- Turn on the unit and leave on for approximately 60 seconds for an ice-cold drink.
- For an even colder drink, leave on for approximately 80-90 seconds. The temperature will be approx. 47° after 60 seconds or approximately 42° after 90 seconds.

### NOTE

The Chill-O-Matic will not work with bottles. The unit will only work with 12 oz. drink cans or smaller.