

# STAIR CLIMBING HAND TRUCK

Item No. 208630

User Guide



Thank you for purchasing the Stair Climbing Hand Truck. Please take a few moments to read this guide and store it for future reference.

## INTRODUCTION

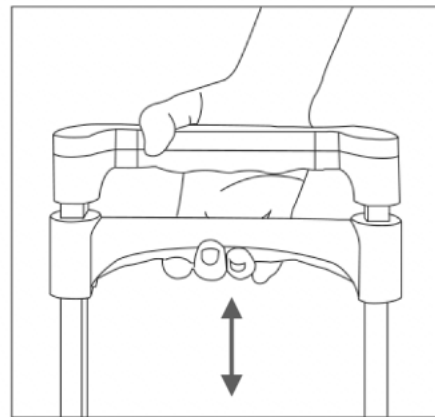
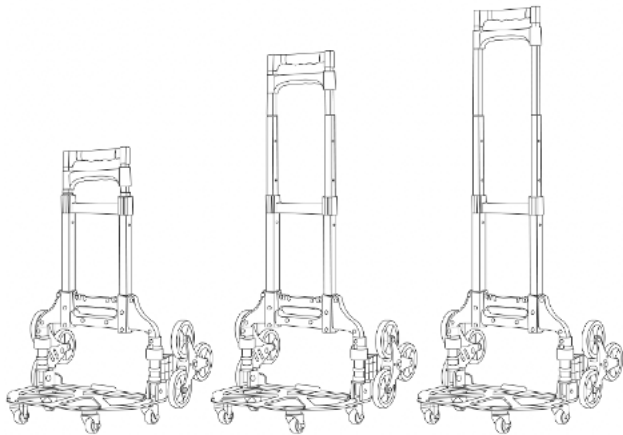
The Stair Climbing Hand Truck makes it easy to transport heavy items over curbs, up and down stairs and through all types of terrain.

## FEATURES

- Durable aluminum frame
- Foldable design
- Adjustable handle
- Floor loading capacity: 130 lbs.
- Stair loading capacity: 66 lbs.
- Includes tie-down cord

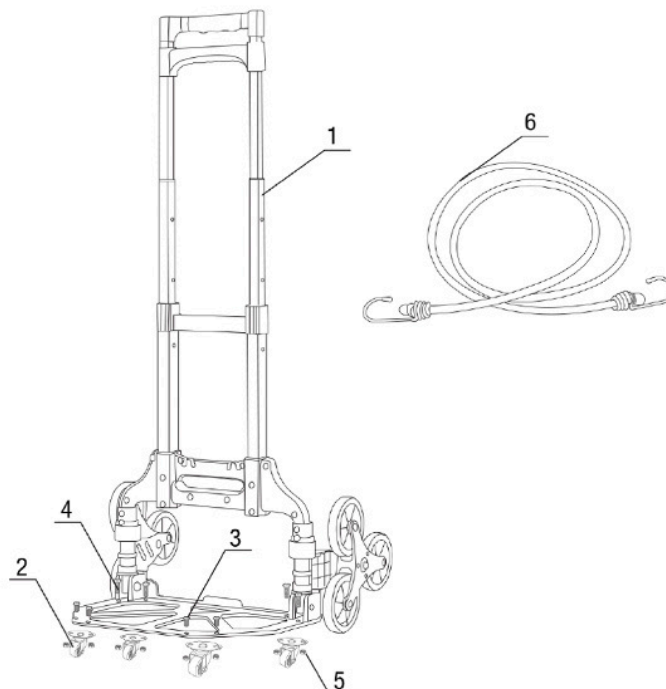
## ADJUSTABLE HANDLE

There are 3 handle lengths. To adjust the length, first squeeze the handle, then pull or push to adjust the height. [See illustrations.]



## PARTS LIST

1. Main frame
2. Wheel
3. Short screw
4. Long screw
5. Nut
6. Elastic tie-down cord



## **SAFETY WARNING**

- Please read these instructions fully prior to use.
- Use this product for its intended purpose only.
- Do not exceed the maximum load capacity [130 lbs. on flat surfaces / 66 lbs. on stairs].
- Do not modify this device.
- Do not operate this device under the influence of alcohol or drugs.
- This product is not a toy. Keep out of reach of children.

## **WARRANTY AND CUSTOMER SERVICE**

This item from SharperImage.com includes a 1-year limited replacement warranty. If you have any questions not covered in this guide, please call our Customer Service department at 1 (877) 210-3449. Customer Service agents are available Monday through Friday, 9:00 a.m. to 6:00 p.m. ET.