



RASTAR

RC ASSEMBLY MODEL KIT

ITEM NO. 97400

DIY SERIES

Scale 1:18

Assembly Plastic
Model Kit

64 PCS
& 8 PTS

2.4GHz
R/C



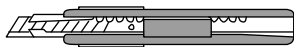
SIÁN
FKP 37

ATTENTIONS

ATTENTIONS

- The guardian of child(ren) should read and understand the contents of this manual before using the product, and guide child(ren) to use the product properly.
- In order to avoid personal injury, using tools including knives to do assembly should be done by an adult.
- This product should be stored properly to prevent children from accidentally eating it.
- Properly dispose of the scrap materials when removing the parts, and keep them out of the reach of children.
- Plastic bags are not toys, which may cause choking hazard. Please dispose of them properly after disassembly.
- The plastic pieces contain pointed parts. Be careful when assembling and when moving the model after assembly to avoid personal injury.
- Only alkaline or rechargeable batteries are applicable for the product.
- Different types of batteries or new and old batteries are not to be mixed, exhausted batteries should be removed from the model.
- The battery should be replaced under adult supervision and be put inside the model with correct polarity. Power terminals must not be short-circuited.
- Non-rechargeable batteries should not be recharged. Rechargeable batteries should be removed from the model before charging and be recharged under the supervision of adult. Damaged or leaked batteries are not to be charged.
- Only batteries of the same or equivalent type are recommended to be used.
- Wires and components must not be plugged into output sockets, and the toy must not be connected to the power sources which are more than the recommended quantity.
- Do not expose battery to sun, or drop it. Keep the battery away from fire, heat and water.
- Skin and clothing to be washed immediately if you make contact with leaked liquid from the battery.
- For better preservation of rechargeable batteries, please regularly recharge it. Only a charger of the same or equivalent type is recommended to be used.

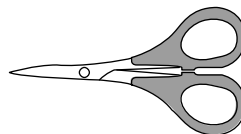
TOOLS (NOT INCLUDED)



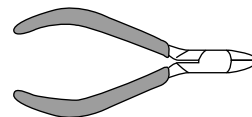
Knife



Tweezers



Scissors

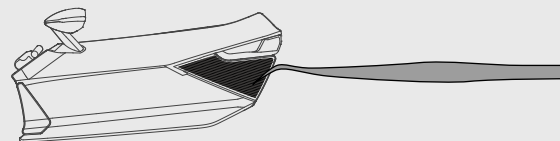
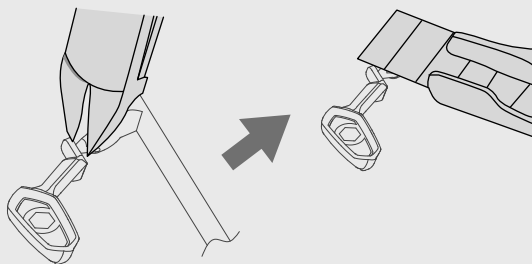



Flat-nose pliers

Components/ Assembly of Components

★ Use flat-nose pliers to clip the component off, and then use knife to trim the interface part to be smooth.

★ Peel off the sticker with tweezers and flatten it on the component.



 **WARNING:** Tools must be used by adult (knife, tweezers, flat-nose pliers, scissors), please be careful to avoid personal injury!

CAR BODY

The engine, suspension and driver's cab of the car are all black, the car body is red and the wheels are painted in silver. The stickers will be displayed during the following assembly process, you can also refer to the package drawing.

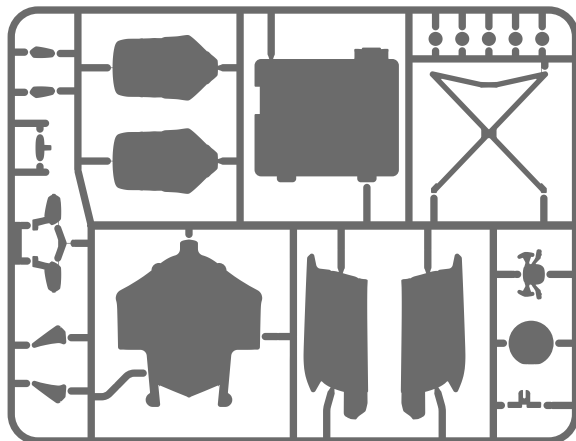
USE OF THE STICKERS FOR CAR BODY

- (1) Take the stickers out.
- (2) Carefully peel the sticker off with tweezers.
- (3) Hold the edge of the back plate and put the sticker on the model.
- (4) Fix the sticker with fingers and make the sticker in place.
- (5) Gently press the sticker downwards until the bubbles disappear.

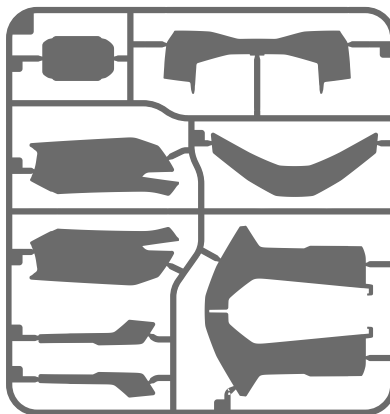
COMPONENTS

INSTALLED PROCEDURES FOR Lamborghini Sián FKP 37

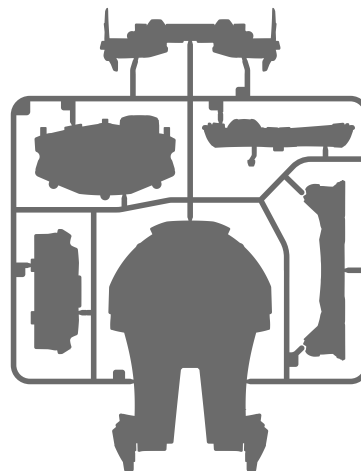
- (1) Take all parts out and make sure nothing is missing.
- (2) Do not remove all the parts at first, but just do assembly step by step according to instruction of the manual.
- (3) Take the stickers out and stick them on components first according to the instructions.
- (4) Assemble the car according to the figure.
- (5) Assembly process is completed.



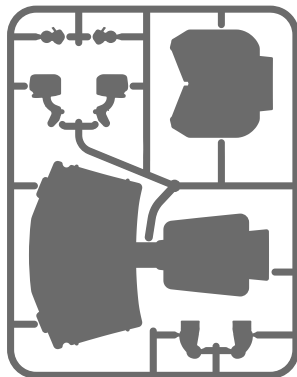
C15-C31



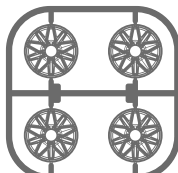
A1-A8



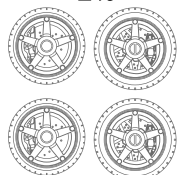
B9-B14



D32-D39



E40



42

43



56



57



55



53



52



51



47



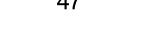
49



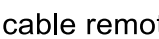
54



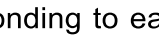
50



45



46



44



48



49



50

51

52

53

54

55

56

57

58

59

60

61

62

63

64

65

66

67

68

69

70

71

72

73

74

75

76

77

78

79

80

81

82

83

84

85

86

87

88

89

90

91

92

93

94

95

96

97

98

99

100

101

102

103

104

105

106

107

108

109

110

111

112

113

114

115

116

117

118

119

120

121

122

123

124

125

126

127

128

129

130

131

132

133

134

135

136

137

138

139

140

141

142

143

144

145

146

147

148

149

150

151

152

153

154

155

156

157

158

159

160

161

162


163

164

165

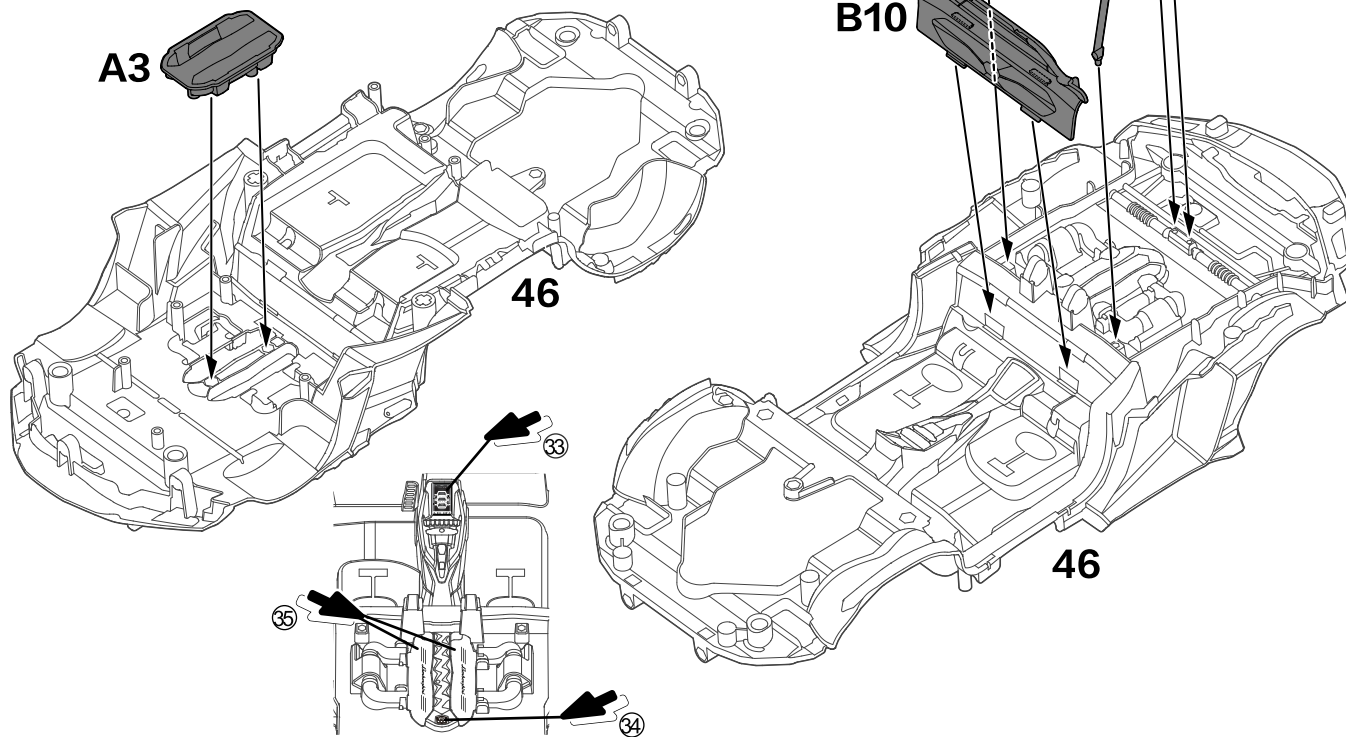
166

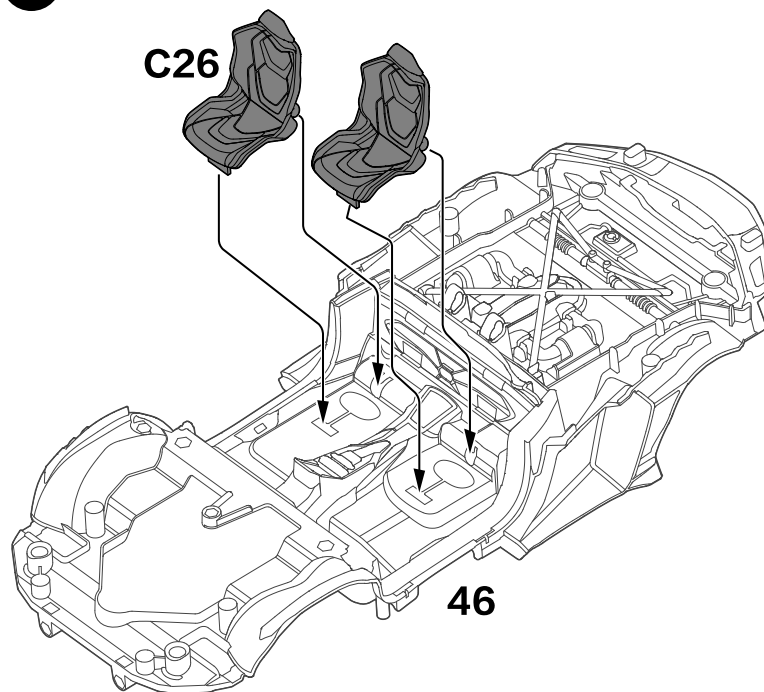
167

The following is a detailed tutorial and guidance on how to assemble each part. Please pay attention to where there are icons on the right.  stickers ——— accessories

1 Please put the stickers on the corresponding position according to the serial number marked in the figures before assembly.

(1) Install A3 on 46. (2) Install B10 and C31 on 46.

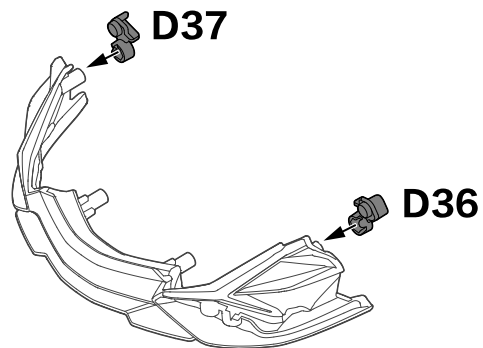
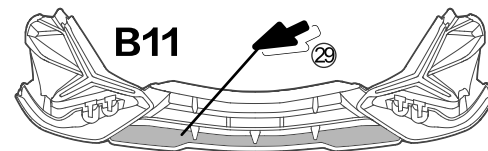


2

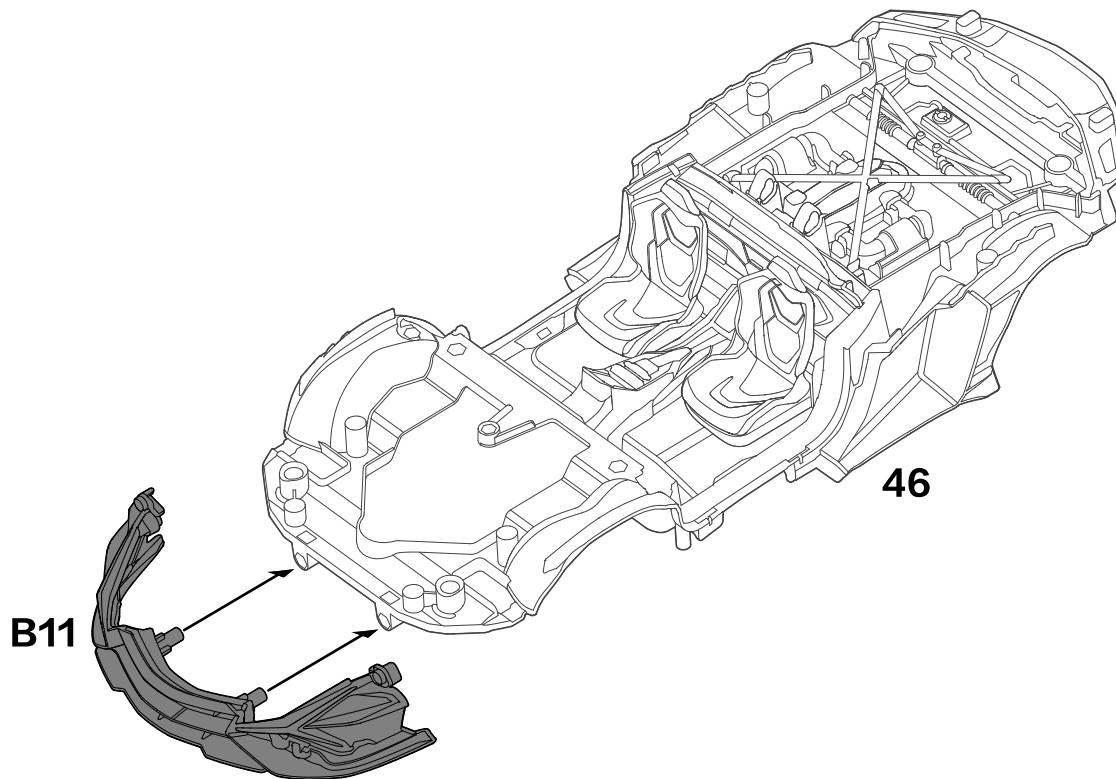
Please put the stickers on the corresponding position according to the serial number marked in the figures before assembly.

(1) Install C26 on 46.

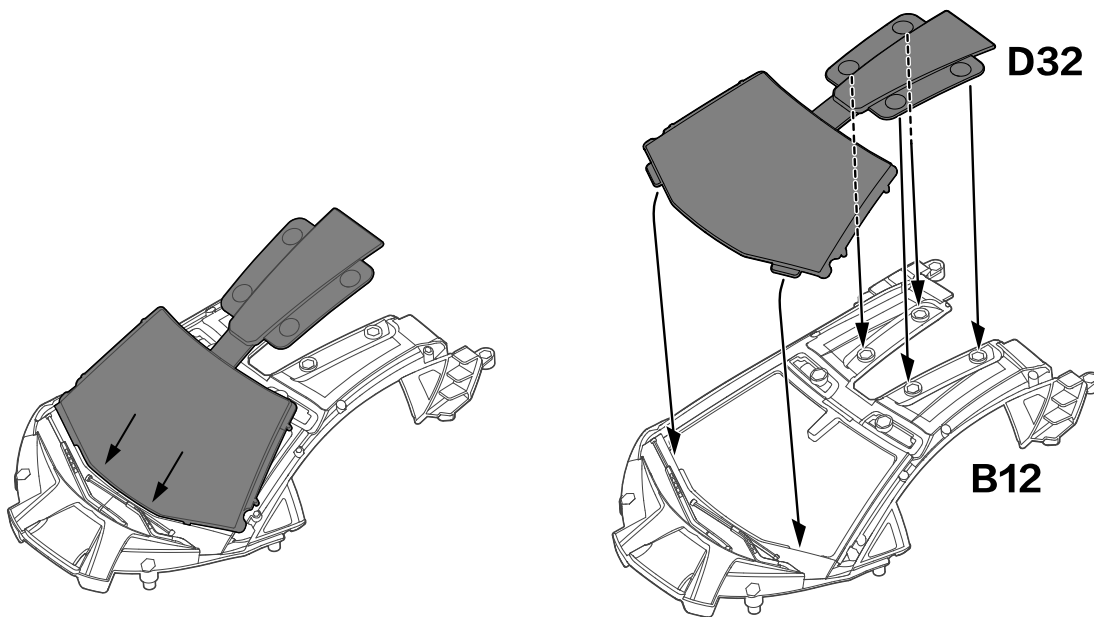
(2) Install D36 and D37 on B11.

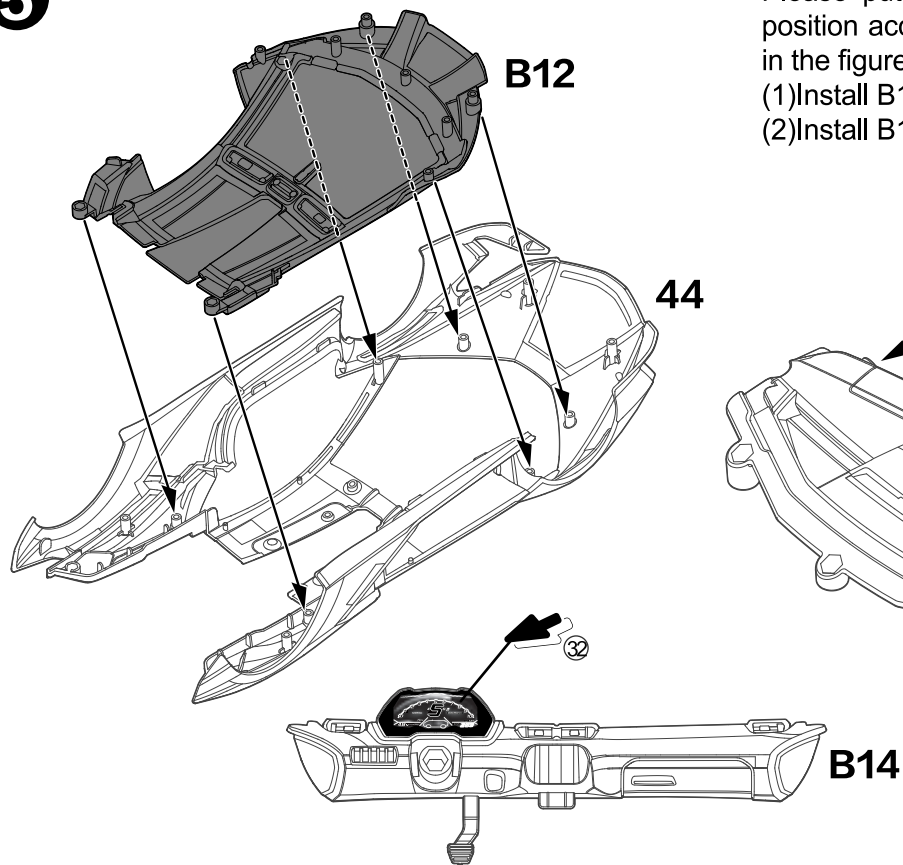


- 3** Install B11 into the hole shown in Figure 46.



- 4** Insert the two bones on the bottom of D32 into the platform of B12, the bottom edge should be smooth, and then press the four pillars on the top of D32 into B12.

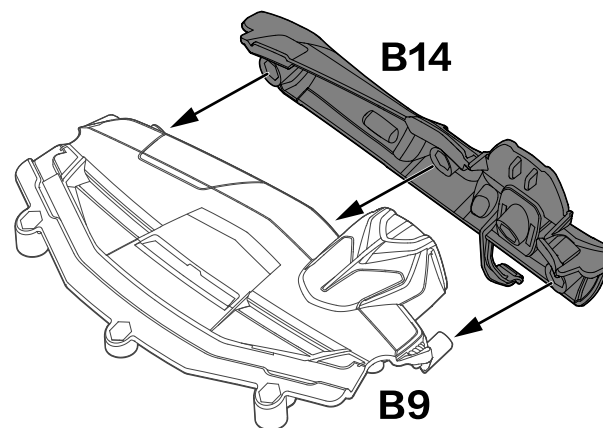


5

Please put the stickers on the corresponding position according to the serial number marked in the figures before assembly.

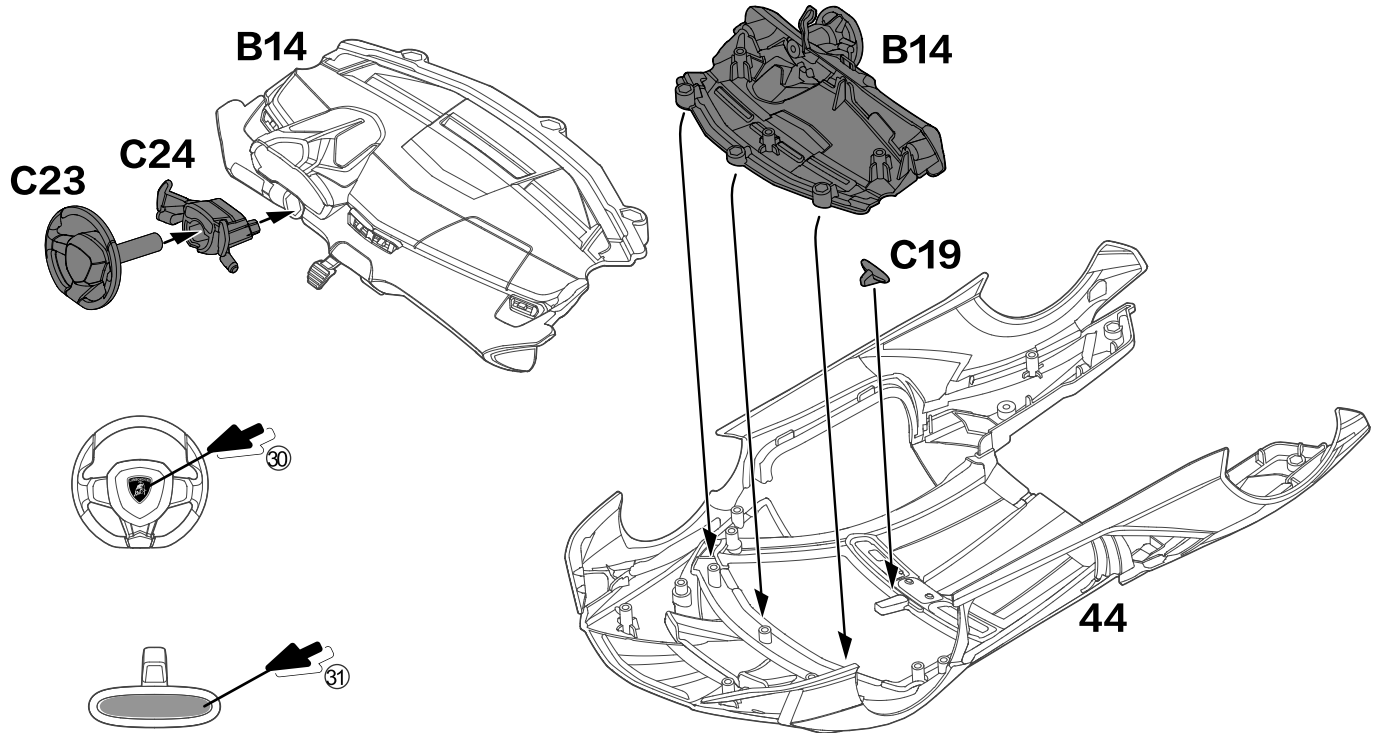
(1) Install B12 on 44.

(2) Install B14 on B9.



6 Please put the stickers on the corresponding position according to the serial number marked in the figures before assembly.

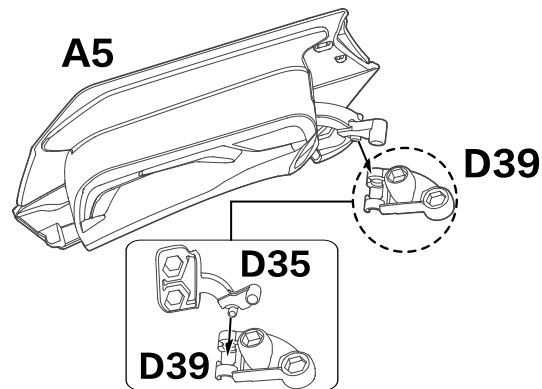
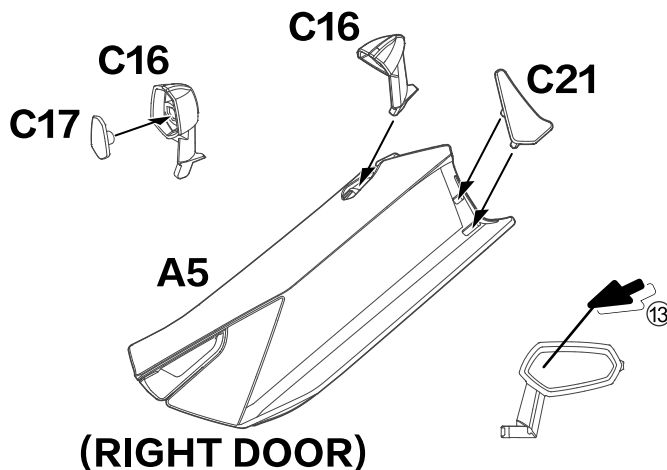
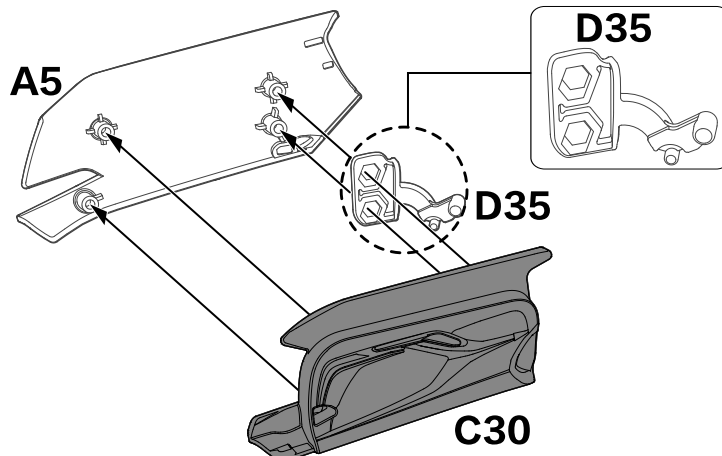
- (1) Set C24 on B14, and then insert C23 into C24 hole as shown in the figure.
- (2) Install C19 on 44.
- (3) Install B14 on 44.

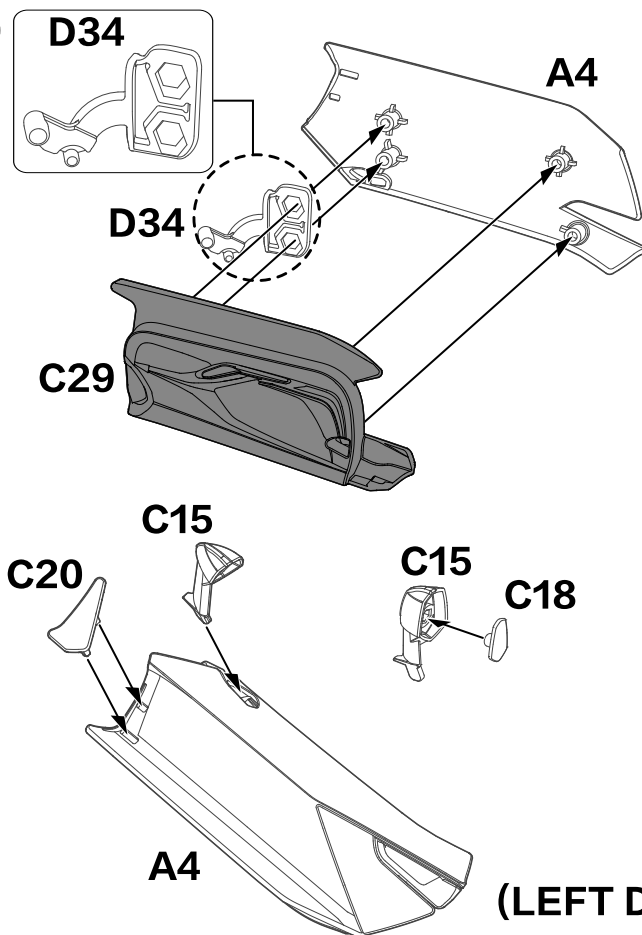


7

Stickers on the corresponding position according to the serial number marked in the figures .

- (1) Insert D35 into the two holes of A5, install C30 on A5.
- (2) Install C17 into C16, and then insert the installed C16 into the hole of A5 as shown in the figure.
- (3) Install C21 into A5 as shown in the figure.
- (4) Insert D39 into the two holes of A5.



8**(LEFT DOOR)**

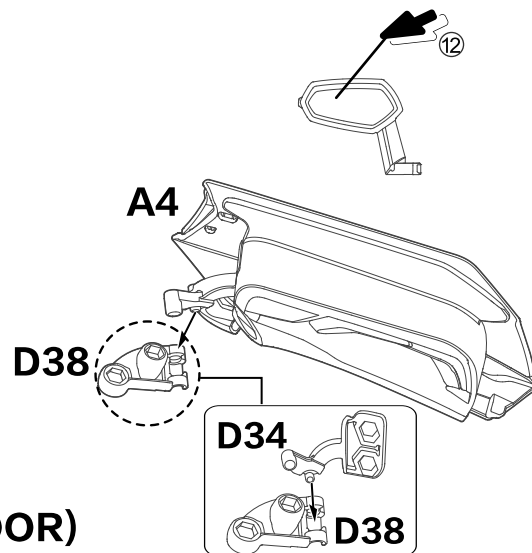
Stickers on the corresponding position according to the serial number marked in the figures .

(1) Insert D34 into the two holes of A4, install C29 on A4.

(2) Install C18 into C15, and then insert the installed C15 into the hole of A4 as shown in the figure.

(3) Install C20 into A4 as shown in the figure.

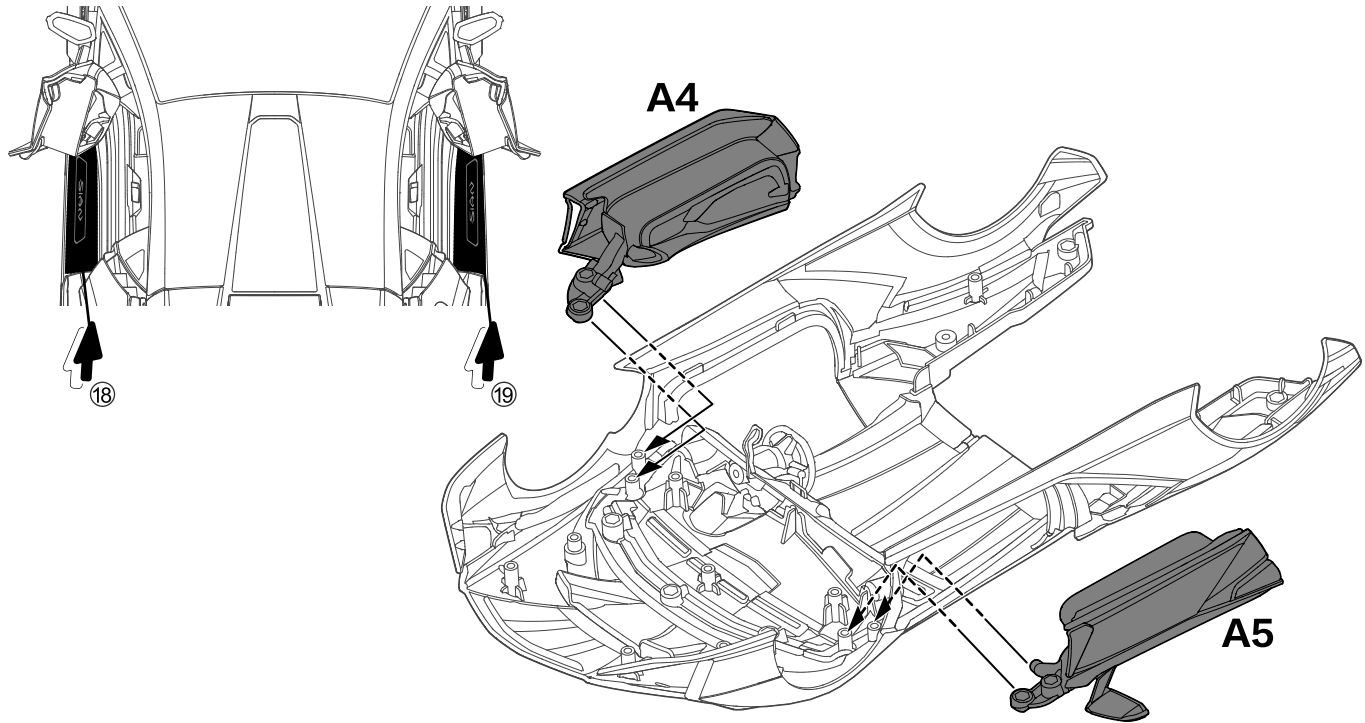
(4) Insert D38 into the two holes of A4.



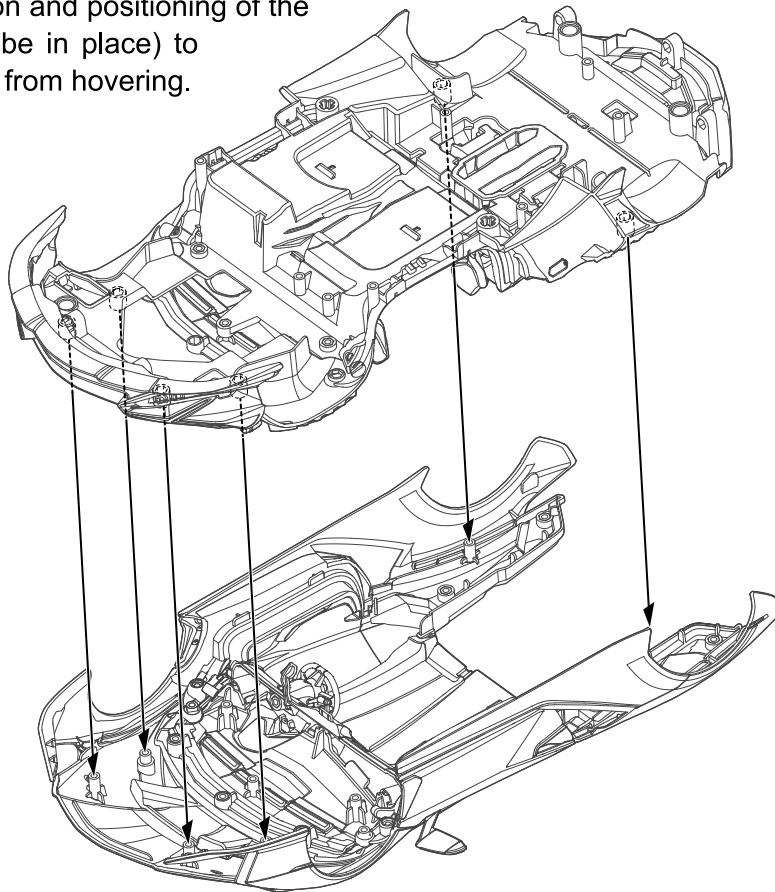
9

Please put the stickers on the corresponding position according to the serial number marked in the figures before assembly.

Insert the upper bones of the assembled A4 and A5 into the gap of chassis 44, and check if the car door can be opened and closed freely after assembly.

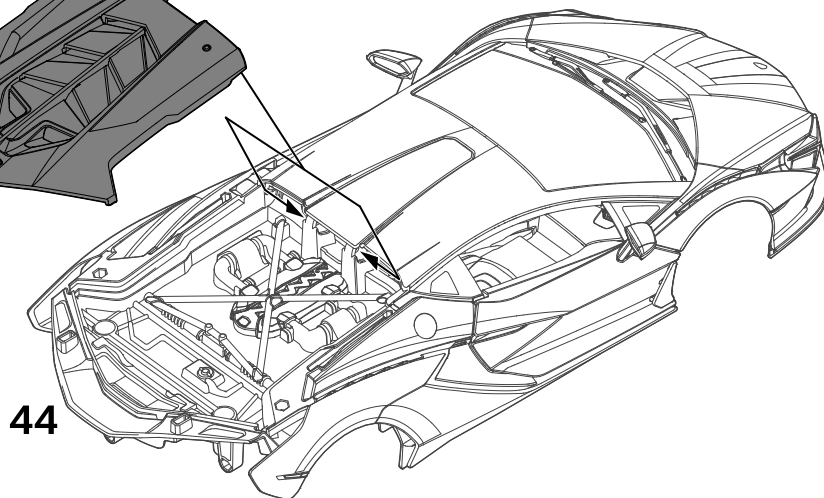
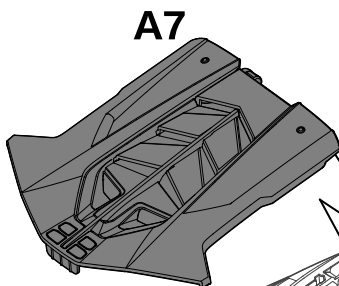
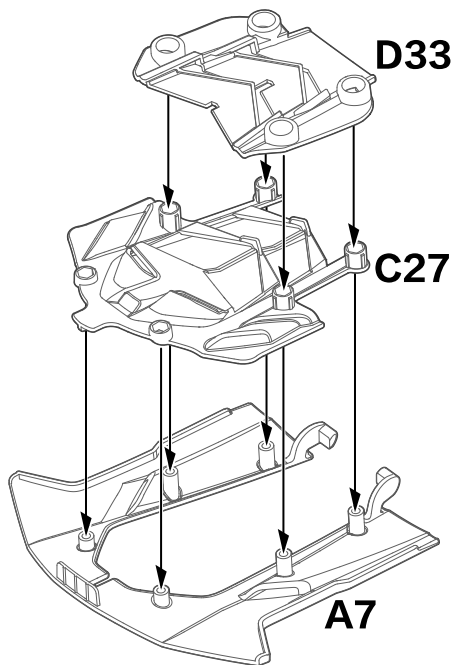


- 10** Assemble the assembled modules as shown in figure.(the rotation and positioning of the fixed door shall be in place) to prevent the door from hovering.

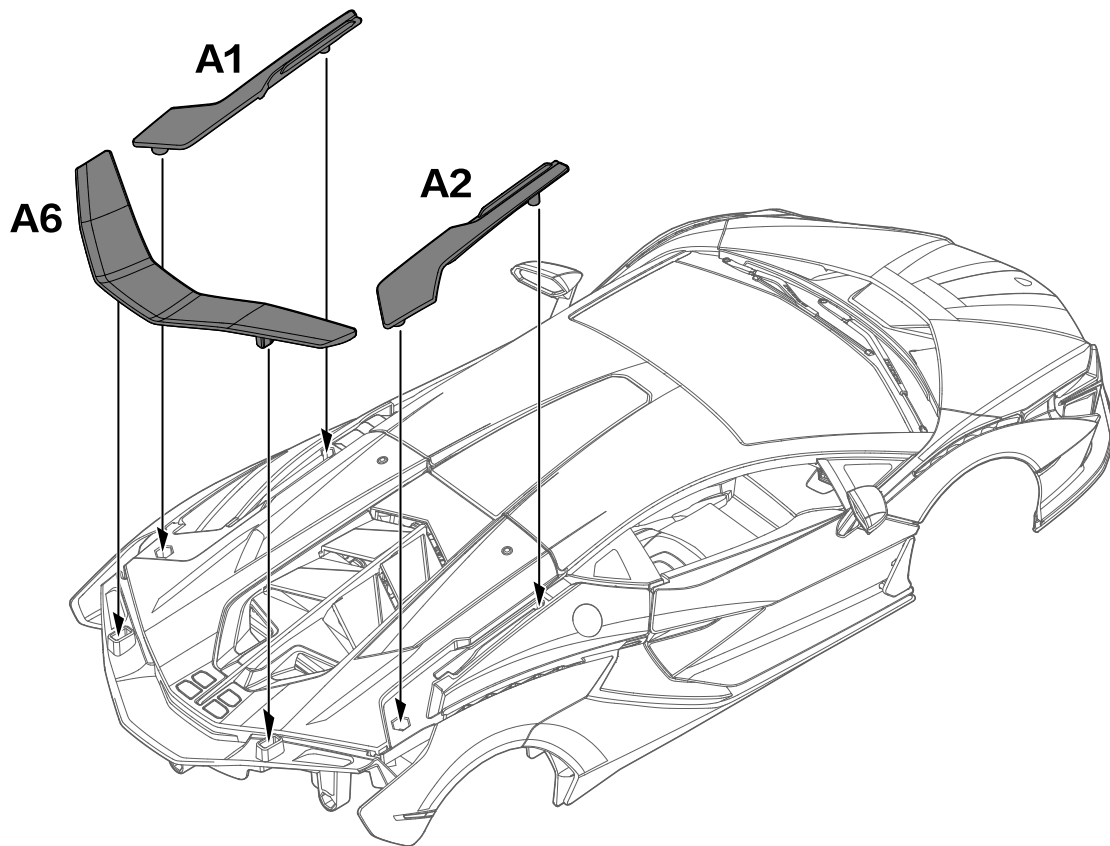


11

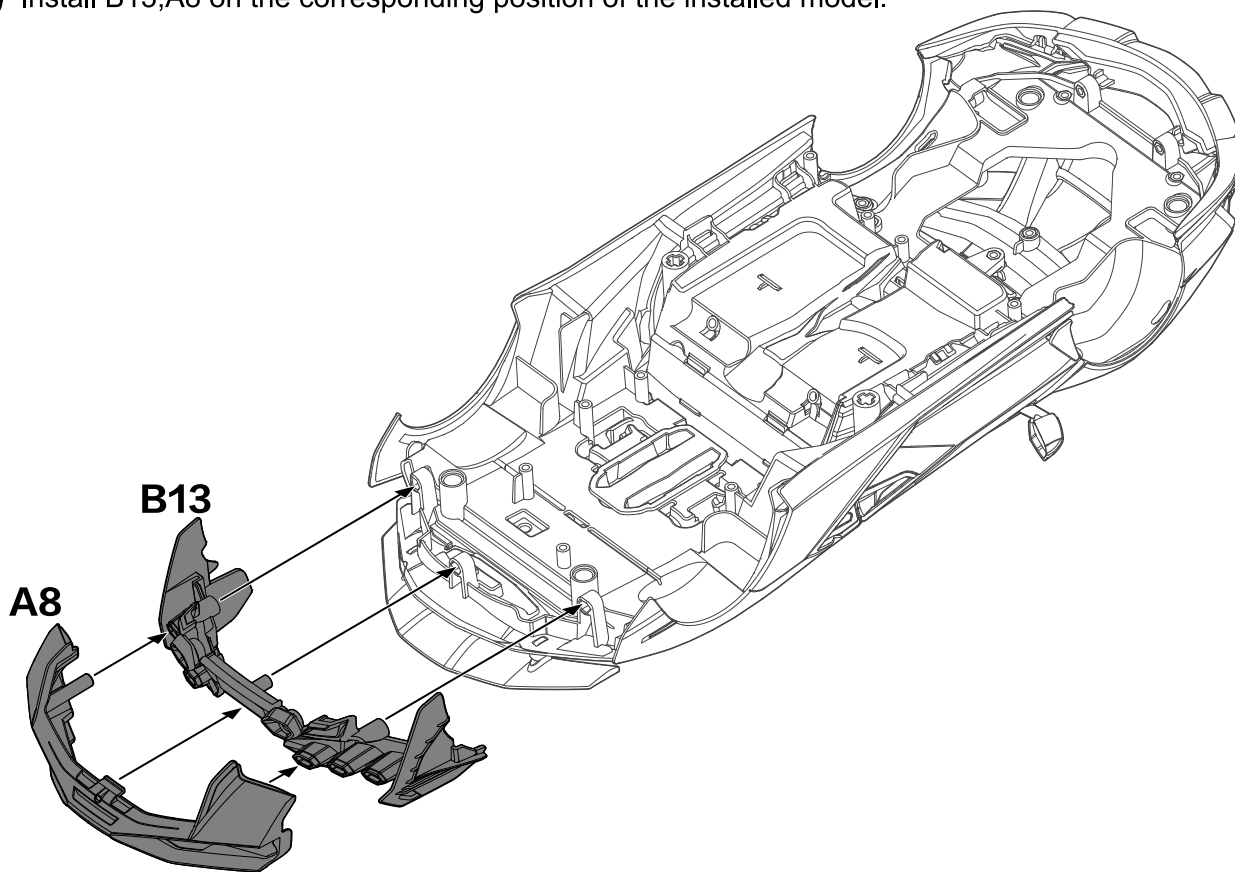
Cover D33 with C27, and then insert C27 into the holes of A7 as shown in figure. Install A7 to the corresponding position of the assembled model.



12 Install A1,A2,A6 on the corresponding position of the installed model.



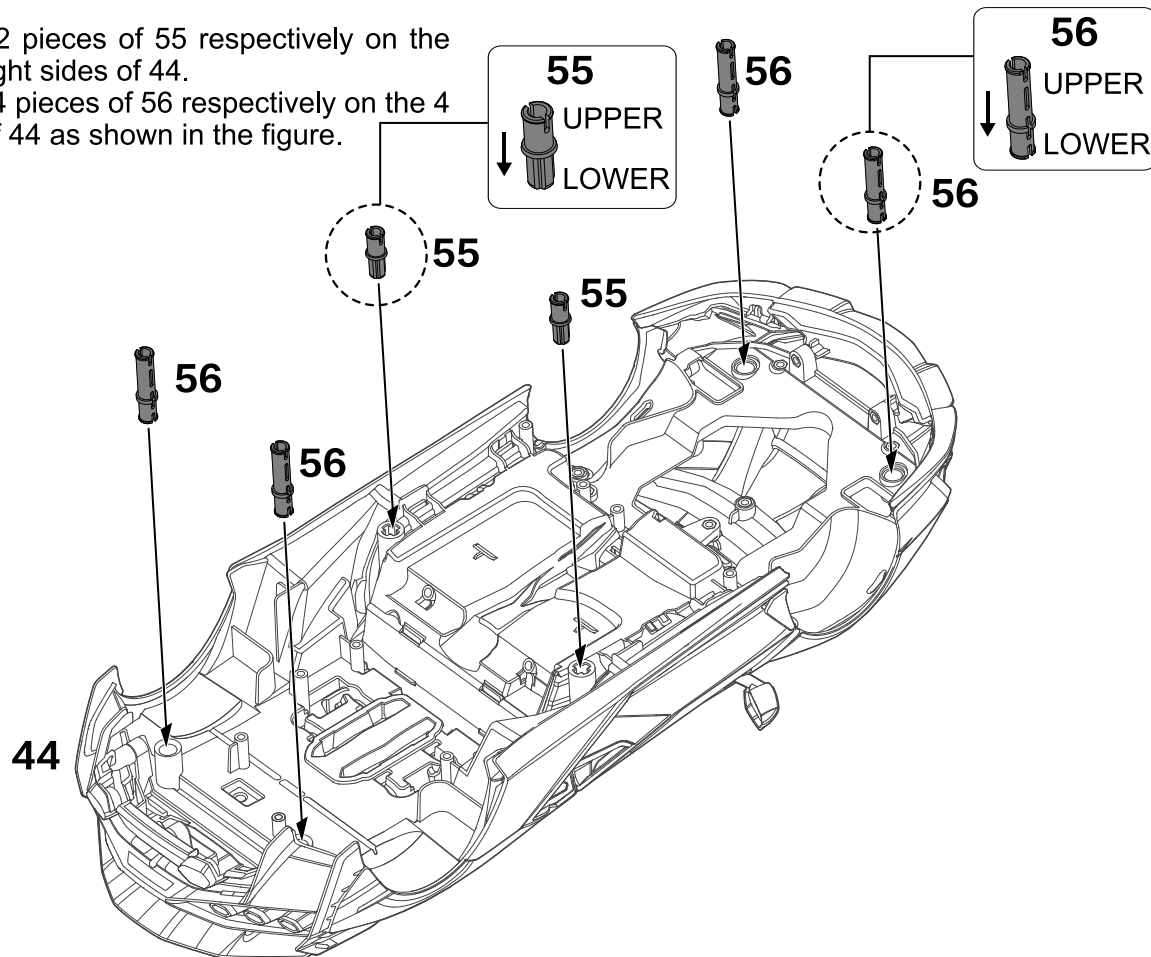
- 13** Install B13,A8 on the corresponding position of the installed model.



14

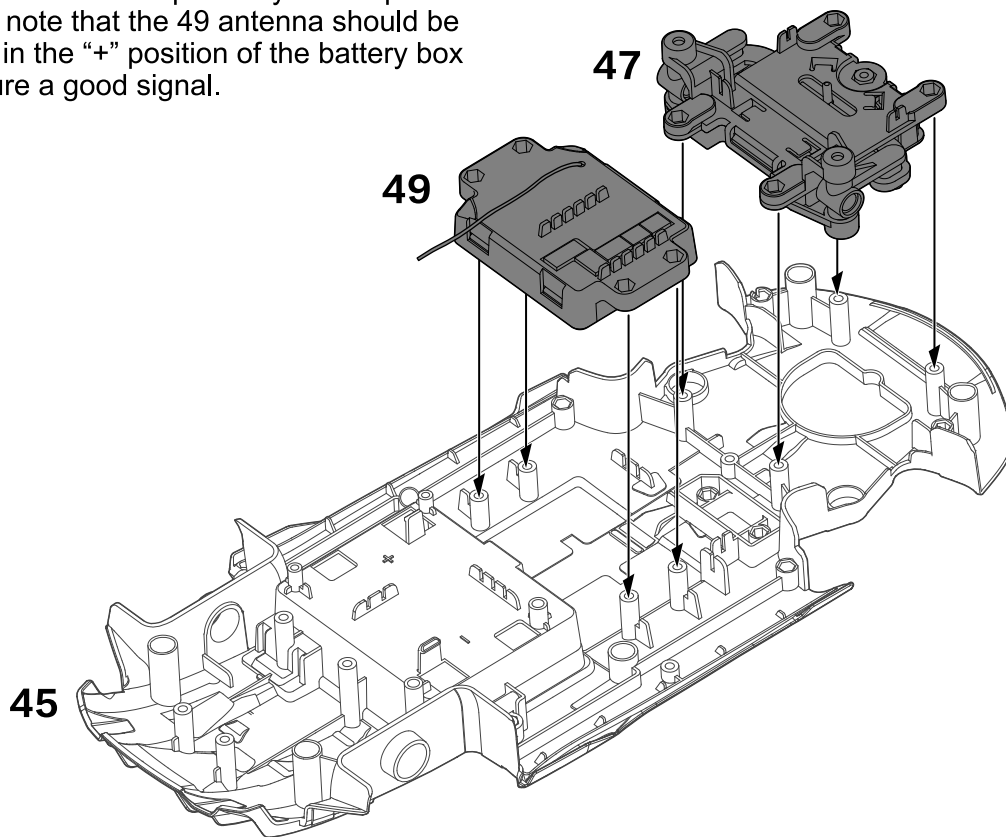
(1) Install 2 pieces of 55 respectively on the left and right sides of 44.

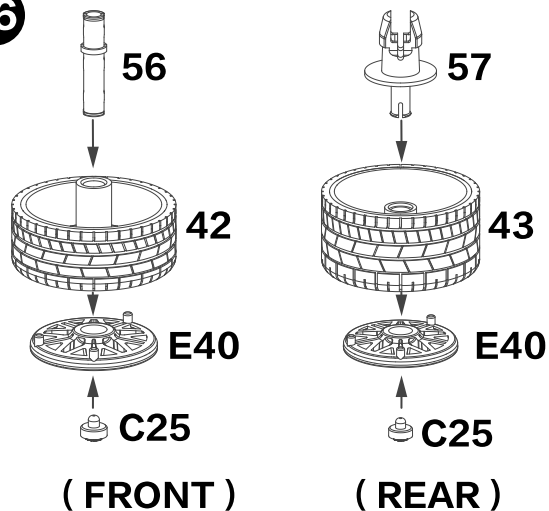
(2) Install 4 pieces of 56 respectively on the 4 corners of 44 as shown in the figure.



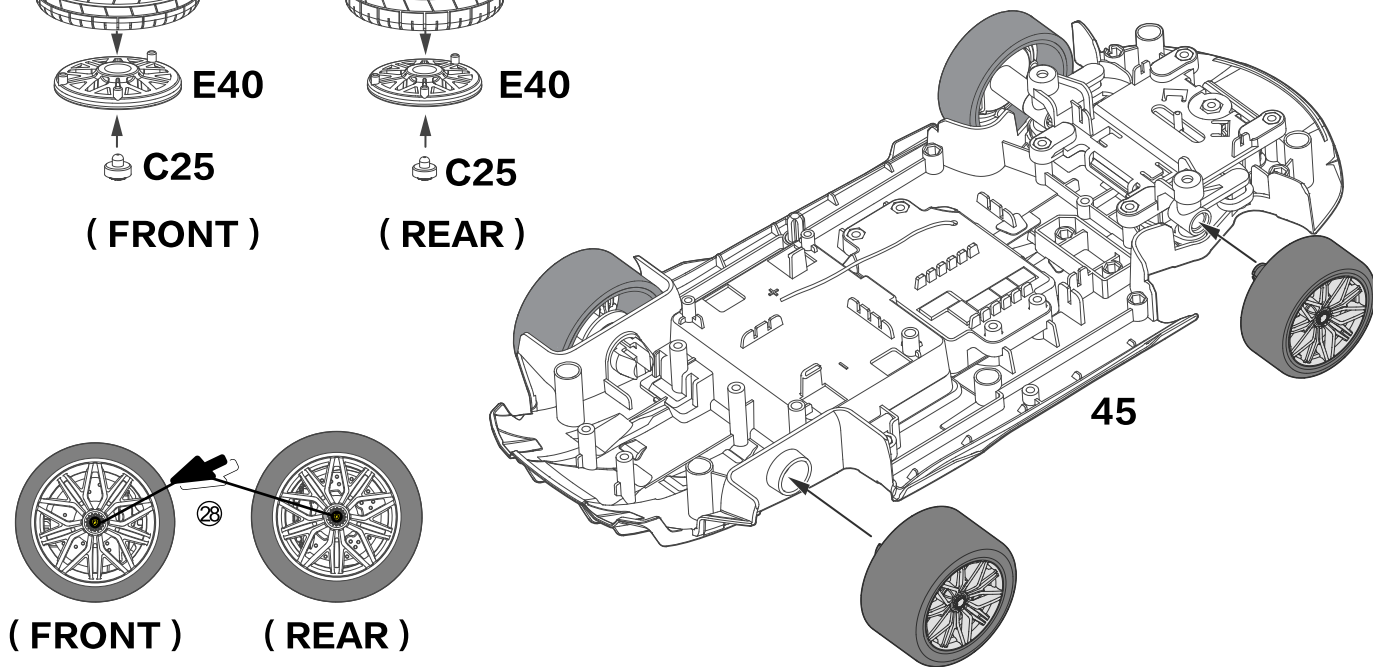
15

Install 47 and 49 respectively on the position marked on 45.
Please note that the 49 antenna should be placed in the “+” position of the battery box to ensure a good signal.



16

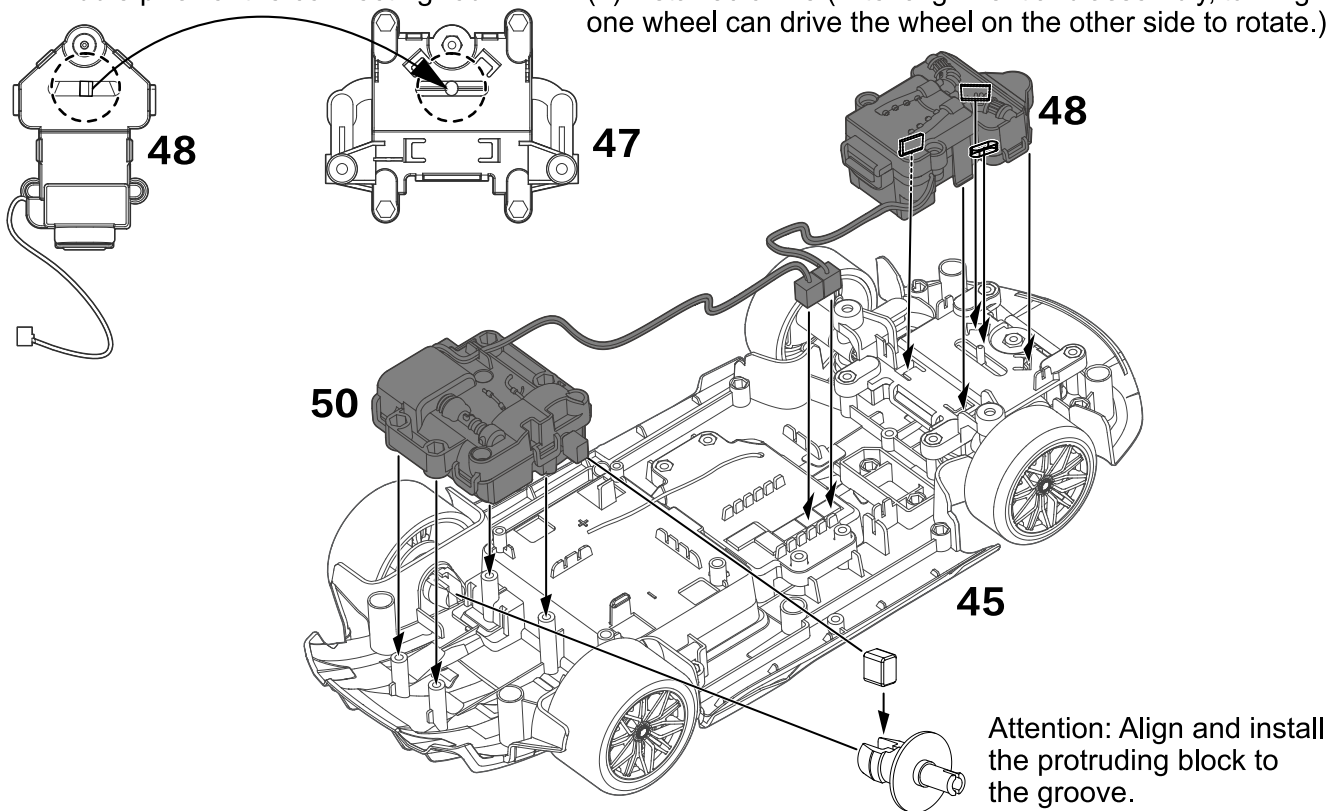
- (1) Install front and rear wheels as shown in the figure. (When installing the rear wheels, please align the inside of the tire to the buckles of 57, do not squeeze.)
- (2) Install the assembled front and rear wheels on 45.
- (3) Stickers on the corresponding position according to the serial number marked in the figures.



17

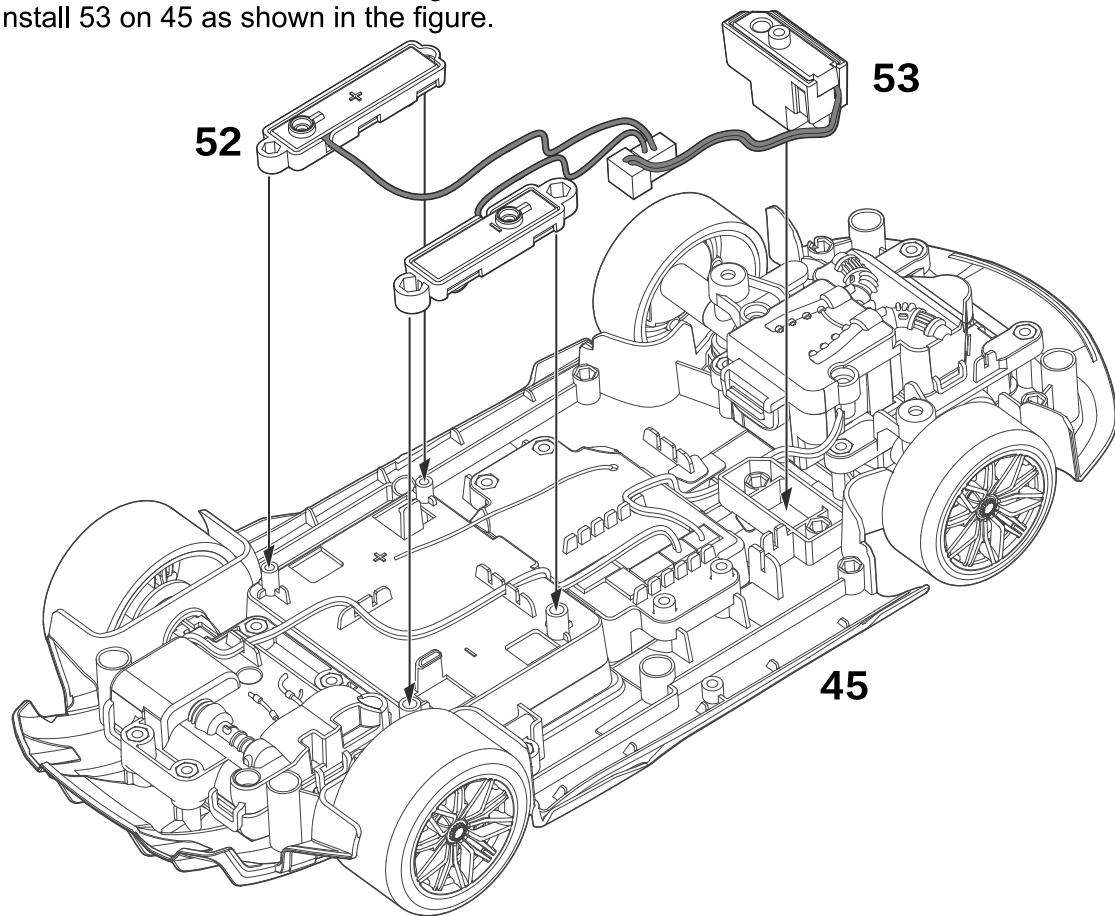
Attention: When installing the front gear box, please align the middle slot of the fan shaped gear to the middle pillar of the connecting rod.

- (1) Combine figure 47 and 48 into one model, please put the upper part and the lower part together, and then install it into the corresponding position as shown in the figure.
- (2) Install 50 on 45. (After alignment and assembly, turning one wheel can drive the wheel on the other side to rotate.)

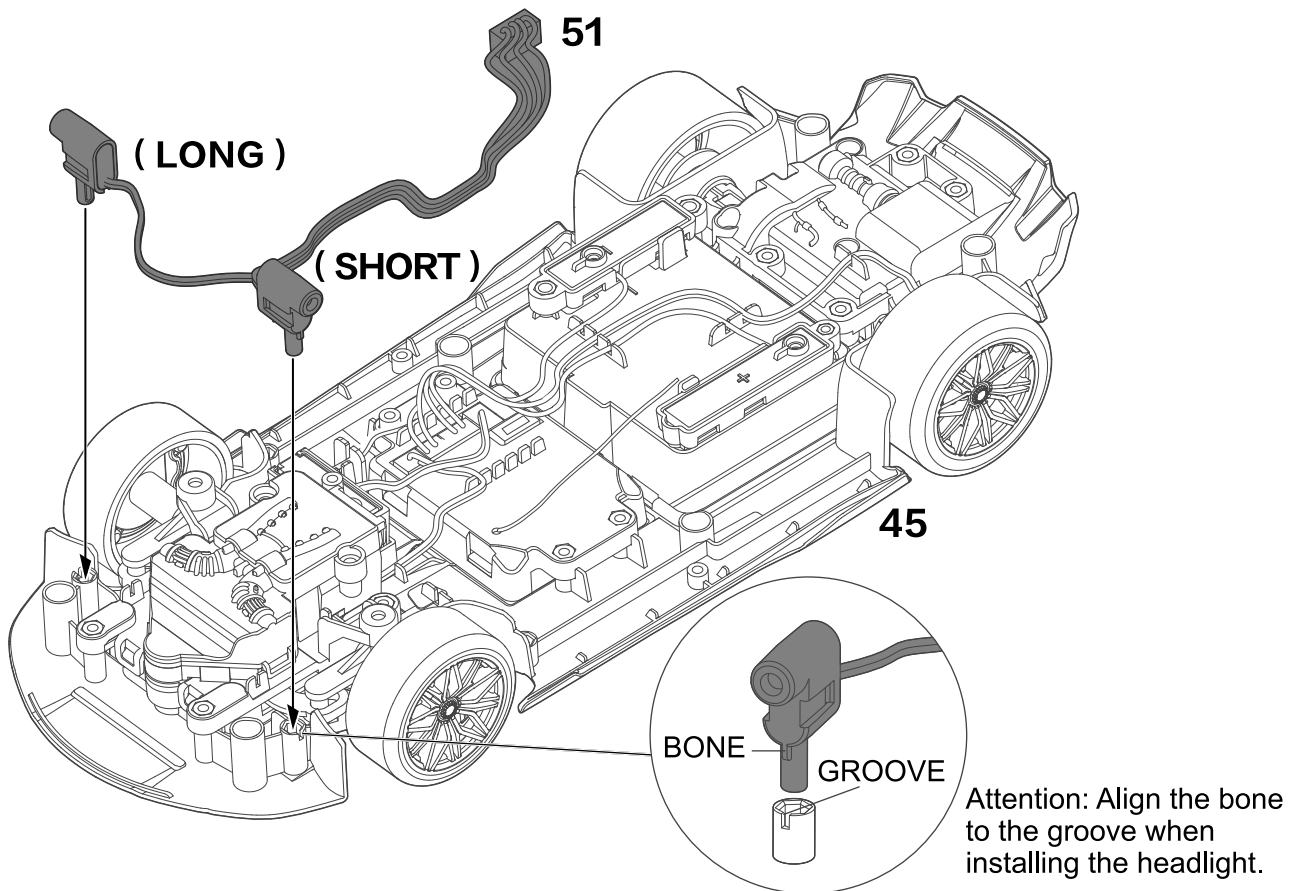


18

- (1) Install 52 on 45 as shown in the figure.
- (2) Install 53 on 45 as shown in the figure.

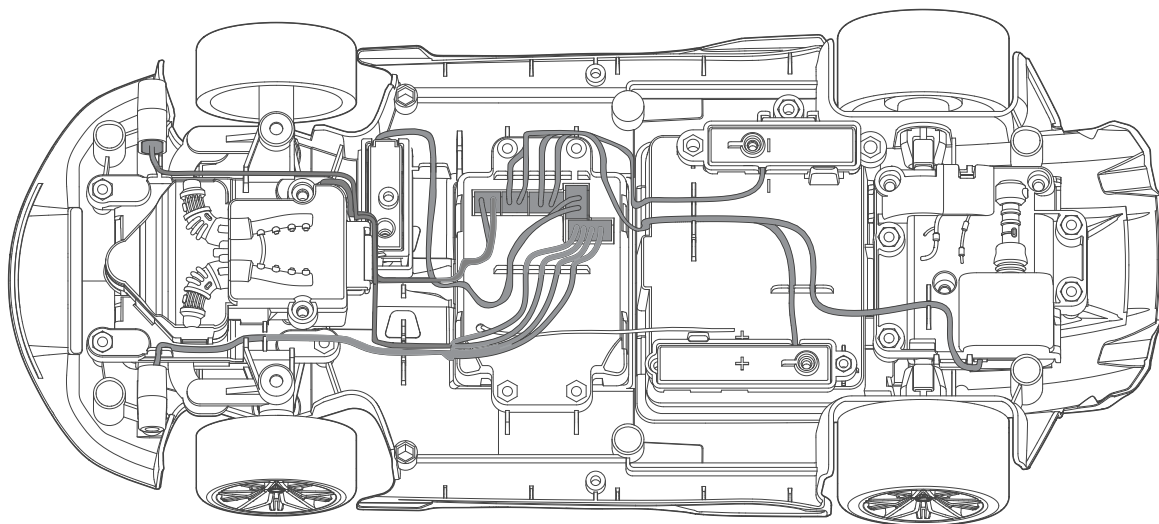


- 19** Install 51 on 45 as shown in the figure, pay attention to the length of electric wires.

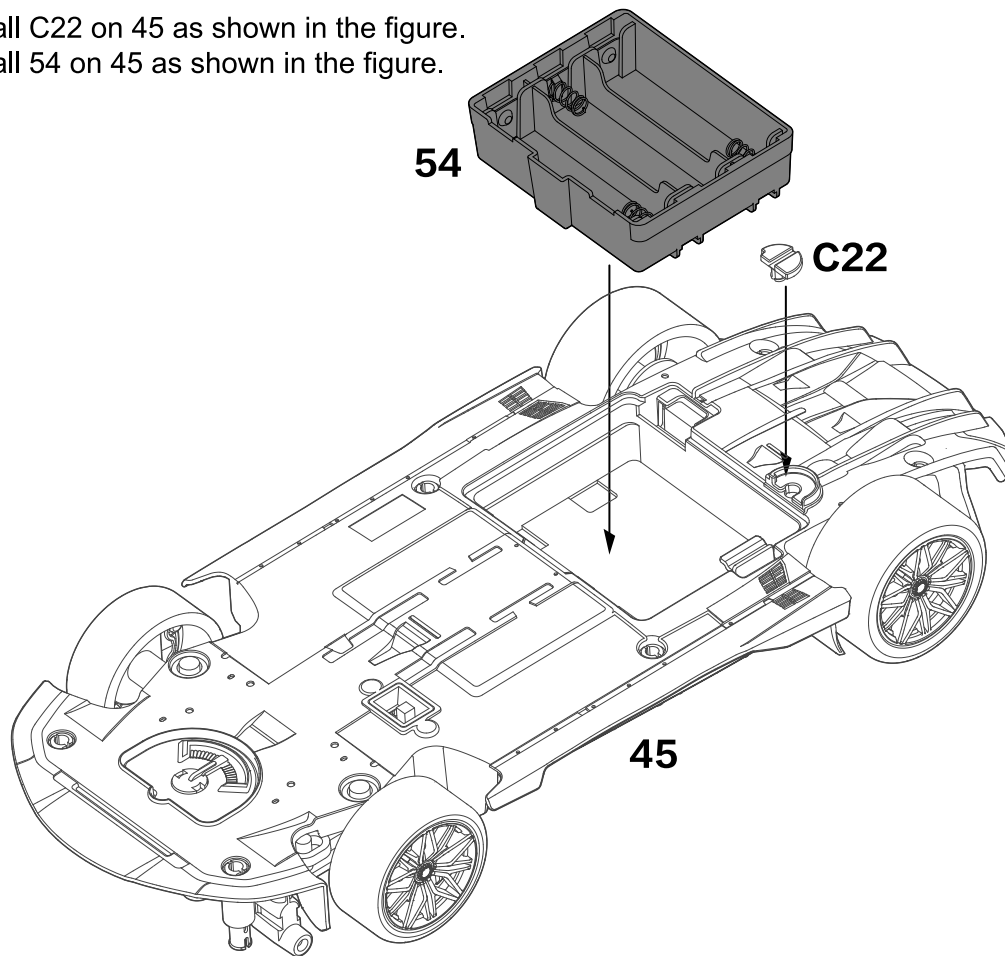


20

Please press the wire into the gap.
Plug in respectively while matching by same colours and same shapes.

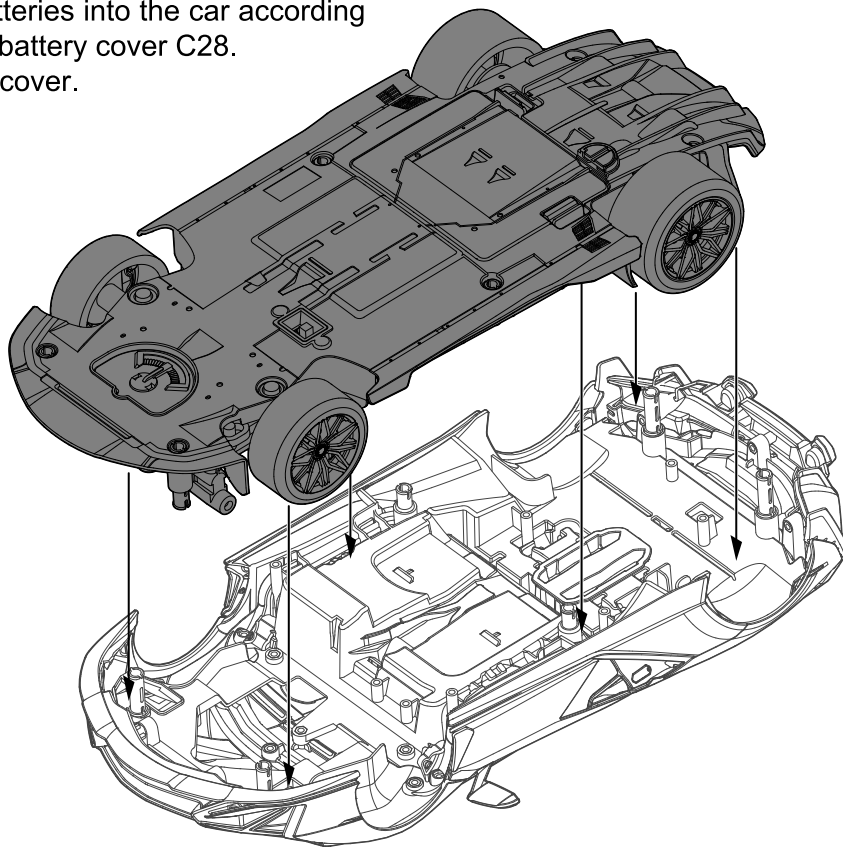
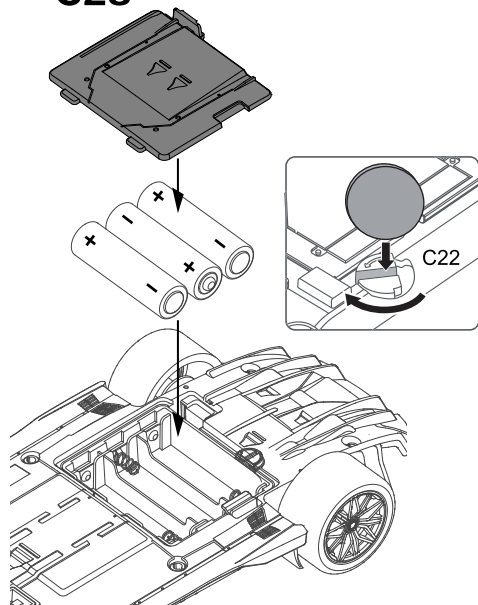


- 21** (1) Install C22 on 45 as shown in the figure.
(2) Install 54 on 45 as shown in the figure.

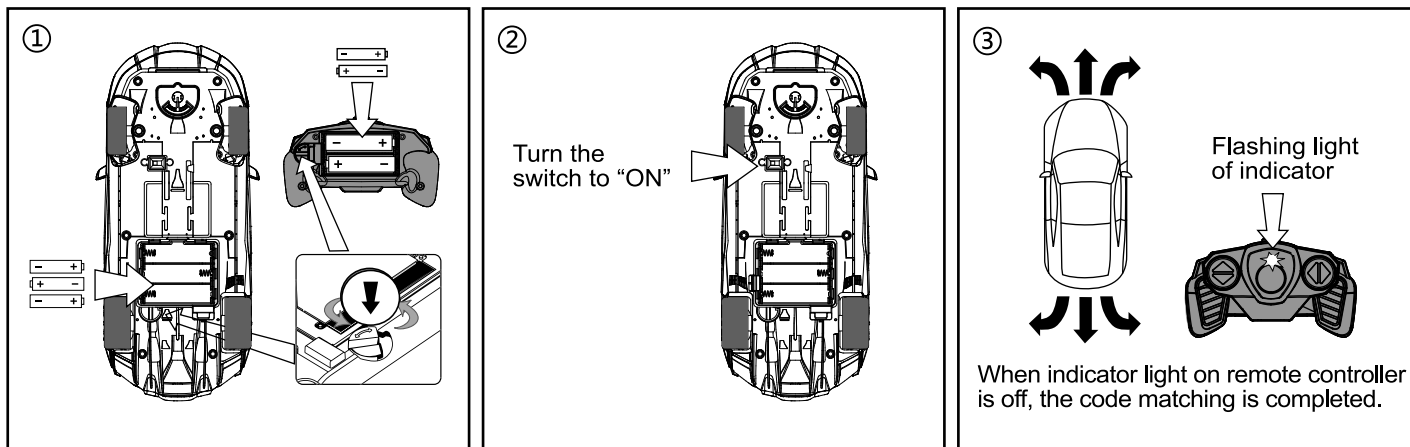


22

- (1) Combine the assembled models as shown in the figure.
- (2) Put 3 pieces of 1.5V “AA” batteries into the car according to its polarity and then close the battery cover C28.
- (3) Twist C22 to lock the battery cover.

C28

OPERATION GUIDE

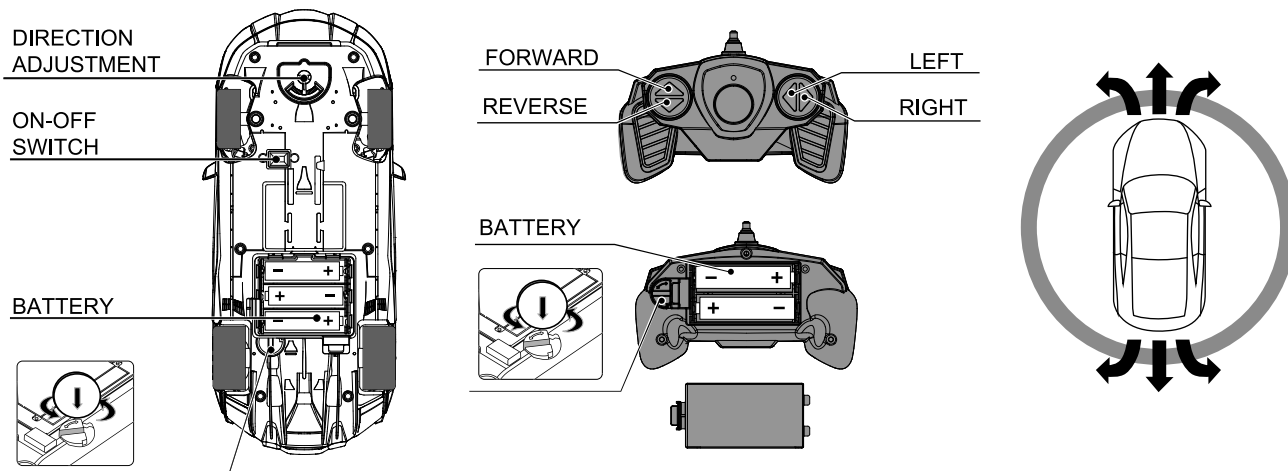


- Use a coin-like tool to twist the knob switch on battery cover to open or close it. Please refer to Figure ①.
- Open battery cover, put 3 pieces of 1.5V "AA" batteries according to the correct polarity into the car, and then close and lock the battery cover with rotary knob.
- Remote controller needs to match code with car before each use. The specific steps are as follows:
- Open battery cover, put 2 pieces of 1.5V "AA" batteries according to the correct polarity into the remote controller, and then close the lid.
Turn switch on R/C car to "ON" position, when indicator light on remote control is flashing, it is in the status of code matching, when the flashing indicator light on remote control turns off, which means the code is matched, you can control the car freely. Please refer to Figure ②③.
- 2.4GHz transmitter is compatible to control several model cars at same time without interference, provided that the pairing process is orderly done one by one following above steps. Match the code for the first car according to the steps as mentioned above and keep their power on, then match the code for the second car in the same way, and so forth for the rest of cars.

- Please turn off model car after playing.
- Adjust the direction adjustment switch to control the car running in a straight line.
- When battery of remote controller is low, the indicator light on remote controller will be dim, batteries need to be replaced.
- When battery of the car is low, the car will slow down, batteries need to be replaced.
- When it is not in use, please take the batteries out of remote controller and the car.

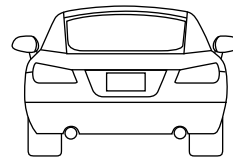
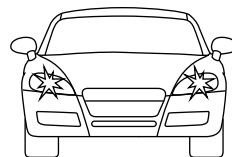
FEATURES AND FUNCTIONS

This product uses 2.4GHz communication technology, which is compatible for multi-device and multi-user, with fast response speed, high response precision, and strong anti-interference capability.



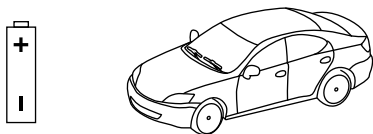
Function: Forward, Reverse, Turn Left, Turn Right, Headlight.

Feature: Authentic car styling with injection moulded body, independent suspension system.



ATTENTION

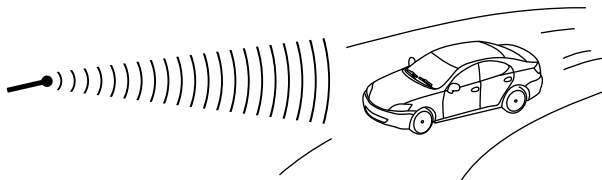
- When your vehicle starts to lose power, it may lose its functions or performance. This indicates that it's time to refresh your batteries or recharge them.



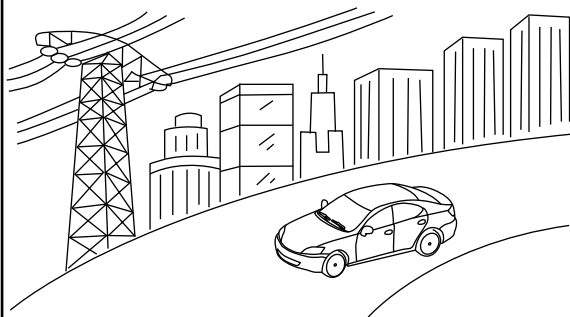
- Don't drive your vehicle in sand, through water or snow.



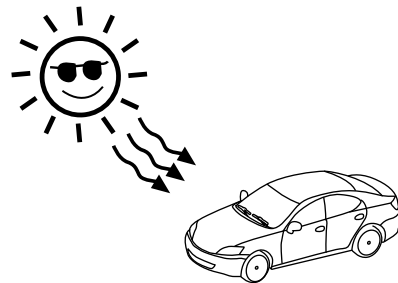
- Point the antenna of the remote control upward to the car, and control the car within the effective range, so as not to affect the play effect.



- Do not operate your car on the streets where people gather or under high voltage wires. Stay safe!



- Don't put your vehicle near heat or in direct sunlight. Always turn switches OFF after operating.



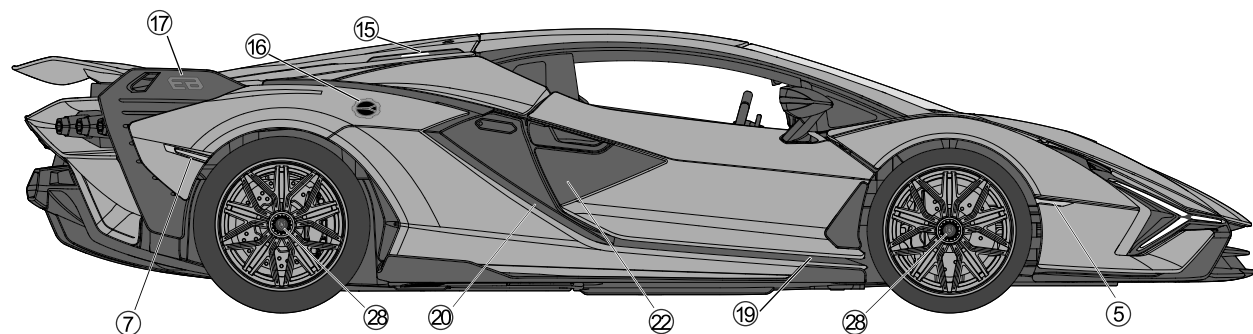
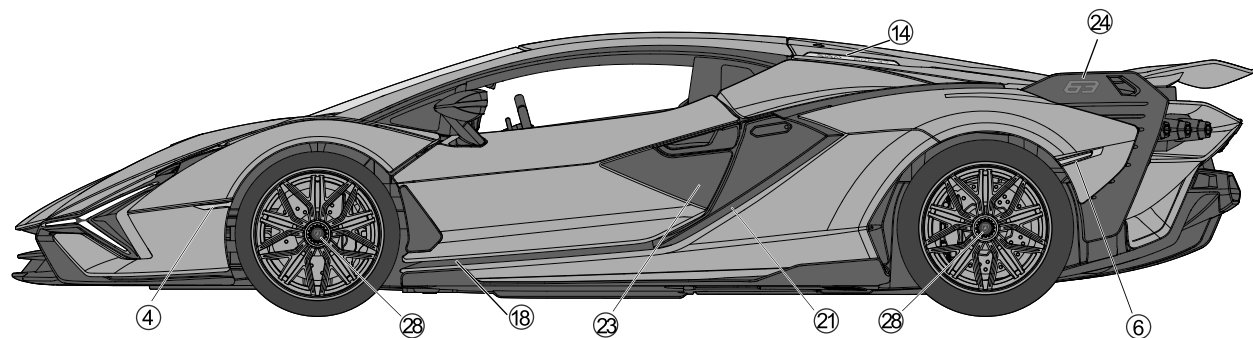
Pictures for reference only, subject to actual product.

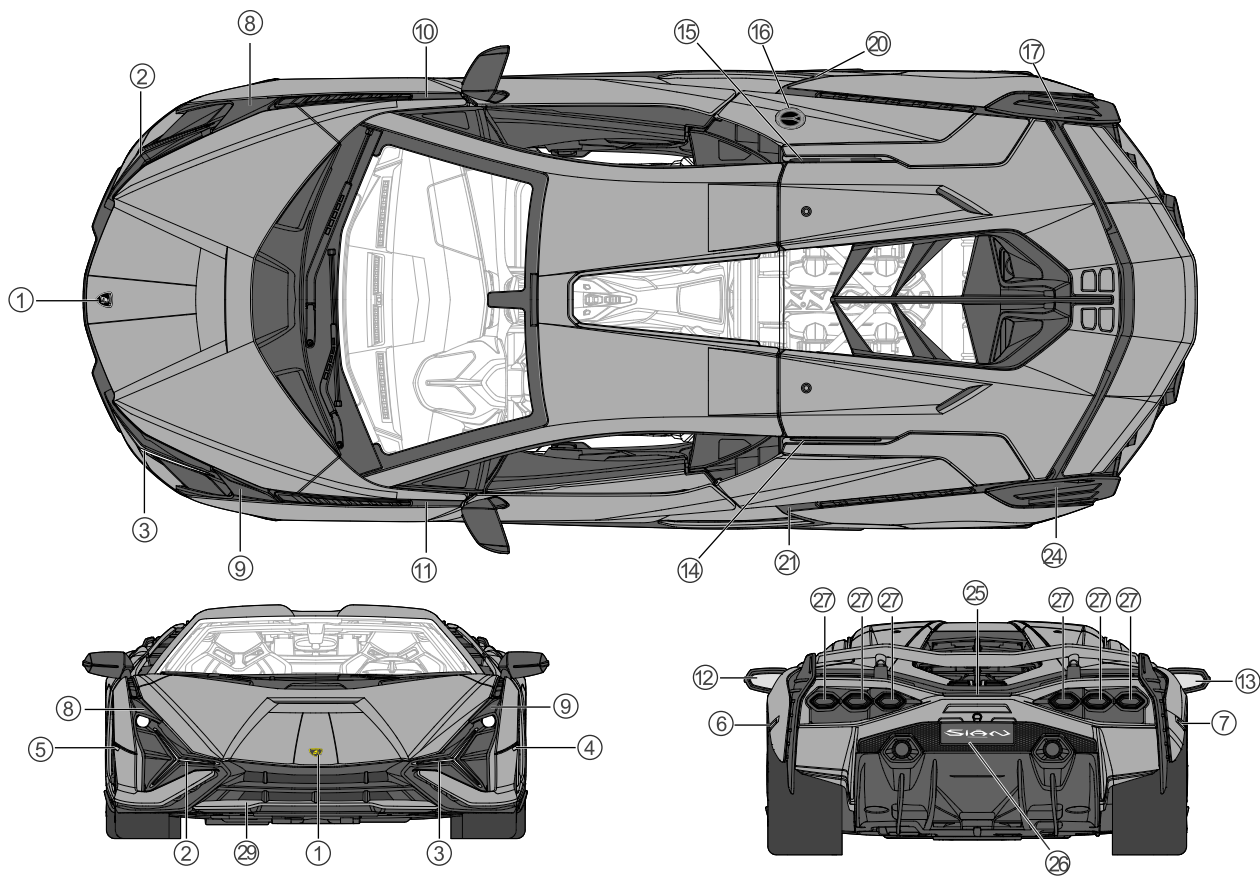
MAINTENANCE

- Remove the batteries when the unit is not in use for long periods of time.
- Clean the vehicle with a soft cloth.
- Avoid being heated or being exposed to strong sunlight.
- Keep dry.
- Regularly examine the toy for any damage to its wires, plug, enclosure and other parts and they must not be used until the damage has been repaired.

BODY LOGO

Put the stickers on the corresponding position according to the serial number.





Frequency bands: 2400MHz to 2483.5MHz

Maximum Transmitting Power (EIRP) : Not more than 10mW.

Applicable age 8 years (96 months) and above.



WARNING:

**CHOKING HAZARD-Small parts.
Not for children under 3 years.**



WARNING:

**The assembly of the product is complex, so it must be
used under adult supervision.**

The instruction has to be kept since it contains important information.



The “Lamborghini” and “Lamborghini Bull and Shield”
trademarks, copyrights, designs and models are used
under license from Automobili Lamborghini S.p.A, Italy.



Licensee: RASTAR GROUP
Manufacturer: RASTAR GROUP
Add: Xinghui Industrial Park, Xiadao Road, Shanghua,
Chenghai, Shantou, Guangdong, China.
[Http://www.rastar.com](http://www.rastar.com)