

LED Grow Planter

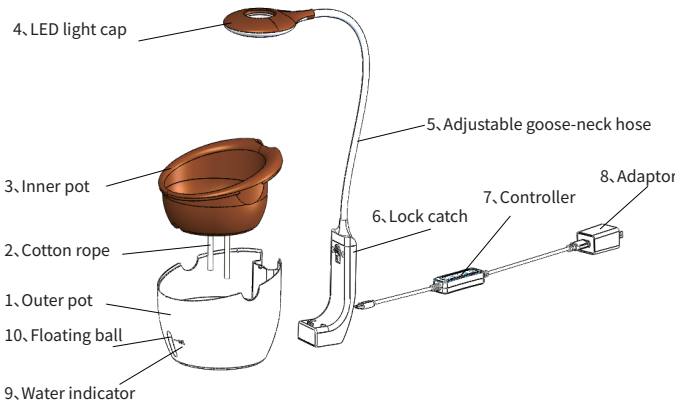


Product Spec

Model : MGL001
Size: 5.9" ★5.9" ★ 19.2"
Power: 6W
Luminous flux: ≥300lm

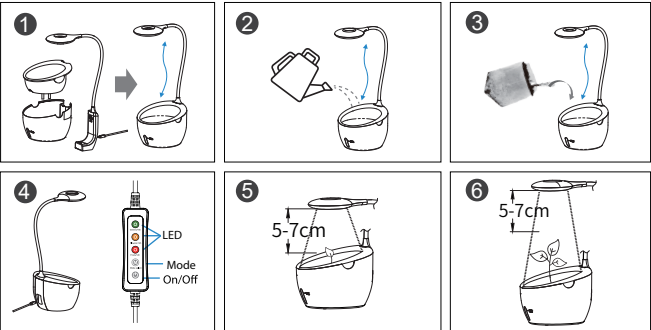
Product Name: LED grow planter
Input: 5V DC/1.3A
Color of light: White
Modes: Greens-Flowers-Fruits

Structure Drawing



MGL001

Assembly Instructions



1. LED cleaning and assembly
A: Cleaning and maintenance
(1) Prior to cleaning the device, isolate the unit by removing the cord from the device and power outlet. Avoid immersing the unit in water.
(2) Clean the pot and cotton rope with detergent. Use a cotton swab to clean the floating ball from the inner side of the pot.
(3)Wipe the device clean with a damp micro fiber cloth when necessary.
B: Removal and installation process
(1) Take out the pot; Push the lock catch up to the top gently; then push the hose connector out of Outer pot; finally push down to remove the component.
(2) The assembly and disassembly steps are reversed.
2. Pour water or nutrient solution into plant pot .
3. Fill inner pot with preferred planting soil and add the seeds. Please do not add water above the MAX level.
4. Choose the modes as the suitable modes for plants and begin to grow your baby plant!
You can choose the modes according to what types of seed you plant and choose suitable lighting hours for your plants. The modes and indicator meaning as follow:
A: The green indicator light is on when firstly plug in the power cord. Long press the power button to turn on the light.
B: AUTOMATIC SMART TIMER FOR EACH MODE LED: Modes as herbs/vegetables,flowers and fruits is corresponding to the indicator light as Green, Yellow and Red. The grow planter is automatically 16 hours on and 8 hours off on herbs/vegetables mode to make sure plants absorb enough light to do photosynthesis and enough time to rest. Automatically 14 hours on and 10 hours off on Flower mode; (2% -3% tolerance).

LED Grow Planter



- C: Long press the power button to turn off the light.
D: Suggest to grow your plant according to the plant growth rule table.

Category	Seedling stage PPFD	Vegetative stage PPFD	Fruit-bearing stage PPFD	Irradiation time (H)
Veggies		150-200		16
Flowers		20-100		14
Succulent/Dwarf plant	150-200	200-300		14
Fruits	150-300	300-400		12
Short day flower	150-250 (16H)	250-350 (10-8H)	350+ (12H)	
Long day flower	150-250 (16H)	250-350 (14H)	350+ (14H)	

Notes: Photosynthetic Photon Flux Density(PPFD): PPFD is measuring how much photons actually land on the canopy; represents the number of photons per unit time area in the visible light wavelength range, the correlation between the number of photons and photosynthesis. The unit is μmol/m2S.
d) As the plant grows, it' s necessary to adjust the height of the lamp cap. Keep the height/distance of the lamp cap and the top of the plant about 5-7cm. (See picture 5/6) .

Technical description

This product is only for indoor use. This device is suitable for growing the following plants: seedlings, flowers, herbs, succulents, etc; not suitable for macro-flora such as shrubs, trees and other larger plant species. This product uses full spectrum LED lights to support proper plant growth indoors.

Safety guidance

1. This product is only for indoor use.
2. Children should be supervised at all times and cautioned that the device is not a toy and should not be played with.

Warnings

1. Please use the adapter provided by this product, do not use other types of adapter power supply.
2. Do not add water above the MAX level so as not to rot the root phenomenon of plants.

3. Do not use if cord/plug or the outer pot is damaged. If the power cord is damaged, it must be replaced, otherwise could result in a risk of fire, electric shock, or injury to persons.
4. Be sure to keep cord/controller/adaptor away from heat, standing water and sharp edges.
5. The product is used for plant growing space. The light required by plants, the effect of planting needs to be based on necessary conditions for planting seeds, like nutrients, temperature and humidity, etc.
6. Do not use appliance for anything other than the intended use.
7. Do not disassemble unit or attempt to make any repairs yourself. Incorrect assembly or repair could result in a risk of fire, electric shock, or injury to persons when operating.
8. If you have any questions, please call customer service : TBD

Warranty Card

Product Model:	
Purchase date:	
Customer name:	
Warranty service:	
Contact details:	