

# Quick Guide

Part No.

CLED-VF2130N1  
CLED-VF2230N1

Worldwide Patents

www.ventifresh.com

- Detach the device from cable after taking it down, do not handle the product by the cable, may cause damage to the USB socket
- Do not drop the Ventifresh ECO device to floor at neither power on or off. May cause damage to the internal motor fan or break the fan blade.
- Please plug in the micro USB cable with care, do not force the plug when it's not set at the right direction.
  - Avoid looking into the UV light while the product is running.
  - The product has passed photo-biological safety tests.
  - Do not rinse with or soak in water, will cause product damage and void warranty.
  - Unplug from power before handling.
  - Do not apply cleaning chemicals to the product, may cause malfunction or surface paint damage.

product performance stated based on repeated user tests conducted by our company, actual user experience may vary depending on personal uses and different locations.



Install Gel Pad



Wiseome Inc.  
3F, No.8-3, Wenchang 3rd St., Guishan, Taoyuan 333, Taiwan ( R.O.C.)  
Contact: support-VF@ventifresh.com

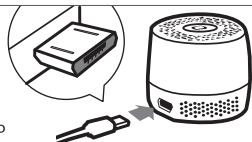
LED Light

Control Button

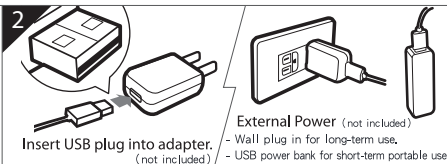
Micro USB Port

Function modes

- Plug in : Standby - mood lighting
- Press 1 time : Turbo - blue light
- Press 2 times : Quite - green light
- Press 3 times : Back to Standby



Insert Micro USB plug to  
Ventifresh ECO Micro USB port.



Insert USB plug into adapter.  
(not included)

External Power (not included)  
- Wall plug in for long-term use.  
- USB power bank for short-term portable use.



Install or place Ventifresh ECO at the use  
places. (container, box, near toilet, desk.....etc.)



- Stick Gel Pad or Magnet firmly to the bottom of the device.
- Attach the device to a clean, flat, smooth surface.

One year product warranty  
from the date of purchase



<https://goo.gl/6pjMBE>

Two Options of Activating Warranty :

- Scan the QR code above, log in your purchase information in 3 easy steps.
- From the date on the proof of purchase (invoice, receipt, etc.). Without the proof, the shipping date linked to the S/N code on the package will be used to calculate the validity period.  
(Product damages caused by mishandling may not be covered by free services, and the required repair or replacement may be charged.)