



MN4KP1 User Manual

About this Manual

Congratulations on purchasing the Minolta MN4KP1 HD Camcorder!

The contents of this manual are subject to change without notice. Note that the example screens and product illustrations shown in this User's Guide may differ somewhat from the screens and configuration of the actual camera.

Copyright

This manual contains proprietary information protected by copyright. All rights are reserved. No part of this manual may be reproduced by any mechanical, electronic or other means, in any form, without prior written permission of Elite Brands Inc. © 2021.

FEDERAL COMMUNICATIONS COMMISSION INTERFERENCE STATEMENT

This equipment has been tested and found to comply with the limits for a Class B digital device, pursuant to Part 15 of the FCC Rules. These limits are designed to provide reasonable protection against harmful interference in a residential installation. This equipment generates, uses and can radiate radio frequency energy and, if not installed and used in accordance with the instructions, may cause harmful interference to radio communications. However, there is no guarantee that interference will not occur in a particular installation. If this equipment does cause harmful interference to radio or television reception, which can be determined by turning the equipment off and on, the user is encouraged to try to correct the interference by one or more of the following measures:

- Reorient or relocate the receiving antenna.
- Increase the separation between the equipment and receiver.
- Connect the equipment into an outlet on a circuit different from that to which the receiver is connected.
- Consult the dealer or an experienced radio/TV technician for help.

CAUTION:

Any changes or modifications not expressly approved by the party responsible for compliance could void the user's authority to operate the equipment.

This device complies with Part 15 of the FCC Rules. Operation is subject to the following two conditions:

- (1) This device may not cause harmful interference and
- (2) This device must accept any interference received, including interference that may cause undesired operation.

RF Exposure Warning

This equipment complies with FCC RF radiation exposure limits set forth for an uncontrolled environment. This equipment must be installed and operated in accordance with provided instructions and must not be co-located or operating in conjunction with any other antenna or transmitter. End-users and installers must

be provided with antenna installation instructions and transmitter operating conditions for satisfying RF exposure compliance.

FCC: SAR standard Value: 1.6 W/Kg, Maximal Measure: 0.4 W/kg

CE Mark Warning

This is a Class B product, in a domestic environment, this product may cause radio interference, in which case the user may be required to take adequate measures.

Safety and Handling Precautions

Camera Information

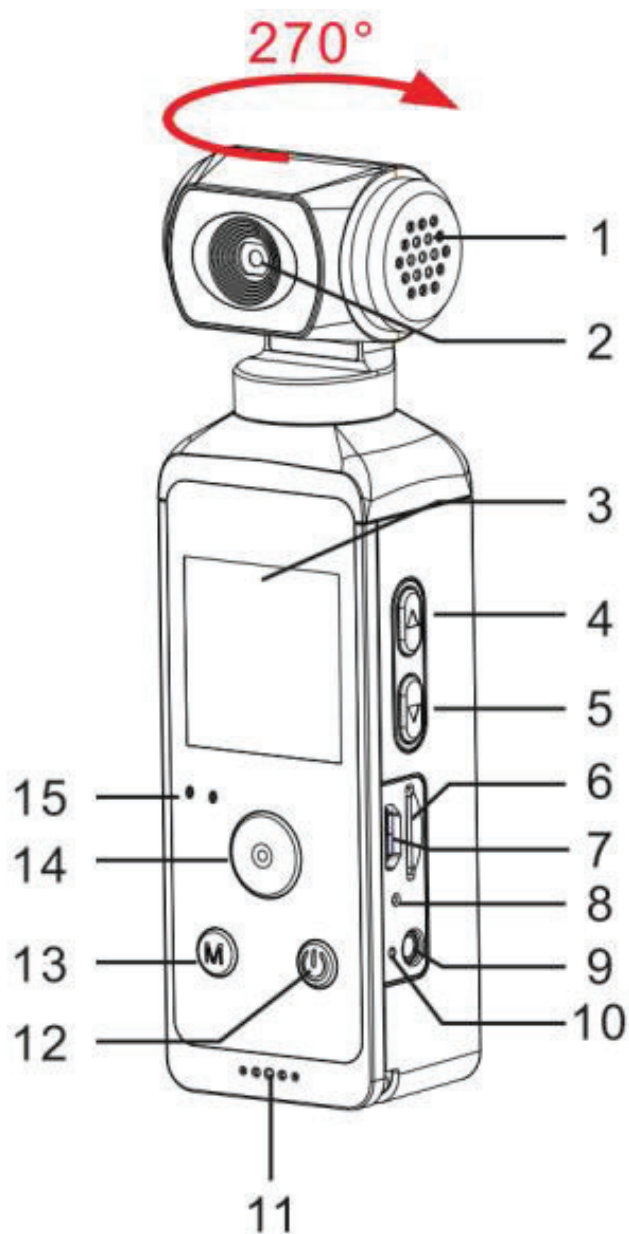
- Do not disassemble or attempt to service the camera yourself.
- Do not expose the camera to moisture, or extreme temperatures.
- Allow the camera to warm up when moving from cold to warm temperatures.
- Do not touch and put pressure on the camera lens.
- Do not expose the lens to direct sunlight for extended periods.
- Do not use abrasive chemicals, cleaning solvents or strong detergents to clean the product. Wipe the product with a slightly damp soft cloth.
- Do not use the flash or LED Light near a person's eyes to prevent possible eye injury.
- To prevent you from falling over or resulting in traffic accident, please do not use the camera while you are walking, driving or riding a vehicle.
- Do not subject the LCD screen to impact.
- To prevent the risk of fire or electric shock, do not expose this appliance to rain or moisture.

USB adapter Information

- Do not expose the adapter to high temperatures or moisture places. Otherwise, it may cause fire or electric shock.
- Do not attempt to repair, disassemble, change or transform the adapter.
- Avoid sudden changes in temperature, which may cause condensation on the adapter's internal surfaces. Please do not use it immediately in this situation.
- Do not touch the plug with wet hands. Otherwise, it may cause electric shock.
- Do not use the travel voltage converter or AC/DC power inverter. Otherwise, it may cause damage, overheating, malfunction or fire to the camera.

1.1 Camcorder Interface

| |
|---------------------|
| 1. Speaker |
| 2. Lens |
| 3. LCD Screen |
| 4. Up / WiFi |
| 5. Down |
| 6. Memory Card Slot |
| 7. Micro USB Port |
| 8. Reset Pinhole |
| 9. Mic In |
| 10. Charging LED |
| 11. Mic |
| 12. Power |
| 13. Mode |
| 14. OK / Record |
| 15. LED Indicator |



1.2 Button Function Description

| Function | Description |
|---------------------|---|
| Power | Press and hold for 3 seconds to power on or off. Tap once to turn off or on the LCD screen. |
| Mode | Press to cycle between Video, Photo, Slow Motion, Playback and Setup modes. |
| OK Record Photo | Press to enter sub menus and to select menu options In Video: Press to start and stop recording video. In Photo: Press to take a picture. In Slow Motion: Press to start and stop recording. In Video Playback: Press to start and stop the video. |
| Up | Press to activate WiFi, press again to deactivate WiFi. In Menus: Use the UP and Down buttons to scroll through menus and options. In Video, Photo and Slow Motion Modes: Press and hold the Up button to zoom in. In Playback Mode: Press to go to the previous media. |
| Down | In Menus: Use the UP and Down buttons to scroll through menus and options. In Video, Photo and Slow Motion Modes: Press and hold the Down button to zoom out. In Playback Mode: Press to go to the next media. |
| Tripod Mount | Mount port for attaching to a tripod nut. |
| Speaker | Built-in speaker output for playback of video files when audio recording is enabled. |
| Lens | Front capture device for all video and photo. |

2. First Use

2.1 Inserting the Memory Card

Insert the included Micro SD memory card to record and store your videos and photos. When the battery is low, media stored on the memory card will not be erased. Please insert the SD memory card by following the steps below:

1. Insert the memory card in the slot on the side of the camcorder. Ensure that the metal contacts are inserted first. Push the memory card in until you hear an audible click.

The memory card can only be inserted in one way. Do not force the card in if it will not go in smoothly.

2. To remove the memory card, simply push in and the card will eject back out.

NOTE:

- Please format the memory card before using the camcorder (Caution, this will erase all data on the card).
- Do not remove or insert the memory card when recording. It may damage the card or cause data loss.
- Memory card rating must be Class 10 or above.

2.2 Charging the Battery

Connect your camcorder to the included AC adaptor with the USB cable provided for charging. Insert the small end of the USB plug into the camcorder's port, and the larger end in to the included AC adaptor. The status LED will light up Red when charging.

2.3 Powering the Camcorder On/Off

Hold the POWER button for 3 seconds to power the camcorder on. To power the camcorder off, press and hold the POWER button for a further 3 seconds.

If the camcorder's battery is low, a "Low Power" message will display on the screen and it will automatically shut down within a few seconds to prevent memory corruption or loss.

2.4 Switching Modes

Press the MODE button to cycle between Video, Photo, Slow Motion, Playback and Setup Modes. The corresponding mode will be displayed in the top left corner of the screen.

2.5 Connecting to a Computer

Your camcorder can connect to a computer to transfer photo and video files for viewing and editing. Your camcorder can also be used as a webcam. Simply connect the small end of the USB cable into the camcorder, then connect the large end of the USB cable into the computer. Once connected and powered on, the camcorder's screen will show three options, USB Mode, PC Camera and Charging Mode. Use the UP or DOWN buttons to select which mode you want to enter. Then press the OK button to enter the selected mode.

USB Mode will allow you transfer photo and video files to your computer. PC Camera mode will allow your camcorder to be used as a webcam. Charging mode will allow the camcorder to function as usual while being charged by the computer.

2.6 Connecting to a TV

Your camcorder can connect to a TV to view photo and video files. Simply connect the small end of the USB cable into the camcorder, then connect the large end of the USB cable into the TV. Once connected and powered on, the camcorder's screen will show three options, USB Mode, PC Camera and Charging Mode. Use the UP or DOWN buttons to select which mode you want to enter. Then press the OK button to enter the selected mode. Please note, PC Camera mode might not work on some TVs.

2.7 Lens Rotation

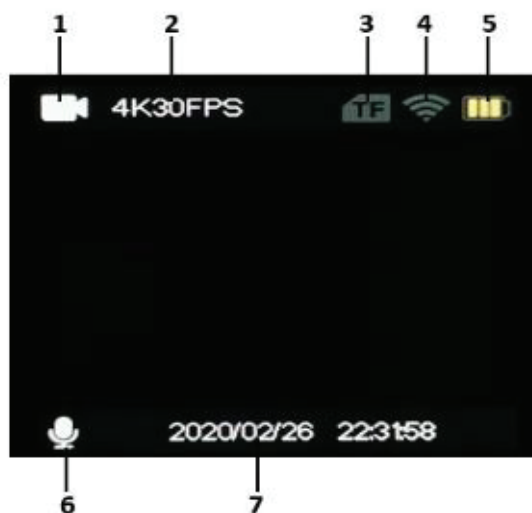
Your camcorder lens can be rotated 270 degrees. To rotate the lens simply hold the camcorder body in one hand and grip the sides of the lens with the other. Simply rotate the lens clockwise or counterclockwise until it is at the desire position.

Please note: do not force the lens to rotate after the stopping point, this can damage the camcorder.

2.8 Video Mode

Press the MODE button to switch to Video Mode. The meaning of each icon within Video Mode is explained in the table below:

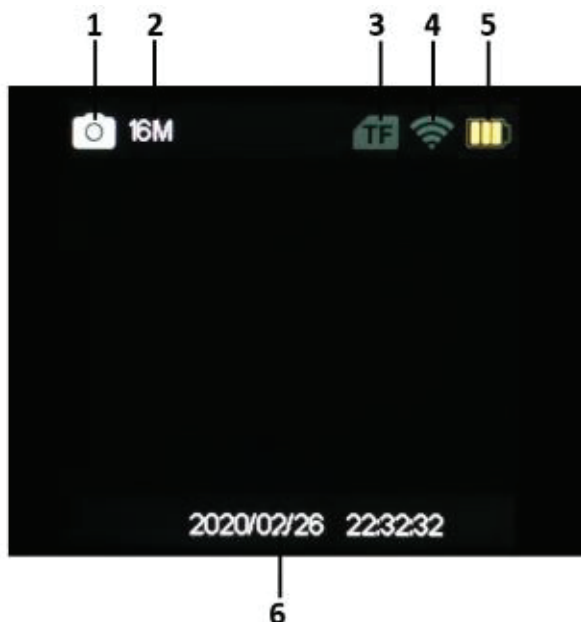
| | |
|----------------------------|--------------------------|
| 1) Video Mode | 5) Battery Level |
| 2) Video Size (Resolution) | 6) Sound Recording |
| 3) Memory Card Inserted | 7) Current Date and Time |
| 4) WiFi Indicator | |



2.9 Photo Mode

Press the MODE button to switch to Photo Mode. The meaning of each icon within Photo Mode is explained in the table below:

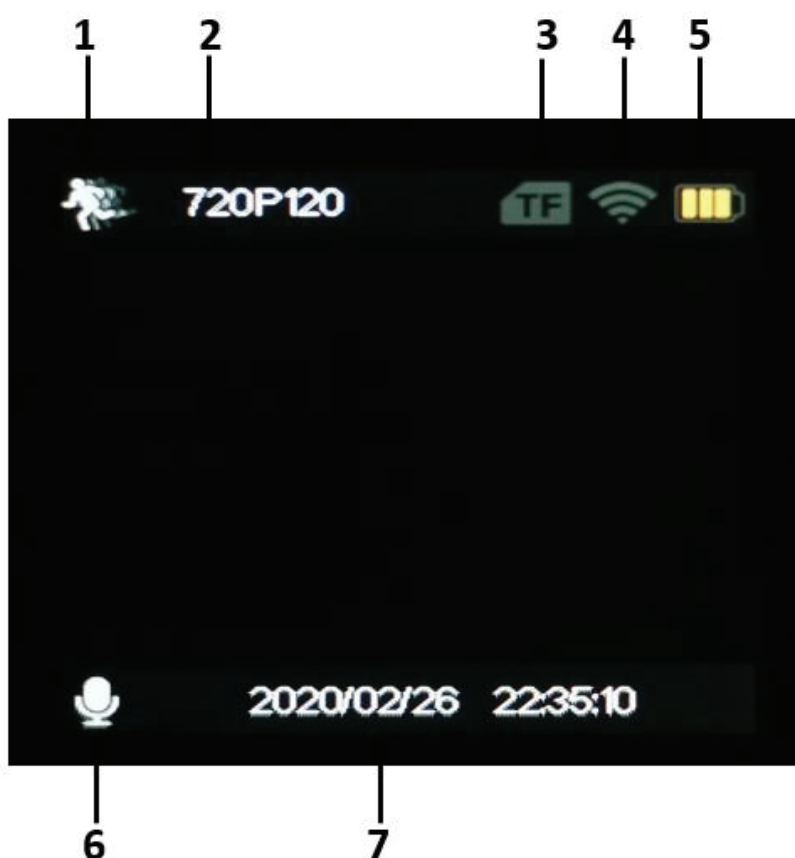
| | | |
|----------------------------|-------------------------|--------------------------|
| 1) Photo Mode | 3) Memory Card Inserted | 5) Battery Level |
| 2) Photo Size (Resolution) | 4) WiFi Indicator | 6) Current Date and Time |



2.10 Slow Motion Mode

Press the MODE button to switch to Video Mode. The meaning of each icon within Slow Motion Mode is explained in the table below:

| | |
|----------------------------|--------------------------|
| 1) Slow Motion Mode | 5) Battery Level |
| 2) Video Size (Resolution) | 6) Sound Recording |
| 3) Memory Card Inserted | 7) Current Date and Time |
| 4) WiFi Indicator | |



2.11 Using the Zoom Function

This camcorder has a digital zoom function. To operate the zoom function, press and hold the UP button to zoom in closer to the subject, and press and hold the DOWN button to zoom away from the subject.

3. Using the Camcorder

3.1 Video Recording

Power the camcorder on and it will be in video recording mode, press the OK button to start recording. Press the OK button again to stop recording. You may press the MODE button to switch to another mode. A camcorder icon will appear in the top left-hand corner of the screen when you are in Video mode.

1. Line up your shot by looking at the LCD screen to see what is in view.
2. Hold the camcorder steady and press the OK button to begin recording.
3. When recording begins, a rolling timer will display in white on the bottom of the screen. This indicates the recorded video time elapsed.
4. Press the OK button to stop recording.
5. The recorded video files will automatically save onto the inserted memory card.

3.1.1 Video Resolution (Video Size)

Your camcorder has a number of preset resolutions and frames per second rates.

1. In Video Mode press the MODE button until you enter the Options Mode.
2. Press the OK button to enter Video Setup mode.
3. Select '*Video Resolution*' using the UP or DOWN buttons and press the OK button to enter the '*Video Resolution*' submenu.
4. Press the UP or DOWN buttons to navigate the menu and press the OK button to confirm your selected setting (*4K 30fps, 2.7K 30fps, 1080P 60fps, 1080P 30fps, 720P 120fps, 720P 60fps, 720P 30fps*). A higher resolution and faster frames per second rate will produce a higher quality and larger video file.

3.1.2 Recording Sound

This option allows you record sound with the video.

1. In Video Mode press the MODE button until you enter the Options Mode.
2. Press the OK button to enter Video Setup mode.
3. Select '*Recording Sound*' using the UP or DOWN buttons
4. Press the OK button to turn Sound Recording On or Off, if the box has a check mark then sound recording is On.

3.1.3 Time-Lapse

This feature allows you to capture long sequences of events in a much shorter time period.

1. In Video Mode press the MODE button until you enter the Options Mode.
2. Press the OK button to enter Video Setup mode.

3. Select '*Time-Lapse*' using the UP or DOWN buttons and press the OK button to enter the '*Time-Lapse*' submenu.
4. Press the UP or DOWN buttons to navigate the menu, and press the OK button to confirm your selected setting (*Off, Interval of 0.5 Seconds, 1 Second, 2 Seconds, 5 Seconds, 10 Seconds, 30 Seconds, 60 Seconds*).

NOTE: By selecting '*10 Seconds*' the camera will capture one photo every 10 seconds and create a time-lapse video. To disable Time-Lapse recording, select '*Off*' in this submenu.

3.1.4 Loop Recording

This function allows you to set a maximum duration for each video clip recorded.

1. In Video Mode press the MODE button until you enter the Options Mode.
2. Press the OK button to enter Video Setup mode.
3. Select '*Loop Recording*' using the UP or DOWN buttons and press the OK button to enter the '*Loop Recording*' submenu.
4. Press the UP or DOWN buttons to select the required loop duration option (*Off, 2 Minutes, 3 Minutes, 5 Minutes*), and press the OK button to confirm your selected option.

Once you select an option, your camcorder will record video clips in this interval only. Once this duration is reached, the camcorder will seamlessly end recording and begin recording a new video file.

3.1.5 Slow Motion

This function sets the frame rate of the recorded video to a much slower rate.

1. In Video Mode press the MODE button until you enter the Options Mode.
2. Press the OK button to enter Video Setup mode.
3. Select '*Slow Motion*' using the UP or DOWN buttons and press the OK button to enter the '*Slow Motion*' submenu.
4. Press the UP or DOWN buttons to navigate the menu, and press the OK button to confirm your selected setting (*1080P 60fps, 720P 120fps*).

3.1.6 EIS (Electronic Image Stabilization)

This setting enables image capture in shaky or low-light settings by electronically eliminating motion blur and canceling shake.

1. In Video Mode press the MODE button until you enter the Options Mode.
2. Press the OK button to enter Video Setup mode.
3. Select '*EIS*' using the UP or DOWN buttons
4. Press the OK button to turn Electronic Image Stabilization On or Off, if the box has a check mark then Electronic Image Stabilization is On.

3.2 Photo Shooting

Power the camcorder on and press the MODE button to switch to Photo mode.

1. Line up your shot by looking at the LCD screen to see what is in the shot.
2. Hold the camera steady and press the OK button to capture a photo.
3. The status LED will blink Blue once when a photo is taken.

3.2.1 Photo Resolution (Photo Size)

This function sets the photo resolution. The higher the resolution, the greater the photo quality and the larger the file size of the photo.

1. In Photo Mode press the MODE button until you enter the Setup Mode.
2. Press the OK button to enter Options mode.
3. Press the MODE button to enter Photo Setup Mode.
4. Select '*Photo Resolution*' using the UP or DOWN buttons and press the OK button to enter the '*Photo Resolution*' submenu.
5. Press the UP or DOWN button to select a resolution, and press the OK button to confirm the selected photo resolution (*2MP, 5MP, 8MP, 12MP, 16MP*).

3.2.2 Timed (Self-Timer)

This function determines the time delay before a photograph is captured. This setting can be used by photographers to take photographs of themselves.

1. In Photo Mode press the MODE button until you enter the Setup Mode.
2. Press the OK button to enter Options mode.
3. Press the MODE button to enter Photo Setup Mode.
4. Select '*Timed*' using the UP or DOWN buttons and press the OK button to enter the '*Timed*' submenu.
5. Press the UP or DOWN buttons to navigate the menu, and press the OK button to confirm your selected option (*Off, 3 Seconds, 5 Seconds, 10 Seconds, 20 Seconds*).

3.2.3 Auto (Auto-Capture)

This feature allows you to capture a single photo at a set interval. It will continue to capture a single photo after each time interval until stopped.

1. In Photo Mode press the MODE button until you enter the Setup Mode.
2. Press the OK button to enter Options mode.
3. Press the MODE button to enter Photo Setup Mode.
4. Select '*Auto*' using the UP or DOWN buttons and press the OK button to enter the '*Auto*' submenu.
5. Press the UP or DOWN buttons to navigate the menu, and press the OK

button to confirm your selected option (*Off, 3 Seconds, 5 Seconds, 10 Seconds, 15 Seconds, 20 Seconds, 30 Seconds*)

Note: By selecting **10 Seconds**, the camcorder will capture a single photo every 10 seconds. Each photo will be saved as a separate file on the memory card. When this feature is active, press the OK button to start the countdown to the first photo capture. A countdown will show on the bottom of the screen. To stop taking additional pictures, press the OK button.

3.2.4 Drama Shot (Photo Burst)

This function allows to you capture consecutive photos with one click of the OK button.

1. In Photo Mode press the MODE button until you enter the Setup Mode.
2. Press the OK button to enter Options mode.
3. Press the MODE button to enter Photo Setup Mode.
4. Select '*Drama Shot*' using the UP or DOWN buttons and press the OK button to enter the '*Drama Shot*' submenu.
5. Press the UP or DOWN buttons to navigate the menu, and press the OK button to confirm your selected setting (*Off, 3 Photos per Shot, 5 Photos per Shot, 10 Photos per Shot*).

3.3 Slow Motion Recording

Power the camcorder on and it will be in video recording mode, press the MODE button twice to switch to Slow Motion Mode. Press the OK button to start recording. Press the OK button again to stop recording. You may press the MODE button to switch to another mode.

1. Line up your shot by looking at the LCD screen to see what is in view.
2. Hold the camcorder steady and press the OK button to begin recording.
3. When recording begins, a rolling timer will display in white on the bottom of the screen. This indicates the recorded video time elapsed.
4. Press the OK button to stop recording.
5. The recorded video files will automatically save onto the inserted memory card.

3.4 Options Menu

Basic options can be changed in the Options menu. These include exposure, white balance and frequency. Power the camera on and press the MODE button to switch to Option mode.

3.4.1 Exposure

This function adjusts the frame brightness in your photograph.

1. Press the MODE button until you enter the Options Mode.
2. Press the OK button to enter Options mode.
3. Press the MODE button twice to enter Options Setup Mode.
4. Select '*Exposure*' using the UP or DOWN buttons and press the OK button to enter the '*Exposure*' submenu.
5. Press the UP or DOWN buttons to navigate the menu, and press the OK button to confirm your selected exposure mode (-3, -2, -1, 0, +1, +2, +3).

3.4.2 White Balance

White Balance changes the color of light in your pictures, making it seem warmer or cooler depending on how the light you're shooting in affects the frame.

1. Press the MODE button until you enter the Options Mode.
2. Press the OK button to enter Options mode.
3. Press the MODE button twice to enter Options Setup Mode.
4. Select '*White Balance*' using the UP or DOWN buttons and press the OK button to enter the '*White Balance*' submenu.
5. Press the UP or DOWN buttons to navigate the menu, and press the OK button to confirm your selected setting (*Auto, Sunny, Cloudy, Incandescent Light, Fluorescent Light*).

3.4.3 WiFi

This option activates the WiFi connection, this allows you to control the camcorder from the app on your smartphone.

1. Press the MODE button until you enter the Options Mode.
2. Press the OK button to enter Options mode.
3. Press the MODE button twice to enter Options Setup Mode.
4. Select '*WiFi*' using the UP or DOWN buttons.
5. Press the OK button to turn WiFi On. The WiFi name and password will appear on the screen, press the UP button to exit WiFi. Connecting to WiFi and app instructions can be found in section 3.7.1.

3.4.4 Image Rotation

This option will flip the recorded videos and images 180 degrees.

1. Press the MODE button until you enter the Options Mode.
2. Press the OK button to enter Options mode.
3. Press the MODE button twice to enter Options Setup Mode.
4. Select '*Image Rotation*' using the UP or DOWN buttons.
5. Press the OK button to turn Image Rotation On or Off, if the box has a check mark then image rotation is activated.

3.4.5 Driving Mode (Auto-Delete)

This feature will allow you to record video when the memory card is full, the new recording will overwrite the earliest recording. **The earliest recording will be deleted and cannot be undone.**

1. Press the MODE button until you enter the Options Mode.
2. Press the OK button to enter Options mode.
3. Press the MODE button twice to enter Options Setup Mode.
4. Select '*Driving Mode*' using the UP or DOWN buttons.
5. Press the OK button to turn Driving Mode On or Off, if the box has a check mark then auto-delete is activated.

Note: when Driving Mode is activated, the camcorder will automatically start recording when powered on.

3.4.6 Light Source Frequency (Power Frequency)

This function sets the frequency of the camcorder from 50Hz to 60Hz.

Please check the frequency of your location and set accordingly.

1. Press the MODE button until you enter the Options Mode.
2. Press the OK button to enter Options mode.
3. Press the MODE button twice to enter Options Setup Mode.
4. Select '*Light Source Frequency*' using the UP or DOWN buttons, press the OK button to enter the '*Light Source Frequency*' submenu.
5. Press the UP or DOWN buttons to select your desired frequency. Then press the OK button to confirm your selection (*Auto, 50Hz, 60Hz*). The default frequency for the United States is 60Hz.

3.4.7 LED Indicator Light

This function allows you to turn the LED Indicator Light on and off.

1. Press the MODE button until you enter the Options Mode.
2. Press the OK button to enter Options mode.
3. Press the MODE button twice to enter Options Setup Mode.
4. Select '*LED Indicator Light*' using the UP or DOWN buttons.
5. Press the OK button to turn LED Indicator Light On or Off, if the box has a check mark then the LED Indicator Light is activated.

3.4.8 Auto Screensaver

This function sets the duration of time in which the camcorder will wait with no user input before automatically turning the LCD screen off.

1. Press the MODE button until you enter the Options Mode.
2. Press the OK button to enter Options mode.
3. Press the MODE button twice to enter Options Setup Mode.
4. Select '*Auto Screensaver*' using the UP or DOWN buttons, press the OK button to enter the '*Auto Screensaver*' submenu.
5. Press the UP or DOWN buttons to select your desired duration. Then press the OK button to confirm your selection (*Off, 10 Seconds, 20 Seconds, 30 Seconds*).

3.4.9 Auto Shutdown (Power Save)

This function sets the duration of time in which the camcorder will wait with no user input before automatically power off the camcorder.

1. Press the MODE button until you enter the Options Mode.
2. Press the OK button to enter Options mode.
3. Press the MODE button twice to enter Options Setup Mode.
4. Select '*Auto Shutdown*' using the UP or DOWN buttons, press the OK button to enter the '*Auto Shutdown*' submenu.
5. Press the UP or DOWN buttons to select your desired duration. Then press the OK button to confirm your selection (*Off, 1 Minute, 3 Minutes, 5 Minutes*).

3.4.10 Time Watermark (Date and Time Stamp)

This function adds the date/time stamp to your videos and photographs.

1. Press the MODE button until you enter the Options Mode.
2. Press the OK button to enter Options mode.
3. Press the MODE button twice to enter Options Setup Mode.
4. Select '*Time Watermark*' using the UP or DOWN buttons.
5. Press the OK button to turn Time Watermark On or Off, if the box has a check mark then the Time Stamp is activated.

3.4.11 Beep Sound

This setting allows you to enable or disable the sound when pressing a button.

1. Press the MODE button until you enter the Options Mode.
2. Press the OK button to enter Options mode.
3. Press the MODE button twice to enter Options Setup Mode.
4. Select '*Beep Sound*' using the UP or DOWN buttons.

Press the OK button to turn Beep Sound On or Off, if the box has a check mark then the Beep Sound is activated.

3.5 Settings Mode

Basic settings can be changed in the settings menu. These include date & time, language and format. Power the camera on and press the MODE button to switch to Option mode.

3.5.1 Language

This function allows you to set the camcorder's interface language.

1. Press the MODE button until you enter the Options Mode.
2. Press the OK button to enter Options mode.
3. Press the MODE button three times to enter Options Settings Mode.
4. Select '*Language*' using the UP or DOWN buttons, press the OK button to enter the '*Language*' submenu.
5. Press the UP or DOWN buttons to select your desired Language. Then press the OK button to confirm your selection.

3.5.2 Date-Time

This function allows you to set the current Date and Time on your recorded video clips and captured photos.

1. Press the MODE button until you enter the Options Mode.
2. Press the OK button to enter Options mode.
3. Press the MODE button three times to enter Options Settings Mode.
4. Select '*Date-Time*' using the UP or DOWN buttons, press the OK button to enter the '*Date-Time*' submenu.
5. Press the UP or DOWN to change the selected field, press the OK button to switch to the next field.
6. After all fields are completed, press the OK button to exit the submenu, this will save the entered date and time.

3.5.3 Format

The format setting erases all photos, videos and data stored on your memory card.

1. Press the MODE button until you enter the Options Mode.
2. Press the OK button to enter Options mode.
3. Press the MODE button three times to enter Options Settings Mode.
4. Select '*Format*' using the UP or DOWN buttons, press the OK button to enter the '*Format*' submenu.
5. Press the UP or DOWN buttons to select your desired duration. Then press the OK button to confirm your selection (*Confirmation, Cancel*)

NOTE: This will delete all of your media and cannot be undone.

3.5.4 Reset to Factory Settings

Factory default settings can be restored in this menu. This function will not delete the media stored on the memory card, and will only restore all of the menu's setting back to factory default settings.

1. Press the MODE button until you enter the Options Mode.
2. Press the OK button to enter Options mode.
3. Press the MODE button three times to enter Options Settings Mode.
4. Select '*Reset to Factory Settings*' using the UP or DOWN buttons, press the OK button to enter the '*Reset to Factory Settings*' submenu.
5. Press the UP or DOWN buttons to select your desired duration. Then press the OK button to confirm your selection (*Confirmation, Cancel*).

3.5.5 Firmware Version

This setting will allow you to see what firmware version is installed on your camcorder.

1. Press the MODE button until you enter the Options Mode.
2. Press the OK button to enter Options mode.
3. Press the MODE button three times to enter Options Settings Mode.
4. Select '*Firmware Version*' using the UP or DOWN buttons, press the OK button to enter the '*Firmware Version*' submenu.
5. The firmware version will show on the screen, press the OK button to exit the Firmware Version submenu.

3.6 Playback Mode

Videos and photos captured on your camcorder can be easily played back. Power the camcorder on and press the MODE button three to switch to Playback Mode.

1. Press the UP or DOWN buttons to cycle through the captured videos and photos stored on the memory card.
2. When viewing a video press the OK button to start playback, while the video is playing press the OK button to pause and the MODE button to stop.

In Playback Mode the following options are available:

3.6.1 Delete

This function is used to delete photos and videos. Photos and videos can be deleted singly or all at once.

1. In Playback Mode press and hold the OK button to bring up the Delete submenu.
2. Press the UP or DOWN buttons to navigate the menu, and press the OK button for your selected setting (*Confirmation, Cancel*).

3.7 WiFi Connectivity

3.7.1 Connecting to the XDV App

To wirelessly operate the MN4KP1 camcorder you will need to install the “XDV” app on your Android or iOS device.

Scan the QR Code below with your smartphone to download the app. Alternatively, you may also search the app store for the app. The name of the app is **XDV**.



Android



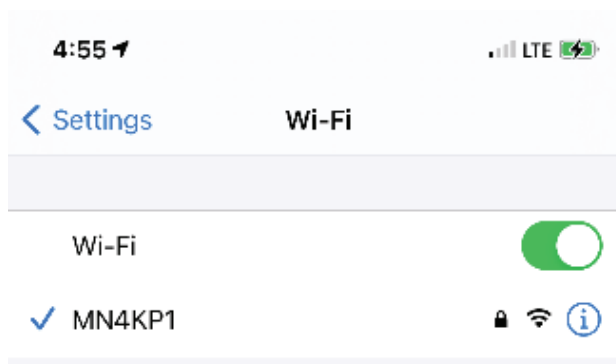
iOS

The directions below are for iOS smartphones and tablets. The process for connecting your MN4KP1 to an Android smartphones and tablets is similar to the processes outlined below.

Power the camcorder on and press the UP button once to enable the camcorder's WiFi network. To disable the camcorder's WiFi network, press the UP button again.

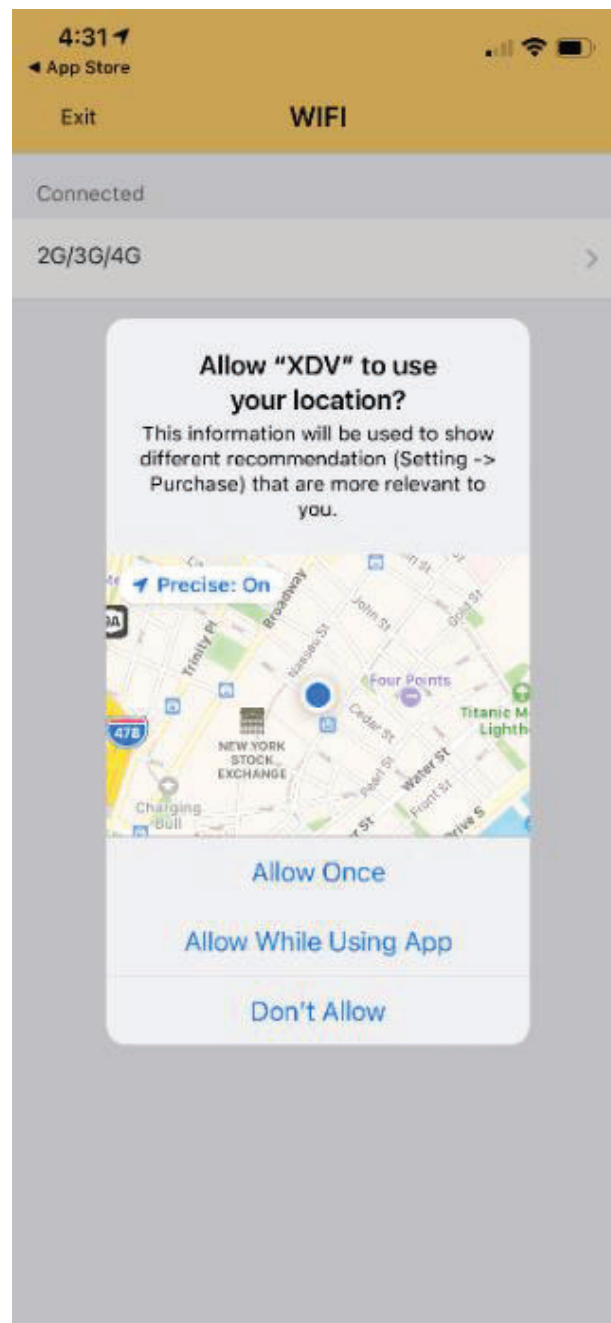
The status LED on your camcorder will blink BLUE while enabled and searching for a WiFi connection.

Go in to your smartphone's WiFi network settings menu, select the network ID named "MN4KP1" and enter the password 1234567890.



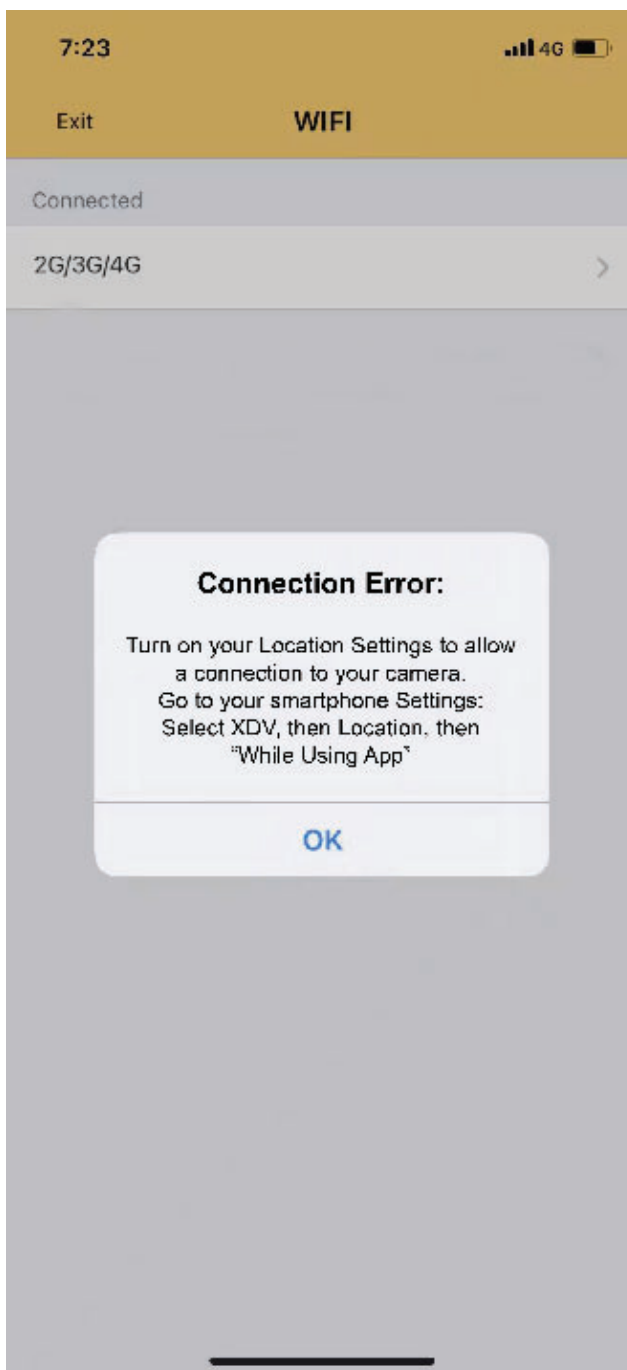
The status LED on your camcorder will stay a steady BLUE when connected, and the camcorder screen will turn off.

When launching the XDV app for the first time, you will be prompted to allow the XDV app to use your location. Select **“Allow While Using App”**. This will allow the app to communicate with your MN4KP1 and will allow the app to work properly. The app will not connect to your MN4KP1 if you select **“Don’t Allow”**. As part of the iOS operating system, your smartphone’s Location Settings must be enabled in order to allow proper communication between your smartphone and your MN4KP1 camcorder.



When launching the app, if you selected “**Allow While Using App**”, then MN4KP1 should show under the “Connected” menu. If you selected “**Don’t Allow**”, you will see “2G/3G/4G” under the “Connected” menu.

Pressing “2G/3G/4G” will pop-up the error message shown in the image below.

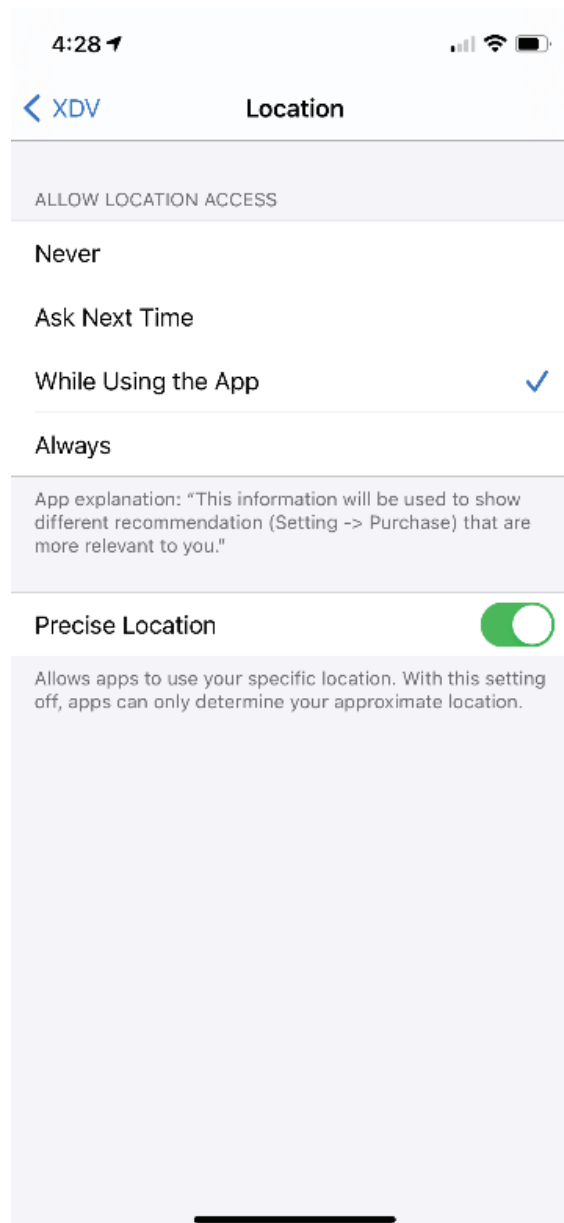


To connect to your MN4KP1 correctly, go into your smartphone's Settings, select the "XDV" app and then select the Location Settings. Finally, select **"While Using the App"** or **"Always"**.

Now, go back to your smartphone's WiFi network settings menu and make sure that "MN4KP1" is selected connected.

Next, launch the "XDV" app and you should see "MN4KP1" shown under the "Connected" menu.

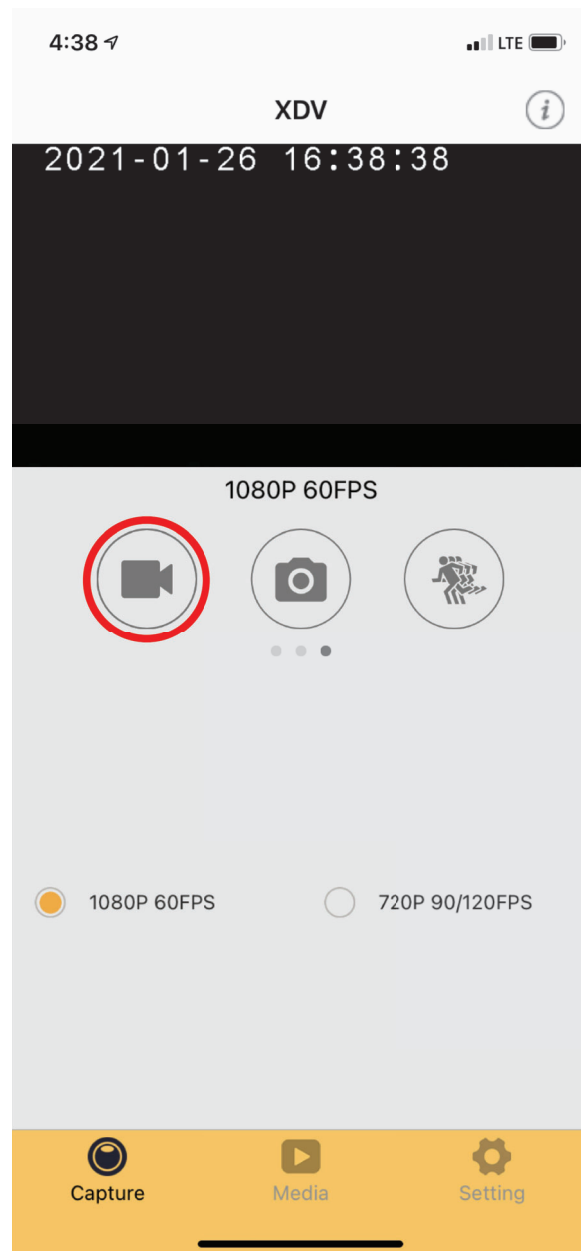
Press "MN4KP1" and the app should now connect to your camcorder successfully.



3.7.2 Operating the XDV App

Your MN4KP1 can now integrate with your smartphone. Upon launching the app, it will initially default to the video recording function. Follow the steps below to select modes.

To enter Video mode, tap the Video icon on the left side in the middle of your smartphone screen.



Video Mode

To enter Photo mode, tap the Camera icon in the middle of your smartphone screen.

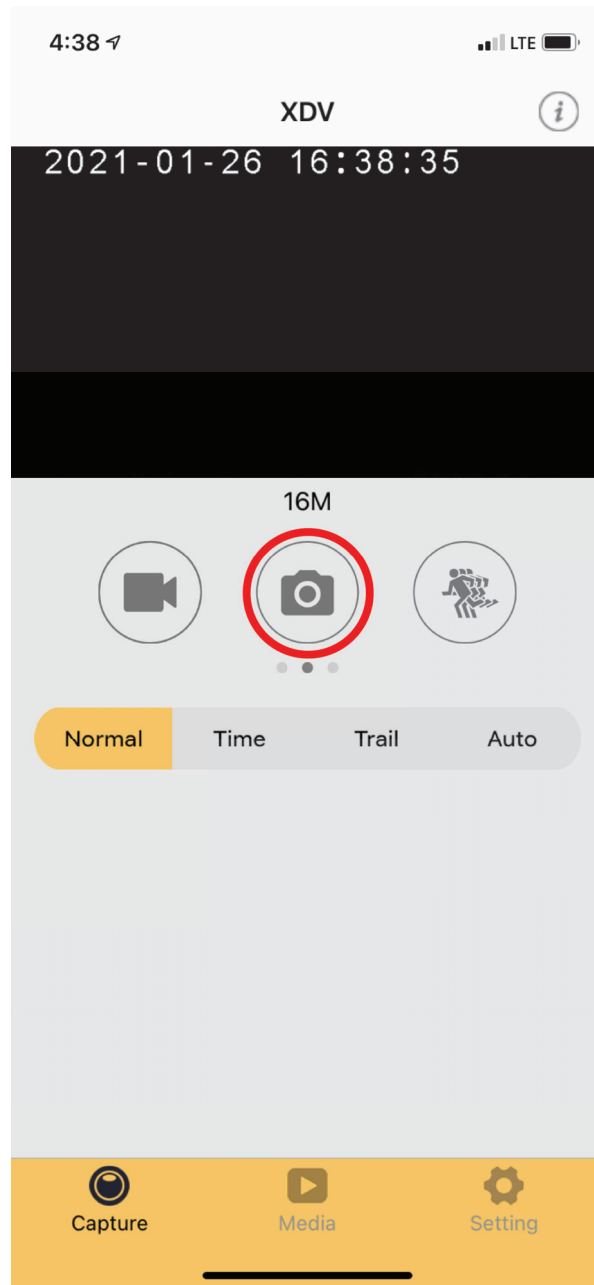
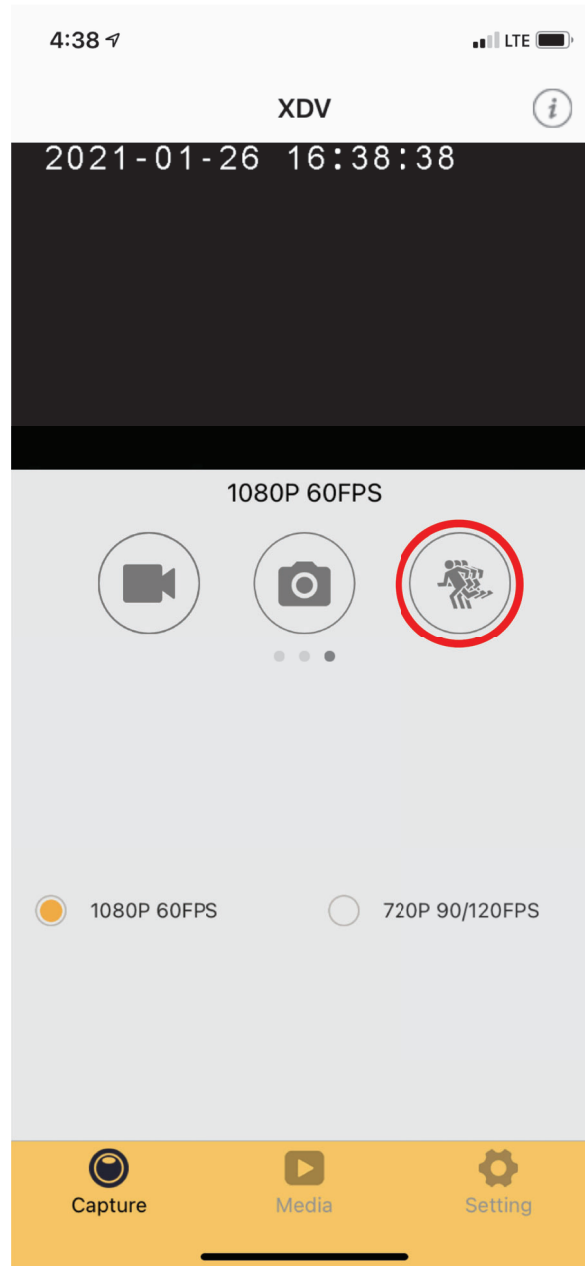


Photo Mode

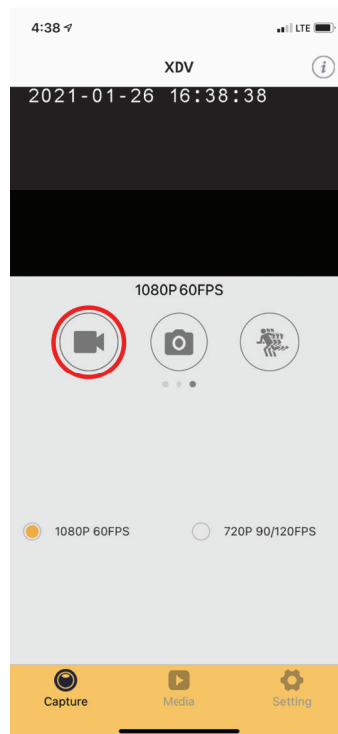
To enter Slow Motion mode, tap the Video icon on the left side in the middle of your smartphone screen.



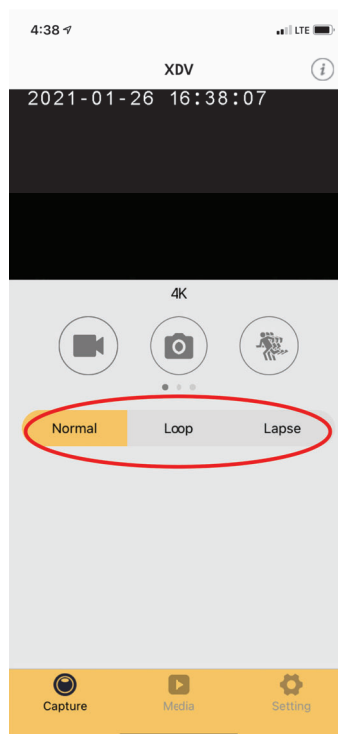
Slow Motion Mode

3.7.2.1 Recording Videos Remotely

1. To start recording a video, tap the Video icon on your smartphone screen. While a video is recording remotely, the operating indicator light at the back of your MN4KP1 will flash blue.

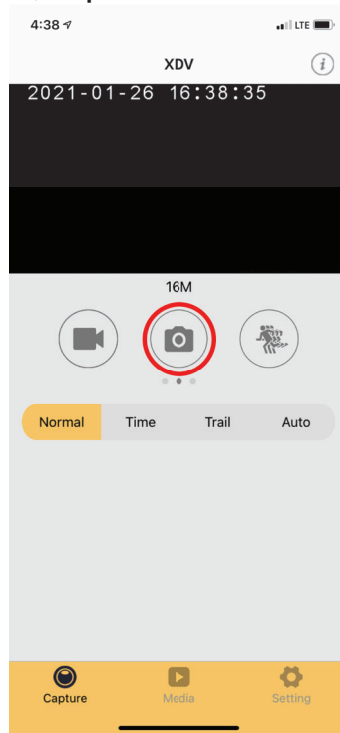


2. The Video Recording mode can be changed by selecting one of the options shown below. You can select Normal video recording, Loop Recording or Time-Lapse.

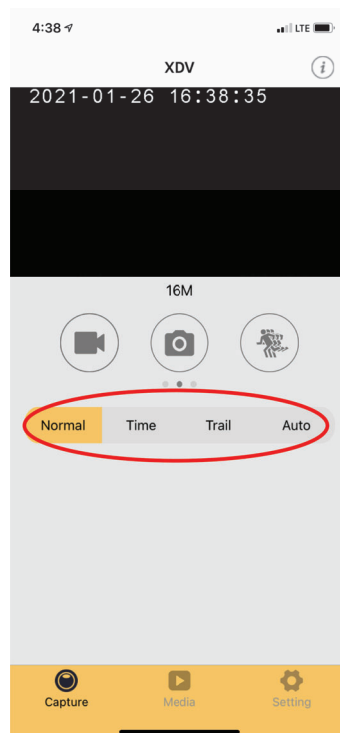


3.7.2.2 Taking Photos Remotely

1. Switch to Photo mode by tapping the Camera icon on your smartphone screen. To capture a photo, tap the Camera icon again.

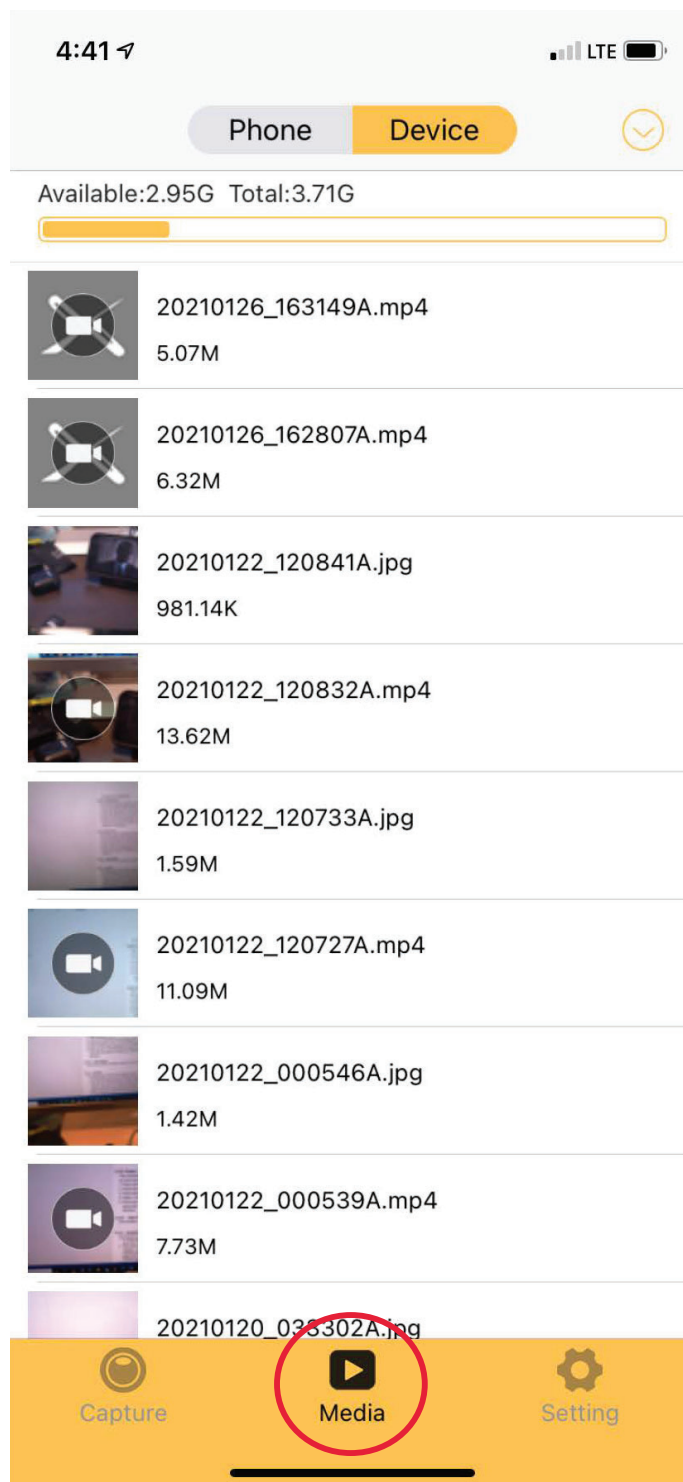


2. The Photo mode can be changed by selecting one of the options shown below. You can select Normal, Self-timer, Photo Burst or Time-Lapse.



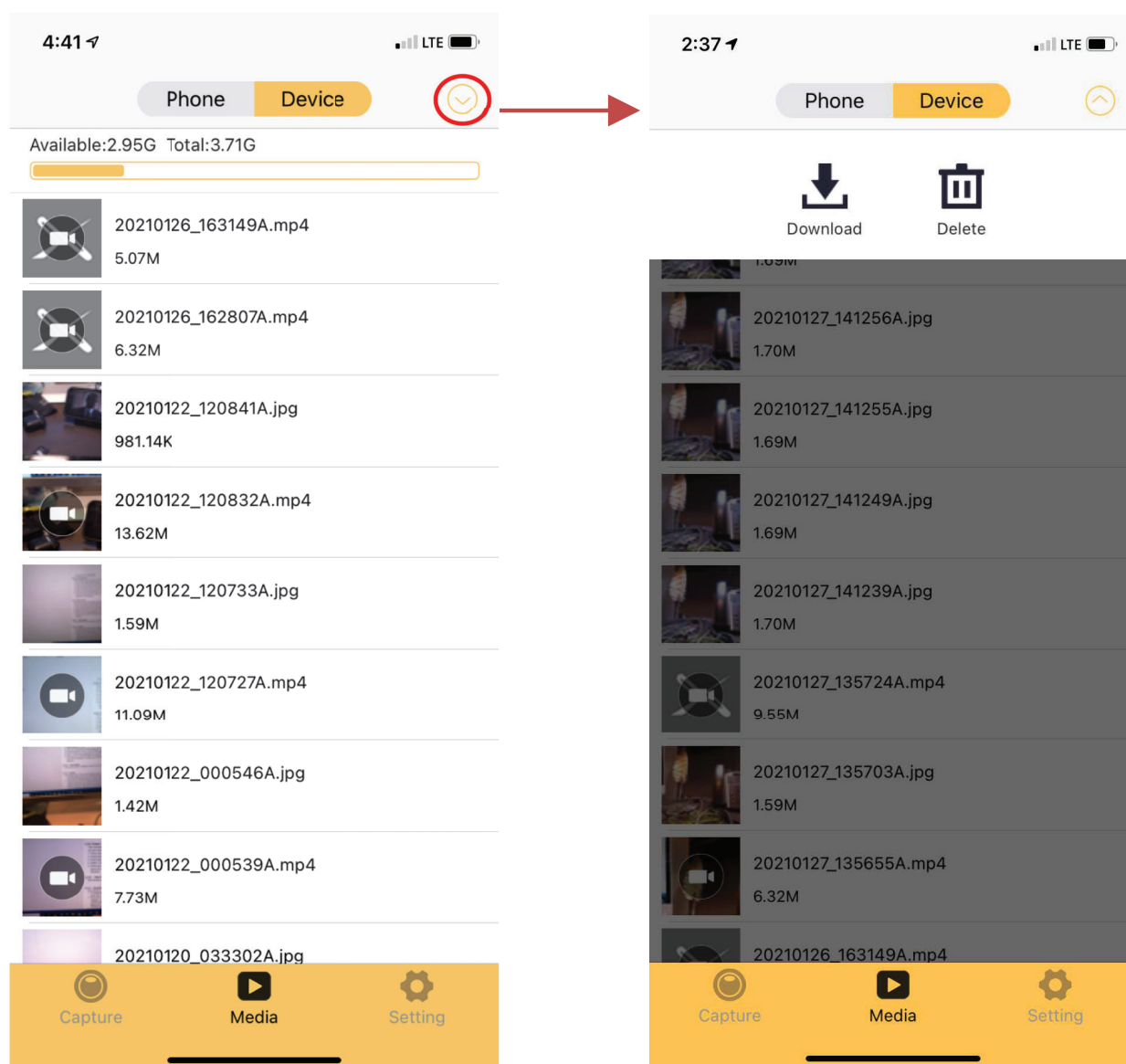
3.7.2.3 Viewing Media on the App

To view your photos and videos on the app, tap the Media icon in the bottom middle of your smartphone screen. Then select Device at the top of your screen to show the media on the camcorder. Tap the photo or video file you wish to view.



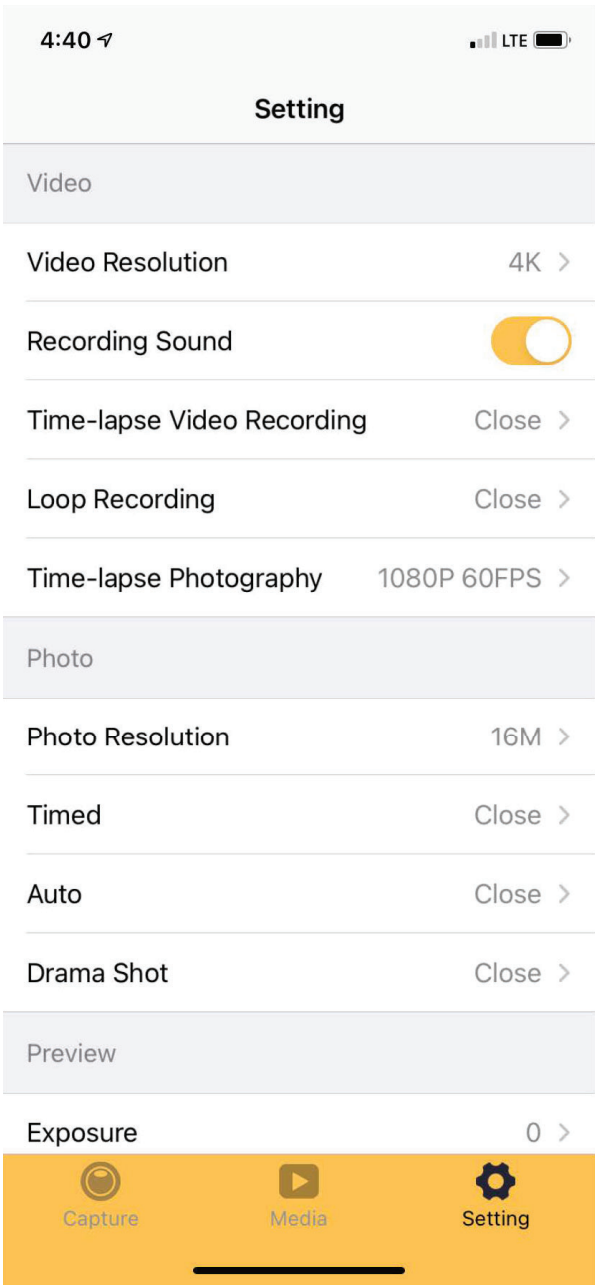
To download media to your smartphone or to delete media from the MN4KP1, tap the down arrow at the top right corner of the smartphone screen. Then select Download or Delete. Select the media you wish to download or delete and tap the confirm button on the bottom right corner of your smartphone screen. If a photo or video is deleted on the app, it will also be removed from the memory card in the MN4KP1.

Note: Any media deleted is permanent and cannot be undone.



3.7.2.4 Changing Camcorder Settings on the App

Camcorder settings can also be accessed through the app. Tap the Settings icon in the bottom right-hand corner of the screen to launch the Settings menu. From here, all of the camcorder settings can be adjusted.



4.1 Technical Specifications

| | |
|------------------------------|---|
| Model Number | Minolta MN4KP1 |
| Lens | Fixed Focus • f=39mm • F/5.5 • 170° Field of View |
| Zoom | 4X Digital Zoom |
| Image Sensor | 8MP CMOS Sensor |
| Pixels (photo) | JPEG: 16 MP • 12 MP • 8 MP • 5 MP • 2 MP |
| Pixels (video) | H.264: 4K UHD 3840x2160 30fps • 2.7K QHD 1688x1520 30fps • 1080p FHD 1920x1080 60fps • 1080p FHD 1920x1080 30fps • 720p HD 1280x720 90fps • 720p HD 1280x720 60fps • 720p HD 1280x720 30fps |
| LCD Monitor | 1.3" HD TFT LCD Display |
| WiFi Connection | Yes, with app integration |
| Power Saving Mode | OFF • 1 Minutes • 3 Minutes • 5 Minutes |
| White Balance Control | Auto • Sunny • Cloudy • Incandescent Light • Fluorescent Light |
| Special Features | 270° Rotation • Loop Recording • Slow Motion • Time-Lapse • Photo Burst |
| Recording Media | MicroSD • MicroSDHC; Maximum: 64GB |
| I/O Ports | Micro USB, USB 2.0 • Microphone (built-in MIC) • Speaker • Microphone Input (2.5mm) |
| Power | Built-in Lithium-Ion, 1000mAh |
| Dimensions | 4.57 x 1.26 x 0.91 in. • 1.92 oz. |



*Minolta is a registered trademark of JMM Lee Properties, LLC
and is used in the United States by Elite Brands Inc. under license.*

*40 Wall Street, 61st Floor, New York, NY 10005 USA • Tel: 800-441-1100
www.minoltadigital.com • www.elitebrands.com
Copyright © 2021 Elite Brands Inc.*

***If you're having difficulties with your camera, or would like further assistance,
please call our toll-free technical support hotline at 800-441-1100. Please be
sure to have your camera handy when calling.***



