

# INSTRUCTIONS FOR YOUR Dr. STEM Toys TALKING ATM

Item/Style # BF550 & BF555



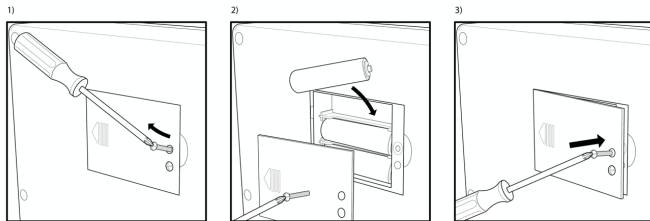
Recommended for ages 5 +

# Dr. STEM Toys™

www.ThinAirBrands.com

**Congratulations!** You are the proud owner of the Dr. STEM Toys Talking ATM. Now you can learn how to save money while having fun. Make deposits and watch your savings grow. Check your account balance using your personal debit card (included). You can take out money (withdrawal) and always know what's left in your very own ATM savings bank.

**STEP 1: INSTALL BATTERIES** Install 3 fresh "AA" size batteries. The battery compartment is on the back of the ATM. Install batteries by removing the compartment door with a screwdriver. Once installed, put door back in place.



**STEP 2: ON/OFF** Insert your SPECIAL Debit Card key into the Card Slot. This turns your bank on and off. When you insert your card the bank will tell you how much money you have inside. Get started by making a deposit. PLEASE DO NOT LOSE YOUR SPECIAL CARD KEY!

**STEP 3: MAKE A DEPOSIT** Before you can take any money out of your ATM, you first need to have some money inside. Insert your Debit Card and follow the instructions: Press Deposit button – type in the amount of your deposit – press the Deposit button again. Insert your coins in the coin slot. Insert your bills by placing them in the bill slot and then turn the knob on the side until the bill is securely inserted in the ATM. The maximum balance is \$999.99.

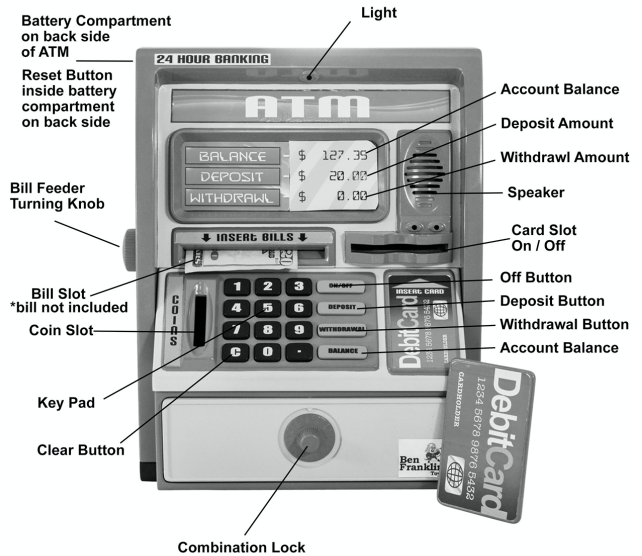
**STEP 4: CHECK YOUR BALANCE** You can check your account balance simply by pressing the Balance button. Maximum \$999.99

**STEP 5: MAKE A WITHDRAWAL** Simply insert your Debit Card, press the Withdrawal button, type in the amount you would like to withdraw, press withdrawal button again. Now open the combination lock and remove the amount you requested to withdraw. Your new account balance is shown.

**COMBINATION LOCK:** To open the combination lock, rotate knob counter-clockwise (left) two full rotations, until you hear clicking, to "10", then clockwise (right) to "12".

Your secret combination is also written on a sticker on the back of the ATM. DO NOT LOSE your combination.

Requires 3 x "AA" batteries, not included.



**CLEAR BUTTON** – If you make a mistake while you are in the middle of a transaction (deposit or withdrawal) you may hit the "C" clear button and then re-enter the number.

**RESET BUTTON** – The reset button can be found inside the battery compartment. If you want to re-set your ATM back to zero (\$0.00) simply press the reset button.

**COMBINATION LOCK** – Remember, your lock combination can be found on a sticker label on your ATM. **DO NOT** lose your lock combination. Keep it in a secure place.

**AUTO-OFF** – Your ATM automatically turns off after 10 seconds of non-use.

#### FOR BEST PERFORMANCE:

DO NOT USE RECHARGEABLE BATTERIES.  
DO NOT MIX BATTERY TYPES.  
DO NOT MIX OLD AND NEW BATTERIES.  
DO NOT MIX ALKALINE, STANDARD (CARBON ZINC) OR RECHARGEABLE (NICKEL CADMIUM) BATTERIES.  
DO NOT DISPOSE OF BATTERIES IN FIRE, THEY MAY EXPLODE OR LEAK.  
REMOVE BATTERIES FROM TOY WHEN NOT IN USE.  
NON-RECHARGEABLE BATTERIES ARE NOT TO BE RECHARGED.  
BATTERIES ARE TO BE INSERTED WITH THE CORRECT POLARITY.  
EXHAUSTED BATTERIES ARE TO BE REMOVED FROM THE TOY.  
THE SUPPLY TERMINALS ARE NOT TO BE SHORT CIRCUITED.  
ONLY BATTERIES OF THE SAME OR EQUIVALENT TYPE AS RECOMMENDED ARE TO BE USED.  
RECHARGEABLE BATTERIES ARE TO BE REMOVED FROM THE TOY BEFORE BEING CHARGED.  
RECHARGEABLE BATTERIES ARE ONLY TO BE CHARGED UNDER ADULT SUPERVISION.  
DISPOSE OF BATTERIES PROPERLY, REMEMBER THE ENVIRONMENT. DO NOT BURY OR BURN THEM.

See more Dr. STEM Toys at  
www.ThinAirBrands.com

© 2020 Thin Air Brands, LLC  
Parker, Colorado, USA  
Made in China

All materials for fastening or packing purposes are not part of the toy and should be discarded for children's safety.

Dr. STEM Toys is a Trademark of Thin Air Brands, LLC Designed in U.S.A.

**YOUR SECRET CODE IS LEFT 10, RIGHT 12**