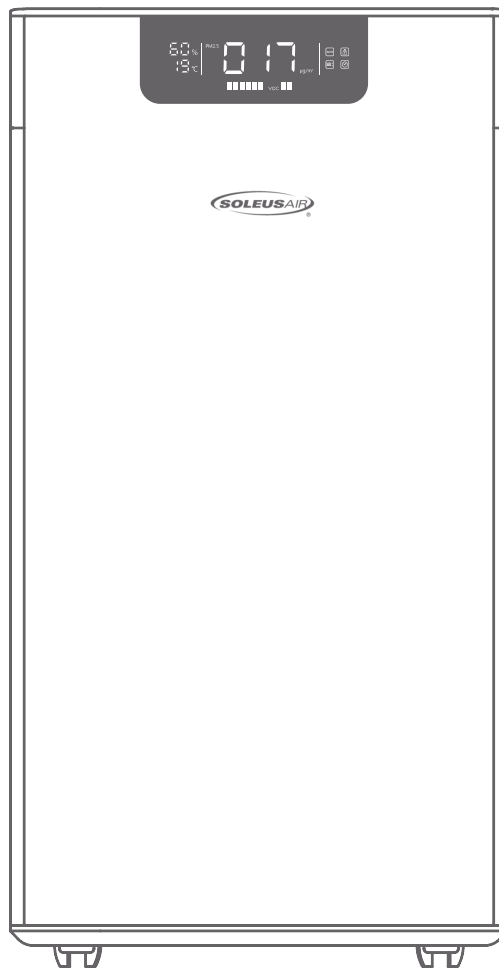




Whole House Air Purifier

OPERATING INSTRUCTIONS



KJ760F-A02



PURCHASE INFORMATION

Thank you for choosing a SoleusAir Air Purifier. This Owner's Manual will provide you with valuable information necessary for the proper care and maintenance of your new product. Please take a few moments to thoroughly read the instructions and familiarize yourself with all the operational aspects of your new SoleusAir Air Purifier.

For your own records, please attach a copy of your sales receipt to this manual. Also, write the store name/location, date purchased, and serial number below:

Store Name: _____

Location: _____

Date Purchased: _____

Serial Number (located on back of unit): _____

IMPORTANT INSTRUCTIONS

1. When using this electric unit, basic safety precautions should always be followed to reduce the risk of fire, electric shock, and injury to persons, including the following:
2. Read ALL instructions before using this unit.
3. Plug the purifier directly into a polarized 120V A/C electrical outlet.
4. Do not push finger or any object through the grilles and do not touch the purifier blade during use.
5. The purifier should be used on a stable and level surface.
6. The purifier is for indoor use only. Do not expose the purifier to excessive heat or humidity. This could cause damage to the electrical components.
7. Do not immerse with any type of liquid. Do not use near water.
8. The purifier should be kept out of the reach of children. Close supervision is necessary when the purifier is used by or near children.
9. To reduce the risk of fire or explosion, do not store or use gasoline or other flammable vapors or liquids in the vicinity of the purifier.
10. Do not operate the purifier or any appliances with a damaged cord. Do not operate the unit if it is malfunctioning, or it has been dropped or damaged in any manner.
11. Do not cover the cord or place near heat sources. Keep the cord away from high traffic areas, and do not submerge in water.
12. Unplug the purifier before moving or servicing.
13. To reduce the risk of fire or electric shock, do not use this purifier with any solid-state speed control device.
14. To disconnect, grip the plug and pull from wall outlet. Never pull on the cord to unplug.
15. This appliance is not intended for use by persons (including children) with reduced physical, sensory or mental capabilities, or lack of experience and knowledge, unless they have been given supervision or instruction concerning use of the appliance by a person responsible for their safety.
16. Be extra cautious when children and infants are around during use.

PACKAGE CONTENTS

- SoleusAir Air Purifier
- Operating Instruction
- Power Cord
- Pre-installed HEPA Filters x2 (**Please remove the plastic wrap before use*)

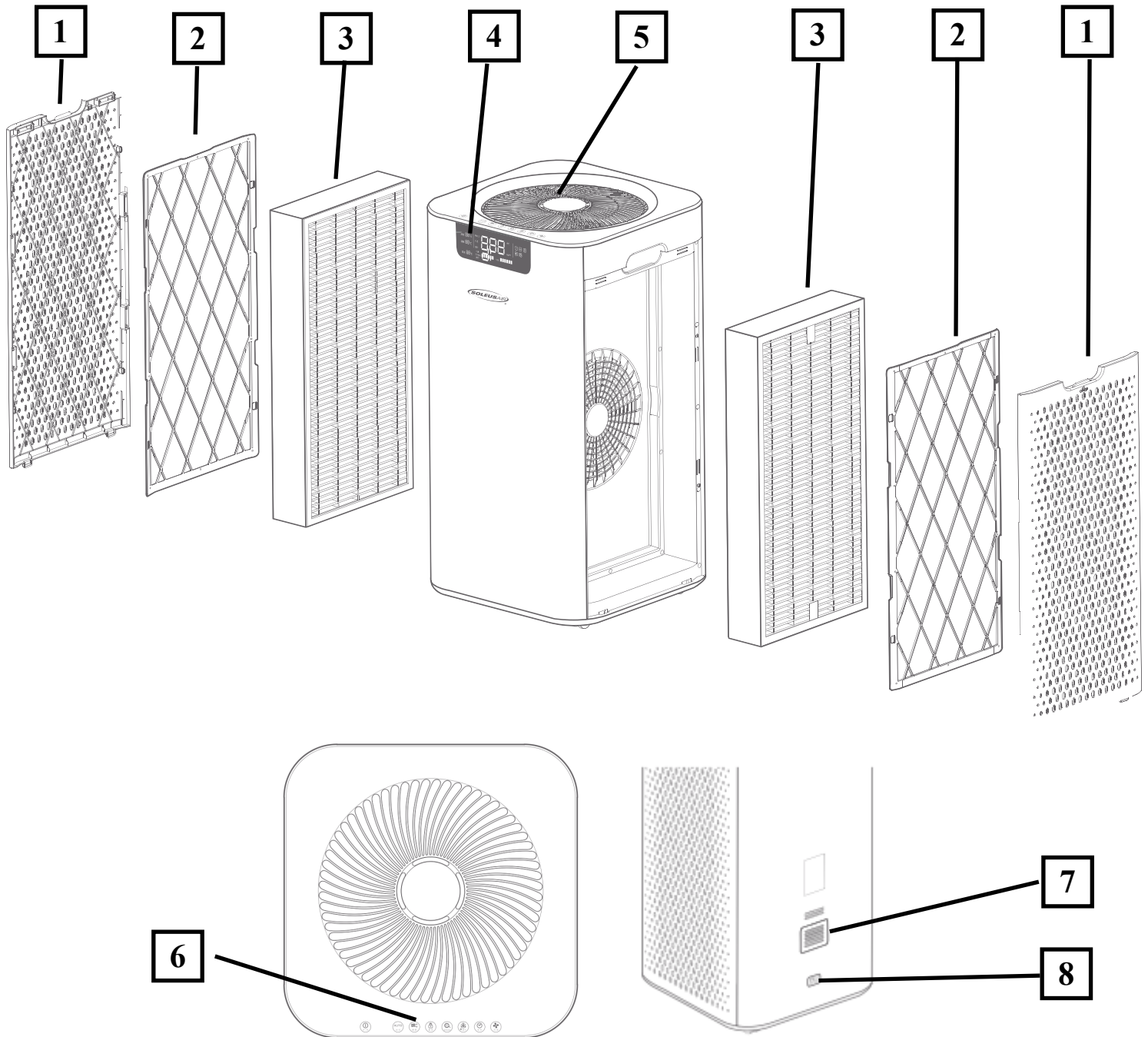
SPECIFICATIONS

Model Number	KJ760F-A02
Power Consumption (Watts)	80 W
Power Source	120V/60Hz
Noise Level	33 - 67 dB (A)
CADR PM2.5/TVOC	447/235 CFM
Applicable Area	Up to 1000 sq ft.
Product Weight	31.1 lbs.
Product Dimensions (W x D x H)	14.2" x 14.2" x 26.6"

WARNING: This purifier is equipped with a polarized plug (one blade is wider than the other). The plug is intended to fit into a power outlet only one way, with the wide blade in the wide slot. This is a safety feature; if you are unable to insert the plug fully into the outlet, try reversing the plug. If the plug still does not fit, contact a qualified electrician.

DO NOT DEFEAT THE SAFETY PURPOSE OF THE POLARIZED PLUG.

PRODUCT DIAGRAM



1. Air Intake Vent

2. Pre-Filter

3. Particulate Filter

(HEPA/Carbon/Formaldehyde filter)

4. Real-time Display Panel

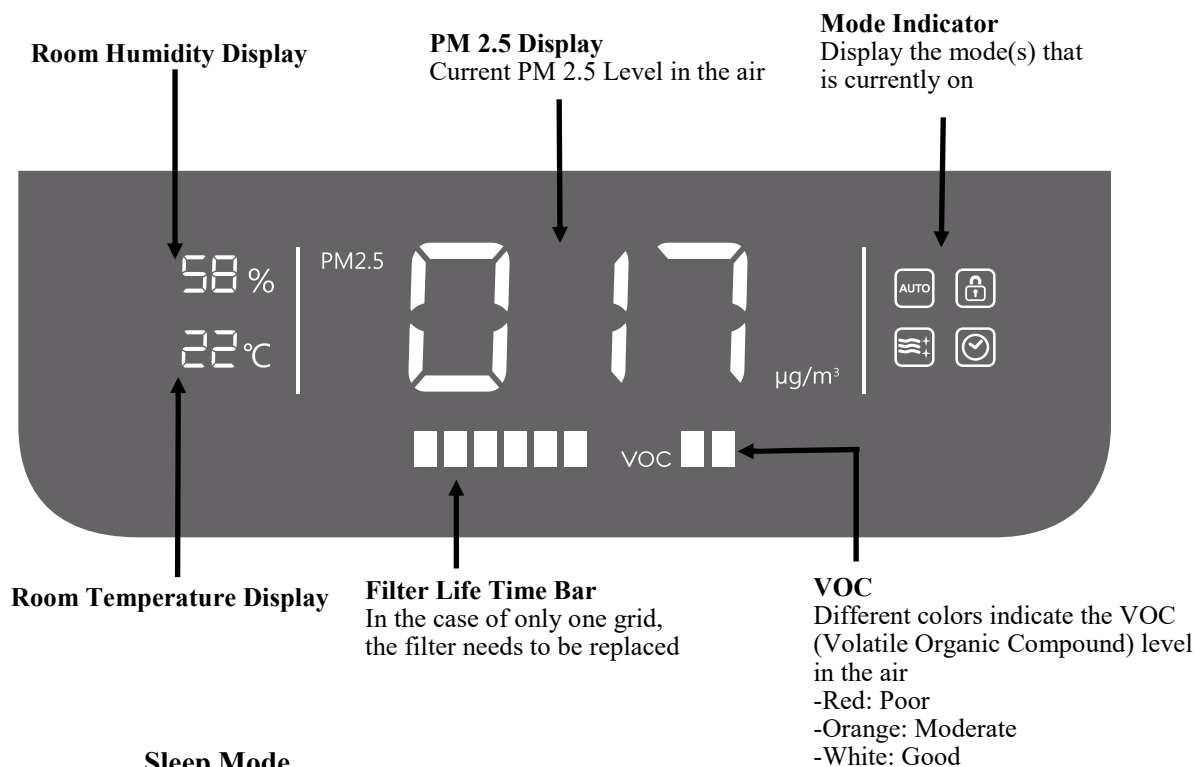
5. Air Outlet

6. Control Panel

7. Laser Sensors

8. Power Outlet

OPERATION



Sleep Mode

- The display screen and indicator lights will turn off, the unit will run on lowest fan speed.
- Press and hold for 3 seconds to only turn off the display and the fan speed will run at the current set speed.

Power Button

Press the button to Power on or off.

Filter Change

Press and hold for more than 3 seconds to reset the filter.

Timer

Press the Timer button to set 1-12 hours auto off timer.



Automatic mode

The fan speed will be adjusted automatically according to the current air quality.

Child Lock

- Press and hold for more than 3 seconds to enable child lock.
- Press for 3 seconds to return to normal functions.

Plasma/UV

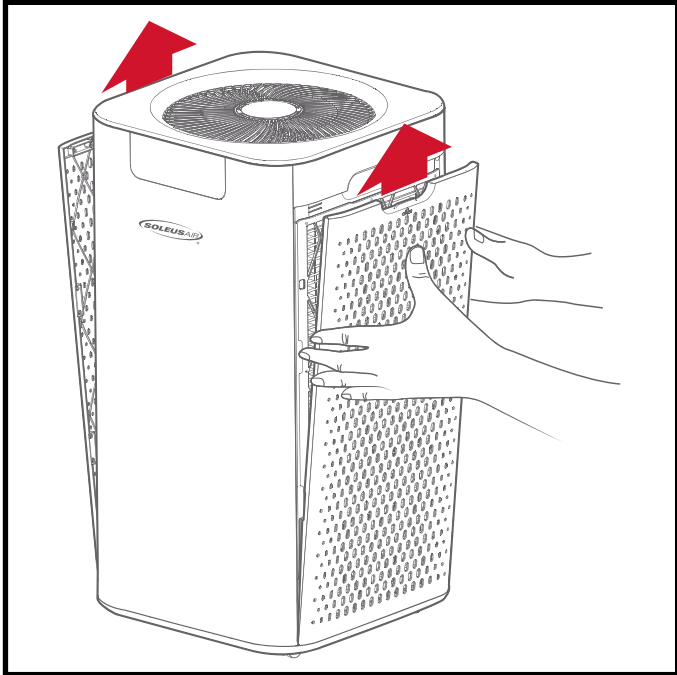
Press to enable Plasma and UV function.

Fan Speed

Press to adjust fan speed from 1-6.

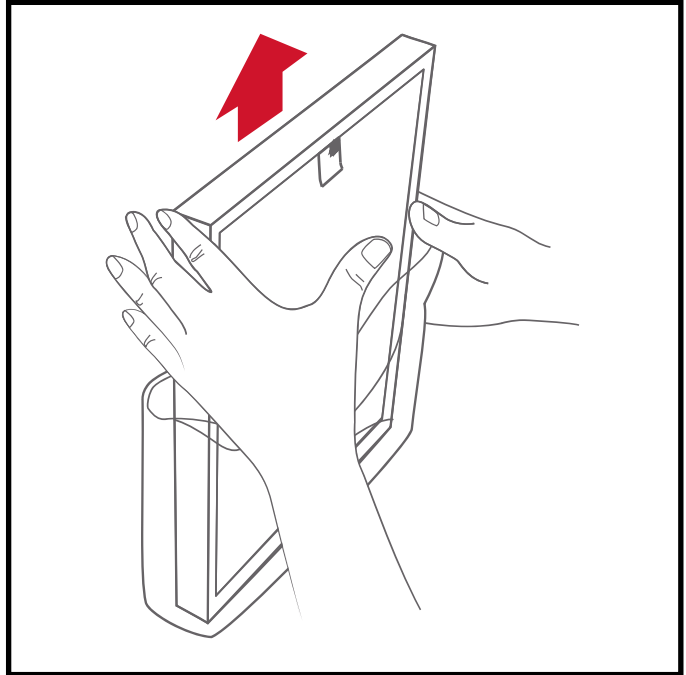
AQI Category	PM 2.5 Value
Good	0-12
Moderate	12.1-35.4
Unhealthy for Sensitive Groups	35.5-55.4
Unhealthy	55.5-150.4
Very Unhealthy	150.5-250.4
Hazardous	350.5-500

**PM2.5 is fine inhalable particles, with diameters that are generally 2.5 micrometers and smaller.
VOCs are compounds that easily become vapors or gases, many can cause health problems.



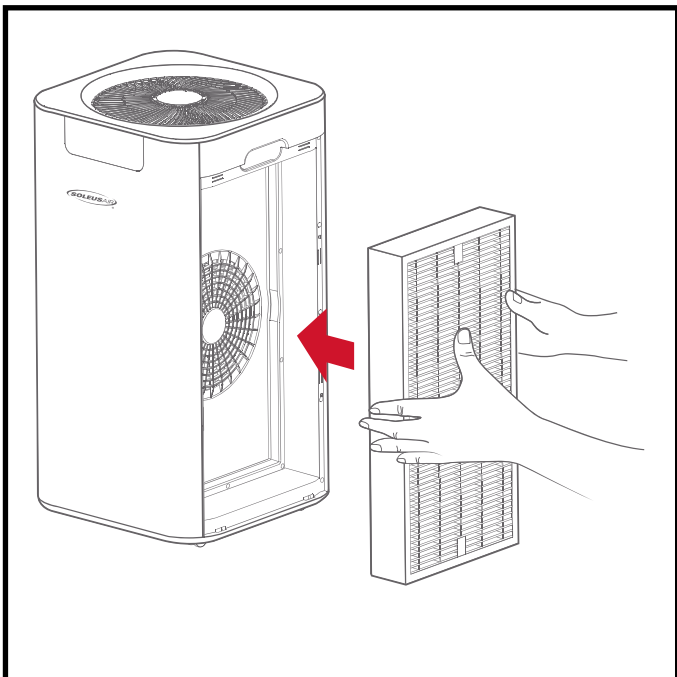
1. Open the air vent

Pull to open the magnetic vent.



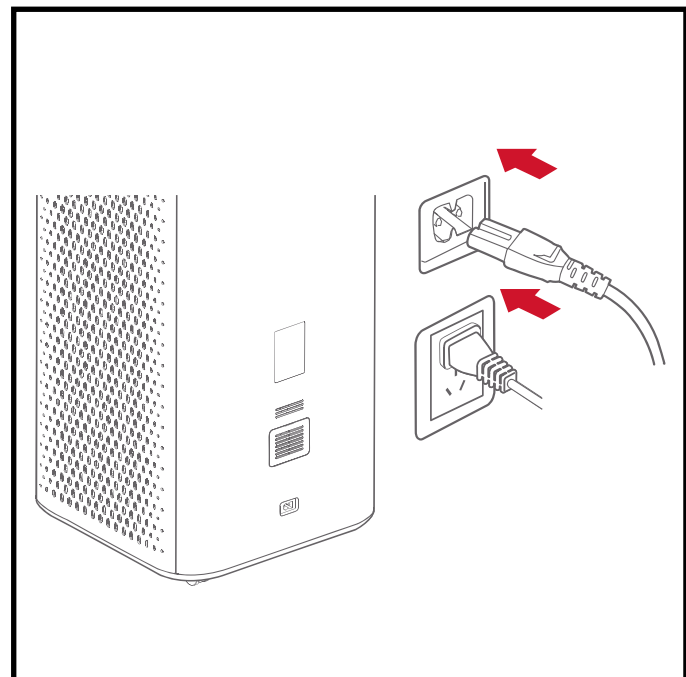
2. Remove the main filter

Both sides of the main filter's plastic wrap should be removed.



3. Put the filters back

Make sure the filter is back to its original position



4. Take out the power cord and connect it to the power supply

Power cord is located at the back of the unit.

Note: The filter will need to be changed periodically as dirt visible accumulates. This can vary greatly depending on air quality and amount of use. Suggest to replace the filter every 6-8 months. When the filter is dirty, replace it with a SoleusAir Replacement Filter.

***Replacement filter is available at acsaddle.com**

CAUTION: DO NOT OPERATE THE AIR PURIFIER WITHOUT A FILTER.

CLEANING & MAINTENANCE

Note: Make sure power is off and the power cord is not plugged into an electrical outlet prior to performing any maintenance on the unit

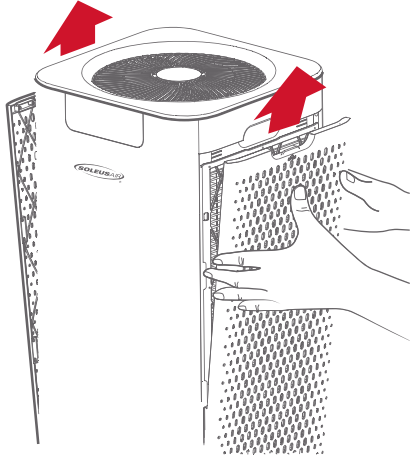
1. Wipe the purifier down with a damp cloth for most efficient operation.
2. Air dry the unit completely before use.
3. Never use abrasive cleaning agents or solvents. This may cause damage or deterioration to the surface of the unit.
4. Do not immerse the purifier in any form of liquid. Do not allow water to drip on or into the Purifier motor housing.

Storage

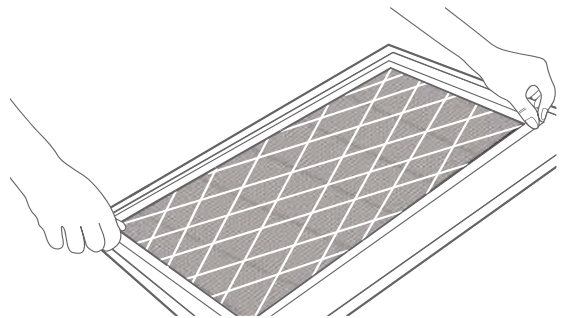
If the purifier will not be use for a long period of time, store it in a cool and dry location. To prevent dust and dirt build-up, use the original packaging to store the unit.

Cleaning the Pre-filter

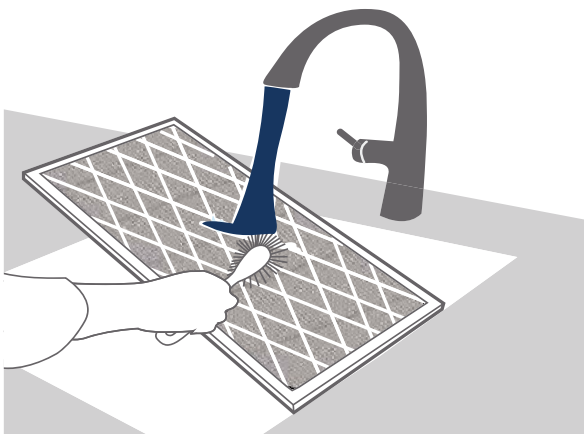
1. Pull the magnetic air vents and take out the pre-filter on both sides.



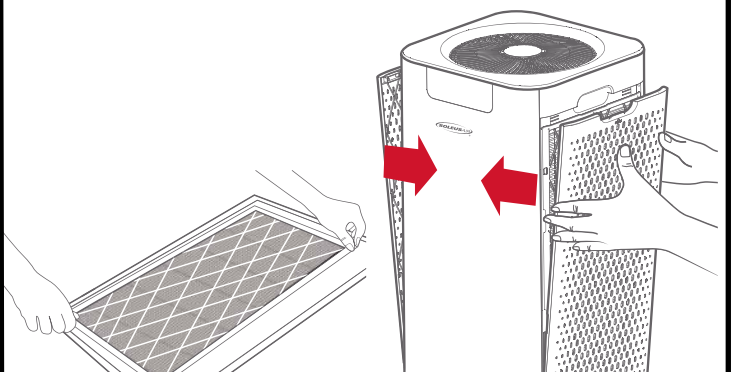
2. Gently remove the pre-filter from the air vent.



3. Use warm water to clean the filter, then let it air dry completely.



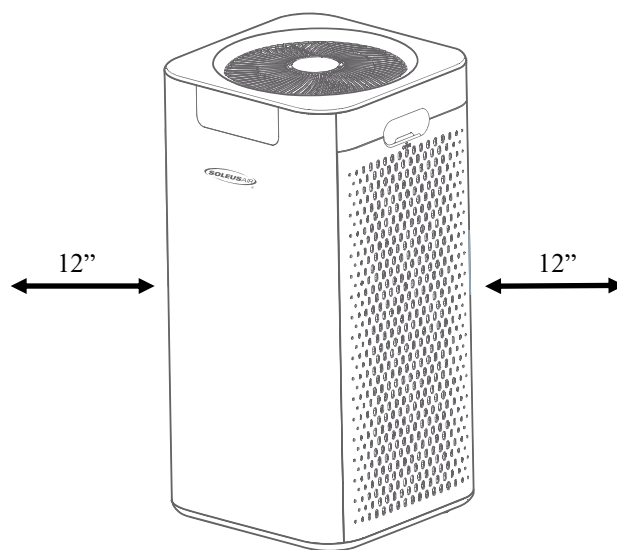
4. Put the filter back to its original position, and put the magnetic air vents back.



CHOOSING A LOCATION

To operate the unit for most effective purification:

- This air purifier is intended for indoor use only. Place the purifier on a smooth, level floor surface that is strong enough to support the unit.
- Operate the purifier in an enclosed area.
- Close all doors, windows and other outside openings to the room.
- Allow at least 12" of air flow on all sides.
- Place the purifier away from a clothes dryer.
- Do not use outdoors.



TROUBLESHOOTING

PROBLEM	SOLUTION
The purifier is not turning on or the indicator light is off.	<ul style="list-style-type: none">• Make sure the plug is pushed completely into the outlet.• Check the power cord and make sure it is connected properly.• Check if there is any obstacles blocking the air intake and air outlet.• Check if the filter is installed properly.• Make sure the air vents are attached properly.
Replacement filter is not applicable	<ul style="list-style-type: none">• Make sure a SoleusAir replacement filter is used.• Check if the filter is installed properly.• Make sure the packing plastic bag is removed.• Make sure there is no objects blocking filter placement.
The air volume is getting obviously smaller	<ul style="list-style-type: none">• Check if there is any obstacles blocking the air intake and air outlet.• Clean or replace the filter.

Ten Year Limited Warranty

Soleusair West warrants the accompanying SoleusAir Air Purifier to be free of defects in material and workmanship for the applications specified in its operation instruction for a period of TEN (10) years from the date of original retail purchase in the United States.

If the unit exhibits a defect in normal use, Soleusair West will, at its option, either repair or replace it, free of charge within a reasonable time after the unit is returned during the warranty period.

As a condition to any warranty service obligation, the consumer must present this Warranty Certificate along with a copy of the original purchase invoice.

THIS WARRANTY DOES NOT COVER:

- Damage, accidental or otherwise, to the unit while in the possession of a consumer not caused by a defect in material or workmanship.
- Damage caused by consumer misuse, tampering, or failure to follow the care and special handling provisions in the instructions. This includes dents, accidental or otherwise, to the base and head of the unit.
- Damage to the finish of the case, or other appearance parts caused by wear.
- Damage caused by repairs or alterations of the unit by anyone other than those authorized by Soleusair West.
- Freight and Insurance cost for the warranty service.

ALL WARRANTIES, INCLUDING ANY IMPLIED WARRANTY OF MERCHANT ABILITY ARE LIMITED TO TEN-YEAR DURATION OF THIS EXPRESS LIMITED WARRANTY. **SOLEUSAIR WEST** DISCLAIMS ANY LIABILITY FOR CONSEQUENTIAL OR INCIDENTAL DAMAGES AND IN NO EVENT SHALL SOLEUSAIR WEST'S LIABILITY EXCEED THE RETAIL VALUE OF THE UNIT FOR BREACH OF ANY WRITTEN OR IMPLIED WARRANTY WITH RESPECT TO THIS UNIT.

This warranty covers only new products purchased from our authorized dealers or retailers. It does not cover used, salvaged, or refurbished products.

As some states do not allow the limitation or exclusion of incidental or consequential damages, or do not allow limitation on implied warranties, the above limitations and exclusions may not apply to you. This warranty gives you specific legal rights, and you may also have other rights that vary from state to state.

For Technical Support & Warranty Service

Please Call (877) 976-5387

Or visit www.soleusairwest.com

Please scan the QR code to register your product to receive purchase discounts on replacement filters.

