

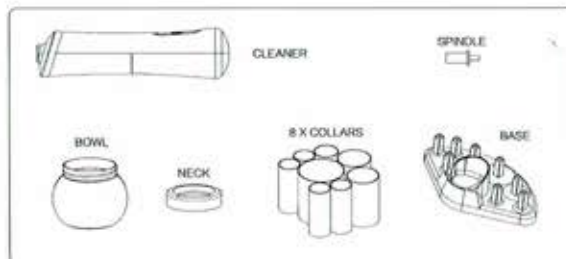
# USER MANUAL



## INTRODUCTION:

It's recommended to clean makeup brushes once every two to four weeks, but traditional cleaning methods are messy and laborious and it can leave brushes wet and unusable for up to 24 hours. This machine leaves brushes clean and dry - ready to reuse in just 30 seconds!

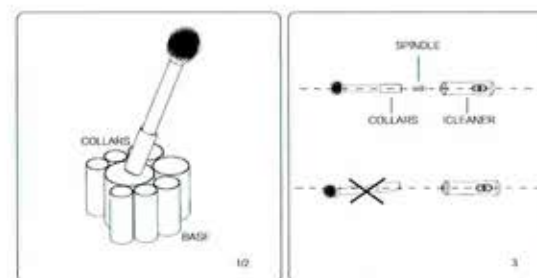
Please note that both makeup brushes and this device are delicate - Please carefully read and follow the instruction before starting and please keep the instruction for future reference.



## HOW TO USE:

1. Select brush, note the type of makeup - is it water soluble or non-soluble?
2. Now select the best fitting collar and push the brush in, until it is held firm and straight. Remove the collar and brush from the base.

1



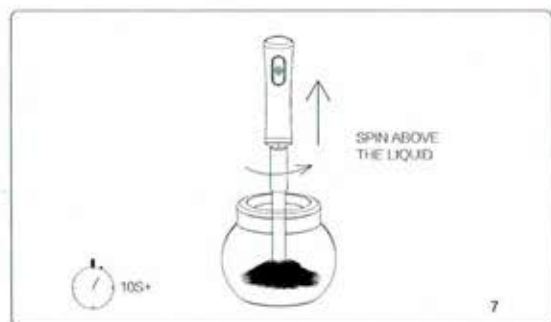
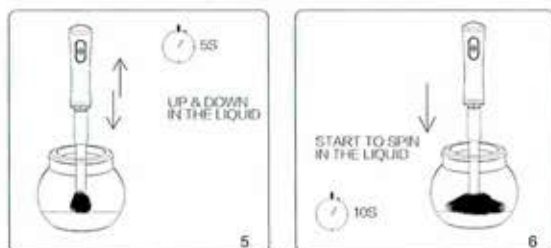
3. Push the spindle into the square hole at the bottom of the collar, then put the other end into the machine.

Please make sure that the machine is securely attached to the spindle collar and brush in a straight line. Adjust the brush if necessary. Any slight leaning will affect the ability of the machine to clean and dry and may cause it to rattle.

## 4. FILL THE BOWL

- A. For water soluble makeup as an example: blusher and loose powder, squeeze a small amount ( 4 ml) of your preferred anti-bacterial liquid soap into the bowl. Please consult your brush manufacturer for advice on the most clean. Add water to the bowl until water level is half the height of the brush bristles you wish to clean. If you are unsure whether the makeup is water soluble, try this step first and if the brush is not totally clean, follow the non-water soluble makeup instruction.
- B. For non-water soluble makeup (for example foundation), add 10 - 20 ml of makeup brush cleanser, depending on brush size, into the bowl. Ensure the solution level less than half of the height of the brush bristles you wish to clean.

2



7. After 10 seconds - gradually lift the spinning brush out of the liquid but keep inside the bowl and leave it to spin above the liquid level. As the brush is lifted from the dirty liquid, the bristles will splay out and you will see the water cleanser and dirt being spun out of the brush. Leave the brush spinning above the liquid.

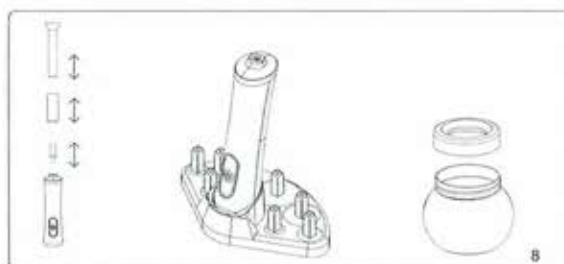
4

After 10 seconds turn it off. Repeat this step if you would like it drier, reshape the bristles with your fingers if necessary.

Warning: Do not over-spin as this may damage the brush. We advise not to spin dry continuously for more than 10 seconds one time, then check the brush and if still wet, repeat.

8. Detach the spindle from the machine and the collar from the spindle remove brush from collar. Put collar back on the base.

9. Remove the neck from the bowl, then wash the bowl and neck by hand with soap and water.



#### WARRANTY:

The limited warranty lasts 1 year from the date of purchase, please keep the original receipt for warranty service for service or repair during this warranty period. Important: this warranty does not cover damage resulting from accidents, misuse, alterations, abuse, lack of reasonable care or use other than described in these instructions or performance of service or repairs by an unauthorized service center. This warranty is valid only on merchandise sold by authorized retailers.

5

#### WARNINGS AND LEGAL:

- 1) This is not a toy. This product can only be used by children aged from 8 years and above and persons with reduced physical, sensory or mental capabilities or lack of experience and knowledge. If they have been given supervision or instruction concerning use of the appliance in a safe way, and understand the hazards involved children shall not play with the appliance cleaning and user maintenance shall not be made by children without supervision. Please store with care and out of reach of children.
- 2) Always consult the brush manufacturer instructions before selecting the best liquid anti-bacterial soap when cleaning makeup brushes.
- 3) Before use, this product must be properly set up.
- 4) Do not tamper with any internal components. There are no user serviceable parts inside the unit and opening the product will invalidate the warranty.
- 5) Do not attempt to repair the product yourself. Contact us if the product requires servicing.
- 6) Do not place any part of the product near heat sources such as radiators, cookers, etc.
- 7) Do not use the machine for anything other than its intended use.
- 8) Do not open the product other than to replace the batteries.
- 9) Do not allow liquid to get inside.

The technical specification for this product and the contents of the user manual are subject to change without notice. We cannot take any responsibility for any damage to brushes cleaned using.

6