

# **SHARPER IMAGE®**

## **CORDLESS WINDOW VACUUM**

Item No. 207855

User Guide



Thank you for purchasing the Sharper Image Cordless Window Vacuum. Please read this guide and store it for future reference.

## INTRODUCTION

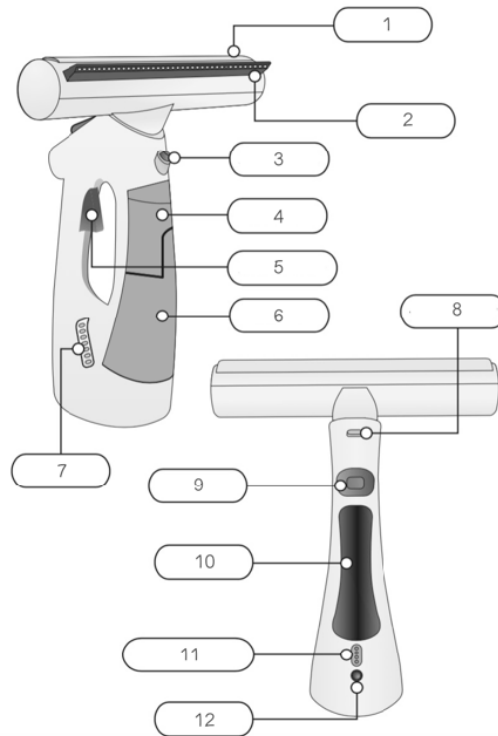
The Cordless Window Vacuum gives your windows a brilliant, streak free cleaning every time. Just spray, wipe and vacuum away the dirty water. Its double tank system stores clean and dirty water separately.

## FEATURES

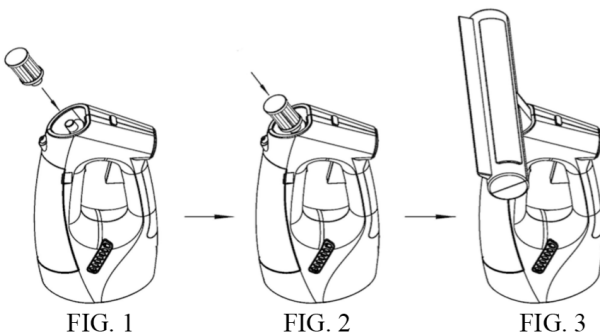
- Battery: 3.7V ~1500 mAh Li-Ion
- Working time: 30min
- Charging time: 2h
- Output: 5V 1000mA
- Input: 100-240V~50/60Hz
- Clean water tank: 2.9 oz. [86ml]
- Dirty water tank: 1.7 oz. [51ml]

## IDENTIFICATION OF PARTS

1. Wipe Attachment Area
2. Squeegee
3. Spray
4. Water collection tank
5. Trigger
6. Clean water tank
7. Air outlet
8. Squeegee press-button
9. Switch
10. Handle
11. Battery level LED lights
12. Charger socket



**IMPORTANT!** Before Using the Cordless Window Vacuum, please insert the suction strainer as shown below [FIG. 1-3]

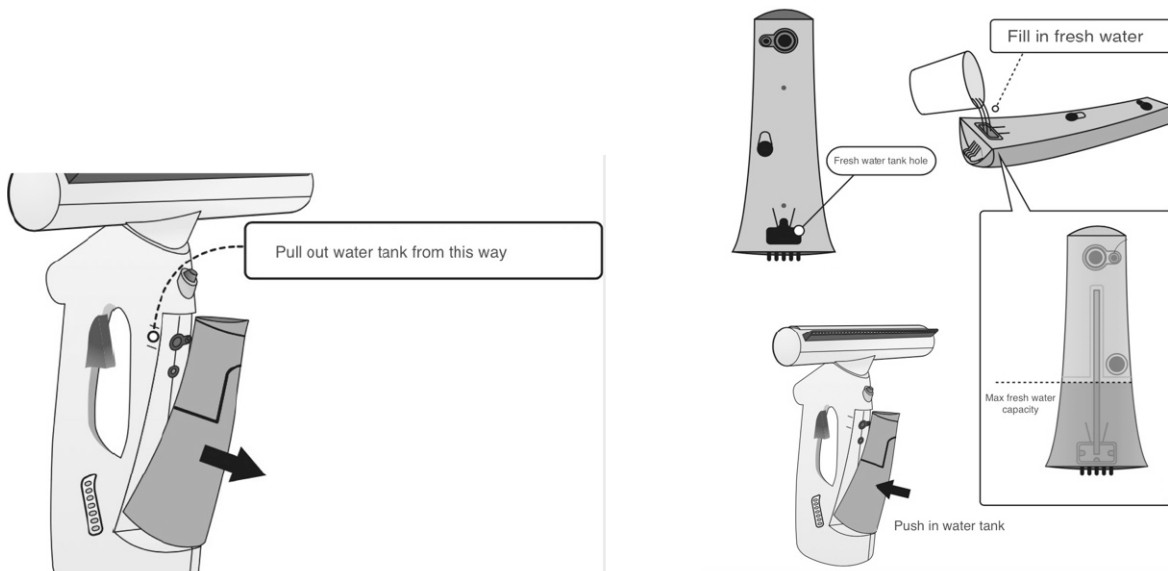


## CHARGING THE BATTERY

- Connect the charger to the device at charger socket [12]. Then, plug the charger into an AC outlet.
- A **BLUE** light [11] will turn on to indicate the device is charging. Four **LED** lights turn on when the battery is fully charged.
- It takes approximately 2 hours to fully charge the battery.
- **Note:** we recommend that you unplug your charger when charging is complete and the **GREEN** light illuminates.

## FILLING THE WATER TANK

- Switch the device OFF and disconnect it from the charger.
- Pull out the water tank and remove the cap.
- Fill the water tank [6] with clean water by slightly tilting the device forward. Once the water tank is nearly full, replace the water tank cap. **Note:** Do not add harsh cleaning materials. Only use clear and pure water. The use of distilled water is recommended in areas with hard water to avoid lime scale deposits.



**Note:** Be sure to unplug the device while refilling the tank.

## ATTACHING THE CLEANING WIPES

- The cleaning wipes stick to wipe attachment area [1] with Velcro. Position the selected wipe in front of the attachment area evenly, then press the surface to secure it, as shown in Figure 1.
- Remove the wipe by simply tearing it off. See Figure 2.
- Emery wipes can be used to remove tough stains and grease from your surfaces while the microfiber wipes give a shiny and streak-less finishing for less dirty surfaces.
- For best results, wipes should be replaced regularly according to their cleanliness. Wipes can be machine washed at 100°F. Do not put wipes in the dryer.

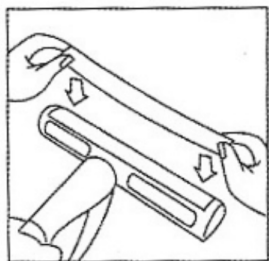


FIGURE 1

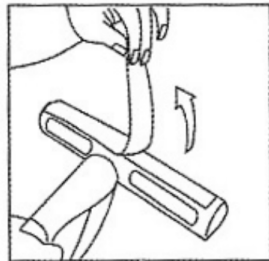


FIGURE 2

## SPRAY TRIGGER

- Hold the unit by the handle and press the water spray trigger [5] as shown in Figure 3.

## CLEANING WINDOWS

- Turn the device and wash the surface with either one of the wipes attached to the unit. If necessary, a mild glass cleaner can be sprayed on the window to help remove dirt and grime.

## USING THE VACUUM

- Once completed, turn the unit again and switch on the vacuum function with the vacuum switch [9] by pressing it once as shown in Figure 4. Keep the device in horizontal position and move the squeegee [2] over the surface in a gentle, top-to-bottom movement to vacuum and remove the excess water and dirt.

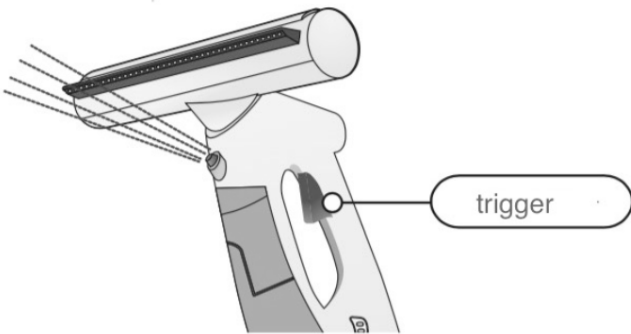


FIGURE 3

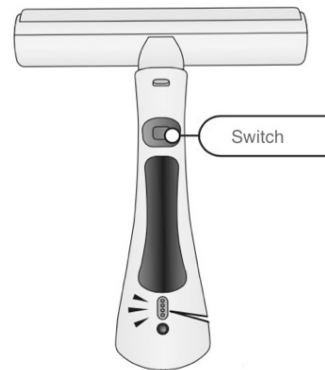


FIGURE 4

**⚠ Warning:** Do not spray water into the eyes of people or animals. Do not spray water onto electronics such as computers or television sets.

**⚠ Warning:** This device is for cleaning windows. Do not use the vacuum function for cleaning up household spills or messes.

## AFTER USE

- Turn off the vacuum function by pressing the Vacuum switch [9]
- Wait 30 seconds to lift the water tank cap, remove the filter and empty the water tank [4] by turning the device upside down above the sink.
- Wash the filter carefully before placing it back in the unit. The collected water from the vacuum cleaner is recycled through this filter and it is therefore important it is cleaned after each use.

## MAINTENANCE AND CLEANING

- **Note:** Always switch off the device and unplug from the charger before cleaning. Never immerse the device and/or the power cord in water or other liquids.
- Turn the device off.
- Lift the water tank cap, remove the filter and empty the water tank by turning the device upside down above the sink.
- Clean the device and accessories with a damp cloth and a mild detergent and allow it to dry completely.
- Wash the filter carefully before placing it back in the unit. The collected water from the vacuum cleaner is recycled through this filter and it is therefore important it is cleaned after each use.
- **Note:** Never use abrasives, bleaching agents or steel wool to clean the device. This could cause damage to the material.

## RINSING THE WATER TANK

To clean the water tank, we recommend that you fill it with water, close the lid and shake the unit vigorously. This will release any lime-scale deposits that have collected on the bottom of the tank. Pour the water out by holding the cleaner upside down.

## LIME-SCALE REMOVAL

To extend the life of your device it is recommended to descale the appliance every six months. Switch the device off and remove the plug from the socket. Fill the tank with 4 oz. of 120°F hot water and add one or two descaling tablets. Pour the water out as described above after 30 minutes.

## STORAGE

Make sure that the device and the attachments are completely clean and dry before you store the device.

## TECHNICAL DETAILS

Item No.	207855
Window Cleaner input	3.7V dc 9W
Adapter input	100-240V~50/60Hz, 0.2A
Adapter output	5V dc 1000mA

## SAFETY REGULATIONS


**Warning:** *When using any electrical appliance, always observe basic safety precautions. The following instructions should be followed to reduce the risk of fire, electric shock or injury.*

### General:

- Read this manual carefully before using the appliance. Keep this manual in a safe place for future reference.
- Use the appliance only as described in this manual.
- Check if the voltage indicated on the charger corresponds to the local voltage before you connect the device.
- Always use a grounded socket.
- Check the device regularly for damage. Do not use the device in case the power cord, plug or charger is damaged, or when any component of the device has been dropped or damaged. If the power cord is damaged, contact Sharper Image Customer Service.
- Do not attempt to repair the device yourself.
- This appliance is not suitable for use by children.
- Never allow children to play with packaging as there is risk of suffocation.
- Always disconnect the device from the adaptor when you fill, empty or clean the device.
- Never pull the power cord to disconnect the charger from the socket. Instead, hold the adaptor and gently pull to disconnect.
- Do not use the device with an extension cord unless this extension cord has been checked and tested by a qualified technician.
- Do not close the door on the power cord or pull it around sharp edges or corners. Do not allow the power cord to be compressed or curled.
- Keep the device, charger and the power cord away from flames and hot surfaces.
- Do not use attachments which are not supplied with this device.

- Never use the device in areas where certain vapors may be present (paint thinner, flammable material, oil based paint and varnish, flammable liquids and gases) for risk of an explosion.
- Never immerse the device and/or the adaptor in water or other liquids.
- Do not touch the charger with wet hands.
- Never attempt to grasp an electric device if it has fallen in water or other liquids.
- Do not add harsh cleaning materials, caustics, acids, scented perfumes, oils or cleaning products not intended for this type of cleaning to the water or the water tank as this may damage the device or make it unsafe to use. Only use clear and pure water. The use of distilled water is recommended in areas with hard water to avoid lime scale deposits.
- Use the vacuum function only to vacuum liquids used during the cleaning process.
- Only use the device on smooth, solid, flat surface that is suitable to withstand moisture.
- Make sure the air exhaust is not blocked.
- Only use the original charger as supplied with this device.
- Be extra careful when cleaning windows.
- Store the appliance indoors.
- Damage caused by improper use of this device on objects, is materials, persons and/ or animals or by not observing the instructions in these directions for use excluded from guarantee.

This appliance is only intended for domestic use; do **NOT** use for commercial purposes.

 **Warning:** *Do not add cleaning fluids to the tank. Only add clean water. (Distilled water is preferred in areas with hard water to avoid lime scale deposits.) If you do need to use cleaning solution, spray it directly onto the window that you are about to clean.*

## WARRANTY / CUSTOMER SERVICE

Sharper Image branded items purchased from SharperImage.com include a 1-year limited replacement warranty. If you have any questions not covered in this guide, please call our Customer Service department at 1 (877) 210-3449. Customer Service agents are available Monday through Friday, 9:00 a.m. to 6:00 p.m. ET.

**SHARPER IMAGE®**

The SHARPER IMAGE® name and logo are registered trademarks.

©Sharper Image. All Rights Reserved.