

AIRCANDY

ILLUMINATED

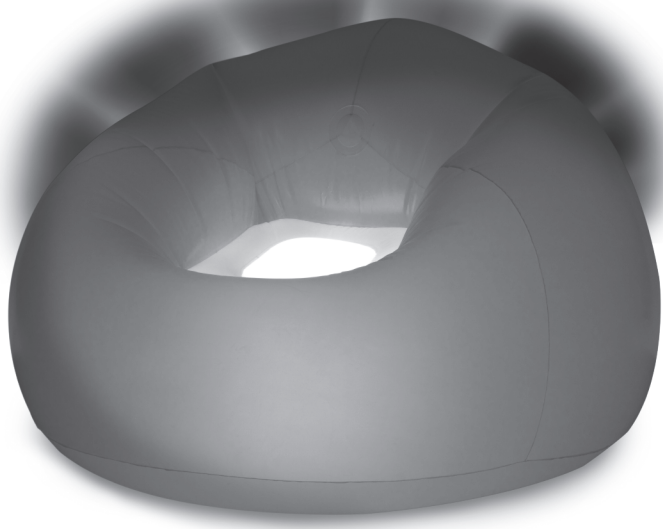
INFLATABLE LED BLOCHAIR



INSTRUCTION & CARE MANUAL

GETTING TO KNOW YOUR AIRCANDY CHAIR

Congratulations on your purchase of the AirCandy Inflatable Chair. It is comfortable, durable, and fully adjustable. Manufactured with heavy-duty PVC and 100% waterproof, the AirCandy Inflatable Chair is ideal for use both indoors and outdoors.



Please inflate for your own comfort as it does vary from person to person. A full inflation will make the chair very firm and a slightly lower inflation will provide a beanbag-effect, allowing you to sink into the chair. Please use caution to not overinflate the chair.

USING THE REMOTE FOR YOUR ILLUMINATED INFLATABLE CHAIR

The remote control handles the functions of the multi-colored LED light disc. When using the remote for the first time, please pull out the battery protection tab to activate the battery.

Please refer to the diagram on the next page for an explanation of the buttons.

- A. Left – Brightness Up
Right – Brightness Down
- B. Left – Power Off
Right – Power On
- C. With the combination of 12 colors and 10 different brightness levels you have over 120 color option combinations to chose from throughout the various special light modes.

Flash – Want your chair to stand out? Show it off with 'Flash'

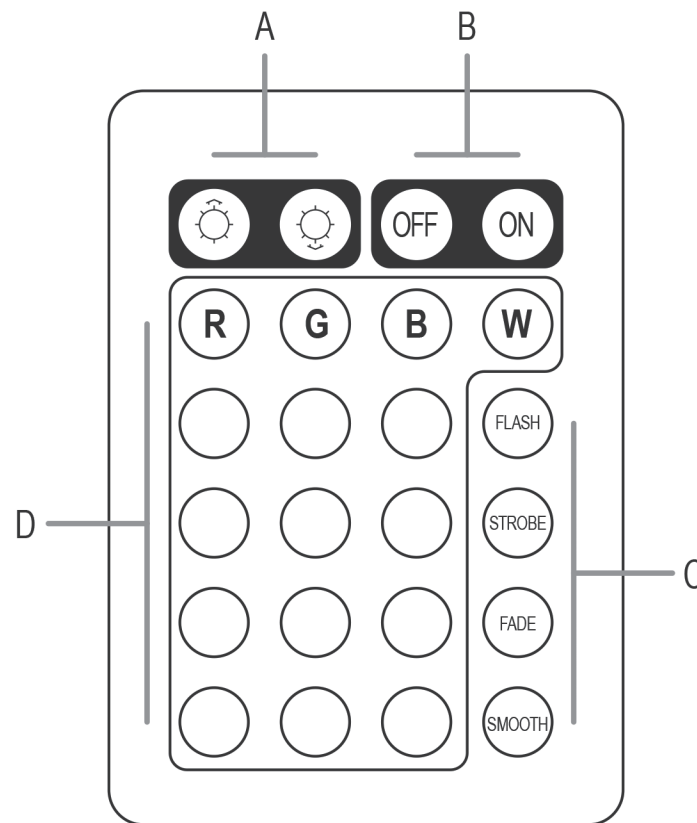
Strobe – If you're throwing a party, you can let the Chair help set the mood.

Fade – If you are looking to mellow out and relax, 'Fade' is meant for you.

Smooth – For the times you want to chill while colors float around the room. 'Smooth' is sure to be what you are looking for.

- D. Color Shades – choose from the various colors until you find the one that is just right for you. For best lighting results, use the illuminated chair in a dark room or at night when outdoors.

USING THE REMOTE FOR YOUR ILLUMINATED INFLATABLE CHAIR



NOTE – REMOTE CONTROL IS NOT WATERPROOF.

Remote control requires 1 x CR2025 battery, included.

LIMITED 90-DAY WARRANTY

B&D Group, LLC, warrants to the original consumer that its products are free from any electrical or mechanical defects for a period of 90 days from the date of purchase. If any such defect is discovered within the warranty period, B&D Group, LLC. will repair or replace the unit free of charge upon receipt of the unit, shipping postage prepaid and insured to the factory address received from Customer Service. The warranty covers normal consumer use and does not cover damage that occurs in shipment or failure that results from alterations, accident, misuse, abuse, neglect, wear and tear, inadequate maintenance, commercial use, or unreasonable use of the unit. Removal of any panels voids all warranties. This warranty does not cover cost of repairs made or attempted outside the factory. Any applicable implied warranties, including warranties of merchantability and fitness are hereby limited to 90 days from the date of purchase. Expressed or incidental damages resulting from a breach of any applicable express or implied warranties are hereby excluded. Some states do not allow limitations on the duration of implied warranties and do not allow exclusion of incidental or consequential damages, so the above limitations and exclusions in these instances may not apply. The only authorized service center in the United States would be communicated from Customer Service. Ship the unit carefully packed, preferably in the original carton, and send it prepaid, and adequately insured. Include a letter detailing the complaint or issue, along with your daytime telephone number, name and address inside the shipping carton. If your warranty has expired and you want an estimated fee for service, write to Service@BandDGroup.com, specifying the model number and the problem.

PLEASE DO NOT SEND YOUR UNIT WITHOUT RECEIVING AN ESTIMATE FOR SERVICING. WE CANNOT STORE YOUR UNIT.

WARNING:

Adult supervision required for inflation, deflation and maintenance. Follow all safety instructions to avoid serious injury.

- For household/residential use only.
- This chair is not intended for infants or persons with limited mobility.
- Place the chair in a safe area before use, making sure that there are no sharp edges, steps, drops, or breakable items nearby.
- Use on flat surfaces only. Do not use this chair on abrasive surfaces or near sharp or pointed objects.
- Keep this chair away from heaters, flames, sparks, or any heat source.
- Do not use this chair while using hot or sharp objects.
- Store your chair in a clean dry place at room temperature (above 50°F/10°C). Storing your Chair under 50°F (10°C) and over 100°F (38°C) may affect its performance and will not be covered under warranty.
- Do not jump on the chair.

CAUTION:

Do not place on rough ground or near sharp objects as this may cause damage to your chair.

INFLATING & DEFLATING YOUR AIRCANDY CHAIR

Preparation of your inflatable chair requires no tools. However, we recommend using a pump for easiest set up.

There are two nozzles on the bottom of the chair that need to be inflated. The outer nozzle controls the outer area of the chair and the inner nozzle controls the seat.

Please inflate for your own comfortability as it does vary from person to person. A full inflation will make the chair very firm and a slightly lower inflation will provide a bean bag type effect allowing you to sink into the chair. Please use caution to not over inflate the chair.



Once inflated there is a cavity in the bottom of the seat. This is where the lighting device gets placed. The light unit requires 3 x AAA batteries, not included.

NOTE: For best performance in the water, reduce the air in the chair to in order to bring your body closer to the water level. At night time, prepare for an amazing experience with your Illuminated Chair.

CAUTION: The Remote is not waterproof. Do not operate the remote control while in the water and never open the battery compartment when wet.

INFLATING & DEFLATING YOUR AIRCANDY CHAIR

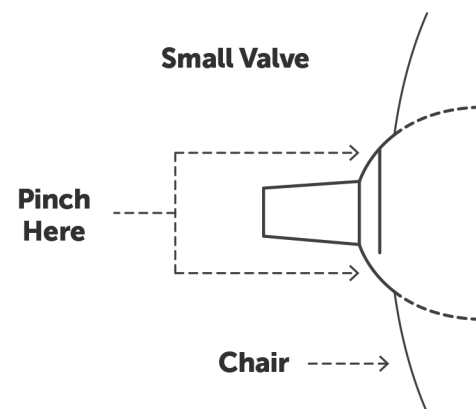
TO DEFLATE:

1. Open the air valve to release the air. Pinch the valve open for best results.
2. For fastest results, use an electric air pump with the hose in the 'Deflate' position.
Be sure to open the air valve completely.

Inflating with a Blow Dryer (some models)

SMALL CHAMBER WITH THE SMALL VALVE

Inflate this area by mouth by pinching the valve gently to open the airway, then blowing air into the chamber. You can adjust the pressure for maximum comfort by adding a few more puffs of air, or by opening the valve to release excess pressure. Close the valve and press the closed valve into the inflatable so that it is flat with the surface.



INFLATING & DEFLATING YOUR AIRCANDY CHAIR

Inflating with a Blow Dryer (some models)

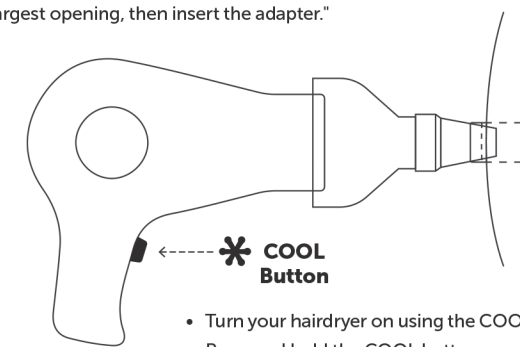
LARGE CHAMBER WITH THE LARGE VALVE

- * Use only with hairdryers that include a COOL button.
Press and HOLD the COOL button during inflation.

- Screw the nozzle onto the Blow Dryer Adapter
- Open the large valve completely, exposing the largest opening, then insert the adapter."

NOTE:

The Blow Dryer Adapter may fit slightly loose or tight, depending on your hairdryer model.



- * **COOL Button**
- Turn your hairdryer on using the COOL setting. Press and hold the COOL button.
- DO NOT RELEASE THE COOL BUTTON.

NOTE:

The Blow Dryer Adapter will help fill your chair to about 80-90% capacity. To increase the air pressure in your chair, you may need to add additional air by blowing with your mouth, or by using an electric pump.

- To add air to the large chamber by mouth, open the smaller top cap on the large valve, gently pinch the valve, and blow air into the chamber
- Close the valve completely and press the closed valve into the inflatable so that it is flat with the surface.

CAUTION

The adapter may become warm during use. If your chair, hairdryer, or Blow Dryer Adapter become hot, turn the dryer off and allow to cool before continuing. Use only on 'Cool' setting. Follow all instructions from your hair dryer manufacturer.



Care, Maintenance & Storage

1. Inspect your chair prior to each use.
2. Keep your chair away from sharp objects. Large cuts or snags may not be repairable and will not be covered by your warranty.
3. In case of incidental damage to your chair, a repair kit has been included. Please follow repair instructions carefully as shown on the patch.
4. To clean your chair, use soap and water with a wash cloth.
For covered chairs, please follow care instructions on the sewn-in label.
5. To store your chair, make sure it is deflated and completely dry. Store your chair in a clean, dry place at room temperature.

Service

For Customer Service or if you need to service your product please email: Service@BandDGroup.com. Please note the product model number, your name and phone number in the email message.

Legal

AirCandy is a trademark of B&D Group, LLC.
Distributed by B&D Group, Miami, FL. ©2018. All rights reserved.

MODIFICATION NOT APPROVED BY B&D GROUP, LLC. VOIDS WARRANTY.
ACTUAL PRODUCT MAY VARY SLIGHTLY FROM PHOTOGRAPH.

www.BandDGroup.com

MADE IN CHINA



PIXELWARPSSTUDIOS

AIRCANDY

File Name:
BDG_IM_AC_ILLUMINATED_BLOCHAIR_v01.00.00
_AC3010MU_GRAY_PRESS.ai

Project Type / Product
Illuminated BloChair Packaging

Version:
01.00.00

Brand/Manufacturer
AirCandy® BloChair

Constructed Dimensions:
5" w x 6" h (12.7 cm w x 15.24 cm h)

Flat Dimensions:
TBA

Box ID:
NA

Creation
08.01.2017

Revisions
11.19.2020

Created By:
Ariel M. / Dee S. / Renata M.

Contact:
Ariel - pixelwarps@gmail.com

Outer Paper / Finish:
60 lb. uncoated paper stock

Inner Paper / Finish:
NA

Press Notes:

Bleed

Carton Die Cut / Pattern Trim

Carton Score / Pattern Seal

Crop Marks / Info

Perforation

Feature Area

Unit Area

Glue Area

Spot UV / Spot Varnish

PANTONE / SPECIAL COLORS

NA

NA

NA

NA

NA

NA

NA

NA

PRODUCTION CROSS REFERENCE

NA

NA

NA

NA

NA

NA

NA

NA

Inks (for Press):

C

M

Y

K

NOTES:

Physical sample/mockup must be approved before production can commence.

DO NOT PRINT comments or die lines.

AIRCANDY

ILLUMINATED

INFLATABLE LED BLOCHAIR

INSTRUCTION & CARE MANUAL

GETTING TO KNOW YOUR AIRCANDY CHAIR

Congratulations on your purchase of the AirCandy Inflatable Chair. It is comfortable, durable, and fully adjustable. Manufactured with heavy-duty PVC and 100% waterproof, the AirCandy Inflatable Chair is ideal for use both indoors and outdoors.

Please inflate for your own comfort as it does vary from person to person. A full inflation will make the chair very firm and a slightly lower inflation will provide a beanbag-effect, allowing you to sink into the chair. Please use caution to not overinflate the chair.

USING THE REMOTE FOR YOUR ILLUMINATED INFLATABLE CHAIR

The remote control handles the functions of the multi-colored LED light disc. When using the remote for the first time, please pull out the battery protection tab to activate the battery.

Please refer to the diagram on the next page for an explanation of the buttons.

A. Left – Brightness Up
Right – Brightness Down

B. Left – Power Off
Right – Power On

C. With the combination of 12 colors and 10 different brightness levels you have over 120 color option combinations to chose from throughout the various special light modes.

Flash – Want your chair to stand out? Show it off with 'Flash'

Strobe – If you're throwing a party, you can let the Chair help set the mood.

Fade – If you are looking to mellow out and relax, 'Fade' is meant for you.

Smooth – For the times you want to chill while colors float around the room. 'Smooth' is sure to be what you are looking for.

D. Color Shades – choose from the various colors until you find the one that is just right for you. For best lighting results, use the illuminated chair in a dark room or at night when outdoors.

INFLATING & DEFLATING YOUR AIRCANDY CHAIR

Preparation of your inflatable chair requires no tools. However, we recommend using a pump for easiest set up.

There are two nozzles on the bottom of the chair that need to be inflated. The outer nozzle controls the outer area of the chair and the inner nozzle controls the seat.

Please inflate for your own comfortability as it does vary from person to person. A full inflation will make the chair very firm and a slightly lower inflation will provide a bean bag type effect allowing you to sink into the chair. Please use caution to not over inflate the chair.

Once inflated there is a cavity in the bottom of the seat. This is where the lighting device gets placed. The light unit requires 3 x AAA batteries, not included.

NOTE: For best performance in the water, reduce the air in the chair to in order to bring your body closer to the water level. At night time, prepare for an amazing experience with your Illuminated Chair.

CAUTION: The Remote is not waterproof. Do not operate the remote control while in the water and never open the battery compartment when wet.

USING THE REMOTE FOR YOUR ILLUMINATED INFLATABLE CHAIR

NOTE – REMOTE CONTROL IS NOT WATERPROOF.
Remote control requires 1 x CR2025 battery, included.

INFLATING & DEFLATING YOUR AIRCANDY CHAIR

TO DEFLATE:

1. Open the air valve to release the air. Pinch the valve open for best results.
2. For fastest results, use an electric air pump with the hose in the 'Deflate' position. Be sure to open the air valve completely.

Inflating with a Blow Dryer (some models)

SMALL CHAMBER WITH THE SMALL VALVE

Inflate this area by mouth by pinching the valve gently to open the airway, then blowing air into the chamber. You can adjust the pressure for maximum comfort by adding a few more puffs of air, or by opening the valve to release excess pressure. Close the valve and press the closed valve into the inflatable so that it is flat with the surface.

LIMITED 90-DAY WARRANTY

B&D Group, LLC, warrants to the original consumer that its products are free from any electrical or mechanical defects for a period of 90 days from the date of purchase. If any such defect is discovered within the warranty period, B&D Group, LLC, will repair or replace the unit free of charge upon receipt of the unit, shipping postage prepaid and insured to the factory address received from Customer Service. The warranty covers normal consumer use and does not cover damage that occurs in shipment or failure that results from alterations, accident, misuse, abuse, neglect, wear and tear, inadequate maintenance, commercial use, or unreasonable use of the unit. Removal of any panels voids all warranties. This warranty does not cover cost of repairs made or attempted outside the factory. Any applicable implied warranties, including warranties of merchantability and fitness are hereby limited to 90 days from the date of purchase. Expressed or incidental damages resulting from a breach of any applicable express or implied warranties are hereby excluded. Some states do not allow limitations on the duration of implied warranties and do not allow exclusion of incidental or consequential damages, so the above limitations and exclusions in these instances may not apply. The only authorized service center in the United States would be communicated from Customer Service. Ship the unit carefully packed, preferably in the original carton, and send it prepaid, and adequately insured. Include a letter detailing the complaint or issue, along with your daytime telephone number, name and address inside the shipping carton. If your warranty has expired and you want an estimated fee for service, write to Service@BandDGroup.com, specifying the model number and the problem.

PLEASE DO NOT SEND YOUR UNIT WITHOUT RECEIVING AN ESTIMATE FOR SERVICING. WE CANNOT STORE YOUR UNIT.

INFLATING & DEFLATING YOUR AIRCANDY CHAIR

Inflating with a Blow Dryer (some models)

LARGE CHAMBER WITH THE LARGE VALVE

NOTE: Use only with hairdryers that include a COOL button. Press and HOLD the COOL button during inflation.

- Screw the nozzle onto the Blow Dryer Adapter
- Open the large valve completely, exposing the largest opening, then insert the adapter."

- Turn your hairdryer on using the COOL setting. Press and hold the COOL button.
- DO NOT RELEASE THE COOL BUTTON.

NOTE:

The Blow Dryer Adapter will help fill your chair to about 80-90% capacity. To increase the air pressure in your chair, you may need to add additional air by blowing with your mouth, or by using an electric pump.

- To add air to the large chamber by mouth, open the smaller top cap on the large valve, gently pinch the valve, and blow air into the chamber
- Close the valve completely and press the closed valve into the inflatable so that it is flat with the surface.

CAUTION

The adapter may become warm during use. If your chair, hairdryer, or Blow Dryer Adapter become hot, turn the dryer off and allow to cool before continuing. Use only on 'Cool' setting. Follow all instructions from your hair dryer manufacturer.

WARNING:

Adult supervision required for inflation, deflation and maintenance. Follow all safety instructions to avoid serious injury.

- For household/residential use only.
- This chair is not intended for infants or persons with limited mobility.
- Place the chair in a safe area before use, making sure that there are no sharp edges, steps, drops, or breakable items nearby.
- Use on flat surfaces only. Do not use this chair on abrasive surfaces or near sharp or pointed objects.
- Keep this chair away from heaters, flames, sparks, or any heat source.
- Do not use this chair while using hot or sharp objects.
- Store your chair in a clean dry place at room temperature (above 50°F/10°C). Storing your Chair under 50°F (10°C) and over 100°F (38°C) may affect its performance and will not be covered under warranty.
- Do not jump on the chair.

CAUTION:

Do not place on rough ground or near sharp objects as this may cause damage to your chair.

Care, Maintenance & Storage

1. Inspect your chair prior to each use.
2. Keep your chair away from sharp objects. Large cuts or snags may not be repairable and will not be covered by your warranty.
3. In case of incidental damage to your chair, a repair kit has been included. Please follow repair instructions carefully as shown on the patch.
4. To clean your chair, use soap and water with a wash cloth. For covered chairs, please follow care instructions on the sewn-in label.
5. To store your chair, make sure it is deflated and completely dry. Store your chair in a clean, dry place at room temperature.

Service

For Customer Service or if you need to service your product please email: Service@BandDGroup.com. Please note the product model number, your name and phone number in the email message.

Legal

AirCandy is a trademark of B&D Group, LLC. Distributed by B&D Group, Miami, FL. ©2018. All rights reserved.

MODIFICATION NOT APPROVED BY B&D GROUP, LLC. VOIDS WARRANTY. ACTUAL PRODUCT MAY VARY SLIGHTLY FROM PHOTOGRAPH.

www.BandDGroup.com

MADE IN CHINA