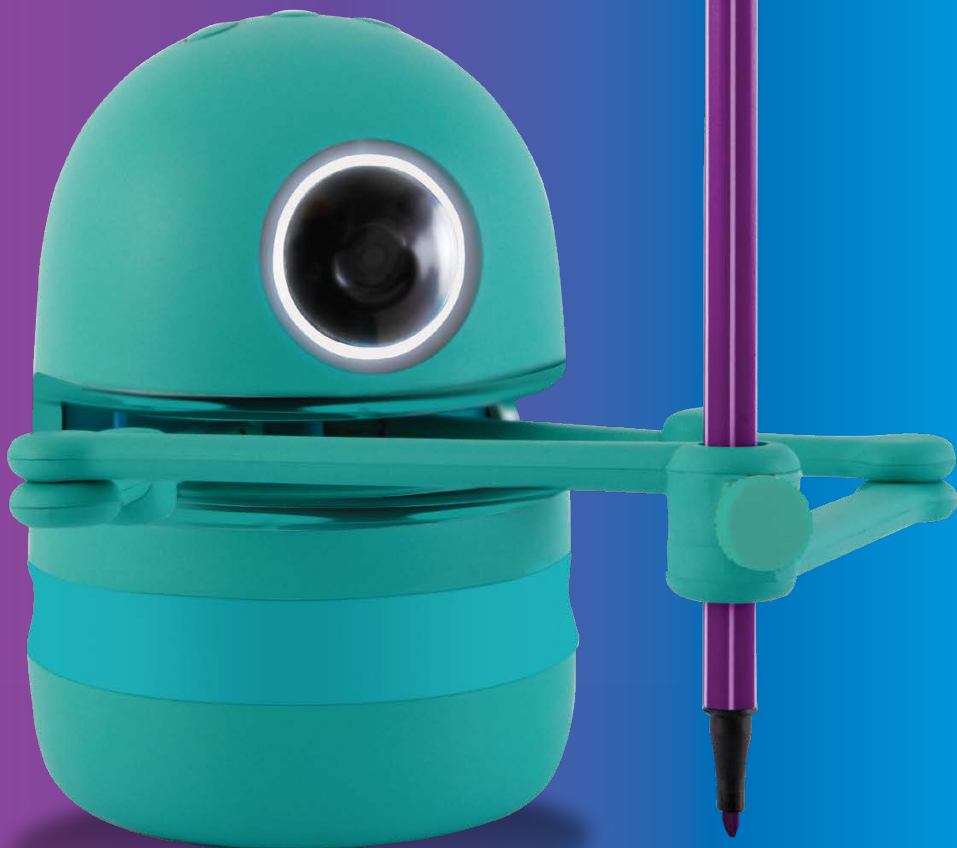


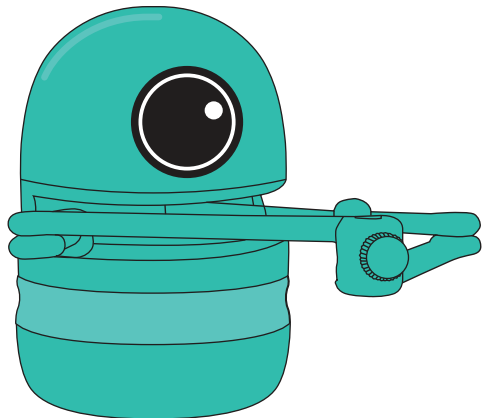
# Quincy

the robot artist



# User Guide

# in The Box



Quincy Robot



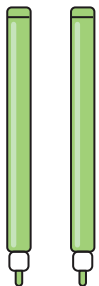
24 Picture Cards



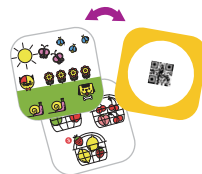
26 Letter Cards



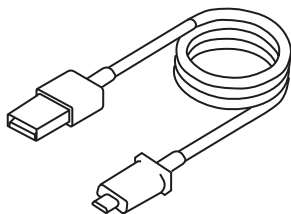
10 Number Cards



2 Pens



4 Math Challenge Cards



USB Cable

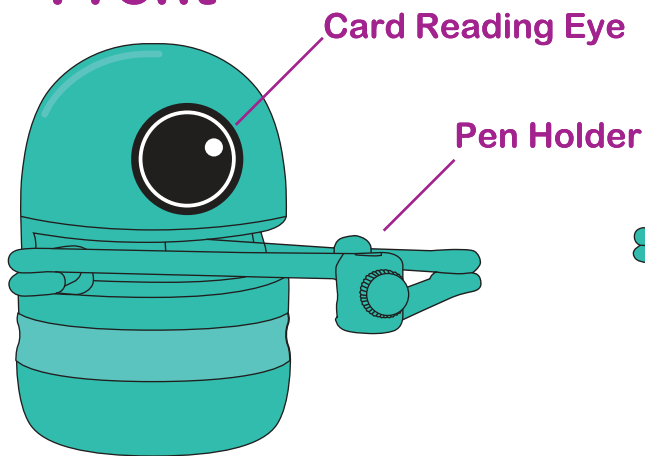


4 Activity Books

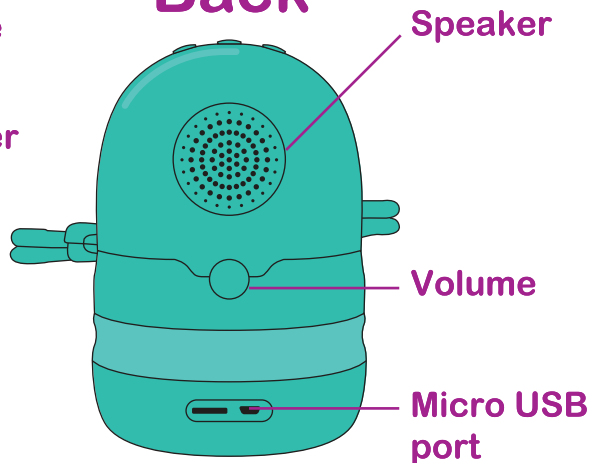
Quincy

# Meet The Artist

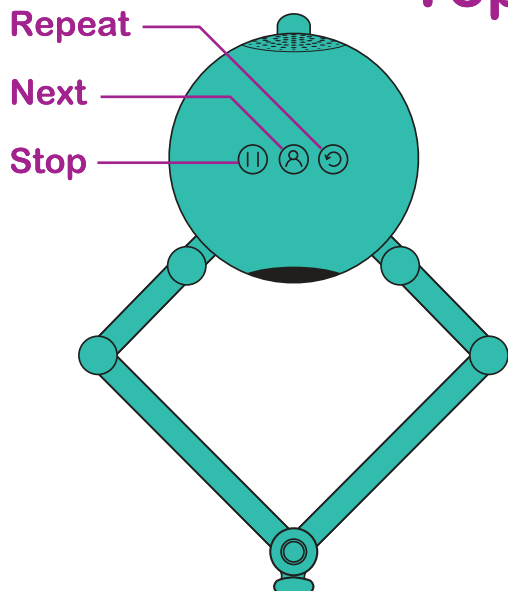
## Front



## Back



## Top



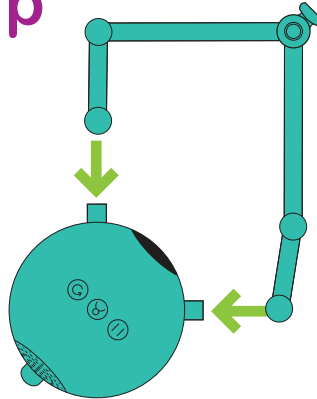
1. If you miss the last step/question press the Repeat button.
2. Press the Next button to go to next step/question or repress this button to get the right answer if you don't know the answer.
3. Press the Stop button if you want to switch to another card before you finish the current one

# Let's Get Started!

## Step 1: Set Me Up

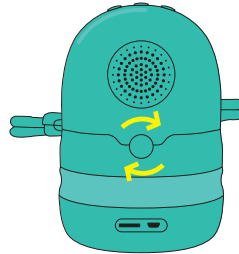
Install the robotic arm:

1. Hold the arm as shown
2. The magnets will connect the arm with the body.



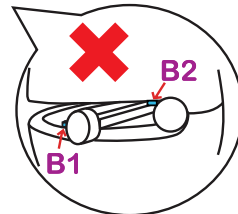
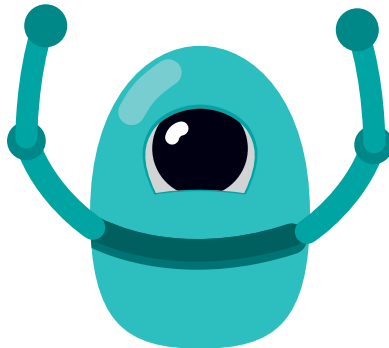
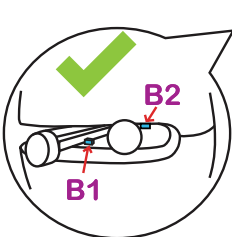
Turn on the robot:

1. Rotate the Volume knob to the right..
2. Quincy will say Nice to meet you and the eye will light on.
3. The arm will return to the rear.



**Attention!**

Do not move the arm over the little block (B1&B2 as shown)



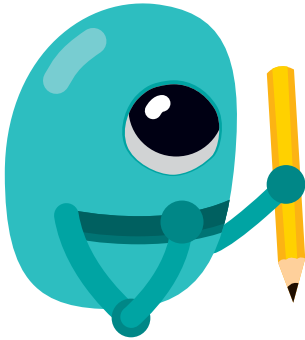
**Quincy**

# Let's Get Started!

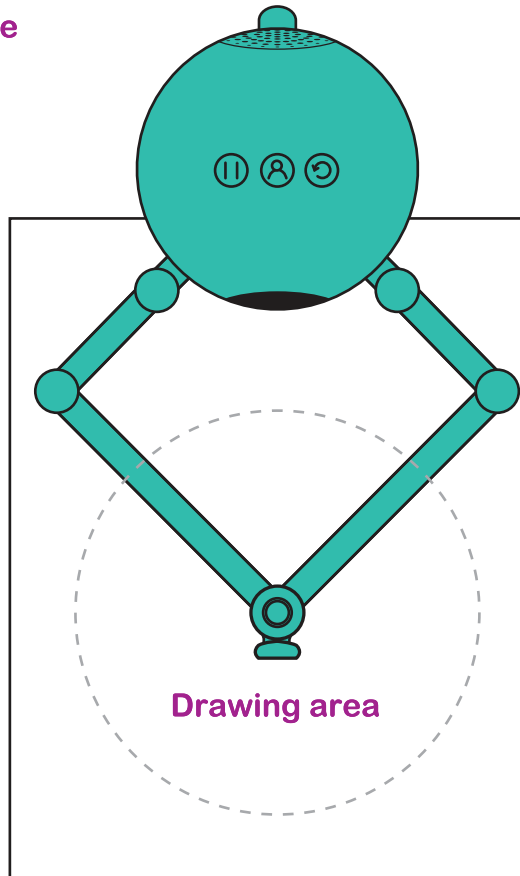
## Step 2: Where Can I Draw?

Set up the robot on the middle and top of the paper.

**TIP:**  
Only put 1/3 of the robot on the paper.



letter size paper



# Let's Get Started!

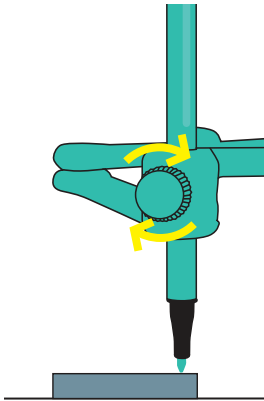
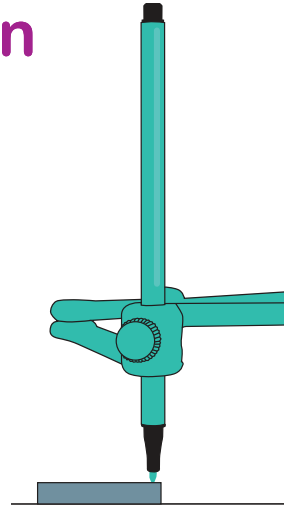
## Step 3: Installing My Pen

1cm



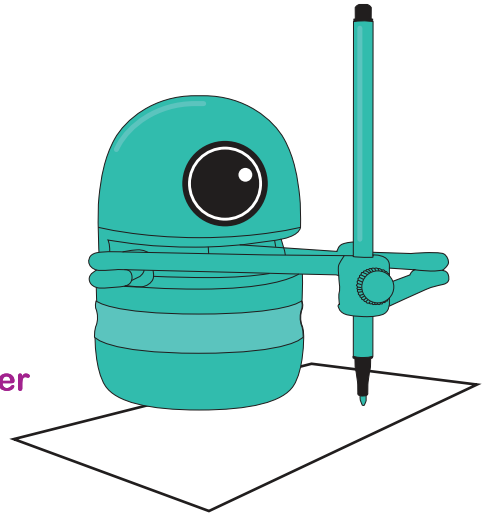
1. Take the supplied pen or any pen that less than 1cm in diameter.

2. Place the included spacer under the tip of the pen



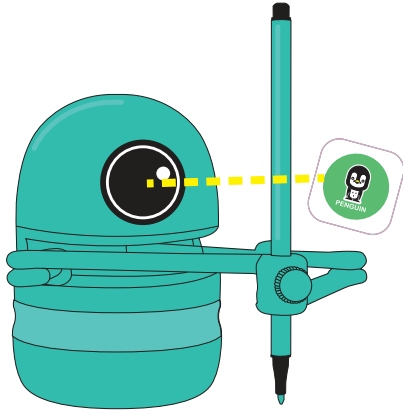
3. Twist the knob clockwise to fix the pen.

4. Remove the spacer to draw!

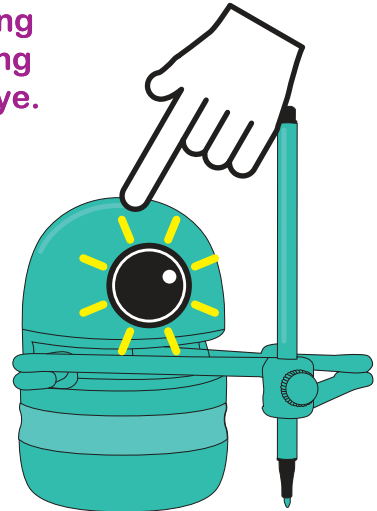


Quincy

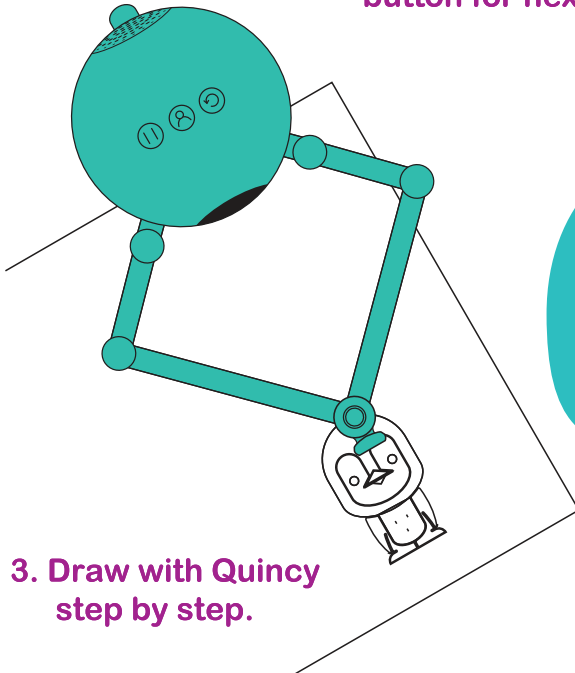
# Time To Draw!



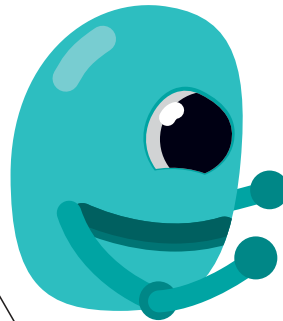
1. Prepare your pen and paper. Start drawing by show the drawing card to Quincy's eye.



2. When the light is flashing, press NEXT button for next step



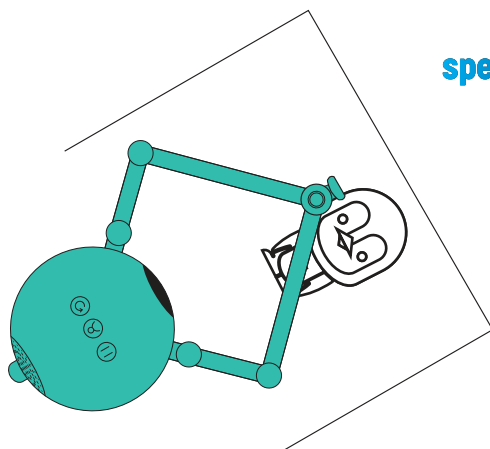
3. Draw with Quincy step by step.



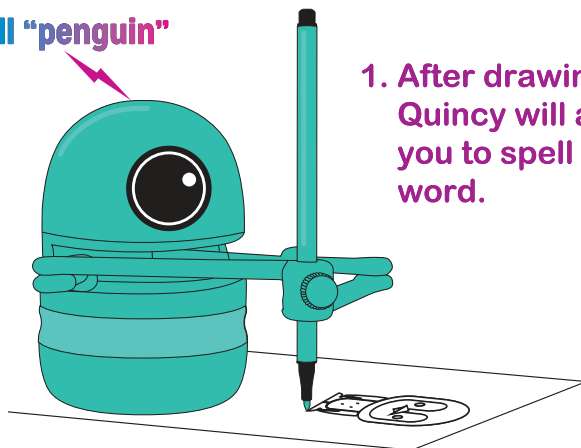
**TIP:**  
To ensure the best performance, do not move the Quincy while he's working!

**Quincy**

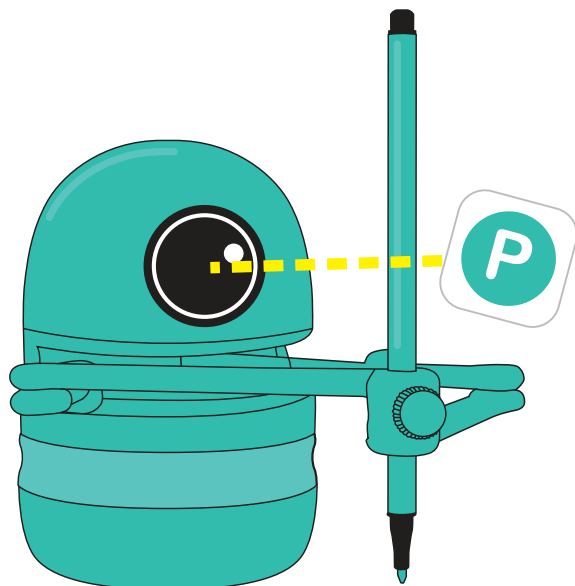
# Play a Spelling Game!



spell "penguin"



1. After drawing, Quincy will ask you to spell the word.

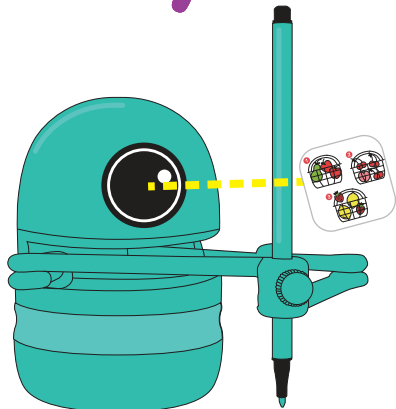


3. Use the spelling cards to spell for Quincy. Show him each one in order to complete the challenge!

Quincy

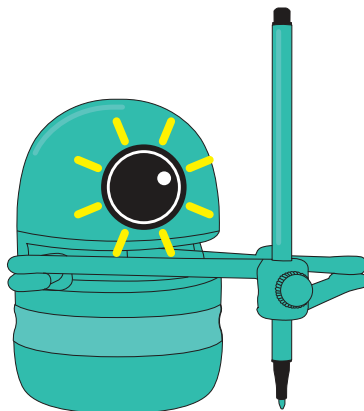


# Storytime & Math Fun!

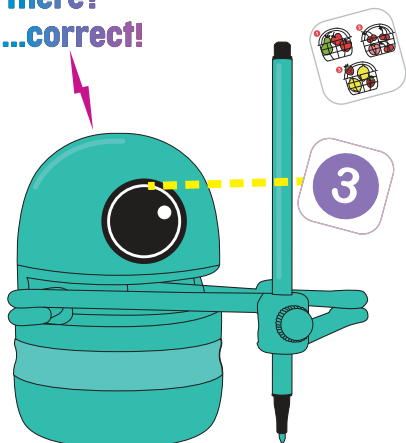


1. There are four picture card themes: Orchard, Room, Yard & Zoo. Each picture theme has a special Story card. Show this card to Quincy.

2. Press the NEXT button when the light is flashing. Quincy will tell you a story about the scene on the card.



how many baskets  
are there?  
...correct!

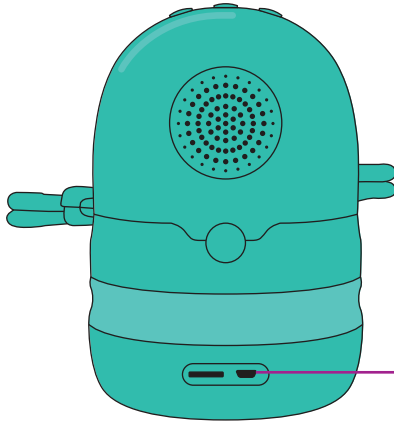


3. While telling the story, Quincy will ask you math questions. Use the number cards to answer!

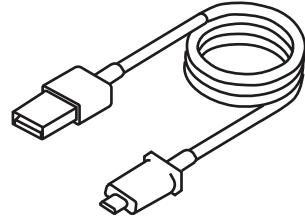
When the light is flashing, you can always press the REPEAT button, if you do not know what to do.

**Quincy**

# Power Me Up



Micro USB 2.0  
port



USB cable

Charge the robot with the USB cable provided, under adult supervision.

1. Start charging: when cable plugged in, the robot should say “start charging”
2. While charging, the front light will flash on & off.
3. When fully Charged, the robot will say “charging is completed”. The front light will stop flashing and stay on.
4. Charging usually takes 2 hours, please unplug the cable when the charging is completed.



## Warning!

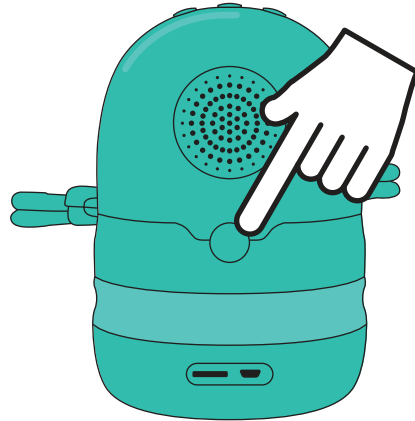
- Do not use the robot while it is charging.
- Always follow use and charging instructions to avoid injury, fire risk or damage.
- Never use a power source that is damaged.

**Quincy**

# Troubleshooting

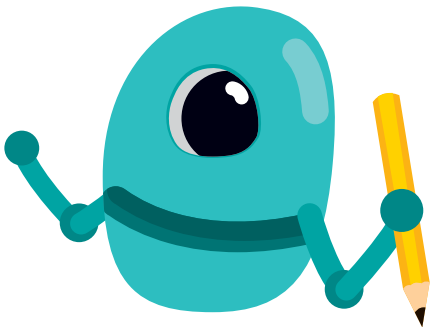
## Cases:

1. Card scanning no response;
2. Button no response;
3. No sound;
4. Any other cases that robot not working properly.



## Common Solutions:

1. Restart the robot;
2. Pull the arm to the frontal direction of the robot, then restart the robot;
3. Unplug the USB cable (if the cable is plugged), then restart the robot.



Customer Support:  
email: [support@landzo.cn](mailto:support@landzo.cn)

**LANDZO**

**Quincy**

# FCC Statement

Changes or modifications not expressly approved by the party responsible for compliance could void the user's authority to operate the equipment.

This equipment has been tested and found to comply with the limits for a Class B digital device, pursuant to Part 15 of the FCC Rules. These limits are designed to provide reasonable protection against harmful interference in a residential installation. This equipment generates uses and can radiate radio frequency energy and, if not installed and used in accordance with the instructions, may cause harmful interference to radio communications. However, there is no guarantee that interference will not occur in a particular installation. If this equipment does cause harmful interference to radio or television reception, which can be determined by turning the equipment off and on, the user is encouraged to try to correct the interference by one or more of the following measures:

- Reorient or relocate the receiving antenna.
- Increase the separation between the equipment and receiver.
- Connect the equipment into an outlet on a circuit different from that to which the receiver is connected.
- Consult the dealer or an experienced radio/TV technician for help

This device complies with part 15 of the FCC rules. Operation is subject to the following two conditions (1) this device may not cause harmful interference, and (2) this device must accept any interference received, including interference that may cause undesired operation.



# My Specifications

Name	Quincy, the robot artist
Weight	TBD
Size	153*105mm
Power	5V2A
Working time	TBD
Battery	TBD

Model: WD1C

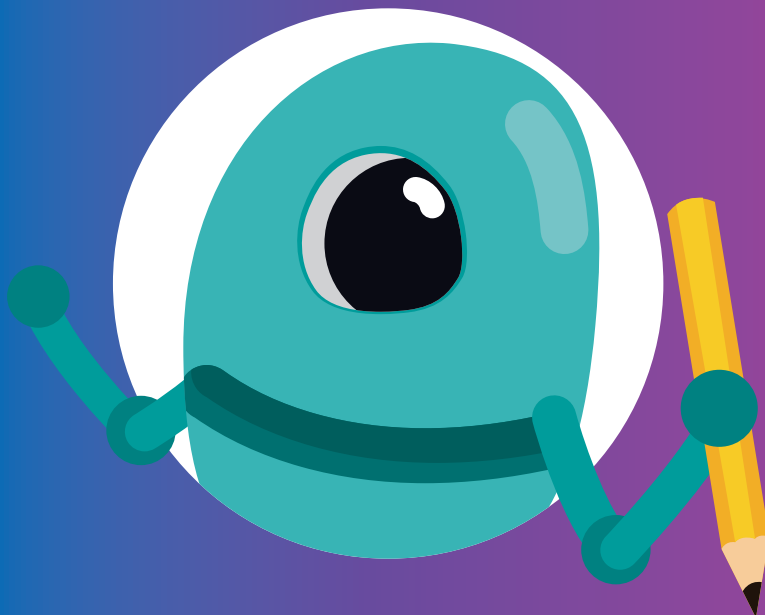
FCC ID: 2ARTK-WD1C

This device complies with part 15 of the FCC rules. Operation is subject to the following two conditions (1) this device may not cause harmful interference, and (2) this device must accept any interference received, including interference that may cause undesired operation.



# Quincy

the robot artist



More information and support at:  
[www.landzo.com](http://www.landzo.com)

LANDZO