

Thank you for choosing

VABROOM®

.....

the

2-in-1 SWEEPER WITH BUILT-IN VACUUM

© 2021 EPD Inc.



SAVE THIS MANUAL FOR FUTURE REFERENCE

Register your new VaBroom® at
vabroom.com/newowner

For additional information or questions, or before returning
this product for any reason please email customer service at
contact@vabroom.com

Please have receipt, and product number ready.

Product Number:
VB-LIG1-01

Your Opinion Matters! ★★★★★

Help us grow and continue to deliver quality products and services
by sharing your VaBroom experience at **vabroom.com/feedback**



WARNING



PLEASE READ AND UNDERSTAND ALL INSTRUCTIONS BEFORE USING THE UNIT

When using electrical appliances, basic safety precautions should always be followed, including the following to reduce the risk of fire, electrical shock, or injury:

- Do not allow VaBroom® to run unattended.
- Close supervision is necessary when any appliance is used by or near children. Do not allow to be used as a toy.
- To protect against risk of electrical shock, do not put unit or charging cord in water or other liquid. Do not handle plug or appliance with wet hands.
- Do not use VaBroom® to pick up liquids, toxic substances, flammable or combustible liquids such as gasoline or use in areas where they may be present.
- Do not operate in the presence of explosives and/or flammable fumes or liquids.
- Do not vacuum burning or smoking materials, such as lit cigarette butts, matches or hot ashes.
- Do not use outdoors or on wet surfaces.
- Do not use on or near hot surfaces.
- Do not abuse the cord. Never yank to disconnect from an outlet; instead grasp the charger and pull to disconnect. Keep cord away from heated surfaces. Do not pull cord around sharp edges or corners. Do not allow the cord to hang over the edge of a table or counter or touch hot surfaces. The unit should be placed or mounted away from sinks and hot surfaces.
- Do not operate any appliance with a damaged cord or after the appliance malfunctions, is left outdoors, dropped into water or is damaged in any manner.
- Keep hair, loose clothing, and all parts of body away from openings and moving parts.
- Do not operate or engage the pressure activated nozzle switch while charging.
- Use extra caution when cleaning on stairs.
- Unplug the charger from VaBroom® before any routine cleaning or maintenance.
- Wipe screen gently with finger to remove lint buildup. Keep free of dust, lint, hair, and anything that may reduce air flow.
- Do not forcefully apply pressure to the screen wall filter inside of the debris compartment. Damage may occur.
- If tube clogs occur, empty the debris compartment, keep debris window open, use a pipe cleaner to free debris from tube. Wear eye protection when cleaning parts.
- Keep nozzle rubber clean and free of debris to avoid scratching of floors. Do not apply excessive downward force to prevent damage to flooring or the VaBroom nozzle.
- This product includes rechargeable lithium batteries. Do not incinerate batteries as they will explode at high temperatures.
- Do not throw lithium batteries into normal trash. Contact a local battery recycling or collection location for proper disposal.
- The battery used in this device may present a risk of fire or chemical burn if mistreated. Do not disassemble, heat above manufacturer's maximum temperature limit, or incinerate. Dispose of battery promptly.
- This product contains chemicals known to the State of California to cause cancer, birth defects or reproductive harm. WASH HANDS AFTER USING.
- VaBroom® is intended for personal household use only and not for commercial or industrial use.
- IMPORTANT: To assure product SAFETY and RELIABILITY, repairs, maintenance and adjustment (other than those listed in this manual) should be performed by authorized service centers, always using identical replacement parts.

FCC Compliance: This equipment has been tested and found to comply with the limits for a Class B digital device, pursuant to part 15 of the FCC Rules. These limits are designed to provide reasonable protection against harmful interference in a residential installation. This equipment generates, uses, and can radiate radio frequency energy and, if not installed and used in accordance with the instructions, may cause harmful interference to radio communications. However, there is guarantee that interference will not occur in a particular installation. If this equipment does cause harmful interference to radio or television reception, which can be determined by turning the equipment off and on, the user is encouraged to try to correct the interference by one or more

of the following measures:

- Reorient or relocate the receiving antenna.
- Increase the separation between the equipment and receiver.
- Connect the equipment into an outlet on a circuit different from that to which the receiver is connected.
- Consult the dealer or an experienced radio/TV technician for help.

Changes or modification not expressly approved by the party responsible for compliance could void the user's authority to operate this device.

FULL ONE-YEAR HOME USE WARRANTY

The manufacturer warrants this product for one year against any defects in material or workmanship. The defective product will be replaced or repaired at no charge in one of two ways:

The first, which will result in exchanges only, is to return the product to the retailer from whom it was purchased (provided that the store is a participating retailer).

Returns should be made within the time period of the retailer's policy for exchanges (usually 30 to 90 days after the sale). Proof of purchase may be required. Please check with the

retailer for their specific return policy regarding returns that are beyond the time set for exchanges.

The second, email customer service at **contact@vabroom.com**

This warranty does not apply to accessories. This warranty gives you specific legal rights and you may have other rights which vary from state to state or province to province.

Should you have any questions, email customer service at **contact@vabroom.com**

This product is not intended for commercial use.

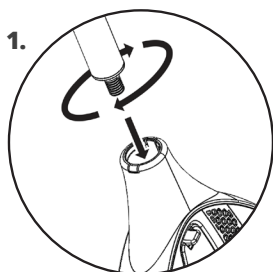
Made in China

PARTS INVENTORY

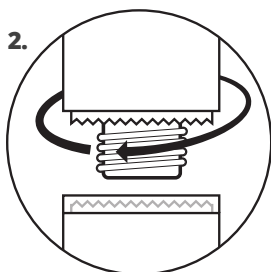


Product may vary from images shown

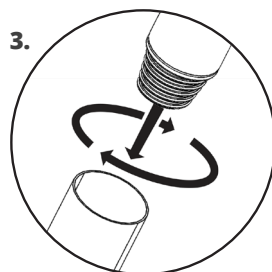
QUICK ASSEMBLY



1. Insert the threaded end of the lower handle section (D) into the top of the VaBroom® Unit (A) and twist clockwise.

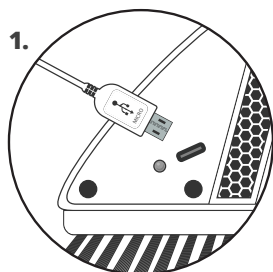


2. Twist clockwise to tighten until the interlocking-teeth perfectly secures each section tightly together.

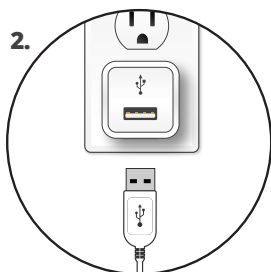


3. Insert the threaded end of the mid handle section (C) into section (D). Then insert section (B) into section (C).

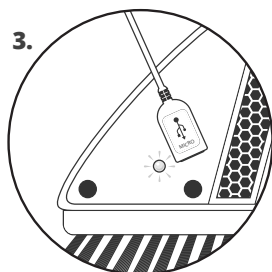
CHARGING



1. Insert the micro end of charging cable (E) into the charge port on the back of the VaBroom® Unit (A).



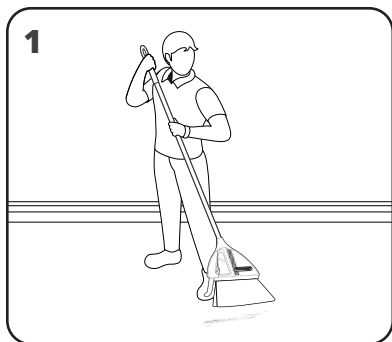
2. Insert the USB-A end of the charging cable into a USB power source.



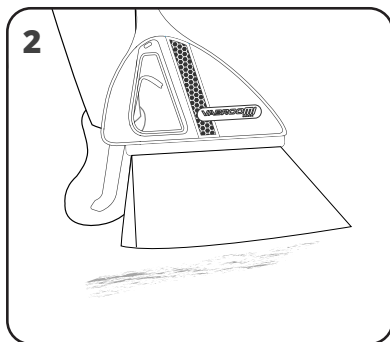
3. The charging light indicator will illuminate green when the battery is fully charged and ready for cordless use.

Charge up time from 0% to 100% is approximately 4-6 hours.

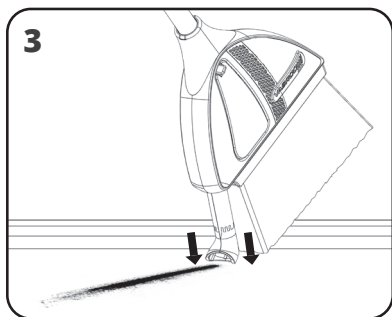
PROPER USE Avoid vacuuming items greater than 1 cm in width, or long hairs and string as these items may clog suction.



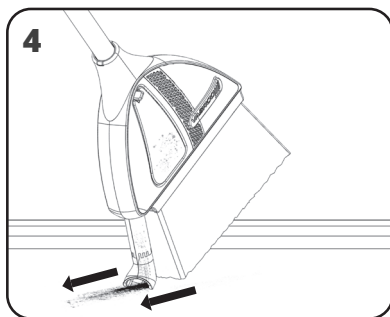
Use VaBroom® to sweep hard surfaces.



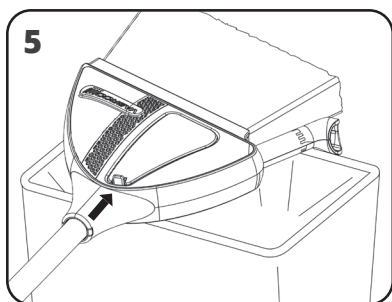
Sweep debris into a line.



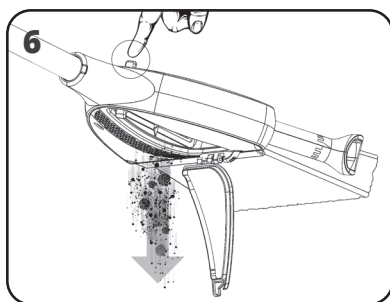
Point the nozzle opening at the start of your debris line. Gently push the nozzle against the floor to turn ON the vacuum suction.



Continue to drag the nozzle against the floor to suck up the debris. Lift the nozzle up, off the floor to turn OFF suction.



TO EMPTY DEBRIS, position the "Bombs Away Door" facing downward over the trash can (VaBroom® logo facing up)



Press the "Bombs Away" eject lever on the topside of the VaBroom® to open the back hatch and release debris into trash can.

BRISTLES VaBroom's® heavy duty bristles are extra firm for quality sweeping and to retain shape. The bristles are 'flagged' which means they are pre-frayed in the factory for "bushy" ends to better sweep up fine dust particles.

To preserve bristle quality, store VaBroom® by hanging up by the handle loop and not resting the bristles on the floor for long durations of time.