

PL4 FINGERPRINT LOCK



Fingerprint



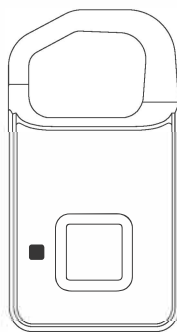
Stand-by
Time 6 Months



0.5s Unlock



Security



I .USB Interface:

The product is charged by USB. Please fully charge the product at the first time.

II .Indicator

The indicator has 3 colors. Different color represents different status of the Fingerprint Padlock.

Please check the details as below chart:

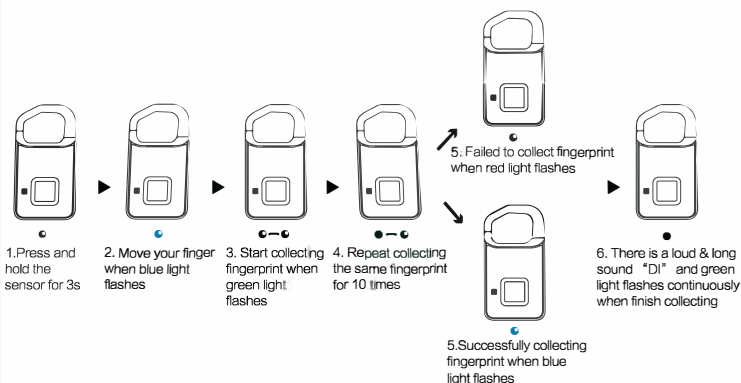
Indicator Light	Fingerprint Padlock Status
Red light flashes	Low power
Red light on	Recharging
Light off	Completely Charged
Green light flashes	Collecting fingerprints
Green light on	Finish collecting fingerprints
Blue light on	Admin fingerprint authorization
Green light flashes quickly	Unlock successfully
Red light on	Delete fingerprint
Red light flashes	Fail to collect fingerprint



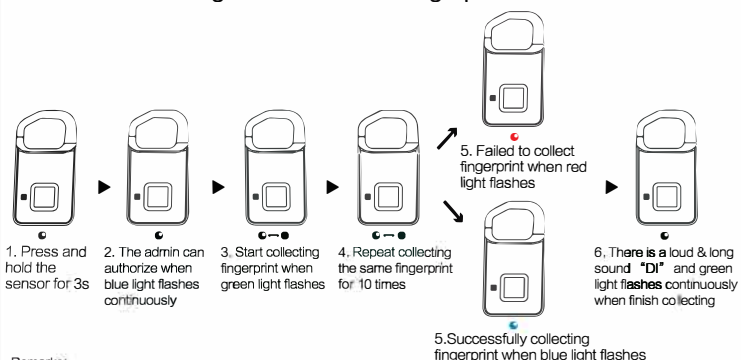
Components:

- 1.USB Port
- 2.Fingerprint Sensor
- 3.LED Light
- 4.Shackle

III .How to Collect The First Administrator' s Fingerprint



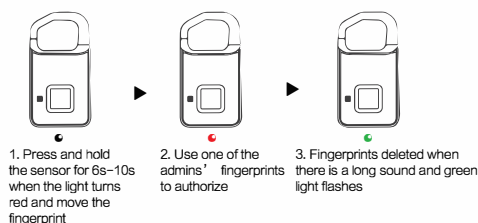
IV .How to Collecting The 2nd to 10th Fingerprints



Remarks:

1. The first and second fingerprints are the admins by default
2. One of the admins fingerprint will be need to authorize when adding fingerprints

V .How to Delete Fingerprints



Remarks:

Only the administrator can delete the fingerprint and delete all the fingerprints at one time

VI .Specifications

Support 360 degree angel fingerprint recognize
Resolution: 508DPI
ESD: +/-12kV air, +/-8kV contact
FRR: <1%
FAR: <0.002%
Recognize time: <300ms
Battery: 3.7V 80mAh
Charger: 5V 200MA

VII .Low voltage

When the voltage $\leq 3.5V$, the red indicator flash fast for 15s. If keep in the status of low batter, it will alarming per minute.