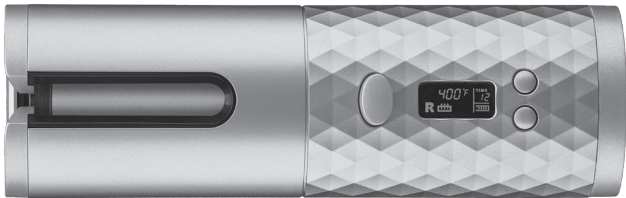


Unbound™

BEAUTY IN MOTION

Instruction and Styling Guide
Model CR510



BROUGHT TO YOU BY CONAIR®

IMPORTANT SAFETY INSTRUCTIONS

When using electrical appliances, especially when children are present, basic safety precautions should always be taken, including the following:

READ ALL INSTRUCTIONS BEFORE USING
KEEP AWAY FROM WATER

DANGER - Any appliance is electrically live even when the switch is off. To reduce the risk of death by electric shock:

1. **Always unplug appliance immediately after using.**
2. Do not use while bathing or in the shower.

3. Do not place or store appliance where it can fall or be pulled into a tub or sink.
4. Do not place in, or drop into, water or other liquids.
5. If an appliance falls into water, unplug it immediately. **Do not reach into the water.**

WARNING - To reduce the risk of burns, electrocution, fire, or injury to persons:

1. **This appliance should never be left unattended when plugged in.**
2. **Do not pull, twist, or wrap line cord around appliance.**
3. This appliance should not be used by, on or near children or individuals with certain disabilities.
4. Use this appliance only for its intended use, as described in this manual. Do not use attachments not recommended by the manufacturer.
5. **Never operate this appliance if it has a damaged cord or plug, if it is not working properly or if it has been dropped or damaged, or dropped into water. Return the appliance to an authorized service center for examination and repair.**

6. Keep the cord away from heated surfaces.
7. Never use while sleeping.
8. Never drop or insert any object into any opening or hose.
9. Do not use outdoors or operate where aerosol (spray) products are being used or where oxygen is being administered.
10. Unit is hot when in use. Do not let heated surface touch eyes or skin.
11. **Do not place the heated unit directly on any surface while it is hot or plugged in.**
12. Never block the air openings of the appliance or place on a soft surface such as a bed or couch, where the air openings may be blocked. Keep the air openings free of lint and other debris.
13. Do not use an extension cord with this appliance.
14. Do not touch hot surfaces of the appliance. Use handles or knobs.

15. Do not attempt to touch the housing of your appliance near the curl chamber, as it is hot when in use.
16. If not using the charger provided, use a charger that can provide rated charging voltage and current for charging.
17. If using another charging cable, please use one that can be charged with a charging current of 2A or more.
18. When the product is charging, do not leave it unattended. Be sure to remove the charger when it is full.
19. Do not pull the charging cable directly.
20. When the product is in use, the display temperature symbol display area flashes “E”, indicating that the temperature sensing probe is invalid. The product should be sent to the manufacturer’s maintenance department or a qualified professional maintenance organization for repair.

21. This product is for household use only.
22. This product is not a toy. Keep away from children.
23. Caution: Risk of fire and burns. Do not open, crush, heat above 60°C or incinerate.

SAVE THESE INSTRUCTIONS

OPERATING INSTRUCTIONS

Charging volt/current: DC 5V/2A(MAX)

18650 battery cell volt: 3.7V

Battery capacity: 5200mAh (2600mAh-2p)

1. Plug the USB cable into the USB port on a computer or into an adapter.
2. Charge the unit continuously for 4.5 hours before your first use. After initial charge and full discharge, it should take another 4.5 hours to fully recharge your curler.

3. The unit may become a little warm when charging or during use. This is normal.
4. Preserving the batteries: In order to maintain the optimum capacity of the rechargeable batteries, the curler should be recharged for 5 hours approximately every 3 months.

USER MANUAL

Before using the supplied USB charging cord, read these instructions carefully.

Rating required when connecting the USB port to a computer adapter:

Rated input voltage: 100-240V AC, 50/60Hz 0.2A

Rated output: 5V DC 2A

OPERATION

1. For dry location use only. Do not expose to water.
2. Unit will become warm during operation.
3. Unplug USB charging cord when not in use.

CAUTION

1. Dry location use only. Do not expose to liquids, vapor, or rain.
2. If using a USB power adapter, be sure the micro USB input is plugged into the unit before plugging the USB charging cord into the adapter and outlet.
3. Do not operate any appliance that has a damaged output cord or housing.
4. Always unplug the unit before cleaning or when not in use.

OPERATING PRECAUTIONS

This curler has a built-in rechargeable battery. Do not burn, apply heat, charge, or use or leave in a high-temperature environment.

TROUBLESHOOTING

If your rechargeable curler does not seem to be taking a charge, follow these steps before returning it for repair:

1. If using a USB power adapter in an electrical outlet, check to see if the outlet is working by plugging in another appliance to test it.
2. Make sure the environment is not too cold or too hot.
3. Make sure unit is completely cool before charging.

CURLER CHARGING PRECAUTIONS

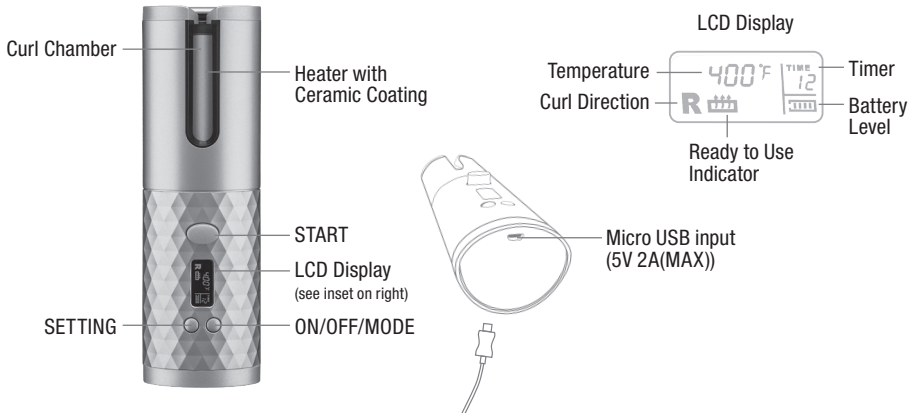
- Avoid charging the batteries at temperatures below 41°F (5° C) or above 104°F (40° C).
- Avoid charging the batteries in direct sunlight or near a radiating heat source.
- Even though the curler may not be used for an extended period of time, charge once a month to preserve battery life.

GETTING TO KNOW YOUR AUTO CURLER

Effortlessly create long-lasting beautiful curls with Unbound™ Auto Curler. Hair is automatically drawn into the ceramic curl chamber where it is gently held and heated from all directions to effortlessly form the curl. Then, simply release, and repeat. The result is beautiful, free-flowing curls.

Features:

- DC motor for precision styling and longer life
- Auto beep indicator
- Safety tangle feature
- 60-second heat-up
- Auto off
- Micro USB for charging
- LCD display



GETTING STARTED

- Before using, fully charge the product for maximum battery performance, and always be sure to read all the instructions.
- Press and hold ON/OFF/MODE button for 2 seconds to turn curler on. You will hear a “beep” and the LCD display will turn on.

Note: Press and hold the ON/OFF/MODE button for 2 seconds to turn curler off. If you forget to turn it off, it will shut itself off automatically after 15 minutes if not used.

- Press ON/OFF/MODE button to choose Temperature, Direction and Timer; press SETTING button to scroll through options.

Temperature: 320°F, 360°F, 400°F.

Direction: Left or Right or MIX

Timer(seconds): 6s, 8s, 10s, 12s

- Once options are selected, press START to begin heat-up.

Note: Heating symbol will blink when it is heating and will stop blinking and 2 “beeps” will sound when it reaches your temperature setting.

The styler's three high-heat temperature settings and Instant Heat technology provide styling versatility for all hair types. If you have fine hair, the lower temperature will produce the best results. If you have thick, wavy or hard-to-curl hair, keep the heat setting on high. Create a variety of curls with different combinations of heat, time, and curl direction!

CHOOSE YOUR CURL TYPE

CURL TYPE	TEMP	TIMER
LOOSE CURLS	320°F	6 or 8
MEDIUM CURLS	360°F	8 or 10
TIGHT CURLS	400°F	10 or 12



Loose Curls



Medium Curls



Tight Curls

THE CERAMIC EASY-GLIDE AUTO STYLER

The Unbound™ Auto Curler has a ceramic easy-glide coated surface. This is the newest technology. It not only makes it simpler to clean off styling product residue, etc. after each use, but you'll find that hair glides easily over the coated surface of the curl chamber. The ceramic-coated surface also helps smooth down flyaways and frizzies for added shine.

The curler evenly distributes heat so that the style you create has a salon-perfect, silky smooth, shiny finish. And hair slips right out of the curl chamber after it's curled.

Ceramic technology makes styling hair easier, and gives you professional results.

Never leave your styler on and unattended. However, should you fail to turn the styler off, it will shut itself off automatically within approximately 15 minutes.



TO CURL HAIR

- Comb through to remove any tangles and divide hair into sections, no more than ½-inch wide.
- With the opening of the curl chamber facing up, lay the section of hair across the opening. Make sure the hair falls inside the curl chamber. Press and hold the START button to activate the motor and draw hair into curling chamber.
- Continue holding the START button until you hear a “beep” letting you know automatic curling is finished.
- **NOTE:** final “beep” matches your Timer setting. i.e. There will be eight beeps if your setting is 8.
- To release hair, simply pull the auto curler down and away to gently release the curl.

STYLE TIP

- For curls that curl away from your face, select the “R” curl direction. Use “R” for styling the left side of your head. Use the “L” for the right side of your head.
- For a more natural look, select MIX curl direction to alternate curls.

TIPS

Before using, fully charge the product to get the best performance.

Before preparing to store your curler for a long time, fully charge it. Always be sure to charge it at least once every three months to keep the auto curler in the best condition.

- When the product is in the charging mode, the LCD display shows the battery indicator light, which will flash.
- When the product is fully charged and the charger is still connected, the battery indicator light remains solid.

Note: LCD display will be off after removing the charger if the product is off.

- When the product is charging, other functions are disabled.
- If hair becomes blocked in the curling chamber, you will hear a continuous “beep” while the auto curler returns to its starting position (or stops). Please release the START button to remove hair from the curler.
- When the battery is lower than the factory setting, the LCD display will flash three times and the unit will automatically shut off.

ADDED FEATURES

The curler comes with added safety and energy savings:

Auto Shut-Off: If the appliance is switched to ON for more than 15 minutes, it will automatically switch off. If you wish to continue using the appliance, press ON/OFF/MODE button for 2 seconds.

NOTE: Curl chamber will be hot to the touch.

FEDERAL COMMUNICATIONS COMMISSION NOTICE

WARNING: Changes or modifications to this unit not expressly approved by the party responsible for compliance could void the user's authority to operate the equipment.

This device complies with Part 15 of the FCC Rules. Operation is subject to the following two conditions: (1) This device may not cause harmful interference, and (2) This device must accept any interference received, including interference that may cause undesired operation.

NOTE: This equipment has been tested and found to comply with the limits for a Class B digital device, pursuant to Part 15 of the FCC Rules. These limits are designed to provide reasonable protection against harmful interference in a residential installation. This equipment generates, uses and can radiate radio frequency energy and, if not installed and used in accordance with the instructions, may cause harmful interference to radio communications. However, there is no guarantee that interference will not occur in a particular installation. If this equipment does cause harmful interference to radio or television reception, which can be determined by turning the equipment off and on, the user is encouraged to try

to correct the interference by one or more of the following measures:

- Reorient or relocate the receiving antenna.
- Increase the separation between the equipment and receiver.
- Connect the equipment into an outlet on a circuit different from that to which the receiver is connected.
- Consult the dealer or an experienced radio/TV technician for help.

SUPPLIER'S DECLARATION OF CONFORMITY

Brand: Conair

Model No.: CR510

Description: Unbound™ Auto Curler

Responsible Party: Conair Corporation,
1 Cummings Point Road,
Stamford, CT 06902 (203) 351-9000

Standards: FCC Part 15 Subpart B,
ANSI C63.4-2014

This device complies with Part 15 of the FCC Rules. Operation is subject to the following two conditions:

(1) This device may not cause harmful interference, and (2) This device must accept any interference received, including interference that may cause undesirable operation.

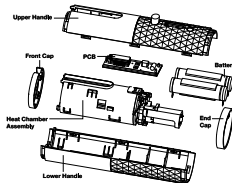
DATE OF ISSUE: 08/01/19

DISPOSAL OF LITHIUM ION BATTERIES

This unit has lithium ion batteries. To protect the environment, these batteries should be removed and properly disposed of when the unit is no longer operating. To remove the battery block for disposal or recovery, follow these instructions:

1. First unplug the unit
2. Open the unit and remove the batteries using wire cutters
3. To protect the environment, do not dispose of your batteries with your ordinary household waste.

For more details on recovery of materials and waste treatment facilities, please contact the waste disposal services in your region.



CONTAINS LITHIUM ION BATTERY. MUST BE COLLECTED, RECYCLED OR DISPOSED OF PROPERLY. DO NOT DISPOSE OF IN THE MUNICIPAL WASTE.

USER MAINTENANCE

Your styler is virtually maintenance free. No lubrication is needed. Keep all vents and openings clear of dirt and dust. If cleaning becomes necessary, disconnect the unit from the power source, allow to cool and wipe exterior with a cloth. If any abnormal condition occurs, unplug the unit, allow it to cool, and return it for repair to an authorized service representative only. No repairs should be attempted by the consumer.

CAUTION

NEVER allow the USB charging cord to be pulled, twisted, or severely bent. Never wrap the cord tightly around the appliance. Damage will occur at the high flex point of entry into the appliance, causing it to rupture and short circuit. Inspect the cord frequently for damage. Stop use immediately if damage is visible or if unit stops or operates intermittently.

STORAGE

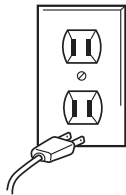
When not in use, your appliance is easy to store. Allow appliance to cool, then simply store out of reach of children in a safe, dry location. Do not jerk or strain cord at plug connections. Do not wrap the line cord around the appliance. Allow the cord to hang or lie loose and straight at the point of entry into the appliance.

CLEANING AND MAINTENANCE

- Do not put this product in a dishwasher or washing machine for cleaning.
- This product does not have waterproof function. When cleaning, care should be taken to prevent water or other liquid from entering the product from the product gap or interface, resulting in short-circuit of the product.
- Please clean up the foreign matter such as hair and dander remaining in the curl chamber after each use.
- Please carry out cleaning, maintenance and care while ensuring that the product has cooled down.
- Do not use sharp or corrosive, volatile thinner cleaners.
- Use a soft, damp cloth (a small amount of non-irritating, volatile, flammable detergent) to clean and wipe the product. When finished, dry with a soft, dry cloth.

**WARNING:
IF YOU THINK
THE POWER IS OFF
WHEN THE SWITCH
IS OFF,
YOU'RE WRONG.**

KEEP AWAY FROM WATER



Everyone knows that electricity and water are a dangerous combination. But did you know that an electric appliance is still electrically live even if the switch is off? If the plug is in, the power is on. So when you are not using your appliances, keep them unplugged.

ALWAYS UNPLUG SMALL APPLIANCES

LIMITED TWO YEAR WARRANTY

Conair will repair or replace (at our option) your unit free of charge for 24 months from the date of purchase if the appliance is defective in workmanship or materials.

To obtain service under this warranty, return the defective product to the service center listed on back, together with your purchase receipt and \$7.50 for postage and handling. California residents need only provide proof of purchase and should call 1-800-3-CONAIR for shipping instructions. In the absence of a purchase receipt, the warranty period shall be 24 months from the date of manufacture.

ANY IMPLIED WARRANTIES, OBLIGATIONS, OR LIABILITIES, INCLUDING BUT NOT LIMITED TO THE IMPLIED WARRANTY OF MERCHANTABILITY AND FITNESS FOR A PARTICULAR PURPOSE, SHALL BE LIMITED IN DURATION TO THE 24-MONTH DURATION OF THIS WRITTEN, LIMITED WARRANTY.

Some states do not allow limitations on how long an implied warranty lasts, so the above limitations may not apply to you.

IN NO EVENT SHALL CONAIR BE LIABLE FOR ANY SPECIAL, INCIDENTAL, OR CONSEQUENTIAL DAMAGES FOR BREACH OF THIS OR ANY OTHER WARRANTY, EXPRESS OR IMPLIED, WHATSOEVER. Some states do not allow the exclusion or limitation of special, incidental, or consequential damages, so the above limitation may not apply to you.

This warranty gives you specific legal rights, and you may also have other rights, which vary from state to state.

**Please register this product at:
www.conair.com/registration**

SERVICE CENTER

**Conair Corporation
Service Department
7475 N. Glen Harbor Blvd.
Glendale, AZ 85307**

©2019 CONAIR CORPORATION

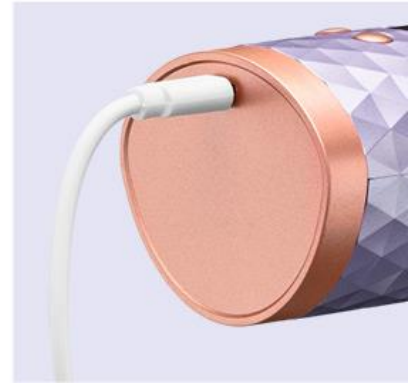
19PA064267

Patent Pending

**For info on any Conair product
call: 1-800-3-CONAIR or
visit us on the web at: www.conair.com**

IB-16535

Unbound® Cordless Auto Curler Troubleshooting Guide:



Battery Charging

My unit will not charge

Possible Cause: Electricity is not reaching the styler through the USB charging port.

Solution: If using a USB power adapter in an electric outlet, test the outlet with another appliance. If the outlet is working, try a different adapter. If charging from a USB source, try a different source. When the USB cable is plugged in, the battery light in the display should illuminate, indicating the battery is charging. If not, check to make sure it is properly plugged in at both the power source and the unit.

My unit will not hold a charge / keeps shutting off

Possible Cause: Battery may be defective.

Solution: Try charging overnight with a 2.5amp USB adapter plugged into an outlet. If the battery still doesn't charge, contact customer service.

Possible Cause: The styler may have reached the 15-minute Auto Shutoff point, designed for safety and to preserve battery life.

Solution: If the unit is switched on and is idle for more than 15 minutes, it will automatically shut off. This does not mean the battery is dead. If you want to continue using the styler, press and hold the ON/OFF/MODE button for 2 seconds to turn it on again.

The battery takes longer than 4.5 hours to charge

Possible Cause: Electricity source may not be full power.

Solution: It is recommended to charge the styler overnight before first use. Charge times will vary depending on type of adapter and power source being used. Charging with a laptop will take longer than using a USB plug adapter in an outlet. When the USB cable is plugged in, the battery

light in the display should illuminate, indicating the battery is charging. If not, check to make sure it is properly plugged in at both the power source and the unit.

My styler doesn't work. It won't heat up

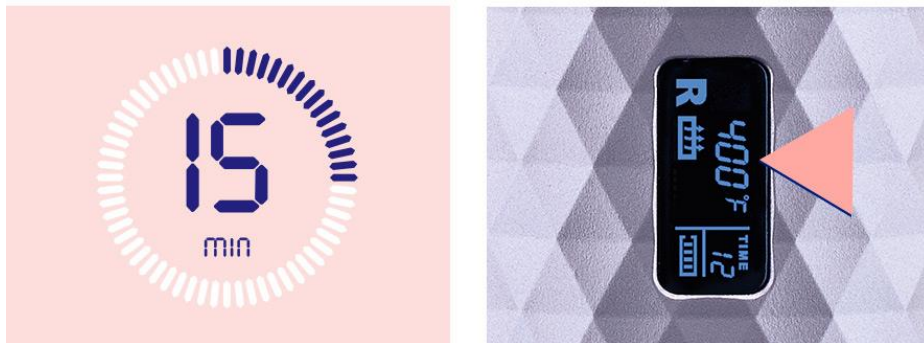
Possible Cause: The styler might not be fully charged.

Solution: Make sure the styler is fully charged overnight before you use it for the first time. After a full discharge, it should take another 4–5 hours to fully recharge. When the item is fully charged, the battery indicator icon will stop flashing and there should be 4 bars displayed.

My styler doesn't work when plugged in

Possible Cause: When the product is charging, other functions are turned off.

Solution: The Auto Curler is not cord/cordless, which means that it cannot be used while it is charging. The Auto Curler is designed so that it will not operate while it's charging. Once it is fully charged again, unplug it to resume cordless operation.



Battery Life

The battery does not last long enough to style my full head of hair / My styler shut off too soon while I was using it.

Possible Cause: The styler may have reached the 15-minute Auto Shutoff point, designed for safety and to preserve battery life.

Solution: If the unit is switched on and idle for more than 15 minutes, it will automatically shut off. This does not mean the battery is dead. If you want to continue using the styler, press and hold the ON/OFF/MODE button for 2 seconds to turn it on again.

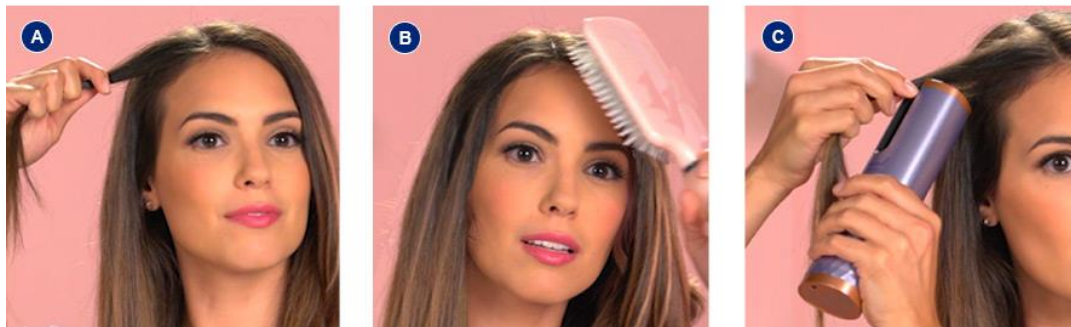
Possible Cause: Very thick or very long hair.

Solution: The battery will last for up to an hour; however, in-use times will vary depending on temperature and heat settings selected, as well as hair type. Try using a lower temperature setting and/or a shorter timer setting.

The battery shuts off after 15 minutes

Possible Cause: The styler may have reached the 15-minute Auto Shutoff point, designed for safety and to preserve battery life.

Solution: If the unit is switched on and is idle for more than 15 minutes, it will automatically shut off. This does not mean the battery is dead. If you want to continue using the styler, press and hold the ON/OFF/MODE button for 2 seconds to turn it on again.



Hair Tangling

My hair got tangled in the unit

Possible Cause: The section of hair being inserted into the chamber is too thick/big.

Solution: Start with a 1/2" section of hair. For longer hair, take smaller sections. See figure A.

Possible Cause: Hair was not combed through/is not free of knots.

Solution: Ensure that hair is brushed or combed through first to ensure that it is free of knots. See figure B.

Possible Cause: START button was pushed before section of hair was inserted into chamber.

Solution: Ensure that hair is inserted into the chamber BEFORE the START button is pushed. See figure C.

CHARGE FULLY OVERNIGHT BEFORE FIRST USE.

Charge time may vary depending on type of adapter and power source being used. It's best to use a 2.4 amp adapter for the quickest charge time.



Once battery icon stops flashing and 4 bars are displayed, turn on the unit by pushing the ON/OFF button for 2 seconds.



Use the MODE and SETTING buttons to select temperature, curl direction and timer settings.



Once the heat icon stops flashing and you hear a beep, the unit is ready to use.



Start with a 1/2" section of hair and insert into curl chamber. For longer hair, take smaller sections.



Press and continuously hold the START button to begin curling. The button should be held for the duration of the timer setting.



Release the START button when you hear 2 rapid beeps. Pull the auto-curler down to reveal the perfect curl.