

SHIATSU MASSAGE SEAT CUSHION

Item No. 207017

User Guide



Thank you for purchasing the Shiatsu Massage Seat Cushion. For best results, and for your own safety, please read these instructions prior to using this device for the first time. In addition, please store this guide for future reference.

FEATURES

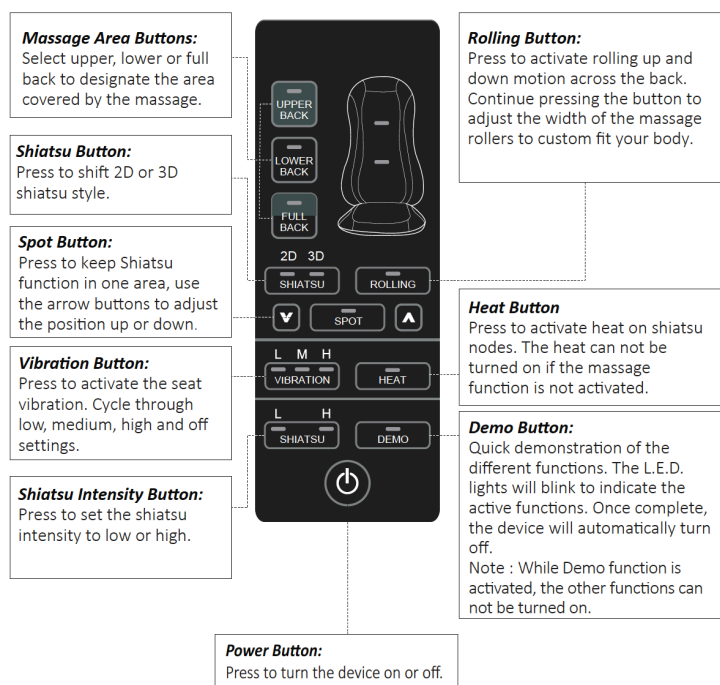
- Deep-kneading shiatsu and rolling massage
- Back rest massager
- Vibrating seat (High, Medium, Low)
- 2 massage heads
- Spot shiatsu massage
- 2D & 3D Shiatsu massage modes
- Remote control with storage pouch
- Soothing heat therapy
- Back straps
- 15-minute auto timer
- Gel massage nodes provide a softer massage
- Three massage variations (full back, lower back or upper back massage)
- Includes power adapter

SETTING UP YOUR DEVICE

The massage cushion can be used in almost any chair. Slip the straps over the seat or chair and adjust the fastening straps to secure the massager to prevent slippage.

POWERING YOUR DEVICE

- Plug one end of the included power adapter into an AC power source and the other end into the adapter jack attached to the massager
- The wall outlet for the power supply must be close and accessible. **NOTE:** Only use the power adapter included with this product. Do not use other adapters, as it may damage the device.



CLEANING AND MAINTENANCE

- Disconnect the device and allow it to cool down completely. Clean it with a dry, soft cloth or slightly damp sponge. Never allow water or any other liquid to enter the device or its accessories. Never use abrasive cleaners, brushes, etc.
- Do not wrap the power cord around the unit before storing. Store the massage cushion in a safe and dry place and out of children's reach. Avoid contact with sharp edges or pointed objects, as this might damage the fabric

WARNING

- This product is not a toy! Do not let children play with it
- This product is for personal use only and is not intended for medical or commercial purposes
- The unit is not waterproof; do not expose it to rain or moisture
- Do not leave the unit unattended when plugged in. Unplug it immediately after use
- Make sure that the device is not close to heat sources or left in direct sunlight
- Do not use your massager on areas with swelling, burns, inflammation, open wounds, fresh wounds, hematomas, bleeding or other injuries to the back
- Do not operate if you are pregnant
- Do not use in bed or while sleeping
- Do not use after taking medication or consuming alcohol, or other circumstances which reduces levels of awareness
- Do not operate this product when the cord or plug is damaged
- Do not use the product if it is not working properly, dropped or damaged
- The device is only intended for the purpose described in this user guide

WARRANTY/CUSTOMER SERVICE

This item from SharperImage.com includes a 1-year limited replacement warranty. If you have any questions not covered in this guide, please call our Customer Service department at 1 (877) 210-3449. Customer Service agents are available Monday through Friday, 9:00 a.m. to 6:00 p.m. ET.