

SAVE THESE INSTRUCTIONS WARNING –

- 1. Women whose skin is sensitive to cosmetics or easily irritated by shaving, or who suffer from a skin allergy, should test one section of the leg or arm before using the shaver head.
- 2. Do not use this appliance with damaged or broken foil and blade, as injury may occur.
- 3. When cleaning, use cold or warm water. Do not use hot water, sea water, or cleaners, as they can cause damage to the waterproof seals.
- 4. Use in or out of the shower, but do not leave the entire unit submerged in water.
- 5. This appliance is not a toy. Keep away from children.

TROUBLESHOOTING

- There are several things to look for if your unit fails to operate:
- 1. Be sure the power handle is turned ON.
 - 2. Make sure that the battery is properly placed in the battery compartment. Test the battery to be sure they are working.
 - 3. Check the blades to see if they are clogged with hair clippings; if so, use the cleaning brush to remove hair.
 - 4. If the unit still fails to operate, take or send it to a Conair Service Center (see warranty procedure and addresses).

OPERATING INSTRUCTIONS FOR YOUR ALL-IN-ONE FACIAL TRIM SYSTEM FOR HOUSEHOLD USE ONLY

OPERATING INSTRUCTIONS BATTERY INSTALLATION:

- 1. Twist bottom housing of unit to the left and align triangles “▼” and “▲” and pull (see FIG. 1).
- 2. Insert 1 AA battery (not included).
- 3. Slide bottom housing back in place and align “O” and “▲”.
- 4. Ensure the battery is installed correctly with regard to polarity (+ and -).
- 5. Remove the battery if it is no longer functional or if the trimmer is left unused for an extended period of time.
- 6. Clean the battery contacts and also those of the device prior to battery installation.
- 7. Remove used battery promptly.
- 8. Always purchase the correct size and grade of battery most suitable for its intended use.

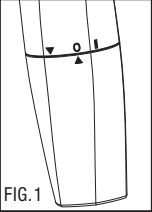


FIG. 1

GETTING STARTED TO SWITCH TRIMMER HEADS

- 1. Make sure the unit is turned off.
- 2. Turn head to the right, aligning triangles “▼” and “▲” (see FIG. 2).
- 3. Switch the attachment head and put new head on then turn to the left and align “▼” with “O” (see FIG. 3).

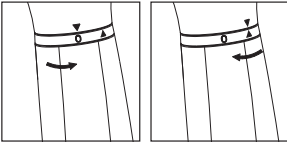


FIG. 2

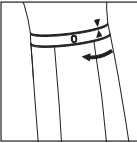


FIG. 3

INSTRUCTIONS FOR USE

- 1. Twist the battery cover to the left to unlock battery cover.
- 2. Insert 1 AA battery according to the polarity marking, return the battery cover, turn to the right and align with “O” and “▲” marks to lock, and then twist to right again, the unit will start to work and align “I” and “▲” marks.
- 3. After use, turn off the power making the “▲” of the battery cover align with “O” mark (see FIG 1).

BEFORE USE:

- 1. Test one small section of the leg or arm before using any of the attachments on the rest of the body.
- 2. If any sensitivity or allergic reactions occur discontinue use immediately.
- 3. Do not use on sensitive or irritated skin.

USING THE ROTARY SHAVER

Never use a foil that is damaged, as this can result in injury. This appliance is suitable for dry and wet shaving!

SHAVING

- 1. Attach the shaver head
- 2. Twist the battery cover to the right and align “I” and “▲” marks to start the unit.
- 3. Hold the shaving foil against the skin, moving the shaver slowly and smoothly in circular motions against the grain of your natural hair growth.
- 4. Don’t push too hard against the skin as this will cause irritation and may damage the foil.
- 5. As your skin may be sensitive after shaving, test your moisturizer on a small patch of skin and wait to see if irritation occurs.
- 6. Cleaning: After each use, you will need to clean the shaver head to ensure continued performance.
- 7. Twist the battery cover to the left and align “O” and “▲” marks to turn the unit off.

NOTE: If you are switching to an electric or battery-operated shaver for the first time, it will take 12 uses for your skin and hair to adjust to this new method of removing hair. Do not evaluate performance until you have allowed your skin and hair time to adjust.

HOW TO CLEAN YOUR SHAVER HEAD

This is a water-resistant appliance. The appliance may be cleaned under warm or cold water.

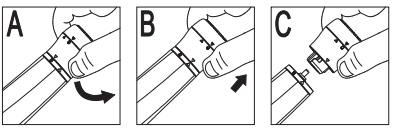
NOTE: When cleaning your unit, make sure the unit is turned off.

CAUTION!

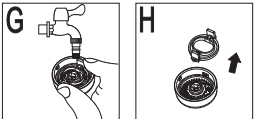
- To clean the external surfaces of the appliance, use a damp cloth. Do not use strong detergents or other chemicals.
- To dry, wipe the surface of the appliance with a dry towel. Do not use a hair dryer or heater to dry the appliance.

CLEANING AFTER EVERY USE:

- 1. To take the shaver head off, twist the top of the head from “O” to the right and align the arrows to remove (See FIG. A-C)



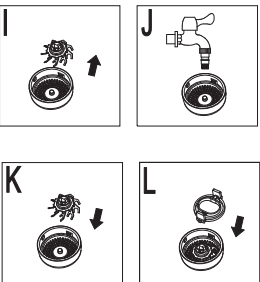
- 2. To take the shaver cover off, twist the top cover of the head from “O” to the left and align the arrows to remove (see FIG. D-E).



- 3. Rinse the shaver cutter and foil frame under running water or in a sink. Do not use hot water. Use only warm or cold water (see FIG F-G).
- 4. After wet cleaning, allow the foil frame and cutters to air-dry before closing foil frame and shaver head. Replace shaver head back onto the main unit until it clicks into place. Wipe the surface of the main unit with a dry towel.

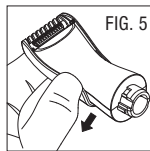
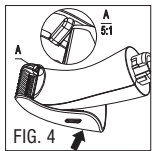
DEEPLY CLEANING EVERY MONTH:

- 1. Perform the cleaning steps FIG. A to FIG. E.
- 2. Remove the inner cutter lock away from the cutters (see FIG. H).
- 3. Remove the cutters (see FIG. I).
- 4. Thoroughly rinse away any debris from inner and outer cutters (see FIG. J).
- 5. Replace the inner cutters by matching the inner cutters to the corresponding outer cutter hub (see FIG. K).
- 6. Place inner cutter lock back into position by sliding it back into the support until it snaps into place (see FIG. L).
- 7. Snap shaver head assembly back onto main unit.



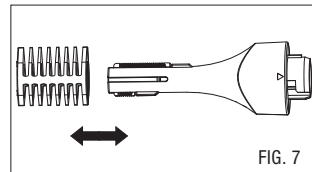
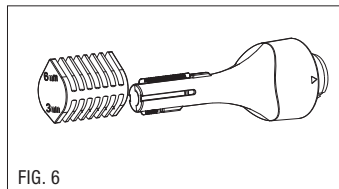
USING THE BIKINI TRIMMER

1. Start with the guide comb attached for first time use.
2. Turn the unit on.
3. To fully remove hair or to outline the bikini area, use the trimmer without the attachment comb.
4. When removing hair, gently move the blades against the direction of growth.
5. To outline, place the blades perpendicular to the skin surface and apply the blades to the edge of the hair. Use the blades to create the desired outline.
6. For the cleanest finish, follow up with the foil shaver.
7. For cutting hair without completely removing it, attach the detail comb to the head. Place the comb on the cutting blades first, align the comb ribs with top surface of trimmer head housing and then snap down onto the back of the trimming head (see FIG. 4).
8. Snap off the comb guide to release from the trimmer head (see FIG. 5).



USING THE EYEBROW TRIMMER

1. This trimmer comes with two trimming blades. The larger blade can be used to trim body hair and eyebrows. The smaller blade is ideal for detailing. It also comes with a comb attachment that helps you achieve an even cut when you do not want to completely remove the hair. The comb attachment has two sides: The long tooth is for body hair, and the short tooth is for eyebrow trimming.
2. Aligning the indicator with the 6mm mark on the comb leaves hair longer, while aligning with the 3mm mark leaves hair shorter (see FIG. 6).
3. To use the comb attachment, be sure the unit is in the OFF position and slide the comb over the trimming blades (see FIG. 7). Make sure that the teeth of the comb are facing in the same direction as the trimming blade, and that the top of the comb is even with the top of the trimmer. If you want to completely remove hair, use the trimmer without the comb attachment.
4. To operate the trimmer, turn the battery cover to right making the arrow toward the "I" mark. When you are finished trimming, turn the battery cover to left making the arrow towards "O" mark, the unit is turn off.
5. To store the trimmer, slide the comb attachment cover over the trimming blades.



TAKING CARE OF YOUR TRIMMER

BLADE CARE

Because the trimmer blades are precision made for a very special use, they should always be handled with care. Each time you finish using the trimmer, take the cleaning brush provided and brush away any loose hair that has collected in the blades, then rinse blades under water only, allow to air-dry and store the trimmer until the next use.

To promote the long life of the appliance, use your trimmer only for the purpose intended by the manufacturer.

CAUTION

1. When shaking off excess water, hold the main unit firmly to prevent releasing the head assembly or dropping the unit.
2. Do not use a dryer or heater to dry the trimmer. This may result in malfunction or damage to the trimmer.

LIMITED TWO-YEAR WARRANTY (U.S. AND CANADA ONLY)

Conair will repair or replace (at our option) your unit free of charge for 24 months from the date of purchase if the appliance is defective in workmanship or materials.

To obtain service under this warranty, return the defective product to the service center listed on back, together with your purchase receipt and \$5.00 for postage and handling. California residents need only provide proof of purchase and should call 1-800-3-CONAIR for shipping instructions. In the absence of a purchase receipt, the warranty period shall be 24 months from the date of manufacture.

ANY IMPLIED WARRANTIES, OBLIGATIONS, OR LIABILITIES, INCLUDING BUT NOT LIMITED TO THE IMPLIED WARRANTY OF MERCHANTABILITY AND FITNESS FOR A PARTICULAR PURPOSE SHALL BE LIMITED IN DURATION TO THE 24-MONTH DURATION OF THIS WRITTEN, LIMITED WARRANTY.

Some states do not allow limitations on how long an implied warranty lasts, so the above limitations may not apply to you.

IN NO EVENT SHALL CONAIR BE LIABLE FOR ANY SPECIAL, INCIDENTAL, OR CONSEQUENTIAL DAMAGES FOR BREACH OF THIS OR ANY OTHER WARRANTY, EXPRESS OR IMPLIED, WHATSOEVER.

Some states do not allow the exclusion or limitation of special, incidental, or consequential damages, so the above limitation may not apply to you.

This warranty gives you specific legal rights, and you may also have other rights, which vary from state to state.

Please register this product at www.conair.com/registration

©2018 Conair Corporation
Service Center
Conair Corporation
Service Department
7475 North Glen Harbor Blvd.
Glendale, AZ 85307

18PG050897

IB-15526

SATINY SMOOTH[®]

all-in-one facial trim system



For your safety and continued enjoyment of this product, always read the instruction book carefully before using.

CONAIR[®]

MODEL LT85