

# **S H A R P E R I M A G E<sup>®</sup>**

## **SAND-BLASTED GLASS ULTRASONIC AROMATHERAPY DIFFUSER**

Item No. 206366

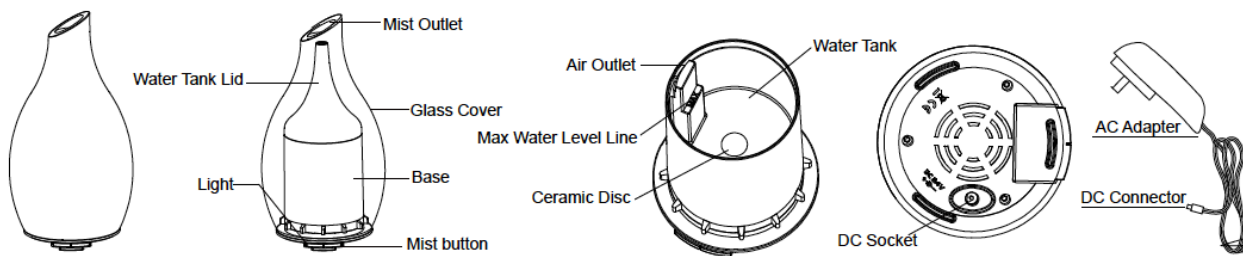
User Guide



### **INTRODUCTION**

Thank you for purchasing the Sharper Image Sand-Blasted Glass Ultrasonic Aromatherapy Diffuser. Please take a moment to read this guide and store it for future reference.

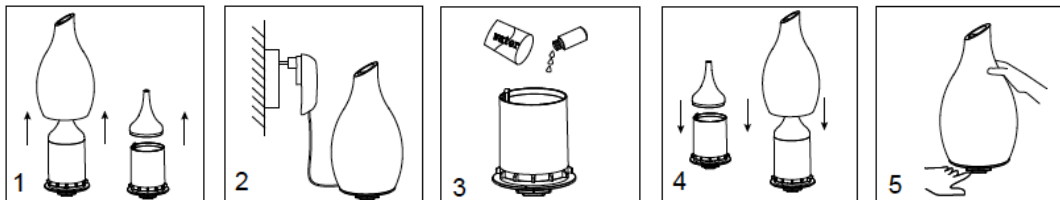
## IDENTIFICATION OF PARTS



## FEATURES

- Ultrasonic vibrations transform water and essential oil into a steady stream of aroma-infused mist
- Water Capacity: 120 mL [4.06 fl. oz]
- Coverage Area: Up to 40 sq. m. [430 sq. ft]
- Continuous Run Time: Up to about 5 hours
- Intermittent Run Time: Up to about 10 hours **Note:** Run time will vary depending on humidity levels and other external factors.
- Light Mode: Bright white light, soft white light and OFF.
- Automatic safety shut-off
- Power: Certified AC Adapter included

## INSTRUCTIONS



1. Remove glass cover. Remove water tank lid from the base.
2. Insert the adapter's DC connector into the DC socket located on the bottom of the base. Plug the AC end of the adapter into an electrical wall outlet.
3. Pour tap water into the water tank up to the max water level line. Add 2-5 drops of essential oil [not included] directly into the water tank.
4. Replace the water tank lid. Replace glass cover on top of base, aligning mist outlet with nozzle on water tank lid.
5. Button Functions:  
Right Side – Mist:
  - Press once to turn on Continuous mist.
  - Press twice to turn on Intermittent mist at 30-sec intervals.
  - Press three times to turn mist off.

Left Side – Light:

Mode:

- Press once to turn on bright white light.
  - Press twice to turn on soft white light
  - Press three times to turn light off.
6. The unit will stop misting when water level becomes too low. Note that the light must be manually turned off.
  7. Disconnect adapter from electrical outlet when not in use.

## CARE AND MAINTENANCE

**Note:**

- Only use the power cord supplied with the unit. Always remove the power cord before cleaning.
- Essential oil should not come in contact with the exterior surface of the unit.

## HOW TO CLEAN

1. Remove outer cover. Empty the water from the water tank away from the air outlet.
2. The ceramic disc should not come in contact with any hard or sharp objects.
3. To remove possible buildup, gently use a cotton swab dipped in white vinegar to wipe out the inside.
4. Dry with a soft cloth to avoid mineral buildup.
5. Do not use strong cleaning agents.

## WARRANTY/CUSTOMER SERVICE

Sharper Image branded items purchased from SharperImage.com include a 1-year limited replacement warranty. If you have any questions not covered in this guide, please call our Customer Service department at 1 (877) 210-3449. Customer Service agents are available Monday through Friday, 9:00 a.m. to 6:00 p.m. ET.

**SHARPER IMAGE®**

The SHARPER IMAGE® name and logo are registered trademarks.

©Sharper Image. All Rights Reserved.