

SHARPER IMAGE®

3-D ULTRASONIC AROMATHERAPY DIFFUSER

Item No. 206148

User Guide



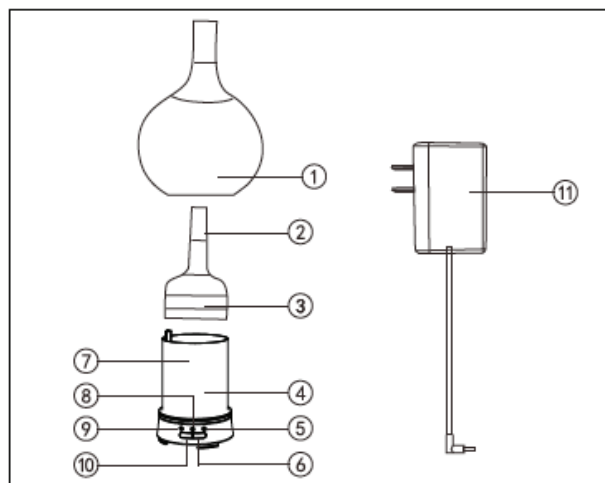
Thank you for purchasing the Sharper Image 3-D Ultrasonic Aromatherapy Diffuser. Please take a moment to read this guide and store it for future reference.

INTRODUCTION

The 3-D Ultrasonic Aromatherapy Diffuser uses ultrasonic sound waves to transform water and essential oil into a superfine scented mist, without the use of heat or flames. This scented mist creates a pleasant atmosphere in the home or office, and can help you to relax, unwind and ease away stress.

IDENTIFICATION OF PARTS

1. Glass cover
2. Water tank cover spout
3. Water tank cover
4. Water tank
5. 1-hour timer light
6. LED button
7. Water tank capacity label
8. 2-hour timer light
9. Power indicator light
10. Power button
11. AC adapter



BUTTON FUNCTIONS

Power button: Select continuous mist or one of two automatic shutoff timers

- Press 1 time = continuous mist + color-changing LED light mode
- Press a second time = 2-hour shutoff timer + color-changing LED light mode
- Press a third time = 1-hour shutoff timer + color-changing LED light mode
- Press a fourth time = mist is turned off and LED light is turned off

LED Button: Select color-changing light mode [the default setting] or a solid color.

Note: Each solid color has a "high" and "low" setting.

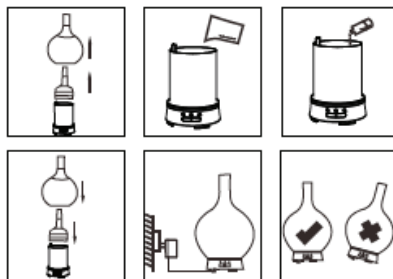
The sequence is as follows:

Color-changing mode [default] > Purple [high] > Purple [low] > Yellow [high] > Yellow [low] > Blue [high] > Blue [low] > Green [high] > Green [low] > Cyan [high] > Cyan [low] > White [high] > White [low] > back to Color-changing mode

Press and hold the LED button for 3 seconds to turn off the light. The diffuser will continue to produce mist without light.

OPERATING THE 3-D ULTRASONIC AROMATHERAPY DIFFUSER

1. Remove the glass cover and water tank.
2. Put water into the water tank [maximum 3 oz./100ml].
Do not use any other liquid.
3. Add 3-5 drops of essential oil to the water
[essential oil not included].
4. Replace the water tank cover and the glass cover.
5. Plug in the device and press the Power button to operate.
6. When device is in use or filled with water, make sure it is
on a flat, level surface.



CARE AND MAINTENANCE

1. Before cleaning or maintenance, make sure the device is turned off and unplugged.
2. Remove the glass cover and water tank.
3. Pour out water, making sure that you do not get water into the motor or air outlet.
If water does get into the air outlet or motor, place the device in a ventilated area and let
it dry out for at least 3 days.
4. Use a clean swab or soft cloth to gently clean the device.

TROUBLESHOOTING

Problem	Reason	Solution
No Mist	Not connected to power source.	Connect to power source and press the power button.
	No water or water below the minimum level.	Put appropriate water into the water tank.
	Overfilled with water [over 3 oz./100 ml].	Pour out excess water, making sure that you do not get water into the motor or air outlet.
	Atomization plate is covered by scale.	Clean the scale in the atomization plate.
	Top cover or water cover mist vent is clogged.	Use a swab to clean mist vent and keep the mist vent clean.

SHOPPING FOR ESSENTIAL OIL?

Sharper Image offers a variety of top quality essential oils for your aromatherapy diffuser.
Visit SharperImage.com to choose Cinnamon, Lavender, Eucalyptus and more [Item No. 201106].

SPECIFICATIONS

Product Model No	206148
Product Size	3.7 x 10.2 in.
Voltage	DC24V
Power	10W
Water Capacity	100ML

WARRANTY / CUSTOMER SERVICE

Sharper Image branded items purchased from SharperImage.com include a 1-year limited replacement warranty. If you have any questions not covered in this guide, please call our Customer Service department at 1 (877) 210-3449. Customer Service agents are available Monday through Friday, 9:00 a.m. to 6:00 p.m. ET.

SHARPER IMAGE®

The SHARPER IMAGE® name and logo are registered trademarks.

©Sharper Image. All Rights Reserved.